

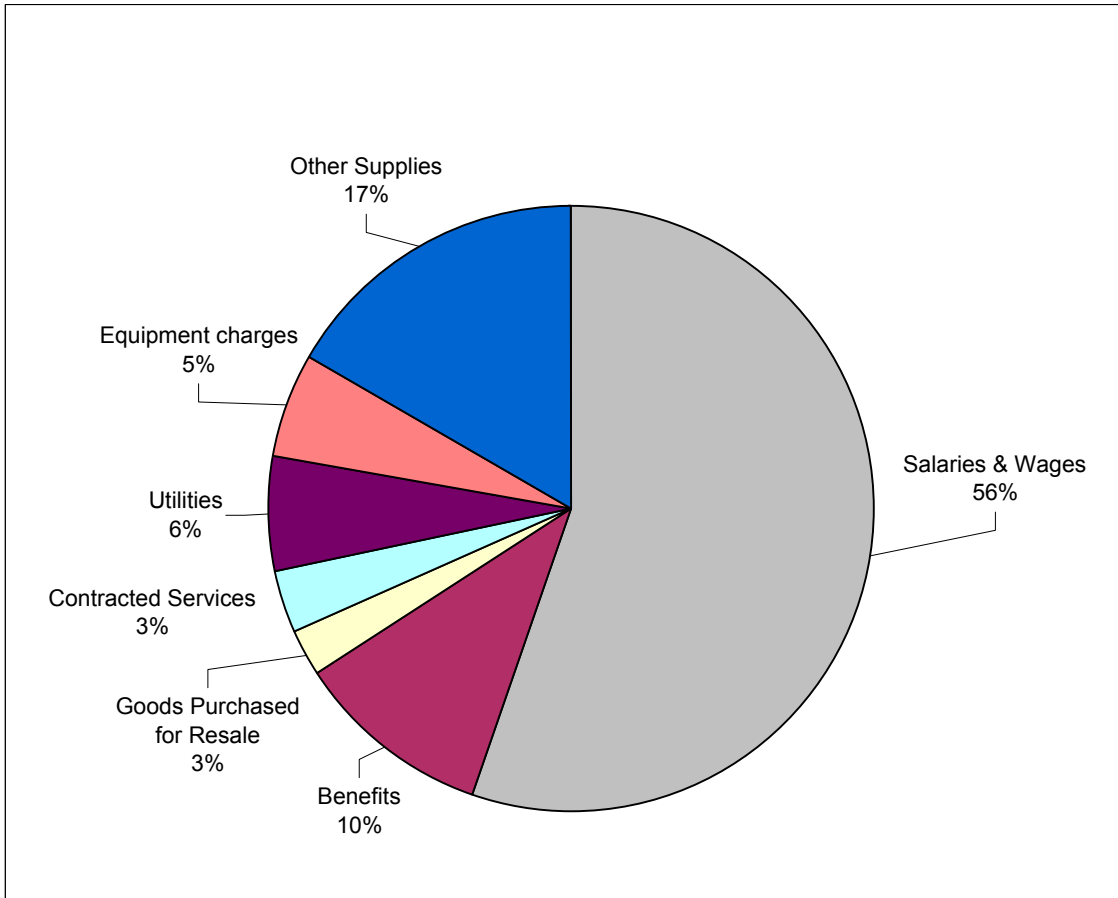
Vancouver Board of Parks and Recreation
Operating Statement for Cycle 12, the period ending Dec 31, 2003 (unaudited)

365/365 days = 100%

	Annual Budget	Actual & Committed	Adjustments	Adjusted Actual & Committed	Percent Of Budget	Remaining Annual Budget	2002 Budget	2002 Actual	Percent Of Budget
Stanley District									
Revenues	(\$10,362,500)	(\$11,103,131)	\$0	(\$11,103,131)	107.15%	\$740,631	(10,230,400)	(11,511,218)	112.5%
Expenditures	\$19,087,600	\$19,271,192	\$0	\$19,271,192	100.96%	(\$183,592)	18,767,700	19,192,769	102.3%
	\$8,725,100	\$8,168,060	\$0	\$8,168,060	93.62%	\$557,039	\$8,537,300	\$7,681,551	90.0%
Queen Elizabeth District									
Revenues	(\$8,311,100)	(\$8,547,003)	\$0	(\$8,547,003)	102.84%	\$235,903	(8,253,800)	(8,491,734)	102.9%
Expenditures	\$19,548,750	\$19,984,340	\$0	\$19,984,340	102.23%	(\$435,590)	19,430,200	19,221,289	98.9%
	\$11,237,650	\$11,437,337	\$0	\$11,437,337	101.78%	(\$199,687)	\$11,176,400	\$10,729,555	96.0%
Vancouver East District									
Revenues	(\$12,099,500)	(\$11,560,851)	\$0	(\$11,560,851)	95.55%	(\$538,649)	(11,901,400)	(11,432,166)	96.1%
Expenditures	\$21,699,600	\$22,036,297	\$0	\$22,036,297	101.55%	(\$336,697)	21,409,300	21,289,709	99.4%
	\$9,600,100	\$10,475,446	\$0	\$10,475,446	109.12%	(\$875,346)	\$9,507,900	\$9,857,542	103.7%
Planning & Operations									
Revenues	(\$384,400)	(\$336,532)	\$0	(\$336,532)	87.55%	(\$47,868)	(375,700)	(229,223)	61.0%
Expenditures	\$16,181,069	\$16,286,029	\$0	\$16,286,029	100.65%	(\$104,960)	15,174,209	15,302,972	100.8%
	\$15,796,669	\$15,949,496	\$0	\$15,949,496	100.97%	(\$152,827)	\$14,798,509	\$15,073,749	101.9%
Corporate Services									
Revenues	(\$6,500)	(\$8,553)	\$0	(\$8,553)	131.58%	\$2,053	142,900	(28,159)	-19.7%
Expenditures	\$4,460,550	\$4,052,018	\$0	\$4,052,018	90.84%	\$408,532	3,431,200	3,356,511	97.8%
	\$4,454,050	\$4,043,465	\$0	\$4,043,465	90.78%	\$410,585	\$3,574,100	\$3,328,352	93.1%
Park Board Totals									
Revenues	(\$31,164,000)	(\$31,556,071)	\$0	(\$31,556,071)	101.26%	\$392,071	(30,618,400)	(31,692,501)	103.5%
Expenditures	\$80,977,569	\$81,629,875	\$0	\$81,629,875	100.81%	(\$652,306)	78,212,609	78,363,251	100.2%
Net	\$49,813,569	\$50,073,805	\$0	\$50,073,805	100.52%	(\$260,236)	47,594,209	46,670,749	98.1%

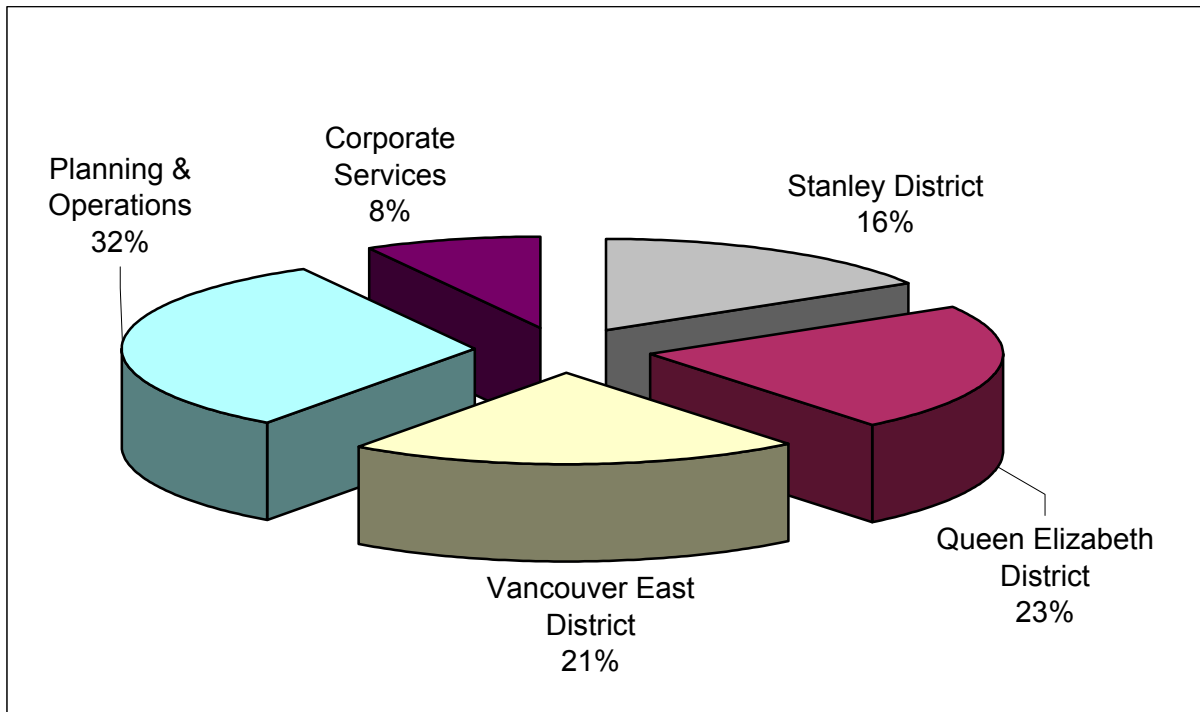
Appendix 2
Board of Parks and Recreation
2003 Actual Gross Expenditures (Unaudited)

<u>Expenditures</u>	<u>2003 Budget</u>	<u>2003 Actual \$</u>	<u>2003 %</u>
Salaries & Wages	\$45,530,571	\$45,231,118	55.4%
Benefits	8,587,700	8,553,200	10.5%
Subtotal:	54,118,271	53,784,318	65.9%
Goods Purchased for Resale	1,973,500	2,059,752	2.5%
Contracted Services	2,478,050	2,572,498	3.2%
Utilities	4,880,150	5,155,760	6.3%
Equipment charges	4,316,900	4,344,685	5.3%
Other Supplies	13,210,698	13,712,863	16.8%
Subtotal:	26,859,298	27,845,557	34.1%
Gross Expenditures	\$80,977,569	\$81,629,875	100.0%



Appendix 3
Board of Parks and Recreation
2003 Actual Net Expenditures (Unaudited)

<u>Allocation</u>	<u>2003 Budget \$</u>	<u>2003 Actual \$</u>	<u>2003 Actual %</u>
Stanley District	\$8,725,100	\$8,168,060	16.31%
Queen Elizabeth District	11,237,650	11,437,337	22.84%
Vancouver East District	9,600,100	10,475,446	20.92%
Planning & Operations	15,796,669	15,949,496	31.85%
Corporate Services	4,454,050	4,043,465	8.08%
Park Board Totals	\$49,813,569	\$50,073,805	100.00%



**Appendix 4
Board of Parks and Recreation
2003 Actual Gross Revenues (Unaudited)**

<u>Revenue Source</u>	<u>2003 Budget \$</u>	<u>2003 Actual \$</u>	<u>2003 %</u>
Golf Courses (including Pitch & Putt)	\$10,458,500	\$9,845,987	12.1%
Parking	2,822,600	2,884,477	3.5%
Concessions	2,715,600	2,801,204	3.4%
Marinas	1,933,200	1,951,931	2.4%
Recreation: Pools, Rinks & Other	8,676,800	9,338,243	11.4%
Vandusen & Bloedel	1,857,300	1,671,218	2.0%
Other Revenues	2,700,000	3,058,179	3.7%
Subtotal:	31,164,000	31,551,239	38.7%
City of Vancouver Funding	49,813,569	50,078,637	61.3%
Total	\$80,977,569	\$81,629,875	100.0%

