

Legend

- 1 existing jumbo brick
- 2 existing standing seam metal
- 3 jumbo brick rainscreen to match existing
- 4 standing seam metal to match existing
- 5 painted tilt-up concrete insulated sandwich panel with potential reveals max. 20 mm deep
- 6 double-glazed windows in anodized aluminum frames
- 7 open web steel truss approximately 2500 mm deep
- 8 potential daylighting to be investigated subject to building envelope and performance criteria; potential light diffusing product: Solera translucent insulated glass
- 9 portable seating on treated wood platform compartmentalized such that no sprinklers required
- 10 steel cross-bracing
- 11 steel and glass canopy with steel column support
- 12 bench
- 13 plastic bench
- 14 dasher board and glass system to accommodate reconfiguration from Olympic to NHL ice dimensions
- 15 acrylic dome skylight
- 16 double glazed partition in anodized aluminum frame
- 17 double glazed sliding door in anodized aluminum frame
- 18 painted concrete block
- 19 painted concrete block with bullnose units where appropriate
- 20 open web steel joists approx. 500 mm deep
- 21 toilet partition
- 22 metal grate
- 23 steel column
- 24 overhead door 4270 high
- 25 vending machines
- 26 scoreboard and clock
- 27 2 ply SBS insulated roofing system on acoustic steel decking on open web steel trusses
- 28 green roof system
- 29 suspended radiant heating to be relocated at legacy mode
- 30 concrete retaining wall
- 31 concrete sidewalk
- 32 illuminated sign
- 33 drywall partition
- 34 glulam beam approx. 175 mm x 456 mm deep
- 35 air handling unit: number and location as required, to be determined
- 36 temporary Olympic seating to be reconfigured for legacy mode
- 37 louvers metal grille for dehumidifier

ACTON OSTRY ARCHITECTS INC.

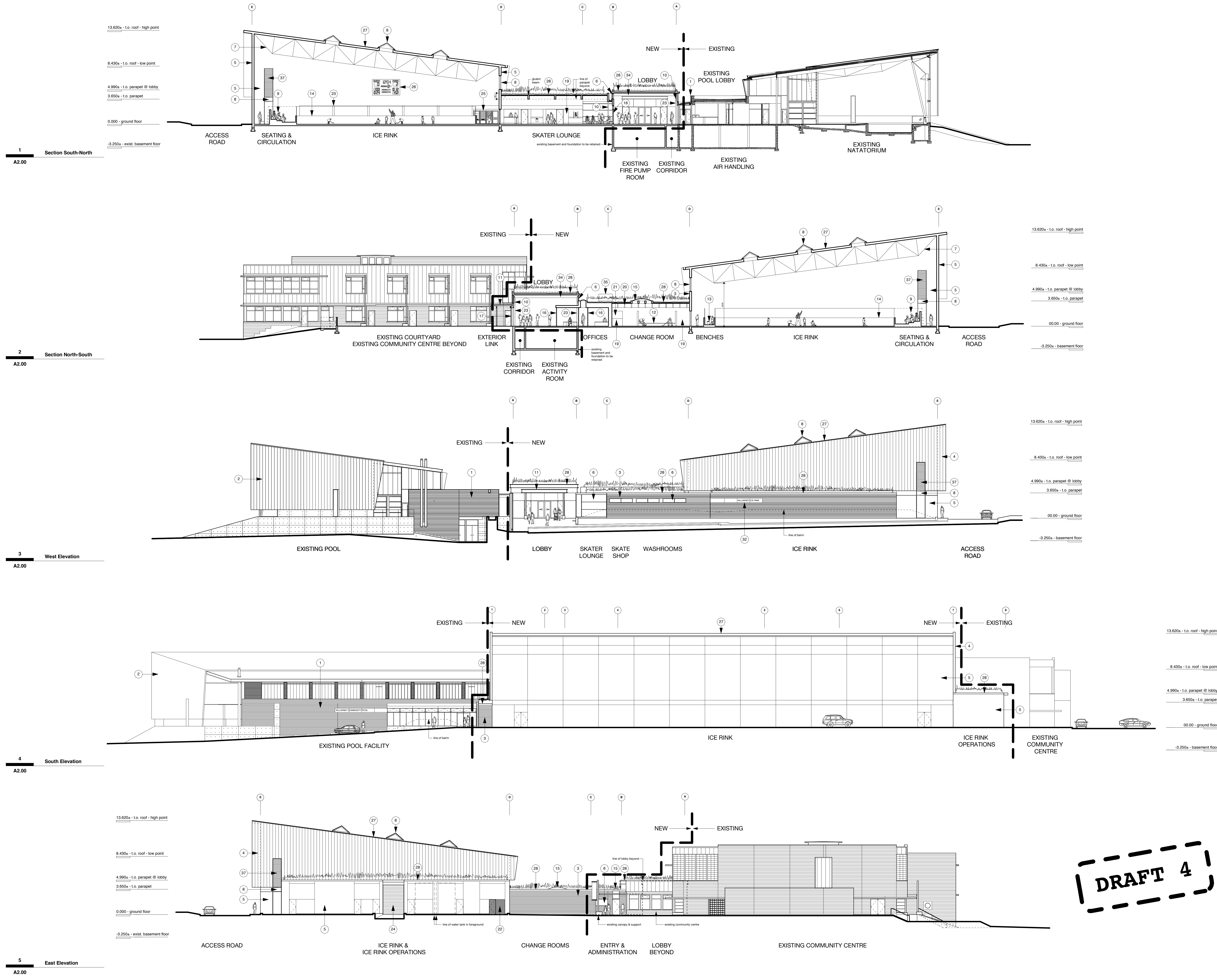
1637 W 5 Avenue
 Vancouver BC
 Canada V6I 1M5
 T 604.739.3344
 F 604.739.3355
 info@actonostry.ca

Killarney Ice Rink and Lobby
 6260 Killarney Street, Vancouver BC

scale	date
1:200	04 July 2006
project code	status
KIL	DP
drawn	checked
NS	RA

Section & Elevations

drawing number	revision
A2.00	#



DRAFT 4