



**Vancouver Board of Parks and Recreation**  
 Regular Board Meeting

**July 7, 2008**  
 Killarney Community Centre, 6260 Killarney Street

Visit the Park Board web site at [vancouverparks.ca](http://vancouverparks.ca)

**Yaletown Park Opening**



Vancouver Board of Parks and Recreation | [vancouverparks.ca](http://vancouverparks.ca)

**English Bay Bistro**

Recommendation

**THAT the Board approve the redevelopment of the existing English Bay (Denman Street) concession and request staff to seek a development permit.**

Vancouver Board of Parks and Recreation | [vancouverparks.ca](http://vancouverparks.ca)



**English Bay Bistro - Proposed view from Seawall**

Vancouver Board of Parks and Recreation | [vancouverparks.ca](http://vancouverparks.ca)

**English Bay Bistro**

Date	Feedback Forms Rec'd	Support	Oppose	Don't Know
Thu June 12, 2008	32	14 43.8%	12 37.5%	6 18.8%
Sat June 14, 2008	149	124 83.2%	22 14.8%	3 2.0%
<b>Subtotal</b>	<b>181</b>	<b>138 76.2%</b>	<b>34 18.8%</b>	<b>9 5.0%</b>
Website response/emails to June 18, 2008	14	5 35.7%	7 50.0%	2 14.3%
<b>TOTAL feedback received</b>	<b>195</b>	<b>143 73.3%</b>	<b>41 21.0%</b>	<b>11 5.6%</b>

Vancouver Board of Parks and Recreation | [vancouverparks.ca](http://vancouverparks.ca)

**English Bay Bistro**

Recommendation

**THAT the Board approve the redevelopment of the existing English Bay (Denman Street) concession and request staff to seek a development permit.**

Vancouver Board of Parks and Recreation | [vancouverparks.ca](http://vancouverparks.ca)

**Jericho Marginal Wharf: Concept Plan Approval**

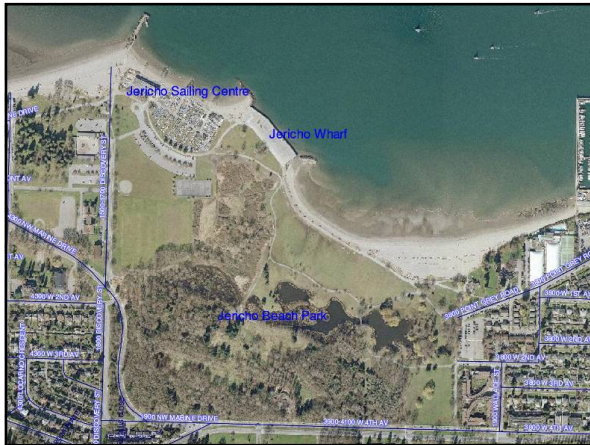
Recommendation

**THAT the Board approve the Concept Plan (1-C) for the Jericho Marginal Wharf as described in this report and illustrated in Appendix 1.**

Vancouver Board of Parks and Recreation | vancouverparks.ca

**Marginal Wharf At Jericho Beach**

JUNE 16, 2008



**•The Bartholomew Report, 1930**  
 The Report Called For:  
 A policy of contiguous park & public open space along all lands fronting English Bay. It also recommended purchasing all properties along Point Grey Road for park purposes.

**•Marginal Wharf Analysis Report, 1989**  
 J. Agl & Associates, Engineer  
 The Analysis Focused On:  
 The feasibility of, and remedial measures required for the Wharf's retention.

**•Jericho Park Improvement Plan, 1989**  
 Shaw & Demers Landscape Architecture & Planning  
 The Improvement Plan Called For:  
 Public washrooms at the west end of the park; improved access along the waterfront pathway; additional picnic tables as well as improved natural areas, namely a constructed fen and pond. It also recommended retaining the Wharf.

**•Marginal Wharf At Jericho Beach Condition Assessment Report, 2002**  
 Levittion Engineering  
 The Report Focused On:  
 A condition inspection and assessment of all timber structures at the Wharf, including decking, pile-caps and piles.

- The report concluded that the Wharf is at the end of its service life and requires demolition or significant repairs to ensure public safety.

**•Report For Jericho Beach Wharf, 2005**  
 Westmar Consultants Inc.  
 The Report Focused On:  
 A condition inspection, assessment and load rating of all Wharf timber components, including decking, pile-caps, corbels and piles. It also undertook an estimate of residual service life; and provided recommendations and cost estimates for demolition and rehabilitation options.

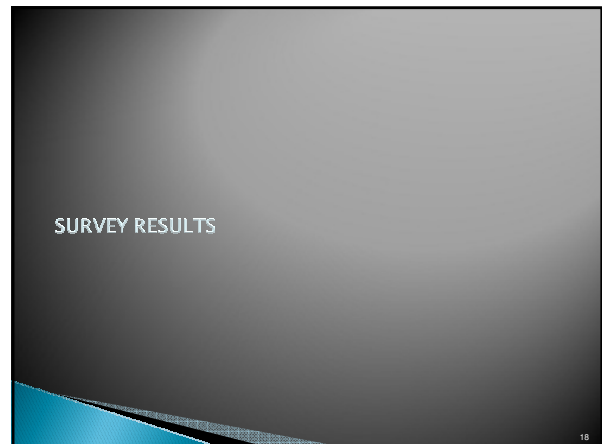
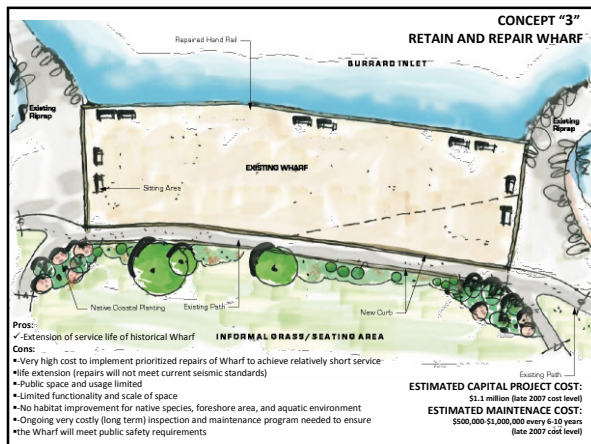
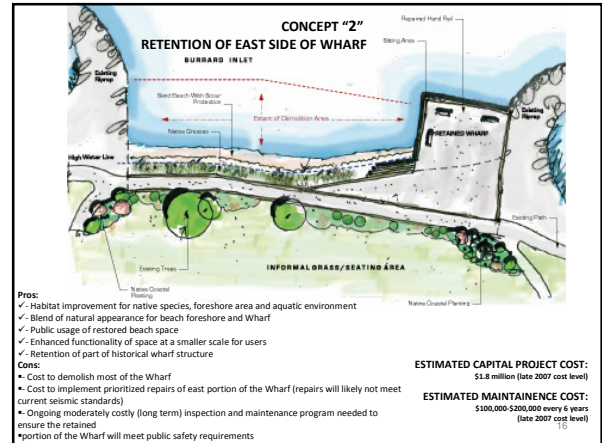
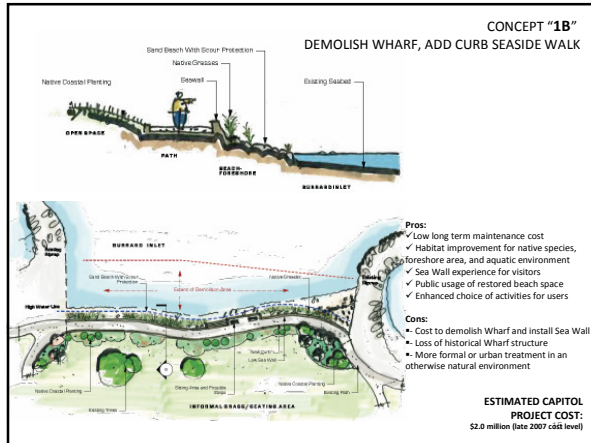
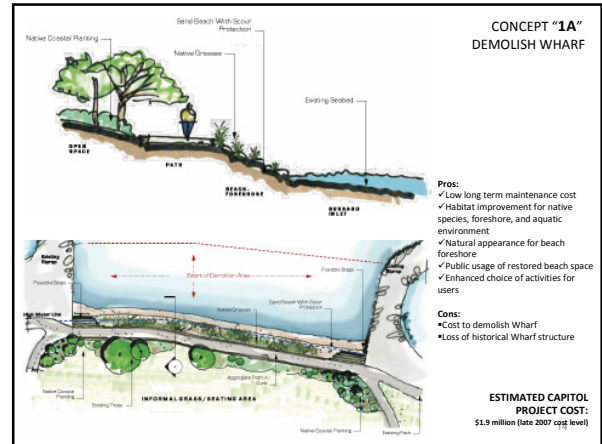
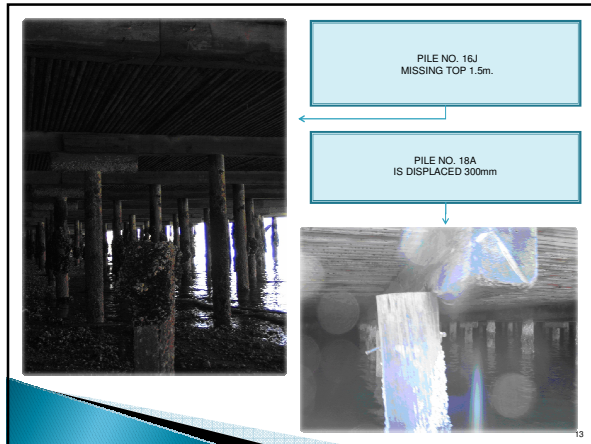
- The report concluded that the Wharf is at the end of its useful service life and requires demolition or significant repairs to ensure public safety. Of particular concern is the poor condition of many of the timber piles that are no longer serviceable.
- Seismic upgrading of the facility is not economically feasible due to the nature of the timber structure and the underlying geotechnical conditions.

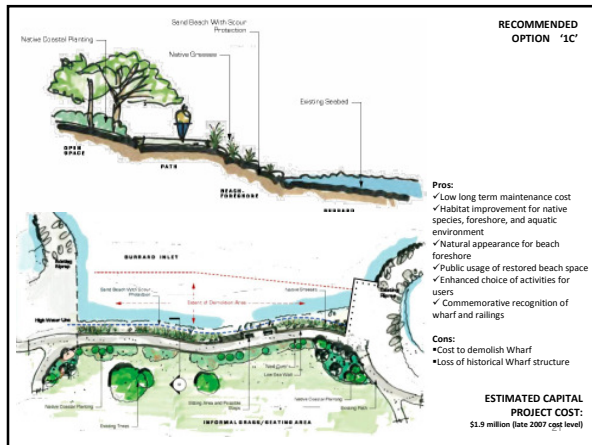
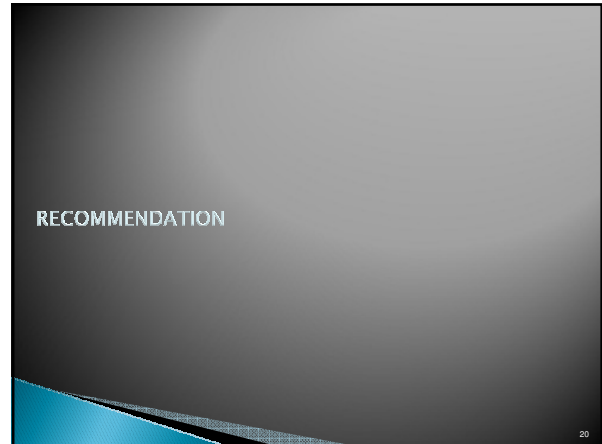
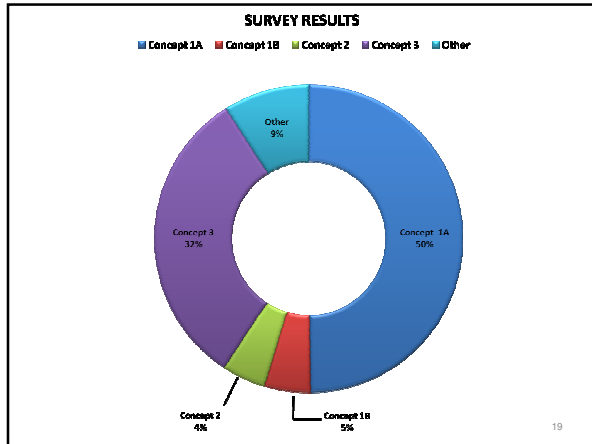
PILECAP NO. 19A  
 EXHIBITING CROSSSECTIONAL LOSS AT END DUE TO FUNGAL DECAY AND MARINE BORER DAMAGE

PILECAP NO. 21A  
 EXHIBITING DECAY AT END.

PILECAP NO. 29H  
 BULGING OVER MISALIGNED CORBEL.

PILE NO. 3F  
 EXHIBITING CROSSSECTIONAL LOSS DUE TO FUNGAL DECAY IN PILE TOP





**Jericho Marginal Wharf: Concept Plan Approval**

Recommendation

**THAT the Board approve the Concept Plan (1-C) for the Jericho Marginal Wharf as described in this report and illustrated in Appendix 1.**

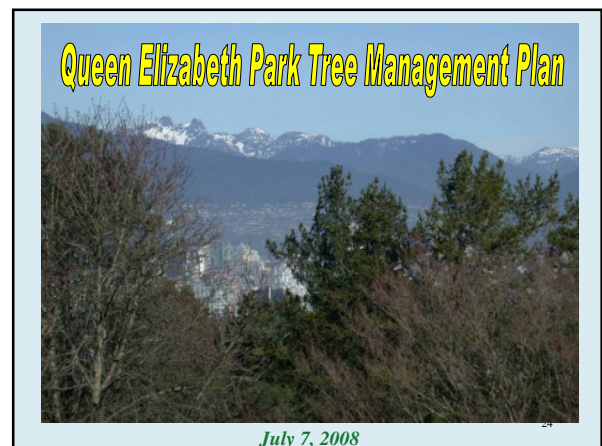
Vancouver Board of Parks and Recreation | vancouverparks.ca

**Queen Elizabeth Park Tree Management Plan**

Recommendation

**THAT the Board endorse the Queen Elizabeth Park Tree Management Plan**

Vancouver Board of Parks and Recreation | vancouverparks.ca



### Plan Objectives

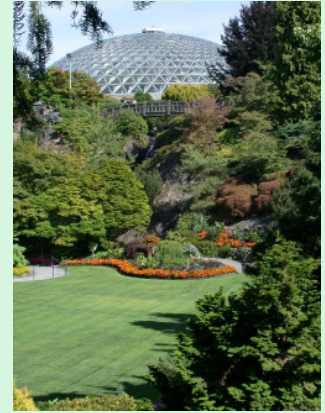
- Restore and Preserve principal view corridors by removing obstructing trees.
- Replace removed trees on a two-for-one basis, resulting in a net increase in future tree cover.
- Enhance areas where trees are removed through replanting with appropriate species to provide year-round beauty, wildlife value, and ease of maintenance.



25

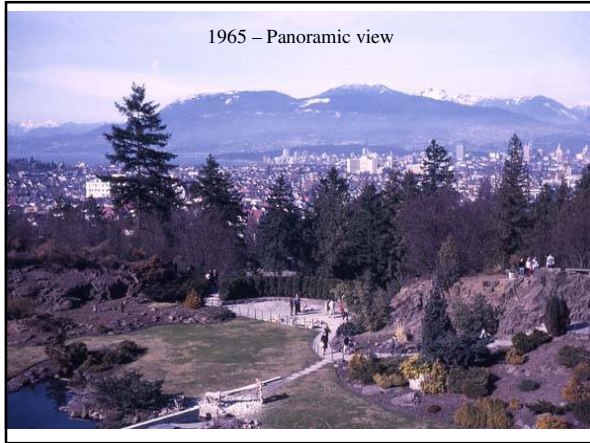
### Background

- QE Park is highest elevation within City of Vancouver at 501 ft (152m)
- Site clear-cut in late 1800's; Arboretum plantings begun in 1949.
- City designates five QE Park view corridors for protection in 1990.
- 1999 Talbot report identifies views vs. trees as an issue requiring resolution.
- Tower proposal defeated Jan 2008; Board asks staff to report on plan to restore views by managing trees.

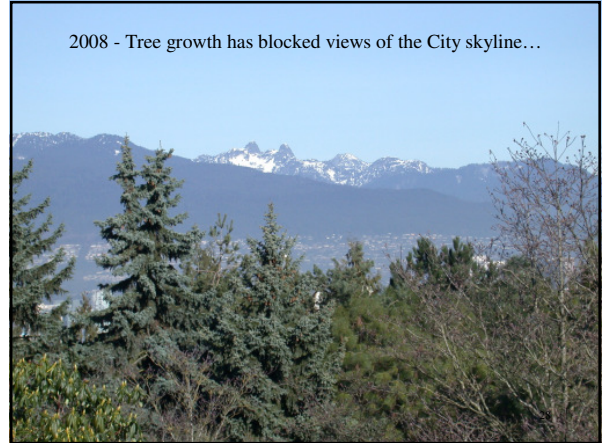


*Large Quarry Garden (built 1954) and Bloedel Conservatory (1969)*

1965 – Panoramic view



2008 - Tree growth has blocked views of the City skyline...



### View Cones



View cones - **1:** Large Quarry, **2:** Bloedel Lookout, **3:** Anniversary Garden <sup>29</sup>

### Large Quarry Lookout – March 2008





**Plan Description**

- Remove 70 trees blocking views from lookouts, prune lower branches of 8 more.
- Biologist will assess trees - trees with nests would be retained until after the nesting season.
- Replant two trees for each removed (140 new trees.)
- Replant lookout areas with ornamental trees and shrubs which attain a mature size that will not impinge on views.
- Plant additional trees in non view-sensitive areas of QE Park.

*Japanese Dogwood, a low growing tree*

**Plan Description**

*Needle blight on Jack Pine*

- All trees to be removed are species that are well-represented in local parks and gardens.
- Commemorative trees are outside view corridors and will be preserved.
- About a third of the trees to be removed are in poor health due to storm damage, needle blight, and overcrowding.

35

**Plan Description**

One third of trees to be removed are in less than optimal health due to:

Storm Damage

36

### Plan Description

One third of trees to be removed are in less than optimal health due to:



**Overcrowding**

37

### Plan Description

One third of trees to be removed are in less than optimal health due to:



**Disease**

38

### Public Consultation

Responses received to June 20, 2008:

Type of response	Support	%	Oppose	%	Don't know/ no opinion/ modified plan	%	Total Responses
Letters	12	29%	20	49%	9	22%	41
Phonecalls	3	21%	10	71%	1	7%	14
Feedback forms	27	54%	18	36%	5	10%	50
Online feedback forms	34	49%	33	47%	3	4%	70
<b>Totals:</b>	<b>76</b>	<b>43%</b>	<b>81</b>	<b>46%</b>	<b>18</b>	<b>10%</b>	<b>175</b>

Telephone Survey conducted June 2008:

Type of response	Support	%	Oppose	%	Don't know/ no opinion/ modified plan	%	Total Responses
Telephone Poll	299	82%	96	19%	145	29%	500

39

## Implementation Timeline

- Tree removal in late Summer 2008
- Tree replanting to be done over fall and winter 2008/09



### Creating New Forest Habitat

New trees will be planted in open areas of the Park to create additional wildlife habitat, using native west coast forest species.



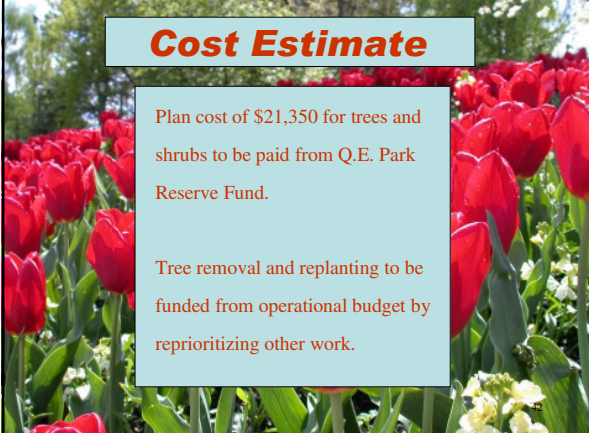

*Feb 2004 - Barren east slope of GVRD Little Mountain Reservoir reconstruction site*

*July 2008 - Native Douglas firs and western red cedars now 10' tall (planted fall 2005)<sup>41</sup>*

## Cost Estimate


Plan cost of \$21,350 for trees and shrubs to be paid from Q.E. Park Reserve Fund.

Tree removal and replanting to be funded from operational budget by reprioritizing other work.



**Key Points**

- Large trees in Arboretum area will not be touched.
- Lower growing trees below lookouts will be preserved – the area will not be clear-cut.



*Large conifers in Arboretum – WILL NOT BE REMOVED*



*The Q.E. Park Tree Management Plan would restore significant views while providing a future increase in tree cover and park biodiversity*

**Queen Elizabeth Park Tree Management Plan**

Recommendation

**THAT the Board endorse the Queen Elizabeth Park Tree Management Plan**

Vancouver Board of Parks and Recreation | vancouverparks.ca

**Stanley Park Repair Project**

Recommendation

A. THAT, subject to Recommendations B, C and D, the Board enter into a contract with Matcon Excavation and Shoring Ltd. in the amount of \$1,063,005.00 plus GST, for the Seawall Repair Project as detailed in this report;

B. THAT the contract be on the terms and conditions outlined in this report and on such other terms and conditions as are approved by the General Manager of the Park Board in consultation with the Director of Legal Services;

C. THAT, upon approval of the contract by the General Manager of the Park Board in consultation with the Director of Legal Services, the General Manager of the Park Board be authorized to execute the contract on behalf of the Board;

D. THAT no legal rights shall arise hereby, and none shall arise until execution of the contemplated contract, and the Board reserves the right to rescind this resolution at any time up to the execution and delivery of the contemplated contract by the General Manager of the Park Board.


Vancouver Board of Parks and Recreation | vancouverparks.ca

**Green House Gas Reduction Update**

Recommendation

**THAT the Board receive the attached Council report dated June 24, 2008 for information.**

Vancouver Board of Parks and Recreation | vancouverparks.ca



**GREEN HOUSE GAS REDUCTION**  
 Phase 2 update  
 July 7<sup>th</sup>, 2008

Park Board Main Office, 2099 Beach Avenue



### Background

- Park Board endorsed Council's Corporate Climate Change Action Plan (December 2003)
- Plan aims to reduce Green House Gas (GHG) emissions by 20% from 1990 levels by 2010.



Vancouver Board of Parks and Recreation | vancouverparks.ca

### Objectives

- Reduce GHG emissions by 20% for the buildings reviewed – from 8,600 to 6,400 tonnes GHG per year.
- Satisfy internal funding requirements in order to finance project from utility savings.



Vancouver Board of Parks and Recreation | vancouverparks.ca

### Highlights

- \$8.3m injected into Park Board with an internally financed loan over 20 years.
- Park Board is injecting \$310,000 in three projects:
  - Vancouver Aquatic Centre Boilers,
  - Kensington Community Centre Boilers
  - West End Community centre air conditioning – efficiency improvement.

Vancouver Board of Parks and Recreation | vancouverparks.ca

### Utility costs

- **Gas – large user rate – 19% rise**
  - March 2007 – \$7.34/GJ
  - June 2008 - \$8.71/GJ
- **Hydro – large user rate – 3.5% rise**
  - March 2007 – 7.12 ¢/kWh, 3.42 ¢/kWh
  - June 2008 – 7.36 ¢/3.54 ¢



Vancouver Board of Parks and Recreation | vancouverparks.ca

### Templeton Pool

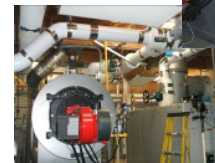
- Solar heat for pool
- Condensing boiler



Vancouver Board of Parks and Recreation | vancouverparks.ca

### Outdoor pools

- New Brighton
- Second Beach



Vancouver Board of Parks and Recreation | vancouverparks.ca

Vancouver Board of Parks and Recreation  
**Regular Board Meeting – July 7, 2008**  
**Killarney Community Centre, 6260 Killarney Street**



**green like me**

**Park Board takes a leap to a greener future!**

Green Like Me is a Vancouver Park Board program that works toward reducing greenhouse gas (GHG) emissions at its facilities. It's part of the City's Corporate Climate Change Action Plan to cut back on GHG 20% by 2010.

Reducing energy needs can be as simple as turning the lights off or using more energy efficient ways of heating, ventilating and air conditioning.

**What's happening at Park Board facilities?**

From now until the end of 2008, we'll be undertaking many improvements to reduce energy consumption.

- Upgrading boilers and heat exchangers to heat buildings and pools more efficiently.
- Improving the efficiency of lighting and installing daylight sensors.
- Pushing air conditioning systems and increasing our ability to control heating and ventilation based on building occupancy.

**Why are we doing this?**

- We will save money on electricity and gas bills.
- GHG emissions will be reduced by 1,200 tonnes per year, equivalent to driving a compact car nearly 10 million km.

For more information on what you can do in your own life to reduce energy use, visit [oneday...vancouver.ca](http://oneday...vancouver.ca)

**oneday... vancouver.ca**

**VANCOUVER PARKS & RECREATION**

Vancouver's Green Park Board facilities have been certified as Green Communities by GreenSource Canada. By reducing consumption in a variety of ways, we can help to reduce the greenhouse effect.

**Green House Gas Reduction Update**

Recommendation

**THAT the Board receive the attached Council report dated June 24, 2008 for information.**

Vancouver Board of Parks and Recreation | [vancouverparks.ca](http://vancouverparks.ca)



**Vancouver Board of Parks and Recreation**  
**Next Regular Board Meeting**

**July 21, 2008**  
**Park Board Main Office, 2099 Beach Avenue**

Visit the Park Board web site at [vancouverparks.ca](http://vancouverparks.ca)