

Mount Pleasant Centre at #1 Kingsway

Recommendation

- A. Receive the attached Council report for information.
- B. Support Option 1 as the interim solution for the childcare programs offered through the Mount Pleasant Community Centre Association.

Location Map



Background

- Replacement of the existing Community Centre approved in 2001
- Library, Child Development Centre and Market Rental Housing added
- Final approved budget \$50.4 million
- Construction began in Sept.2005

Vancouver Board of Parks and Recreation | vancouverparks.ca

Building Schematics



Vancouver Board of Parks and Recreation | vancouverparks.ca

Construction Progress



Vancouver Board of Parks and Recreation | vancouverparks.ca

Completion Timetable

- Building construction complete – Sept. 09
- Community Centre programs run at existing Mount Pleasant CC until September 09
- Relocation during September 09
- Opening of new Centre – Early October 09
- Mount Pleasant Pool to operate in Summer '09

Vancouver Board of Parks and Recreation | vancouverparks.ca

Mount Pleasant Centre Vision

To Play, To Learn, To Grow, To Connect, To Collaborate

Mount Pleasant Centre Mission

To deliver local services:

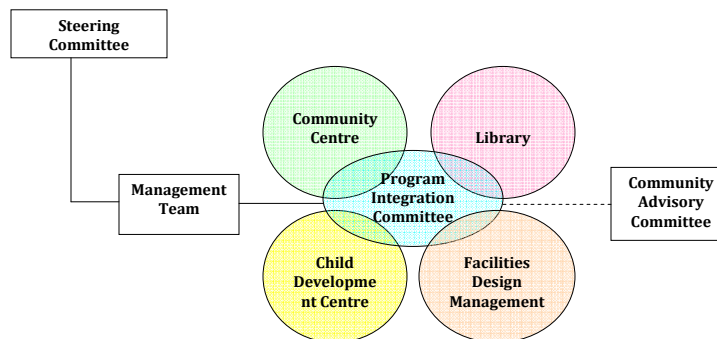
- Through the unique partnership and collaboration among City of Vancouver, Vancouver Park Board, Mount Pleasant Community Centre Association, Library Board and partner service providers
- To meet the community needs for recreation, library, childcare and healthy communities
- Directly and virtually in an environmentally sustainable manner

Mount Pleasant Centre Operating Principles

- Integrated Services
- Collaborative Programs
 - ❖ Leisure & Healthy Living
 - ❖ Knowledge and Information
 - ❖ Child and Youth Development
- Community Interaction
- Local Access Point to Civic and Community Services

Vancouver Board of Parks and Recreation | vancouverparks.ca

Mount Pleasant Centre Operating Model



Vancouver Board of Parks and Recreation | vancouverparks.ca

Operating Budget	
Community Centre	
▪ Existing Budget	\$550K
❖ Transfer to City of Vancouver –	
❖ Maintenance & Utilities	(\$190K)
▪ Proposed 2009 Budget Changes	
❖ Added Basic costs for:	
• Front Office Coverage	\$ 34K
• Transition costs (one time)	\$ 9K
▪ Net Budget	\$394K
Vancouver Board of Parks and Recreation vancouverparks.ca	

Interim Childcare Programming Issue	
▪ Approved modular facility on Simon Fraser School site	
❖ Tentative completion	Jan 2010
▪ Relocation of community centre to #1 Kingsway	
	Sept 2009
▪ Interim solution needed	
Vancouver Board of Parks and Recreation vancouverparks.ca	

Option 1

Before school care at Simon Fraser School
Kindercare, After school care at #1 Kingsway

Pros

- A portion of program remains at the school
- New facility offers great program spaces
- Minimal extra costs to the Association (approx \$1100 per month)
- Funds available can be focused on modular building
- Allows for process to redevelop the park to begin

Cons

- Transportation of children
- Families inconvenienced in the short term
- Level of participants in program may drop

Option 2

Continued Use of Existing Mount Pleasant Community Centre

Pros

- Programs remain local
- Convenience to families

Cons

- Association costs increase as Park Board funding and staff move to #1 Kingsway (approx. \$11,000 per month for utilities, staffing & maintenance)
- Portion of building unused, potential for vandalism, increased liability
- Competition for Association funding between interim site and modular building
- Fundraising difficult in current economy
- Extends timeframe to return portion of site back to parkland in a park deficient neighbourhood