



Vancouver Board of Parks and Recreation

“Home and Away” Public Art - Empire Fields

May 25, 2015

Visit the Park Board website at: vancouverparks.ca



Recommendation

THAT the Vancouver Park Board approve the installation of the sculpture “Home and Away”, which celebrates both historic and future activities at Empire Fields and which was commissioned by the Public Art Program and designed for Empire Fields/Plateau Park; with all arrangements to the satisfaction of the General Manager.



Background

- Opportunity identified in 2012 for a professional artist to be included in the design team for the Empire Fields/Plateau Park site.
- Artist team selected through City Public Art standard commissioning process (call and interview).
- Collaborative design process resulted in a unique and integrated site-specific art piece.
- Park Board assumes responsibility for Empire Fields/Plateau Park in 2014.
- Total costs of \$450,000 to be covered by the Public Art Program (includes minimum of 10% for maintenance reserve)



Background

“Home and Away” has been designed specifically for this site and references Empire Fields rich sport and recreation history.













The Artwork



Home and Away is a 'slice' of play architecture that references the old bleachers and score boards.

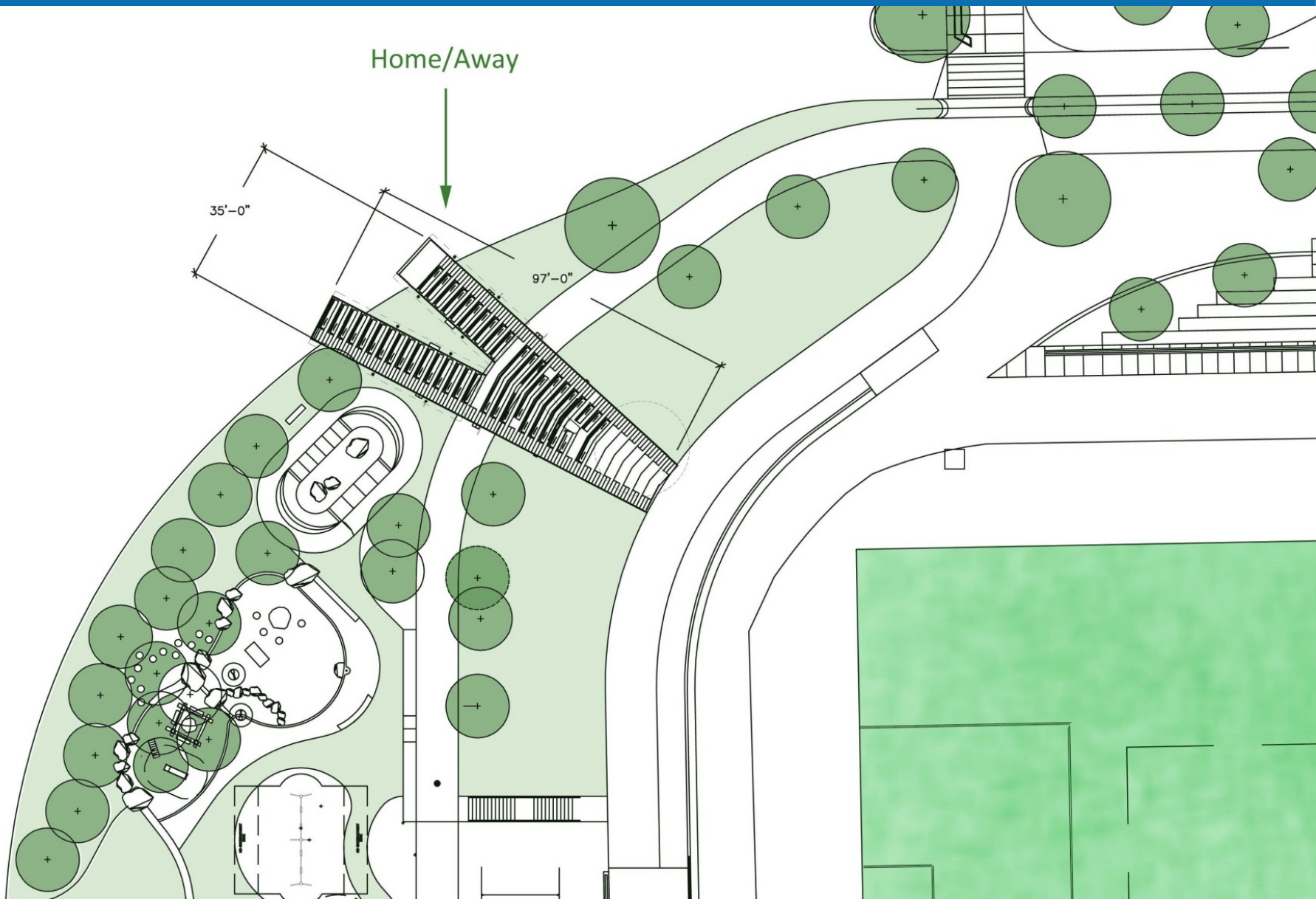




Installation Site - Empire Fields/Plateau Park



Installation Site - Empire Fields/Plateau Park





Process

The Park Board process for review of public art includes technical, site and aesthetic reviews and community engagement.

- Aesthetic review was completed by the Public Art Committee with unanimous support.
- Preliminary technical approval was completed including risk management review
- Staff will work closely with the artists during the detailed design phase to ensure all Park Board requirements are met.
- Community engagement has included meetings with stakeholders involved in the design development of Empire Fields. During installation, a public information program will ensure the community is informed.



Summary

This proposal meets the Board's goals for public art in parks and is fully funded by the Public Art Program.

Home and Away was inspired by a significant piece of Vancouver's sport and recreation history and will be a striking and engaging addition to the diverse active recreation features at Empire Fields and Plateau Park.



Recommendation

THAT the Vancouver Park Board approve the installation of the sculpture “Home and Away”, which celebrates both historic and future activities at Empire Fields and which was commissioned by the Public Art Program and designed for Empire Fields/Plateau Park; with all arrangements to the satisfaction of the General Manager.



VANCOUVER

BOARD OF PARKS
AND RECREATION