



Vancouver Board of Parks and Recreation

Home and Away

Public Art at Empire Fields and Plateau Park

September 28, 2015

Visit the Park Board web site at vancouverparks.ca



Recommendation

THAT, following a successful public engagement process, Vancouver Park Board approve the installation of the functional artwork “Home and Away” at Empire Fields/Plateau Park, with all arrangements to the satisfaction of the General Manager.

Policy Framework

- The Vancouver Board of Parks and Recreation confirms its mandate in the arts and recognizes the arts as an essential element in a vital, creative and balanced city...(and)...The Board provides a vibrant public realm and supports the experience of public art and cultural events in parks.
- The City Public Art Policy aims to incorporate public artwork in all civic buildings, infrastructure, and public open space, in collaboration with civic departments and other stakeholders.

The Public Art Program aims to engage visitors and residents in a stimulating program of public art befitting a world-class city. The Program commissions new contemporary art for public spaces and supports art making by emerging and established artists, both local and international, in new and traditional media.

Projects are funded through private development rezonings and civic capital investment.

www.vancouver.ca/publicart



Public Art in Parks



**Geyser for Hillcrest
Park (2012) \$328,000**



LightShed (2004) \$550,000



**Miracle Mile plinth
(2015) \$40,000**

The Making of *Home and Away*

Stages of the Public Art Process

STAGE 1

- High Level Public Site Consultations
- Public Art Terms of Reference > PAC
- Artist Selection

STAGE 2

- Research and Public Engagement
- Concept Development > Tech Review
- Public Art Committee > Park Board

STAGE 3

- Present Project to the Public
- Detailed Design > Technical Review
- Fabrication/Installation > Tech Reviews

Collaborative Design



- Artists invited onto design team with PFS Landscape Architects
- Opportunity to integrate artwork into design, respond to overall needs of the site and envision past and future uses

Historical References

Centennial Ski Jump (1958)



Deconstruction of temporary stadium (2011)

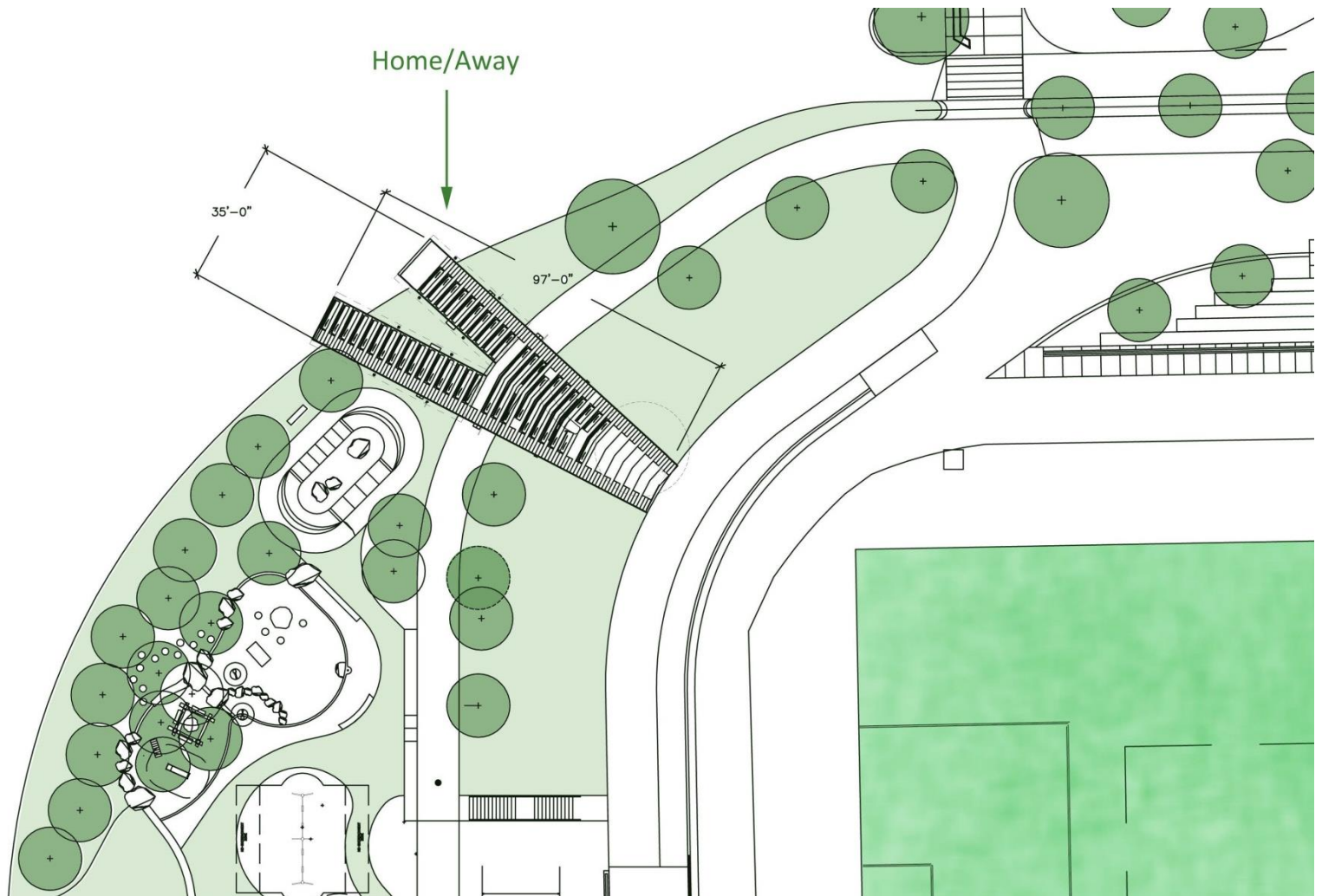


CBC televising the first CFL game from atop Empire Stadium (1958)

Installation Site - Empire Fields and Plateau Park



Plan Detail - Empire Fields and Plateau Park



The Artwork



Home and Away is a 'slice' of play architecture that references the old bleachers and score boards.

Public Engagement

Public Process before May 25, 2015

- Public priorities for Hastings Park Master Plan include public art.
- Artists, in collaboration with the Park design team, participate in consultations with stakeholder and advisory groups during the conceptual development of park design.
- Public Art Committee, on March 9, 2015, reiterated unanimous support for the work, having earlier voiced enthusiasm for the concept on June 2012 and June 2014.

Public Engagement since May 25 - Website and Social Media



www.vancouver.ca/home-and-away

OurCityOurArt blog

#HastingsParkArt

Empire Fields Opening Day - July 18, 2015

- Opportunity for the public to learn more about the artwork - approx. 4000 people attended event
- Staff and artists available throughout the day
- 1000 invitations and information flyers distributed
- Display of physical model and graphics of artwork
- Approximately 200 people viewed display and engaged in conversation



Stated Concerns (less than 10%)

- *Cost:* Cost is consistent with the size and function of the structure. It is fully funded by Capital Plan funds designated for public art.
- *Promotes illegal activity:* The structure will be monitored as other elements in the park. Nothing about the artwork promotes illegal activity any more than any other Park facility.
- *View:* “Home and Away” is a single element in a very large open space. Playland will expand to the north and structures will fill in behind the artwork. Artwork itself provides great views over the entire park and areas beyond.
- *Maintenance:* “Home and Away” will be maintained to the standards of other park structures and exceptional costs will be covered by the Public Art Maintenance Reserve.

Positive Responses (approx. 90%)

- Many people were curious and interested to find out more
- Expressed appreciation for a place to sit
- Felt it would offer great views of activities
- Slide would be fun and keep kids entertained
- Happy to have art in the park

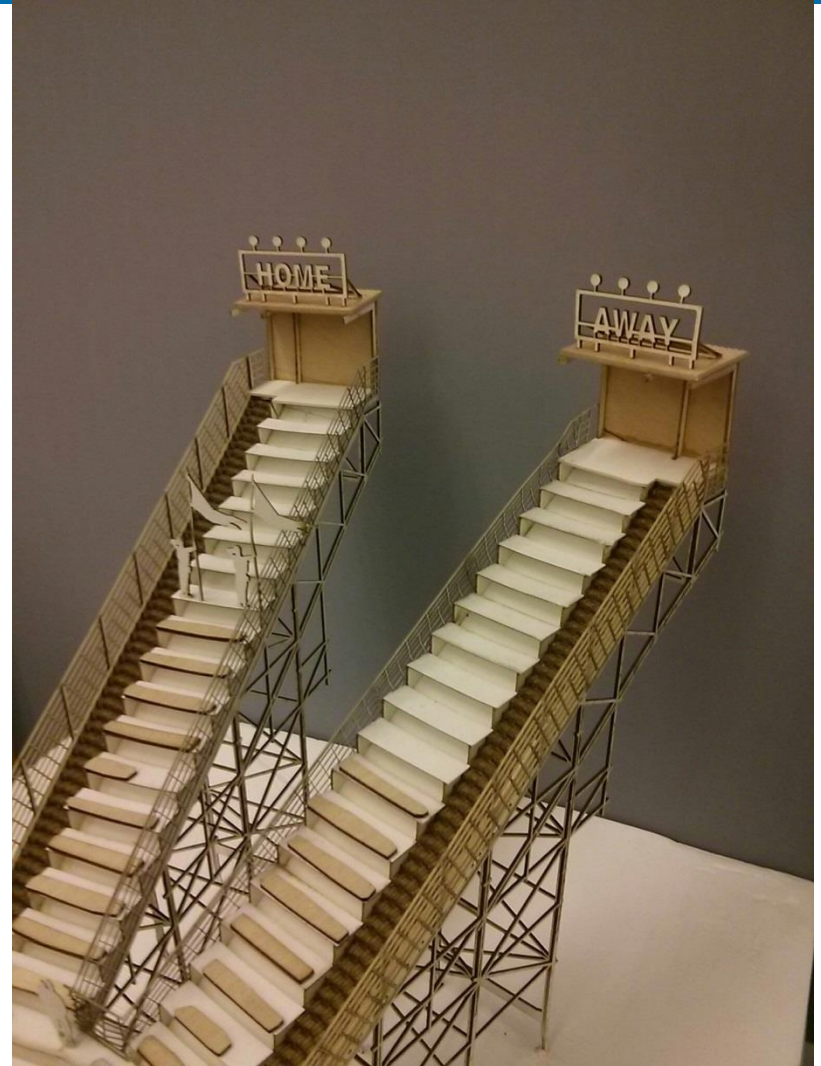


Proposed Next Steps

- October-January: Detailed Design phase
- Staff work closely with the artists to ensure safety, security and maintenance requirements are met
- February-May 2016: Fabrication and Technical Reviews
- June 2016: Installation

Summary

- Contemporary, open structure that references a proud history of Hastings Park structures and activities
- Satisfied process and technical requirements
- Meets Park and City goals for the incorporation of artworks into civic infrastructure and open spaces





Recommendation

THAT, following a successful public engagement process, Vancouver Park Board approve the installation of the functional artwork “Home and Away” at Empire Fields/Plateau Park, with all arrangements to the satisfaction of the General Manager.



VANCOUVER

BOARD OF PARKS
AND RECREATION