

# Public Bike Share Stations in Parks

Park Board Committee Meeting  
September 19, 2016



Seeking Park Board approval for the installation of Public Bike Share (Mobi) stations in parks.

## Incremental roll-out:

- Over 50 stations currently active and in-use on City streets/sidewalks and public/private lands throughout the initial system area which includes the downtown peninsula, extending south to 16<sup>th</sup> Ave from Arbutus St to Main St
- 50 additional stations coming soon
- Once fully implemented, system will consist of 150 stations
- Adjustments may be made to existing stations to address operational needs or safety concerns

mobi

BIKES WE SHARE





- Vancouver Bike Share Inc. (VBS) has submitted to the City a number of proposals for station locations in parks
- Parks staff are continuing to work with Engineering staff
- If approved by the Board, First Nations will review station locations in Stanley Park
- If station locations are supported, staff will proceed with detailed design and installation

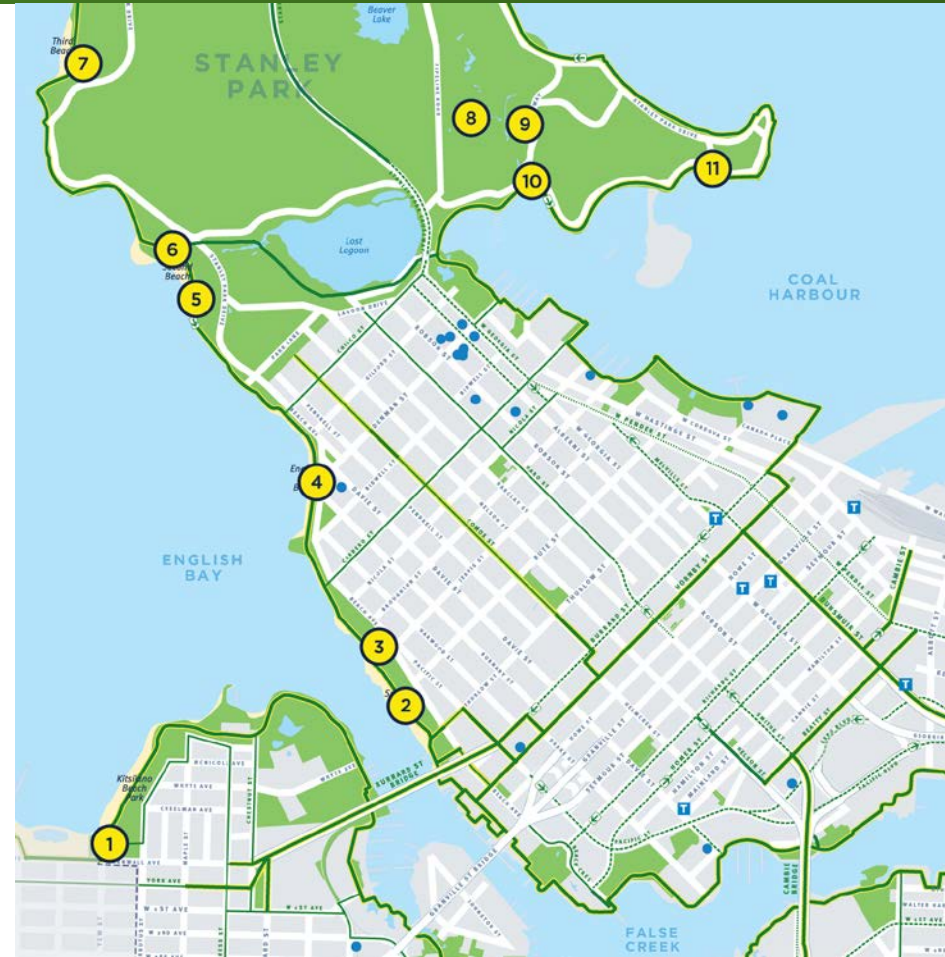
The following criteria were developed and used by Park Board and City staff to guide the siting of Mobi stations:

- Ability to encourage or support sustainable transportation
- Ability to provide access to high demand destinations
- Optimize system utilization and maximize ridership
- Proximity to locations of interest
- Not to be located within 50m of a bike rental shop
- Locate on existing hardscape e.g. on-street, parking lots, underused plaza space
- Minimize impact to trees and habitat
- Ensure circulation is unimpeded
- Maintain access for emergency vehicles and Parks operations vehicles
- Minimize impacts by Mobi re-distribution and maintenance vehicles

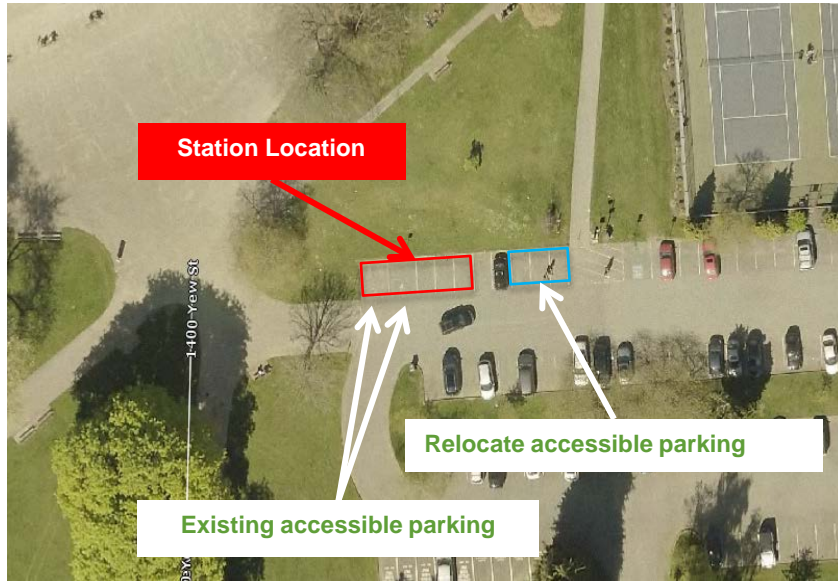


# Public Bike Share – Station Siting

1. **Kitsilano Beach Park** – South Parking Lot
2. **Sunset Beach** – East Parking Lot
3. **Sunset Beach** – West Parking Lot
4. **English Bay** – Bathhouse roof plaza
5. **Stanley Park** – Second Beach, South
6. **Stanley Park** – Second Beach, North
7. **Stanley Park** – Third Beach
8. **Stanley Park** – Stanley Park Pavilion
9. **Stanley Park** – Vancouver Aquarium, East
10. **Stanley Park** – Information Booth
11. **Stanley Park** – Totem Poles



# 1. Kitsilano Beach Park – South Parking Lot



- Station would be located in the pay parking lot at Kitsilano Beach Park along the bike route
- Proposed station location would replace 5 car parking spaces stalls with 32 bike docks
- Accessible parking would be relocated adjacent to pay station and pathway leading to the restaurant

## 2. Sunset Beach – East Parking Lot



- Station would be located in the pay parking lot at Sunset Beach Park, adjacent to the paved hockey rink.
- Proposed station location would replace 3 car parking spaces stalls with up to 32 bike docks.
- Station easily removed for special events.

# 3. Sunset Beach – West Parking Lot



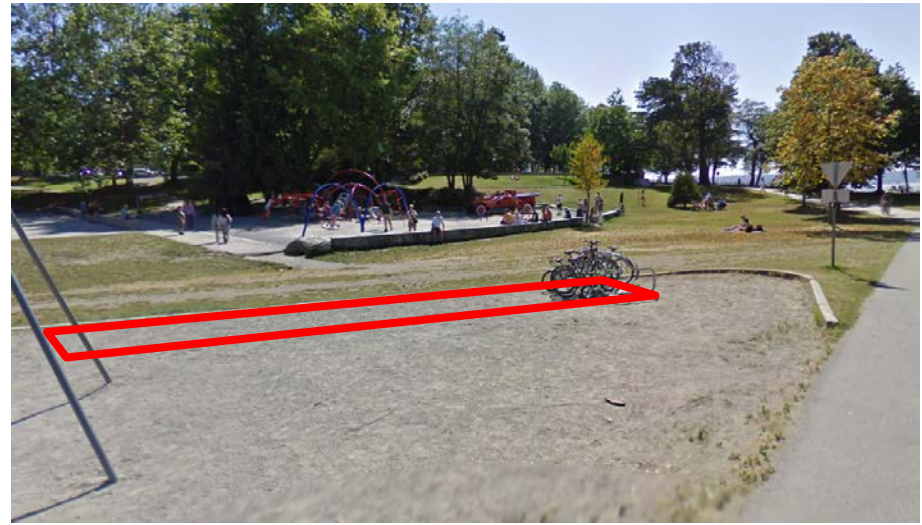
- Station would be located in the pay parking lot near the Jervis pump station.
- Proposed station location would replace 5 car parking spaces with 32 bike docks.

# 4. English Bay – Bathhouse roof plaza



- Station would be located on the roof of the English Bay Bathhouse, adjacent to Cactus Club Cafe
- Station would include 30 bike docks
- Station will not penetrate the membrane, and will be easily removed for special events

# 5. Stanley Park – Second Beach, South



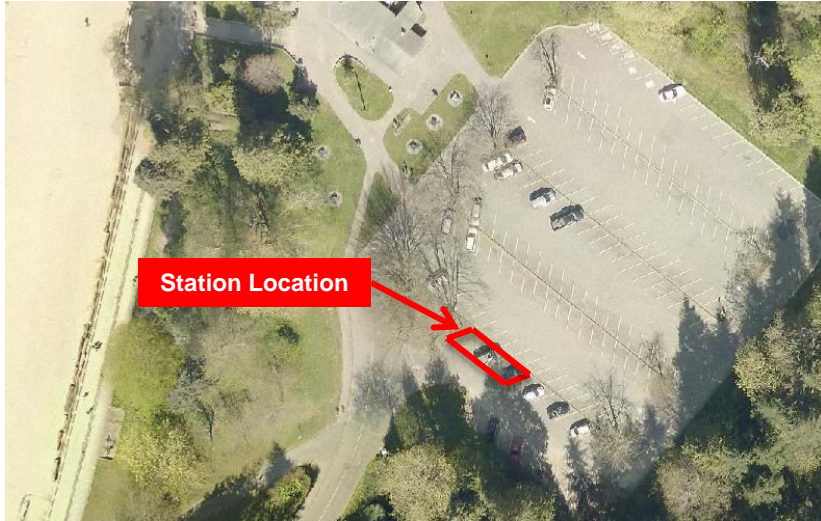
- Station would be located along the south end of the triangular exercise area on existing compact gravel.
- The existing bike rack would be relocated to the eastern end of the gravel triangle.
- Station would include 16 to 20 bike docks

## 6. Stanley Park – Second Beach, North



- Station would be located along the small retaining wall southeast of the concession area on existing hardscape
- Re-locate signage and stenciling as appropriate
- Station would include 14 to 18 bike docks

# 7. Stanley Park – Third Beach



- Station would be located in parking lot at entrance to Third Beach
- Proposed station location would replace 5 car parking spaces with 32 bike docks

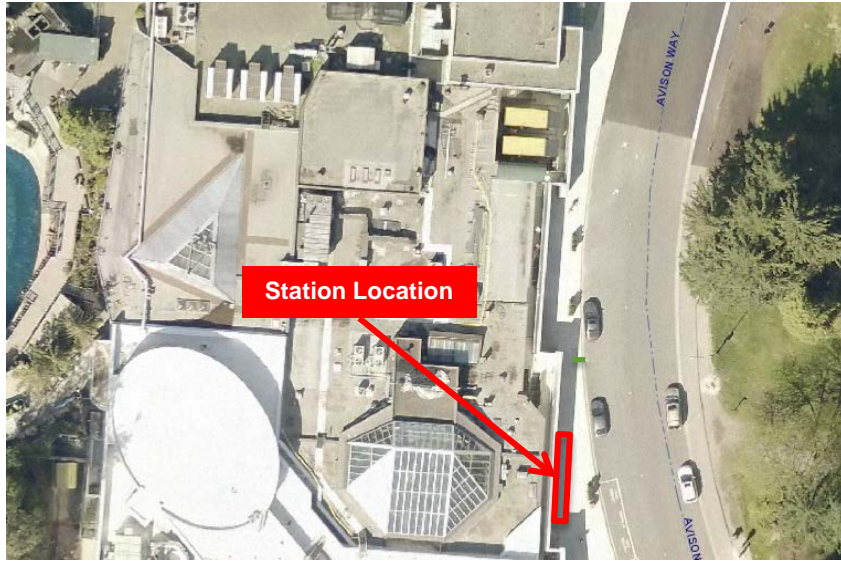


## 8. Stanley Park – Stanley Park Pavilion



- Specific location TBD
- Parks staff and City working closely with Stanley Park Pavilion management and Stanley Park Ecology Society to identify most suitable location

# 9. Stanley Park – Vancouver Aquarium, East



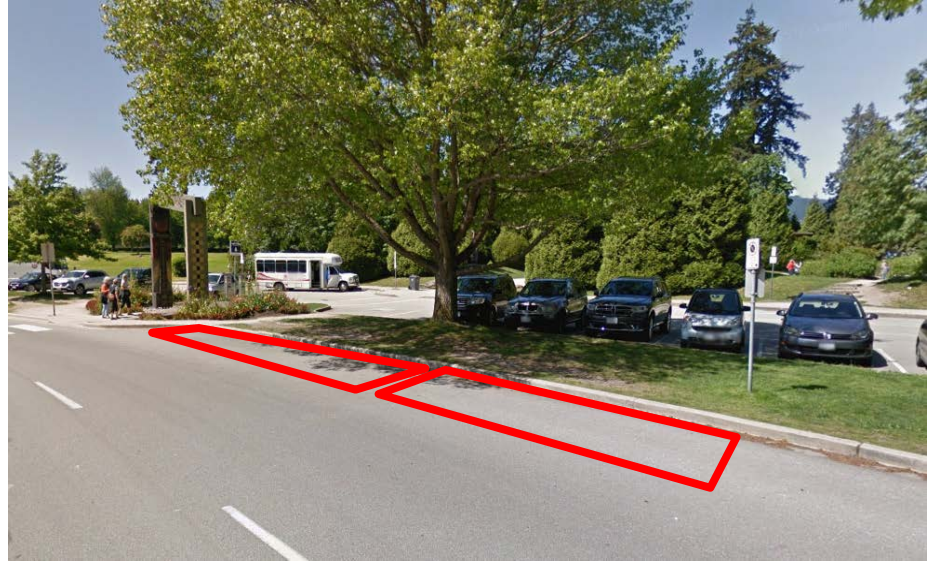
- Station would be located on the east side of the Vancouver Aquarium, adjacent to Avison Way
- Station would include 16 bike docks
- May need to relocate litter can and planter box, consideration for access door
- Exact location will be refined in coordination with Vancouver Aquarium staff

# 10. Stanley Park – Information Booth



- Station would be located adjacent to the no longer used horse-drawn carriage information booth on Stanley Park Drive.
- Station would include 18 to 20 bike docks

# 11. Stanley Park – Totem Poles



- Station would be located on Stanley Park Drive adjacent to the Totem Pole Parking lot
- Proposed station location is in a no-parking zone with 24 to 28 bike docks

- Seek approval for proposed station locations.
- Continue to work with Park Board staff, First Nations, and stakeholders to refine design details for locations within Stanley Park.
- Coordinate station installation with Parks staff.

- A. THAT the Vancouver Park Board approve the proposed locations for Public Bike Share (Mobi) stations in parks, subject to site-specific conditions, generally as outlined in this report;
  
- B. THAT approval of locations in Stanley Park be conditional on support of the Musqueam, Squamish and Tsleil-Waututh First Nations;

- C. THAT approval of all Public Bike Share station locations be conditional on the operator removing them at no cost to the Park Board as required for operational or programming situations that may arise (such as special events or filming), in accordance with the same notification guidelines and terms of removal as agreed upon by the City of Vancouver and Vancouver Bike Share Inc.; and
  
- D. THAT the Park Board's Manager of Business Development be directed to review proposed sponsorship acknowledgment on Mobi stations outlined in this report.

- E. THAT staff report back to the Board on the results of the implementation in one year;
- F. THAT consideration be given to providing the Park Board with access to Mobi communication channels for the purpose of promoting Park Board facilities and as mitigation to offset projected parking revenue loss.



