



China Creek North Park Upgrades and Glen Pump Station

Park Board Committee Meeting
Monday, July 10, 2017



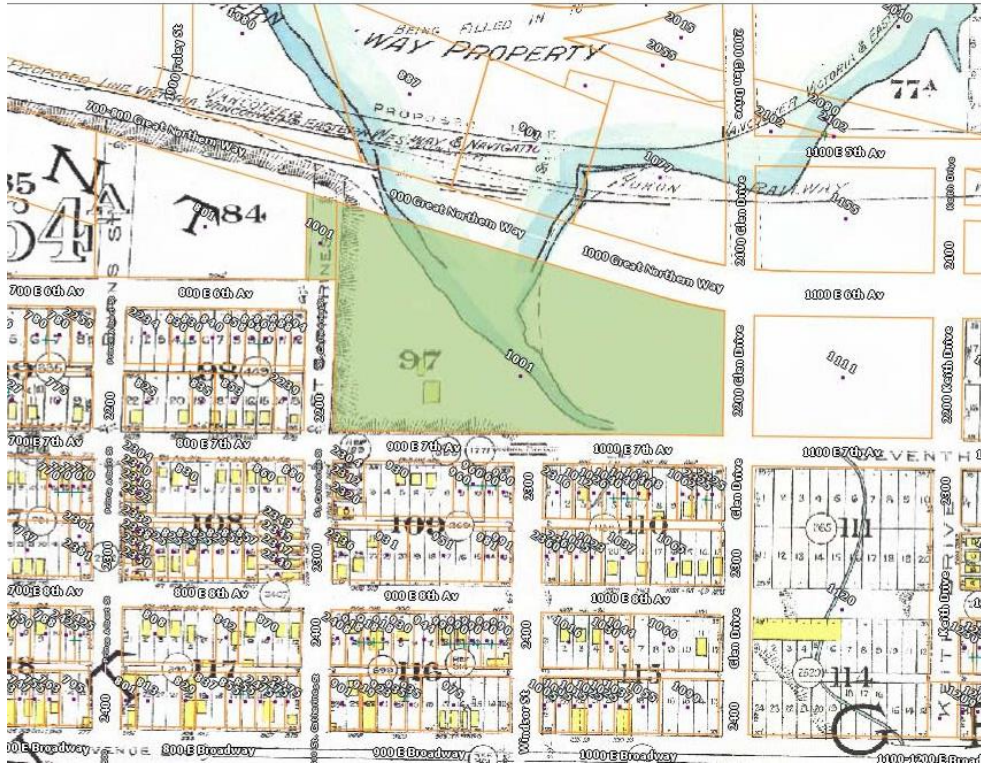
The purpose of this presentation is to:

- Share the results of the public engagement processes;
- Provide information about and seek approval for proposed improvements in China Creek North Park, including: accessibility and circulation improvements, a playground renewal, and the Glen Pump Station renewal including a new public washroom;
- Enable staff to progress to the detailed design stage and to meet the proposed construction schedule.

Background

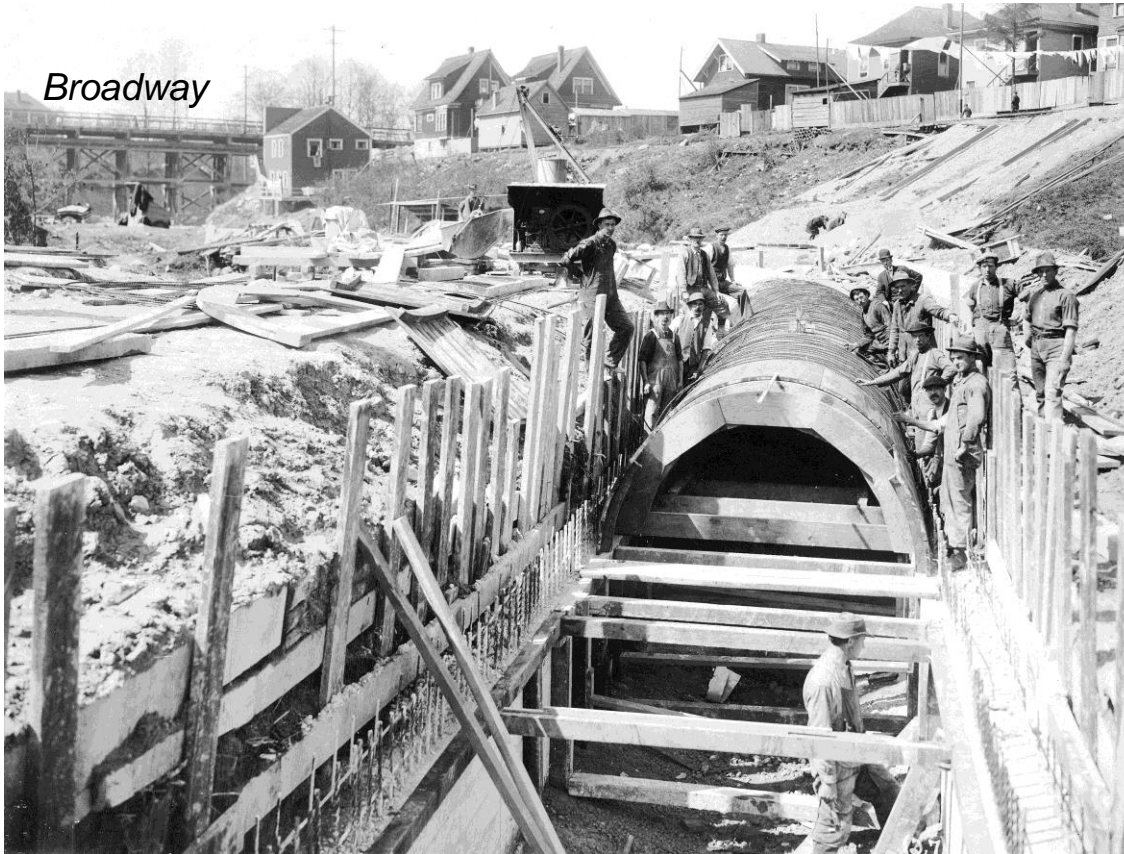


Background – Old Streams



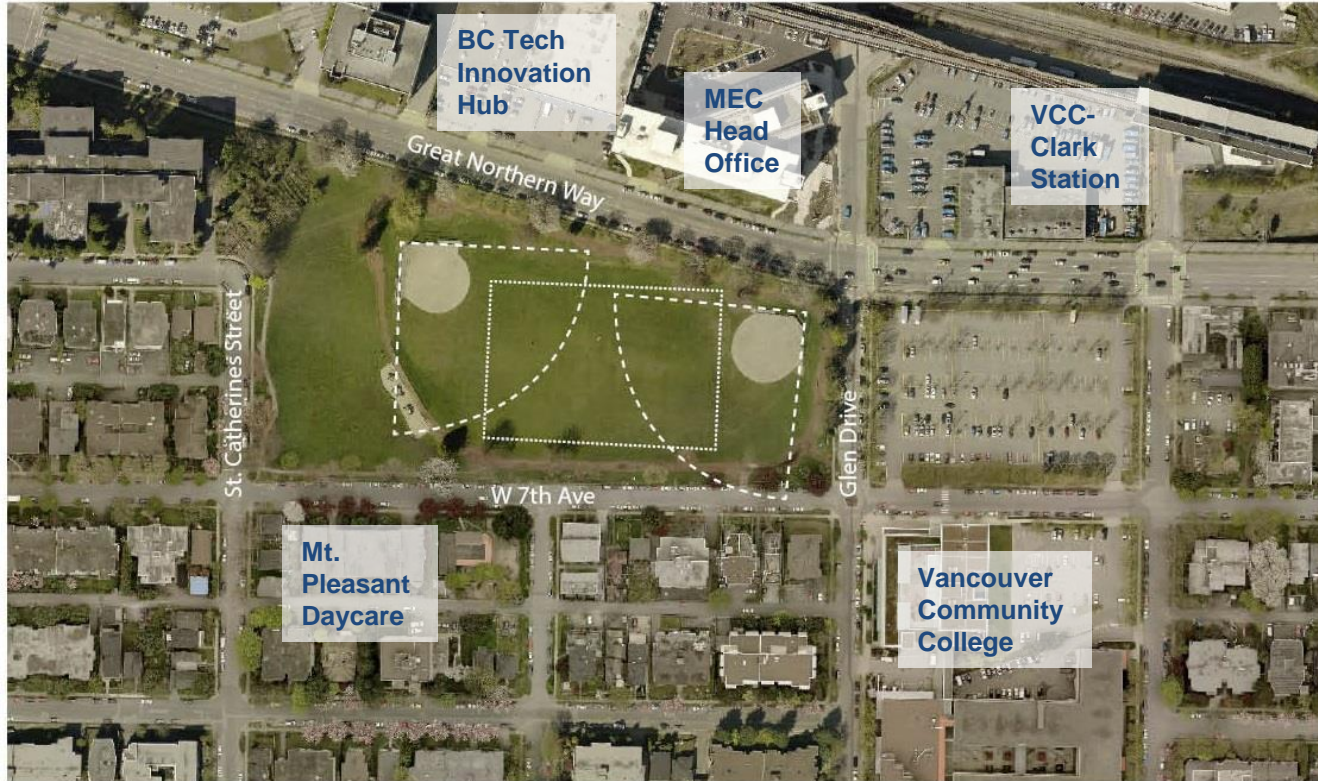
- A creek once flowed through the site as water made its way to False Creek.

Background – Old Streams



- Contamination
- Ravines filled over
- Creek diverted to pipe

Background – Current Conditions



Surrounded by:

- Residential
- Educational
- Business
- Transit



Sports Fields:

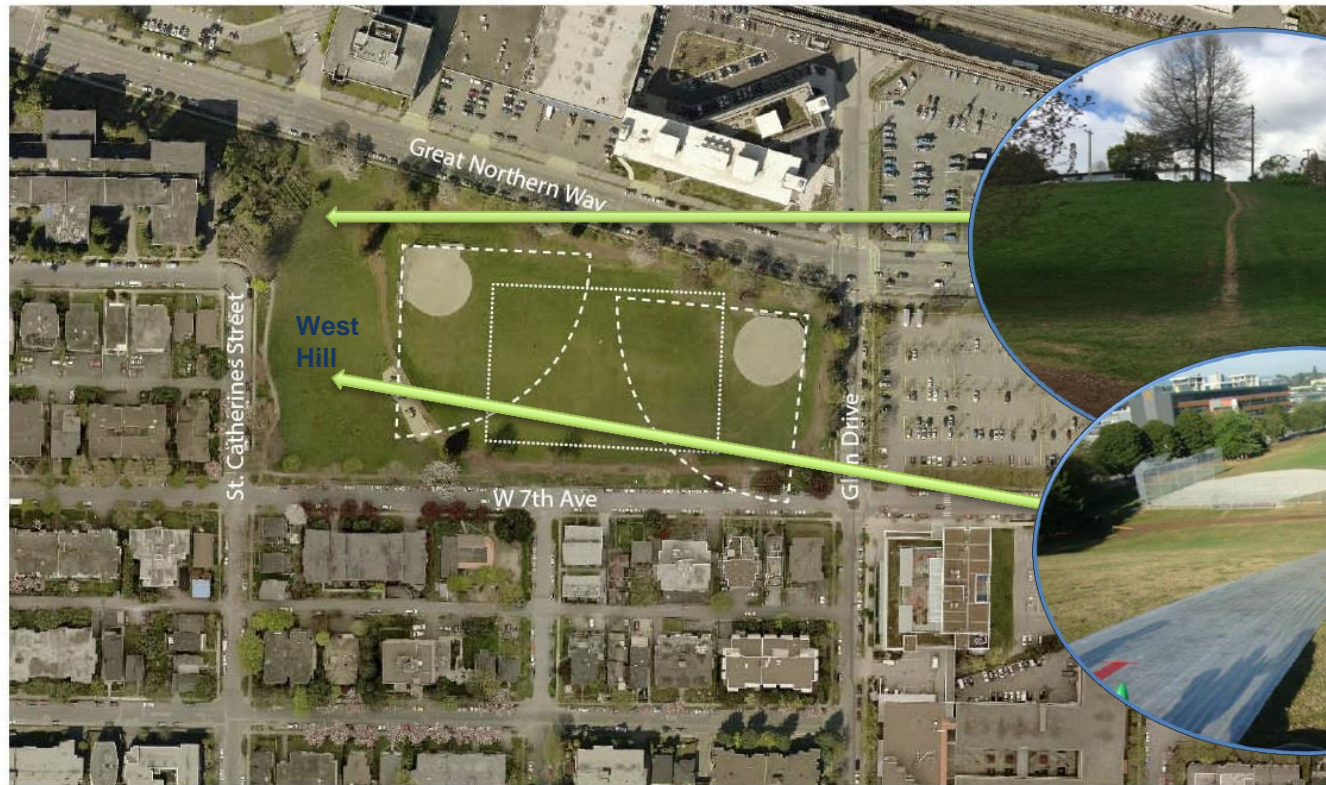
- Two under-sized softball
- Seasonal soccer
- All well utilized

Background – Current Conditions



Running track
and exercise
stations

Background – Current Conditions

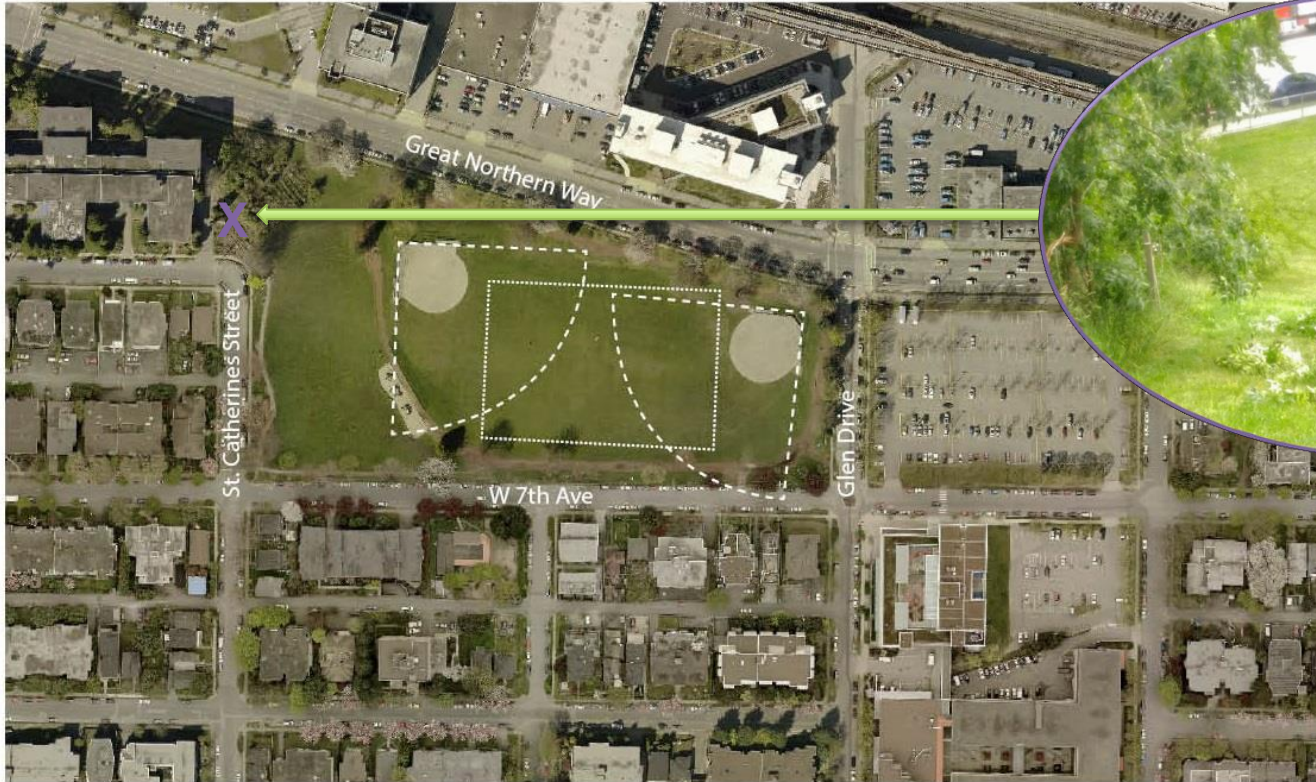


West hill
accessibility
issues



Recreation
opportunities

Background – Current Conditions



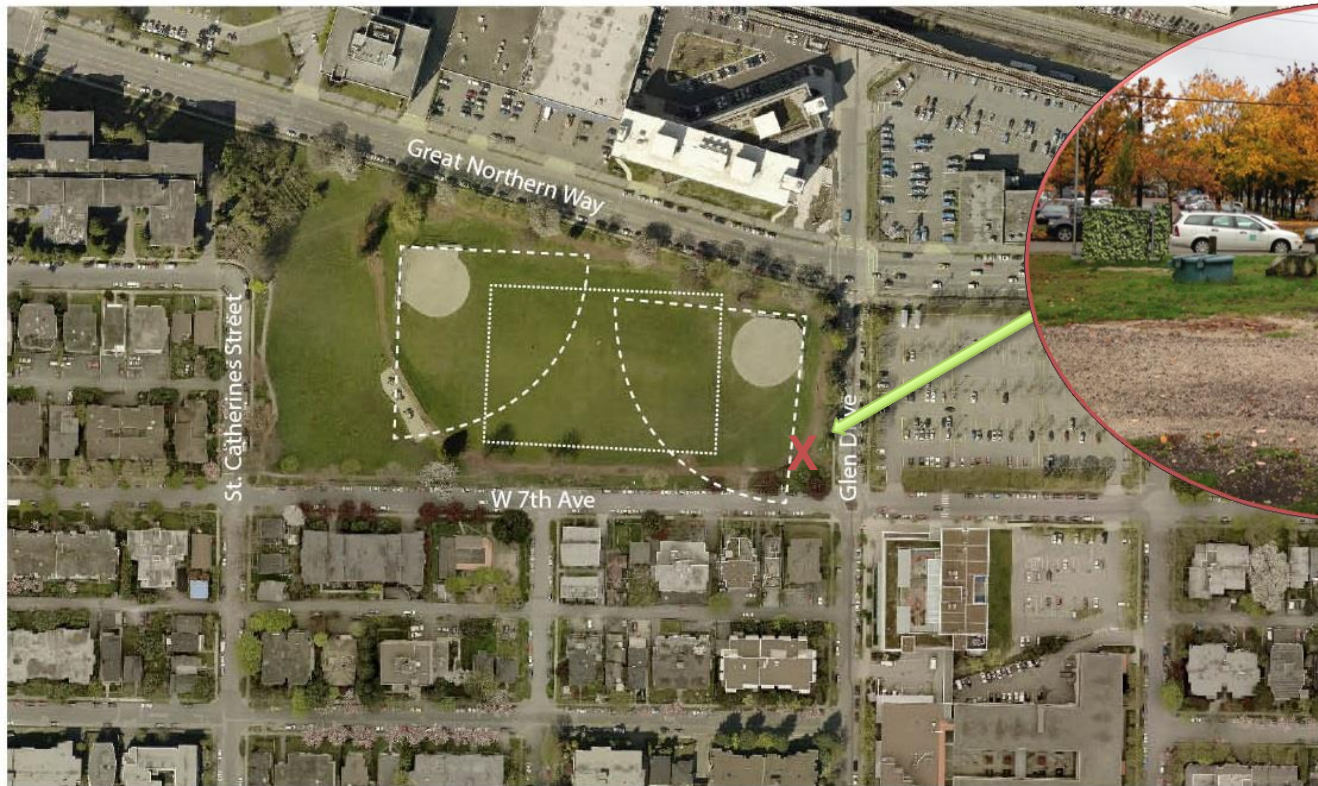
“Means of
Production”
Community
Garden

Background – Current Conditions

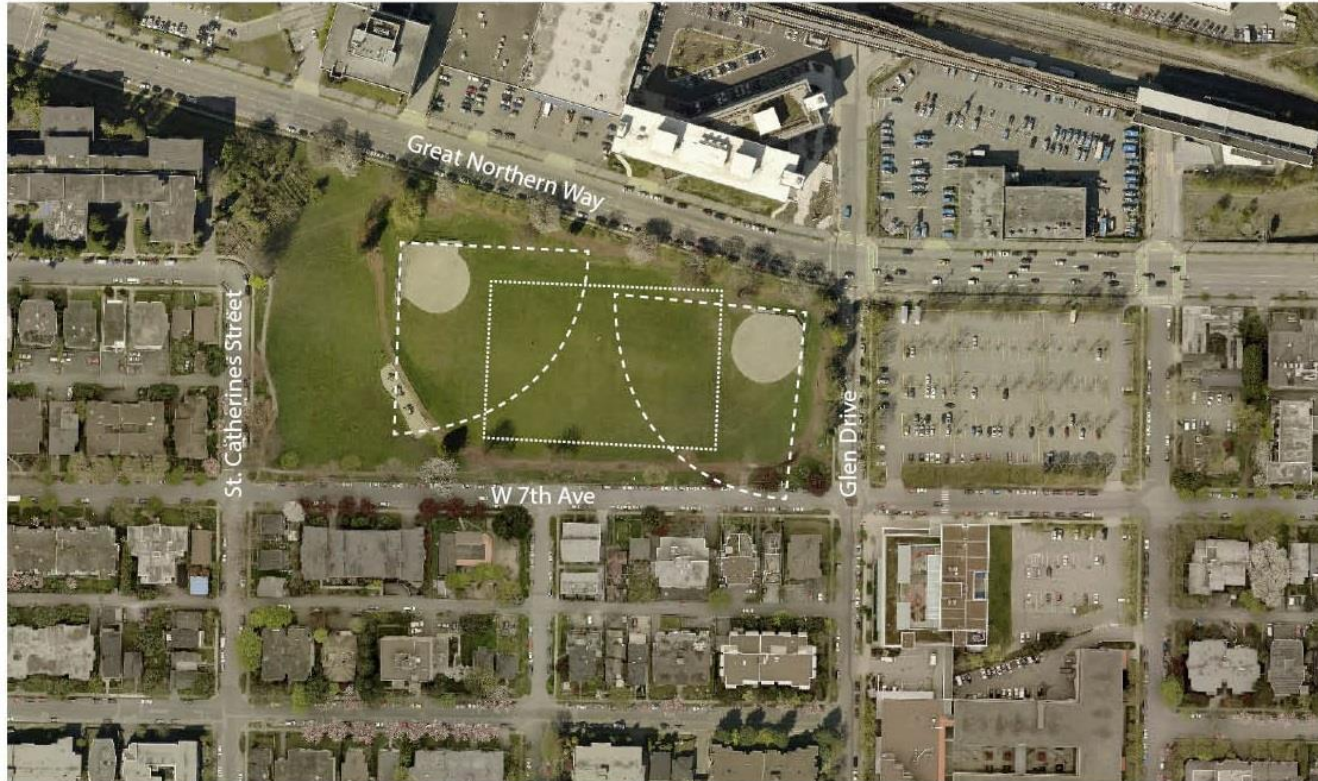


Outdated
playground

Background – Current Conditions



Glen Pump
Station



Other:

- Dog off-leash issues
- Accessibility issues
- Mature trees

- The playground and the pump station require replacement
- Park Board Staff and City Engineering working with consultants
- Collaboration with REFM, Community Stakeholders including field users, and Persons with Disabilities Advisory Committee (PWDAC)
- Two public engagements: December 2016, May 2017



Public Consultation Process



- Public consultation for China Creek North Park sought feedback on all proposed changes in the park including:
 - The playground replacement
 - The new Glen Pump Station building
 - Pedestrian connections on the west hill
 - Overall accessibility improvements
- The process included two public open houses, two public surveys, and review with stakeholder groups

- Open house one held at Mt. Pleasant Community Centre on December 8, 2016
- Open house two held in the park on May 25, 2017
- Advertised through signage, flyer, and webpage
- Survey on Talk Vancouver and webpage for two weeks following open houses

- First engagement respondents asked to provide feedback on:
 - Playground location and types of play
 - A pedestrian connection on the west hill
 - Layout, and amenity options for the new pump station
- Results guided conceptual plans presented at the second open house

- Second engagement respondents asked to provide feedback on:
 - Playground concept
 - New pump station and washroom building
 - Pedestrian connections on the west hill
 - Overall park accessibility improvements
- Additional comments regarding dog off-leash issues and potential for a creek restoration project were received

Community organizations that provided input on behalf of their membership were:

- Vancouver Community College
- PWDAC
- Metro Men's Soccer
- Metro Women's Soccer
- Vancouver Recreational Softball
- VS & E Investment Softball
- Method Studios Softball

Proposed Park Improvements



Pedestrian & Accessibility Improvements

■ Southeast corner



■ Northeast corner

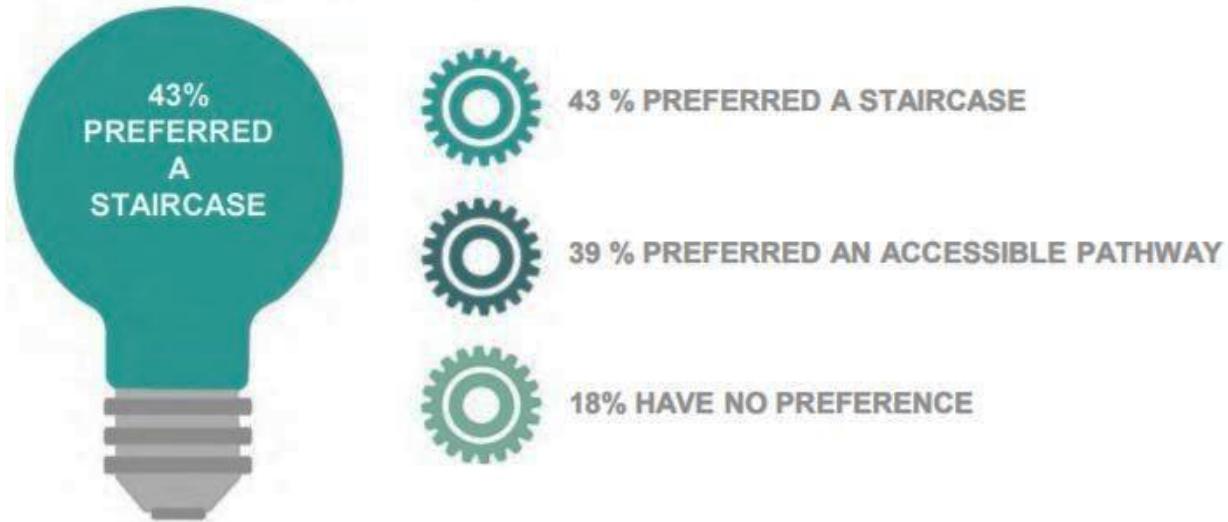


■ West hill



Public Feedback January 2017:

- 88% of respondents supportive of creating a pedestrian connection on west hill



West Hill

- Concerns over loss of recreational use
- Need for accessible connection to playground and down hill from St. Catherines Street
- Coordination with community garden

General Accessibility

- Uneven track surfacing, connection to washroom
- VCC muster station
- Accessible parking

Pedestrian Connection & Accessibility

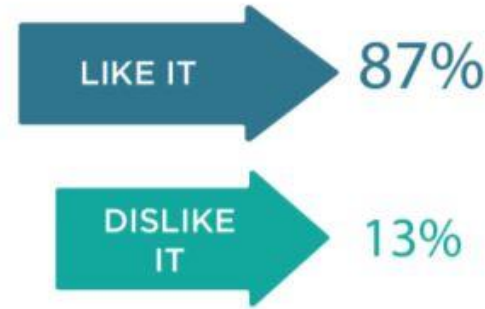


Public Feedback from May 2017 was supportive of the proposed pedestrian and accessibility improvements.

WHAT DO YOU THINK OF THE DESIGN FOR THE NEW STAIRCASE IN THE NORTHWEST CORNER OF THE PARK?



WHAT DO YOU THINK OF THE DESIGN FOR THE NEW ACCESSIBLE PATHWAY CONNECTING TO THE PLAYGROUND IN THE SOUTHWEST CORNER OF THE PARK?



WHAT DO YOU THINK OF THE SITE
IMPROVEMENTS FOR UNIVERSAL
ACCESSIBILITY?



Concerns include:

- Need for double width stair and bike runnel to support recreation
- Bank corners of path for kids scooters and trikes
- Consider track surfacing carefully
- Loss of green space

Playground Replacement



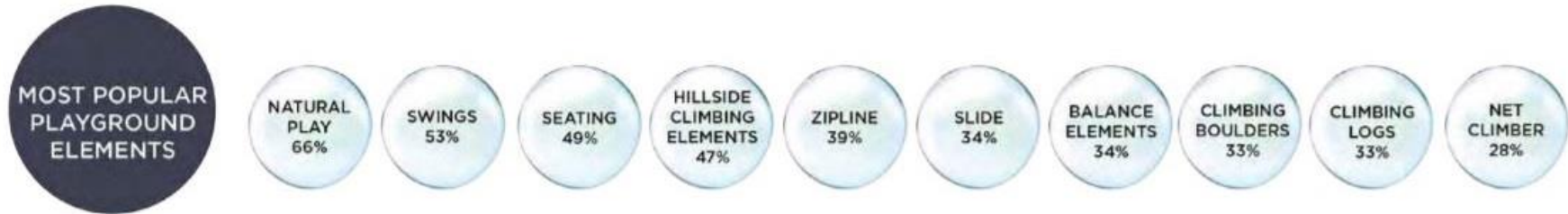
- Location
- Outdated
- CSA compliance
- Accessibility

Public Feedback January 2017:

- Keep playground in current location



- Include nature play, swings, seating, hillside climbing elements, zip-line and a slide



- Ensure playground has inclusive, universally accessible elements for both children and caregivers

Playground Replacement



Feedback from May 2017
indicated general approval

- Detail design will modify swings and colour of surfacing based on public feedback

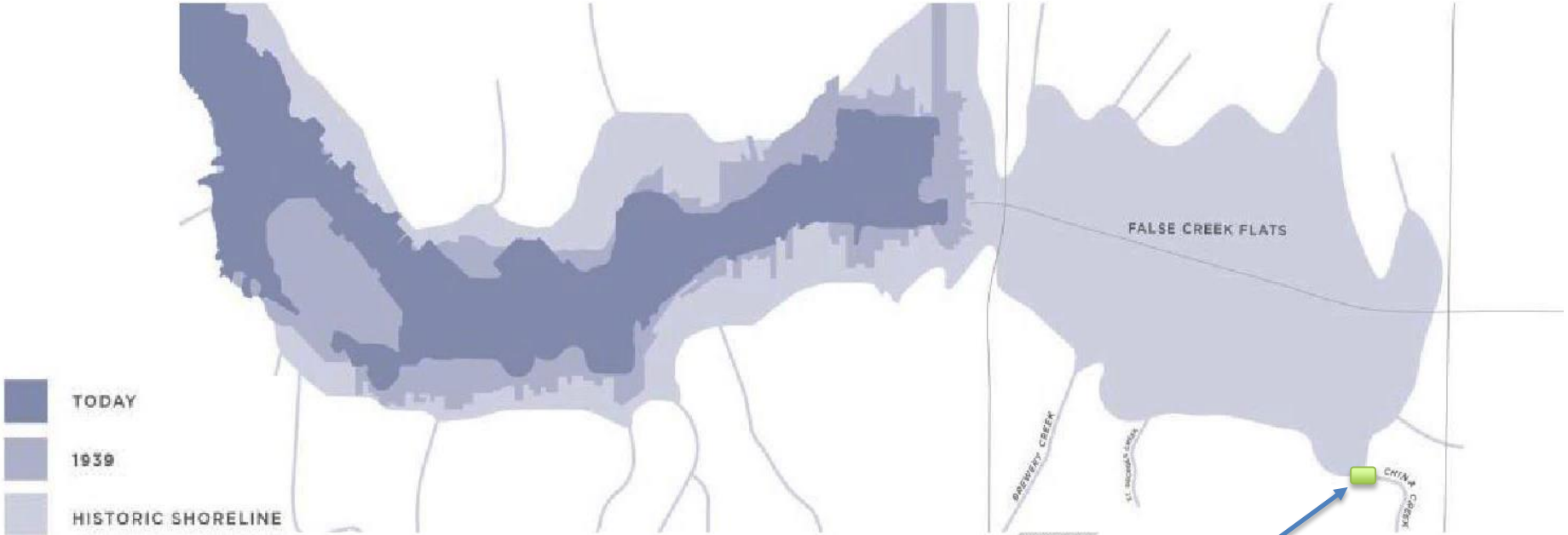




Additional feedback regarding dog off-leash use in the park:

- Desire for off-leash area
- Conflict between park uses
- Mt. Pleasant identified as underserved neighbourhood
- Site specific planning to be addressed through People, Parks and Dogs Strategy.

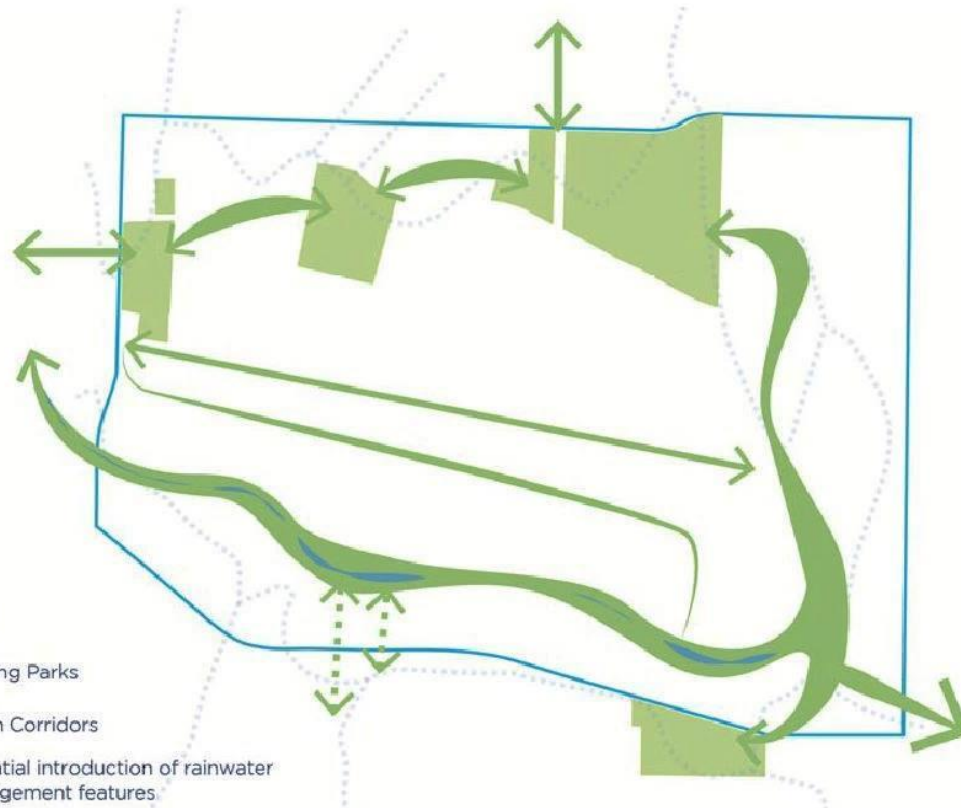
Creek Daylighting



China Creek Park

Early investigations into creek daylighting potential showed:

- Sewer pipe alignments prohibitive, removal of sports fields
- Historic contamination remains an issue, risk of leaching
- Storm water main bisecting park can contain combined sewage during wet weather
- Separation of the China Creek sewer catchment will continue in future capital plans



- “False Creek Flats Area Plan”
- Staff have opportunity for GI project
- Rain water collection at 7th Ave high point
- Explored during detail design

- Board decision
- Detail design - Summer & Fall 2017
- Contract award - Winter 2018
- Construction - Spring 2018
- *Glen Pump Station replacement on an independent timeline*

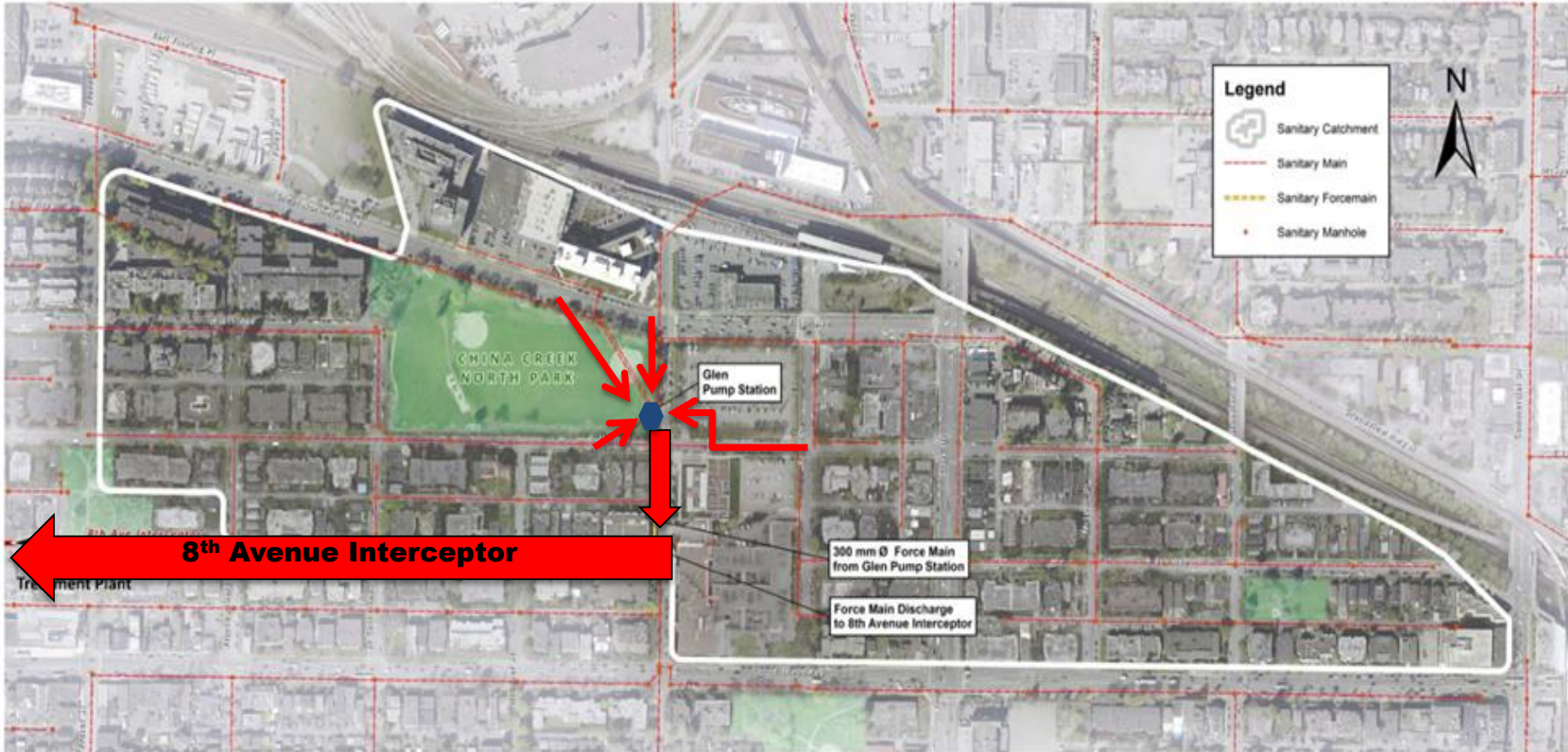
Glen Pump Station Replacement



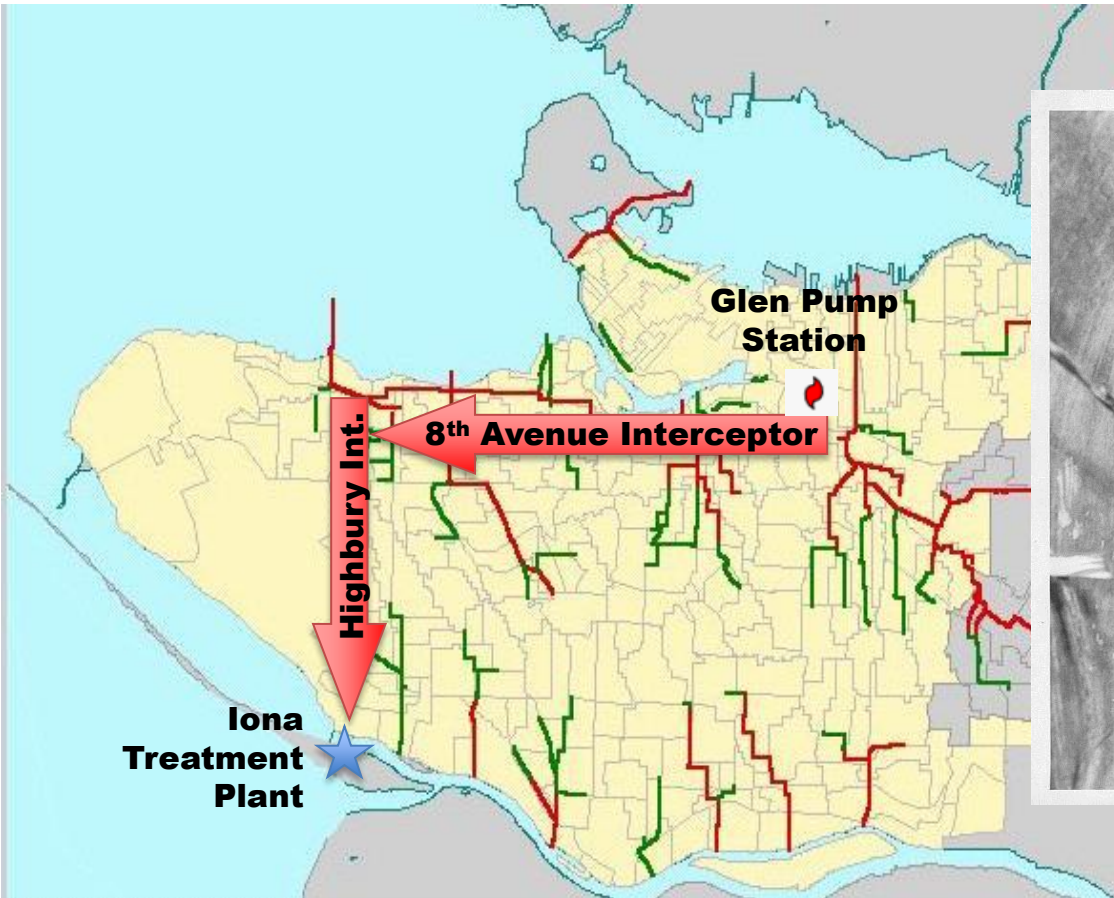
Glen Pump Station



Purpose of the Pump Station



Purpose of the Pump Station



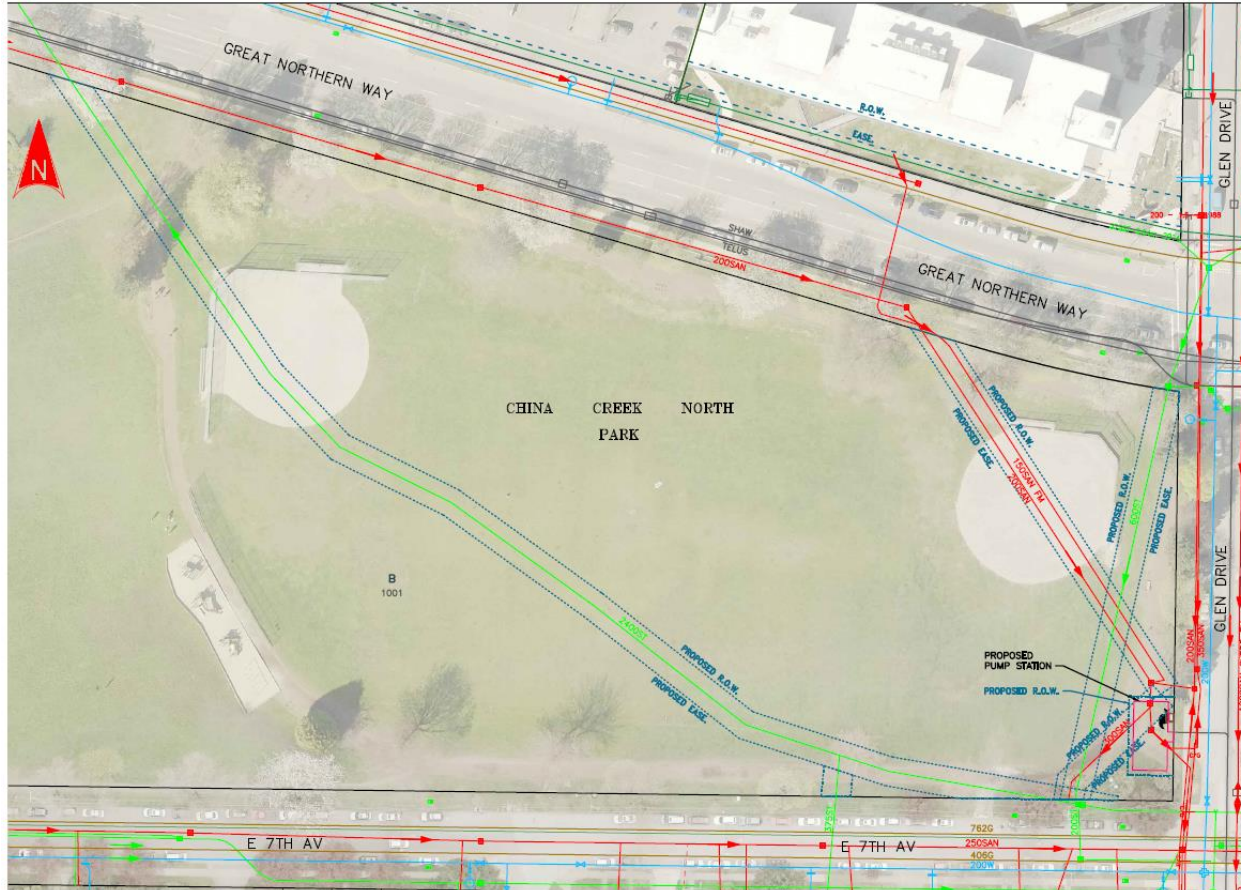
Purpose of the Pump Station

- Direct sewage towards the treatment plants
- Eliminate discharges into the environment
- Protect water quality
- Protect human health
- Enable recreational use of water bodies

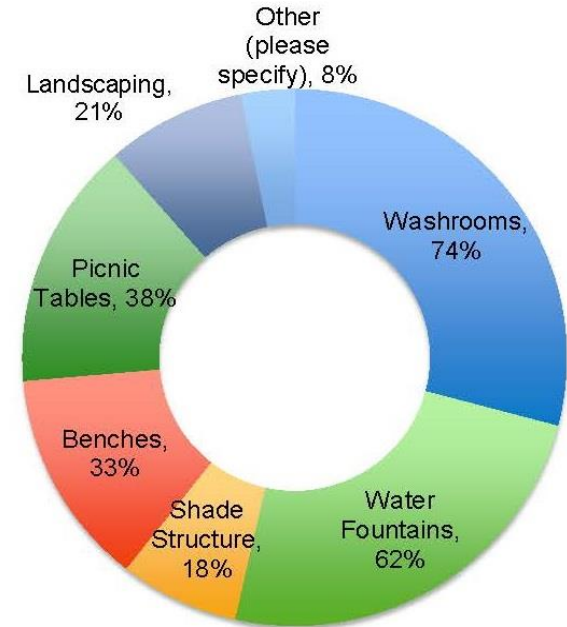


- Installed in 1972 (45 yrs old)
- Reached the end of its service life
- Must be updated to meet WorkSafeBC requirements
- At risk of spilling if not replaced
- Spill/overflows would discharge into False Creek
- Limited capacity to accommodate growth
- Location linked to proximity of adjacent utilities

Utility Statutory Right of Way



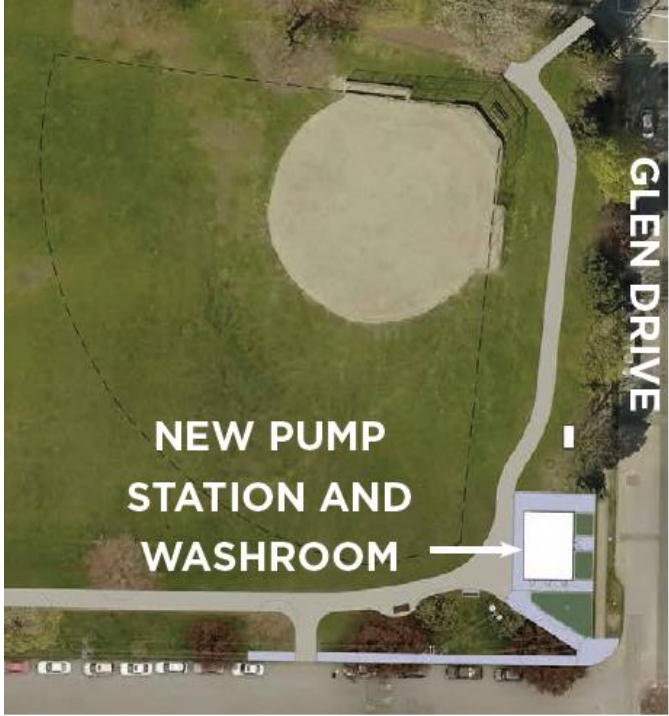
- Minimize impacts to the ball diamond and reduce the physical footprint of the facility
- Integrate the pump station into the park
- Top Desired Amenities include:
 - Washrooms
 - Water fountain
 - Seating Area (Benches, Picnic Tables)



Design Response

- Pumps, odour control, and other mechanical equipment placed underground below the building superstructure,
- Include public washroom facility, and
- Improvements to southeast corner of the park (improved accessibility, seating, water fountain, interpretive graphic display).

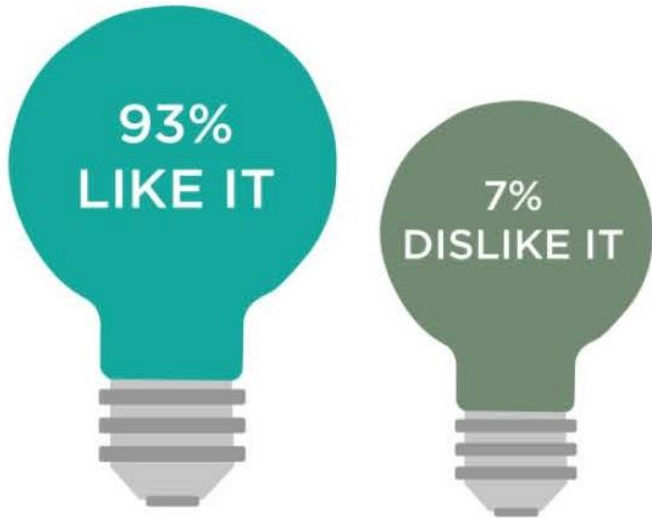
Conceptual Design and Site Layout



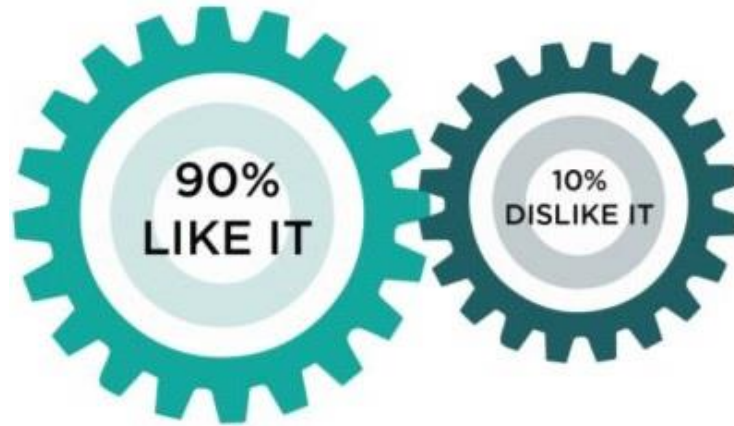
Interpretive Graphic Display



Overall, community members are in favour of the concept design for new pump station, washroom and interpretive panel.



Pump Station & Washrooms



Interpretive Panel

- Board decision
- Detailed Design and Permits ~ 6 months
- Construction Start – Spring 2018
- Project Completion – Spring 2019

Financing



The playground, track re-surfacing, and west hill connections will be funded through the Park Board's capital playground, pathway and accessibility programs for parks

- Estimated cost of the park upgrades is \$800K
- Revised at detail design phase
- Funding is to be addressed in the 2018 budget

The Glen Pump Station and associated works will be funded by Engineering's Pump Station Capital Program, including:

- Universal washroom facility
- Interpretive panel
- Drinking fountain
- Seating
- Accessibility improvements on the southeast corner

The proposed improvements for China Creek North Park align with the four directions and nine goals as identified in the Vancouver Park Board's Strategic Framework.



Many of the existing features in China Creek North Park have reached the end of their lifespan and require replacement

- Playground, track, circulation and accessibility, pump station
- Park Board will receive added amenities
- Strong support for proposed improvements
- Alignment with Strategic Plan
- Proceeding to detail design phase, will allow new amenities to be delivered on schedule.

- A. THAT the Vancouver Park Board approve the proposed playground replacement, stairway and accessible pathway improvements in China Creek North Park, as described in the report;
- B. THAT the Board approve the replacement of the Glen Pump Station and building including a public washroom facility, in China Creek Park North as described in this report; and

- C. FURTHER THAT the Board authorize the establishment of one or more right of way agreements for the development and operations of the Pump Station facility and other sewerage infrastructure in form and content satisfactory to the Park Board General Manager, City Engineer, and Director of Legal Services.