



# PEOPLE PARKS & DOGS



## Strategy Update Report Reference

Regular Park Board Meeting  
Monday, July 24, 2017





# Purpose

To provide an update on work to date on the People, Parks, Dogs strategy including the issues still to be resolved.





# Presentation Outline

- 1 Background
- 2 Consultation
- 3 Themes
- 4 Next Steps



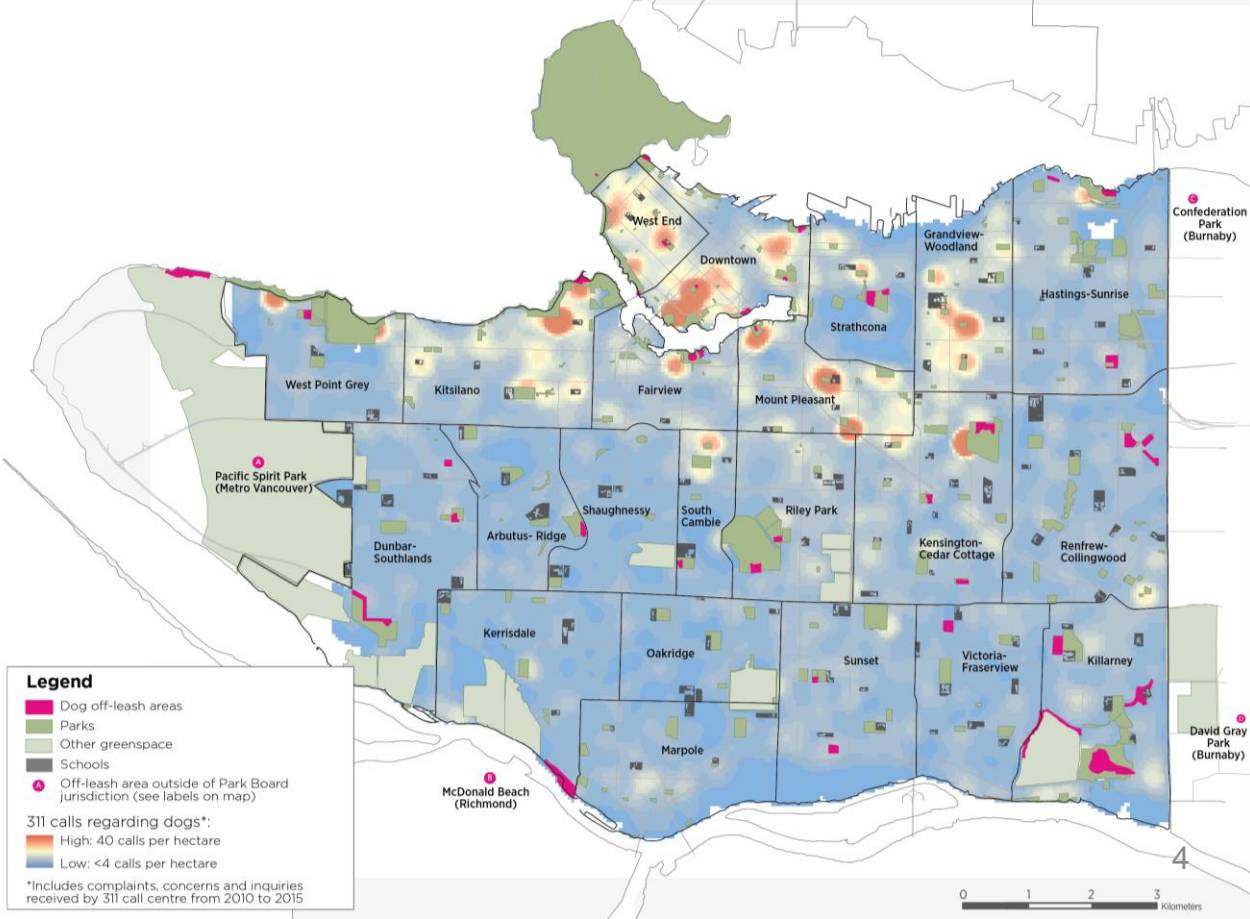




# Background

The challenges of people with dogs and people without dogs sharing parks

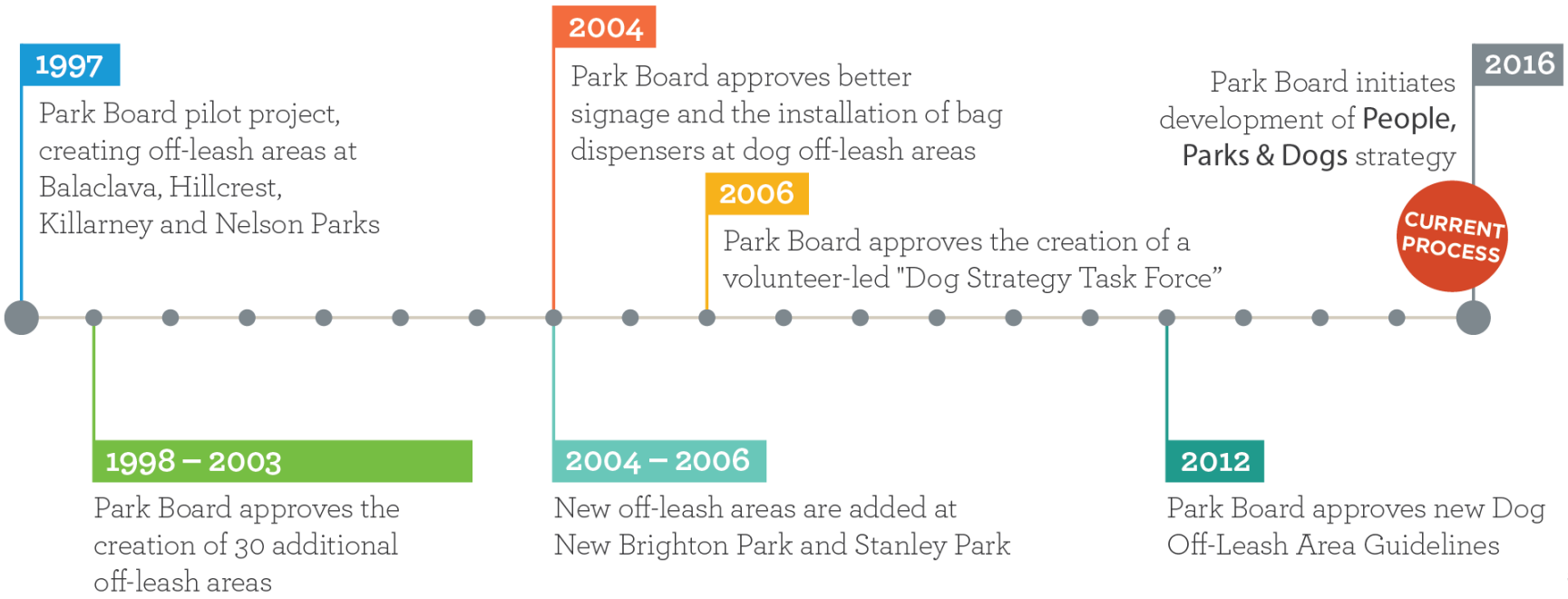
**Over 30,000 calls annually to 3-1-1 regarding dogs. Each call costs ~\$6**





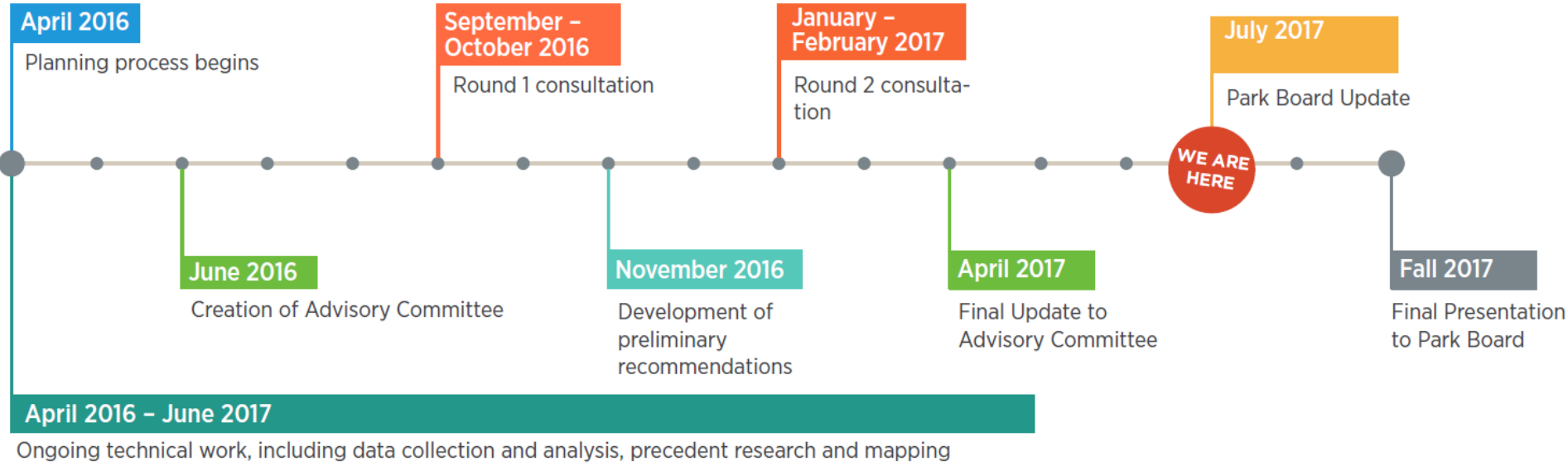
# Background

## History of Dogs in Vancouver Parks





# Background Project Schedule





# Background

## Where are we now?



- Sharing work to date
- Draft received from consulting team
- Finalizing recommendations
- Outstanding issues under review
  - Enforcement
  - Boundaries



# Work Informing the Recommendations



Workshops with Park Board staff and City of Vancouver Staff, and an online staff survey



Mapping and Analysis



Advisory Committee Meeting



Reviewing records of previous work



In-person surveys in dog off-leash areas



Statistically-valid phone survey



Learning from other cities



Consultation Surveys and Events





# Consultation – Events and Participation



## Round 1 Consultation

September 8 – October 14 2016

- 135 people attended four open houses
- 117 people attended four small group meetings
- 4057 people completed surveys
- 50 people mailed or emailed feedback
- 4,373 stakeholder interactions



## Round 2 Consultation

Jan 30 – Mar 10 2017

- 104 people visited 7 in-person events
- 2548 people filled out a survey
- 32 people mailed or emailed feedback
- 2,684 stakeholder interactions

**Over 7,000 total stakeholder interactions through consultation**



## Consultation – Polarized feedback

More dog off-leash areas, equally distributed across the city that are safe and appealing.



Enforce keeping dogs on-leash outside allocated spaces, owners taking responsibility for dog activity and picking up dog waste.

**60%** of respondents agree with the recommended amenities, surfacing and sizes of Destination and Neighbourhood dog off-leash areas.

**70%** of respondents agree with removing time-of-use restrictions.

**65%** of respondents agree with a proposed pilot project to add off-leash hours in selected downtown parks.

**165** additional comments on the need for increased enforcement of bylaws.

**124** additional comments requesting improved dog waste enforcement and management. <sup>10</sup>



## Vision for People, Parks and Dogs Strategy

Consultation helped develop vision to guide themes & recommendations.

**Vision:** To promote the *comfort* and *safety* of all park users by fostering responsible dog ownership and clarifying rules, boundaries and etiquette for dog off-leash activity in Vancouver parks; to integrate a variety of appealing and safe dog off-leash spaces in our parks, easily accessed by local residents who directly support their success.



# Four Emerging Themes Informing Recommendations



1. Access
2. Design
3. Stewardship
4. Enforcement



# 1. Access



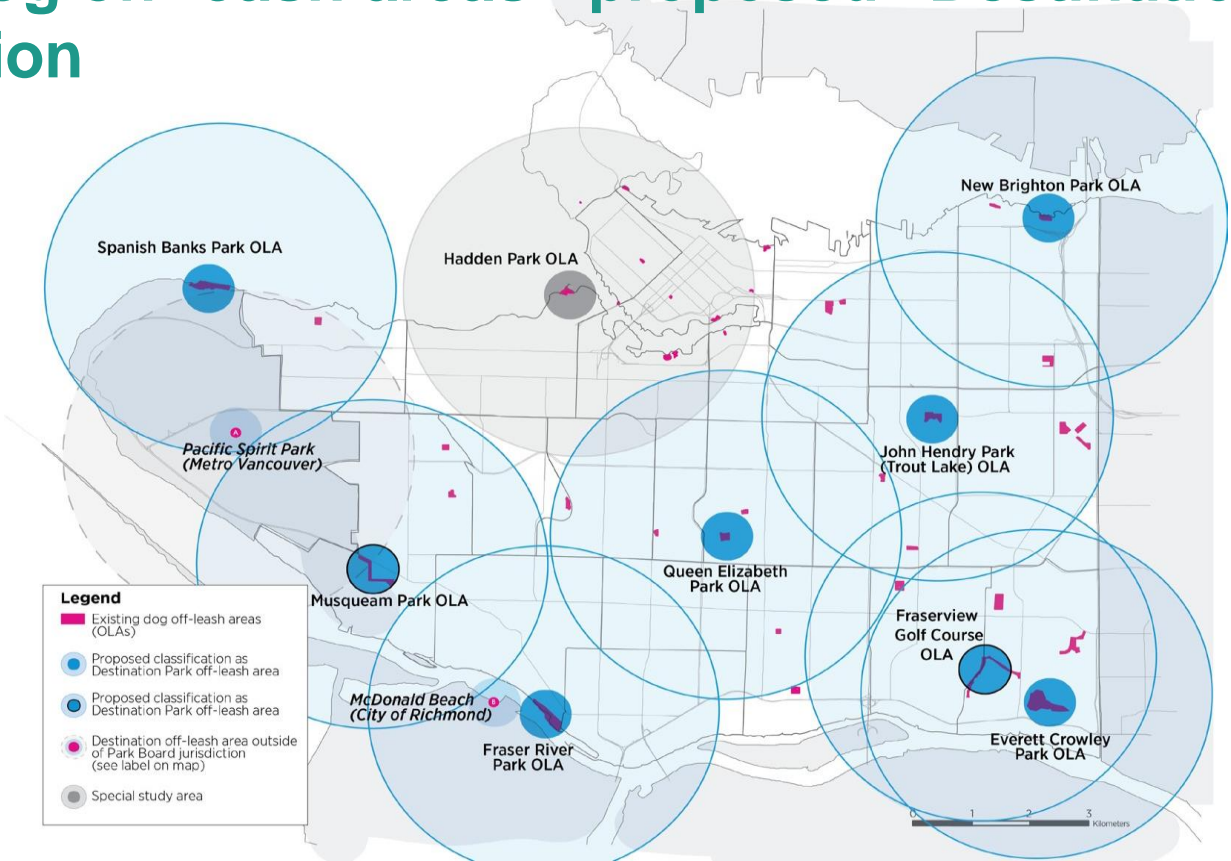
Equal access to dog off-leash areas located throughout the city.





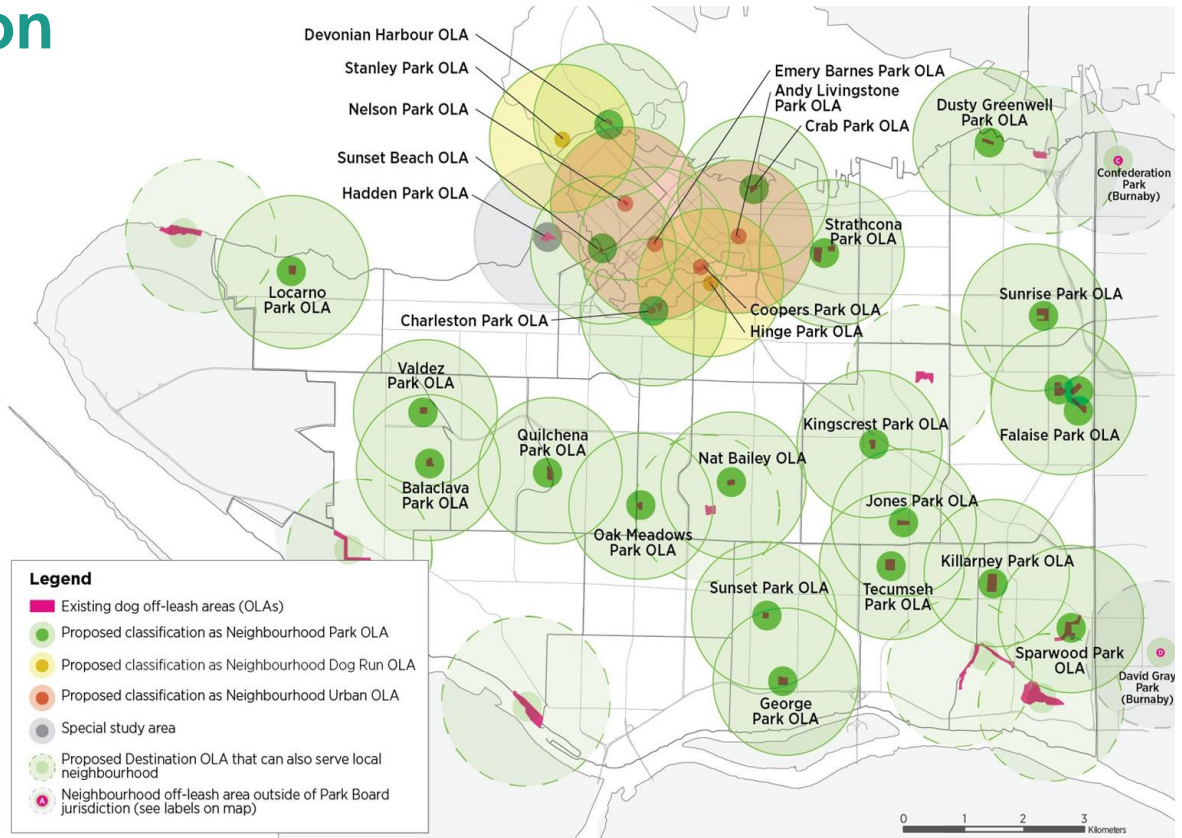


# Existing dog off-leash areas - proposed “Destination” classification



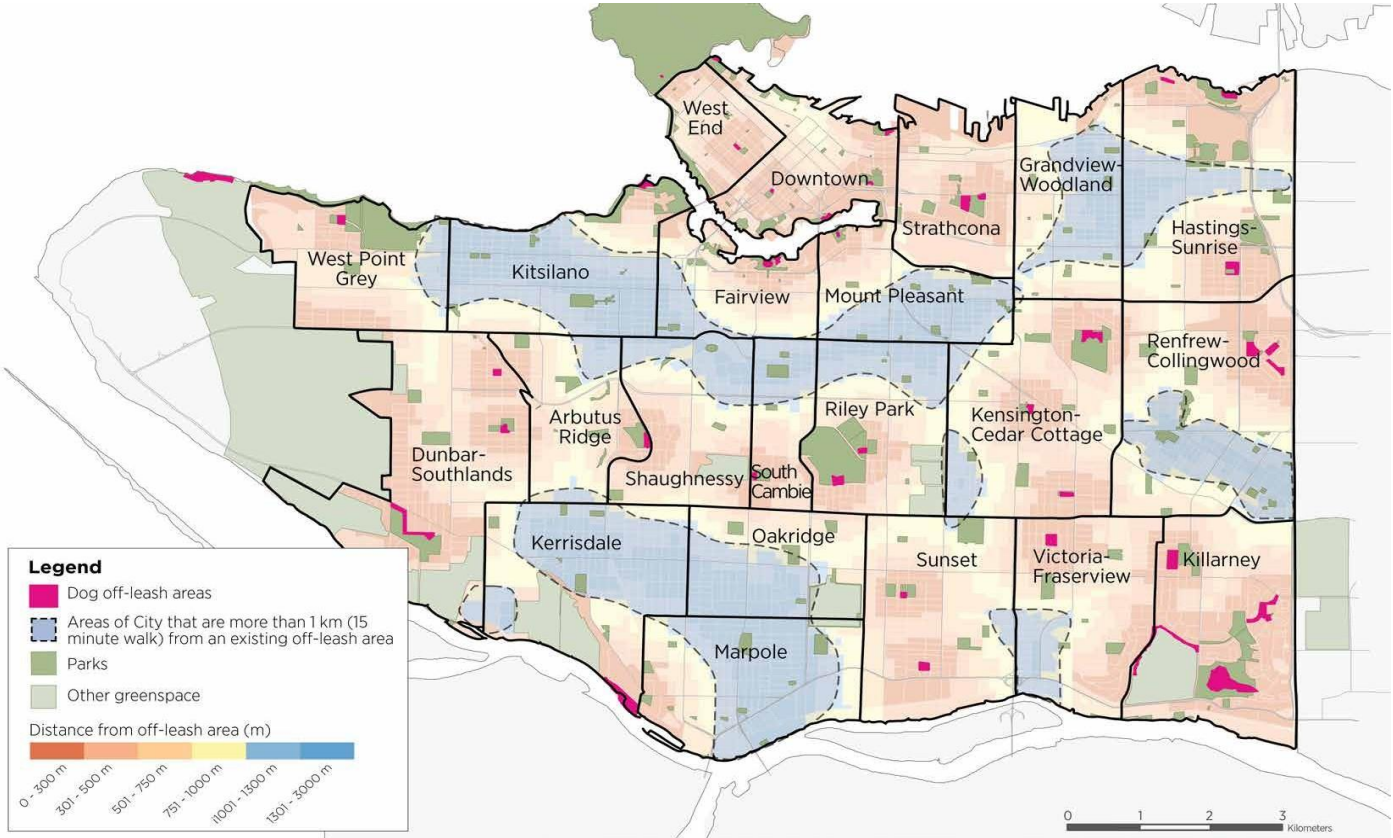


# Existing dog off-leash areas - proposed “Neighbourhood” classification





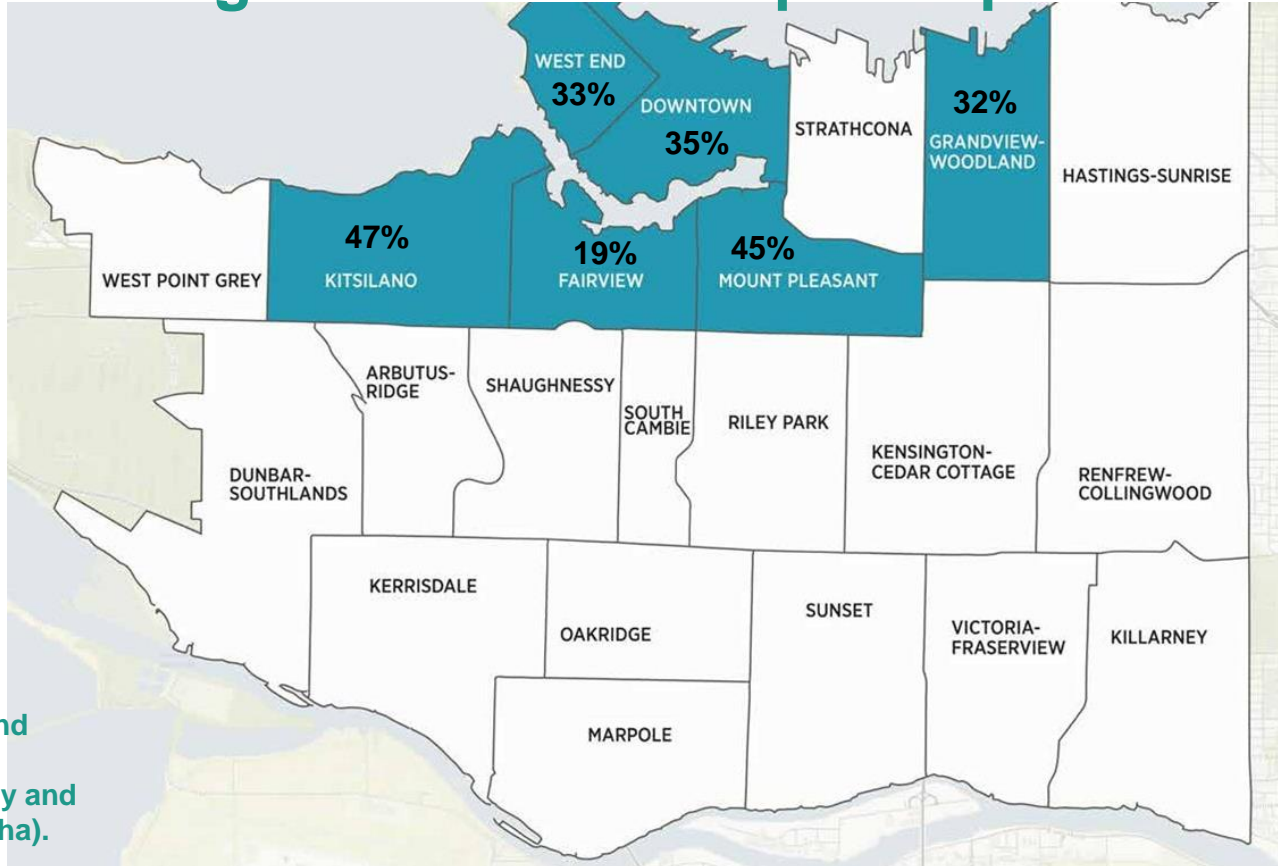
# Underserved Neighbourhoods - target 1 km service area







# Underserved Neighbourhoods and public priorities



Based on current and future population, licensed dog density and dog off-leash area (ha).







## 2. Design



More variety in design of dog off-leash areas.



Consider both people with and without dogs in parks with off-leash areas.



Clear and effective boundaries for dog off-leash areas.





# Make off-leash areas appealing to use

Recommendations include:



Size



Universal access



Standard & Special Amenities



Use, number and type of gates



Site Circulation



Appropriate vegetation



# Standard Amenities





# Special Amenities



Small / Shy Dog Area



Lighting



Drinking Fountains



Mix of Park Conditions



Washrooms



Agility Features



Dog Wash Station



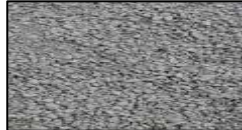
Water for Play





# Surfacing Options

## Currently in Use



Fine-crushed gravel



Grass (natural turf)



Sand



Concrete



Wood Chips

## Pilot Project Recommendations



Synthetic turf ('zeofil' infill)



Grass-gravel 'schottenasen'



New types and blends of durable, drought resistant grasses





# Clear, concise and consistent signage

Welcome!

## Dog Off-Leash Area

**QUEEN ELIZABETH PARK**

**PLEASE BE COURTEOUS AND RESPECTFUL**

- DO NOT FEED WILDLIFE
- DO NOT FEED BEES, BIRDS OR OTHER ANIMALS
- DO NOT FEED OTHER VISITORS

**FOR IMMEDIATE CONCERNS OR ANIMAL CONTROL CALL 3-1-1**  
CITY OF VANCOUVER BY-LAW NO. 9150 / VANCOUVER.CA

**MORICES**

**CONTACT THE VANCOUVER PARK BOARD THROUGH THE VANCONNECT APP**

Contact and By-Law Information



# Environmental Considerations



- Biologist assessments
- Setbacks
- Wildlife-friendly fencing
- Educational signage
- Dog waste management
- Water run-off
- Soil erosion and compaction



# Suite of Potential Boundary Tools

## Secure Boundaries



## Non- Secure Boundaries



- Options identified by consultant
- Discussed during consultation
- Investigating appropriate use in Vancouver context
- Recommendation forthcoming in the final draft report



# 3. Stewardship



Support the success of dog off-leash areas through effective management, communication and education.







# Initiatives to better manage dog waste

**98%** of survey respondents agree that dog waste management is the top challenge for off-leash areas.

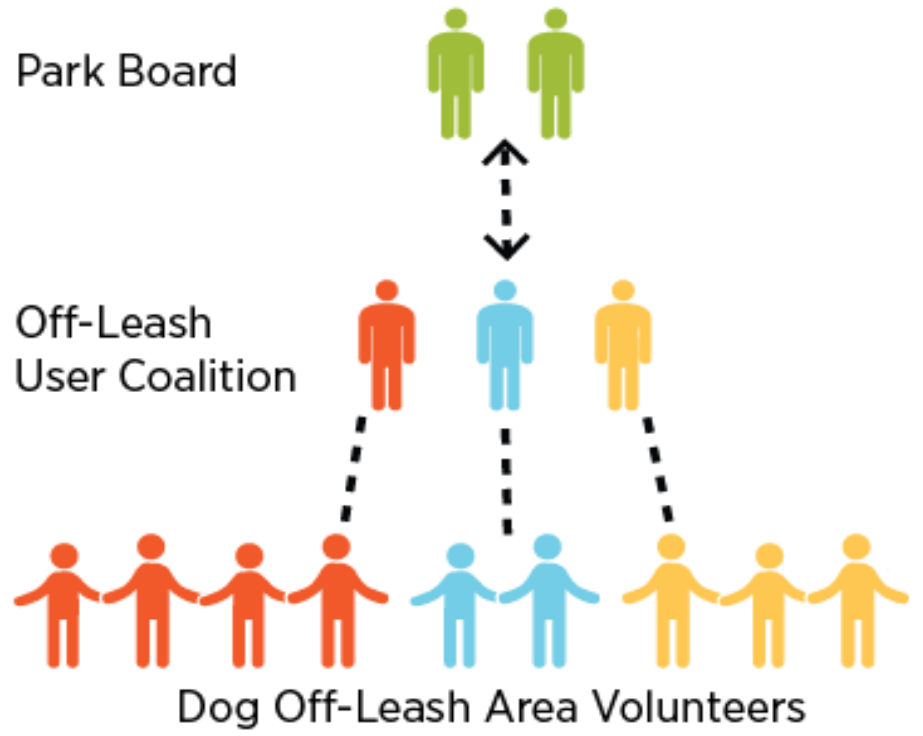






# Formalize resident's role in dog off-leash area stewardship

Peer education was identified as the most important role for volunteers.





# 4. Enforcement



Work with Animal Services to improve dog-related bylaws, and expand bylaw enforcement





## Specific by-law inconsistencies to be addressed

### Parks Control By-law and the Animal Control By-law differences

- maximum leash length
- policies regarding aggressive dogs in parks
- fines

### Lacking powers

- Park Rangers cannot easily ticket for dog owner non-compliance

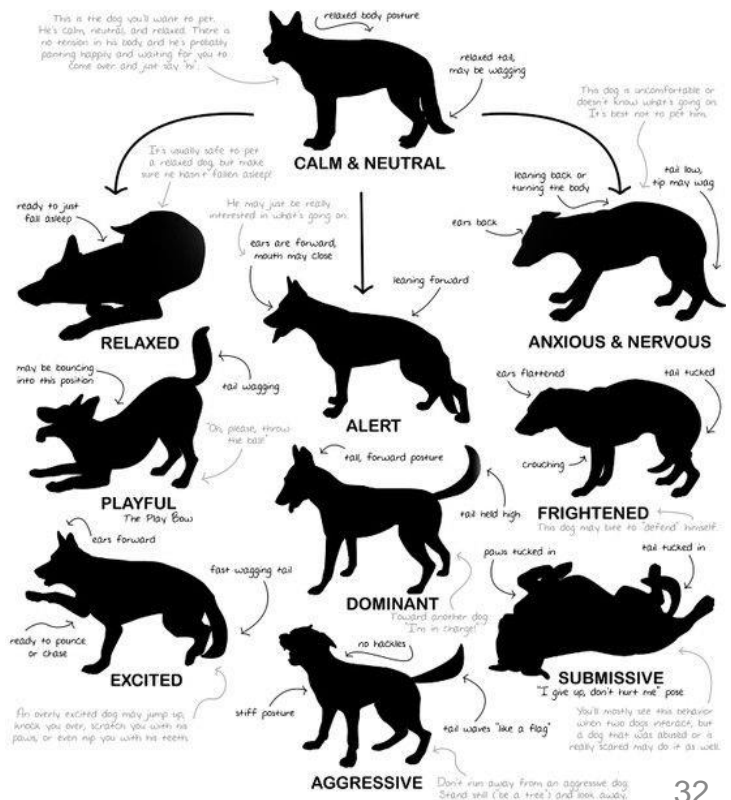


# Educational initiatives

Foster responsible dog ownership and improve understanding of dog behaviour, to promote safety in off-leash areas:

- Educational signage
- Off-leash training courses
- Incentivize dog training
- Education sessions in off-leash areas
- Shared education strategies with the City

## DOG TO ENGLISH TRANSLATION CHART





## Next Steps

- Resolve outstanding consultant recommendations
- Present draft strategy to Park Board fall 2017
- Implementation
  - Short term actions – first 18 months
  - Longer term actions – 18 months and beyond





