



# VanPlay – Playbook Content Development Update

Parks & Recreation Services  
Master Plan

REPORT REFERENCE  
Regular Board Meeting  
November 6, 2017



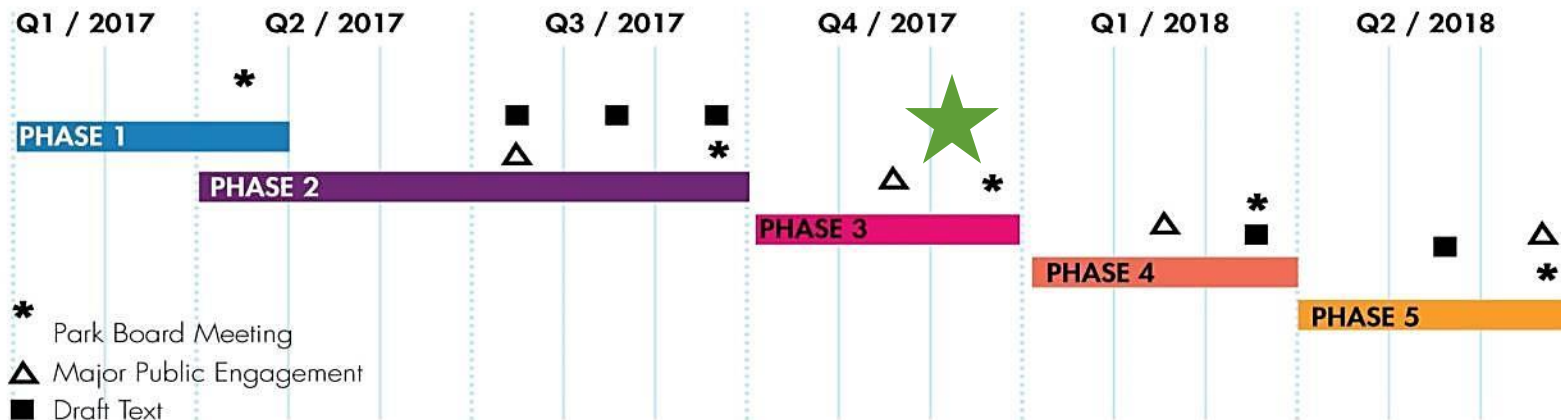
- To provide a high level project update on VanPlay and developing content of the master plan “Playbook”:
  - Inventory and trends
  - Opportunities and vulnerabilities
  - Emerging strategies
  - Next steps





- The Vancouver Board of Parks and Recreation is developing **Vancouver's Playbook**, a new master plan to guide the delivery of vibrant parks and recreation over the next 25 years.
- The VanPlay process informs the Playbook, it includes robust data collection and analysis, research on international best practice and consultation with the public, park board staff, partners, stakeholders and experts.

# schedule



## PHASE 1: PREPARATION & PROJECT MANAGEMENT

- Project Startup
- Community Engagement Preparation
- Identity Development
- Project Management

## PHASE 2: DEVELOPING A CONTEXT OF UNDERSTANDING

- Community Engagement
- Surveys
- Literature Review
- Technical Memos
- Service Evaluations
- Recreation Services Baseline
- Optimal Service Levels
- Gap Analysis
- SOPARC

## PHASE 3: URBAN CORE

- Community Engagement: Urban Core
- Optimal Service Levels Refinement: Urban Core
- Gap Analysis Refinement: Urban Core

## PHASE 4: CITY-WIDE / GROWTH AREAS

- Community Engagement: City-wide & Growth Areas
- Optimal Service Levels Refinement: City-wide & Growth Areas
- Gap Analysis Refinement: City-wide & Growth Areas

## PHASE 5: FINAL REPORT & IMPLEMENTATION PLAN

- Community Engagement: Final Report
- Final Report
- Draft Document
- Refinement & Presentation





# Playbook Structure Overview



# Playbook Structure Overview

## Technical Report (Report 1)

- Robust inventory and analysis of the park system and its service delivery model, including future growth
- evidence-based
- thoroughly investigated

## The Schedule:

- Drafting ongoing throughout VanPlay
- For completion Summer 2018



## Technical Report



## Recommendations & Call-To-Action



# Playbook Report 1 – System Elements

## PARKS



- Local
- Neighbourhood
- Community
- Destination
- Urban Plaza

## RECREATION



- Range of services
- Range of experiences (active & passive Incl. trails, sport, golf, skate, art & culture)

## FACILITIES



- Community Centres
- Pools
- VanDusen
- Bloedel

## NATURE



- Habitat Areas
- Urban Forest
- Beaches
- Green infrastructure

# Inventory & Trends





## Data sources:

- Community engagement
- Expert opinions
- Advisory groups (internal and external)
- Staff interviews and workshops
- Literature review
- Field observation
- GIS and spatial analysis
- Peer city case studies
- Recreation, census & other data
- Capital, operations and maintenance budgets

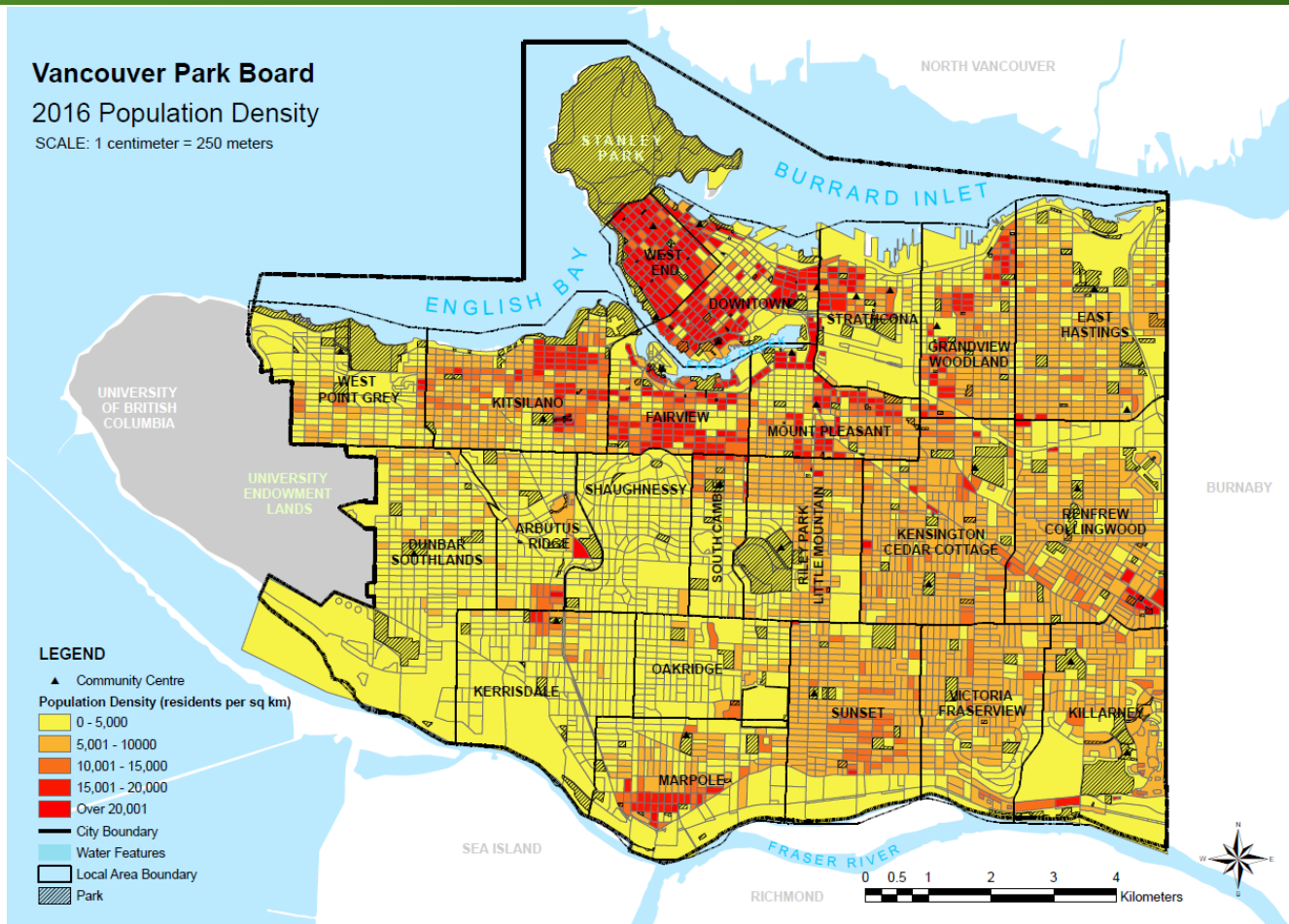


# Playbook Technical Report - Inventory

## Vancouver Park Board

### 2016 Population Density

SCALE: 1 centimeter = 250 meters





POPULATION 25  
YEARS AGO

**471,644**



POPULATION  
TODAY

**631,486**



POPULATION IN  
25 YEARS

**776,500\***

\*indicates estimated population  
SOURCE: Statistics Canada



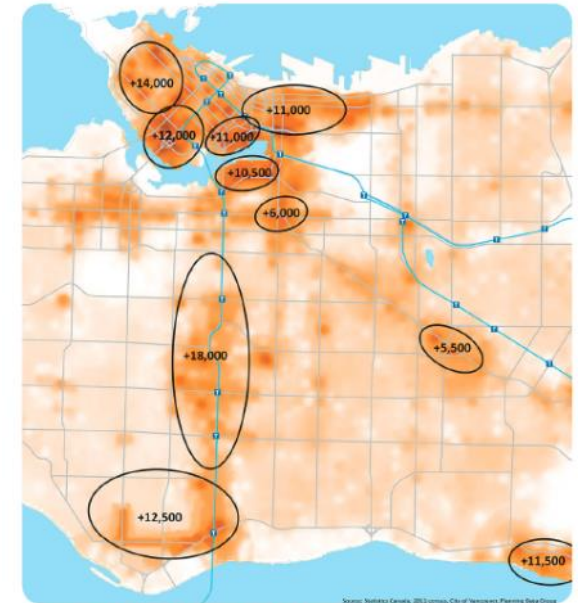
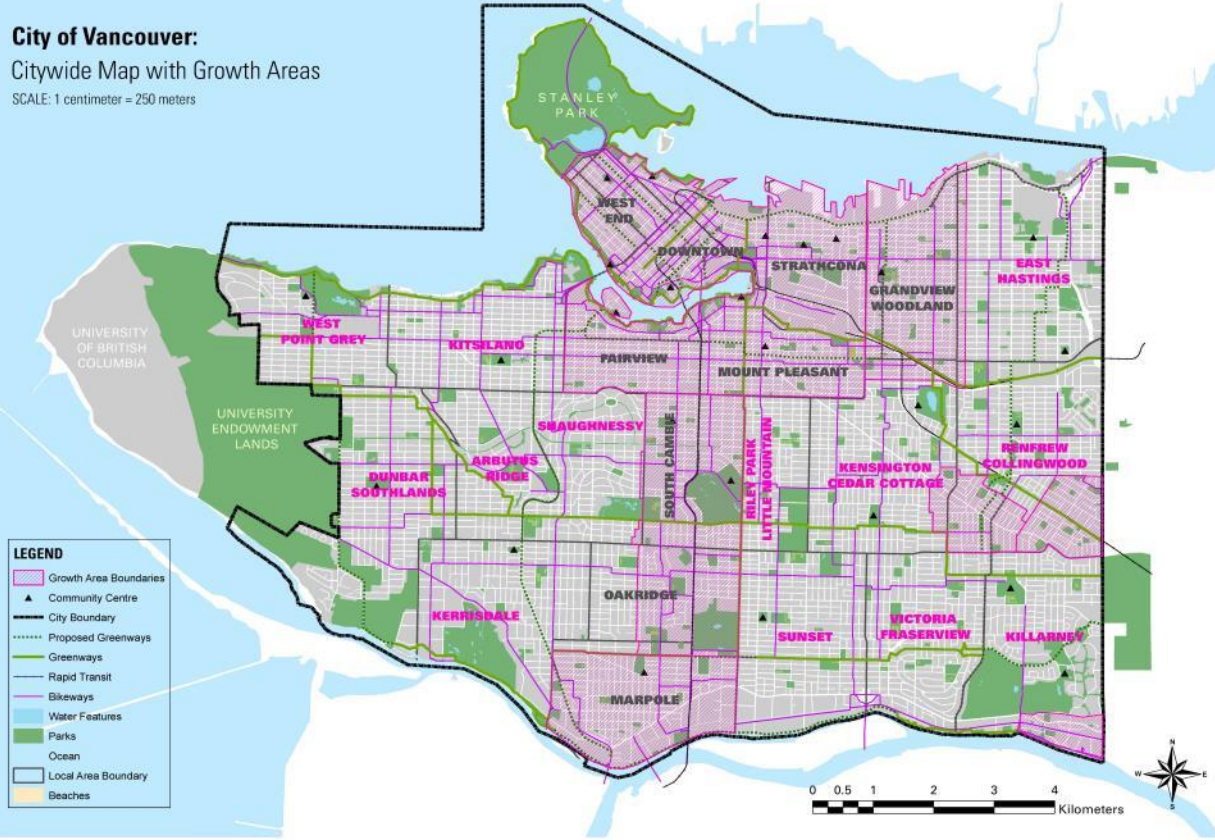
# Playbook Technical Report - Trends

Vancouver is predicted to add **145,000** new residents in the next 25 years.

## City of Vancouver:

### Citywide Map with Growth Areas

SCALE: 1 centimeter = 250 meters



## 2041 POPULATION DENSITY PROJECTIONS

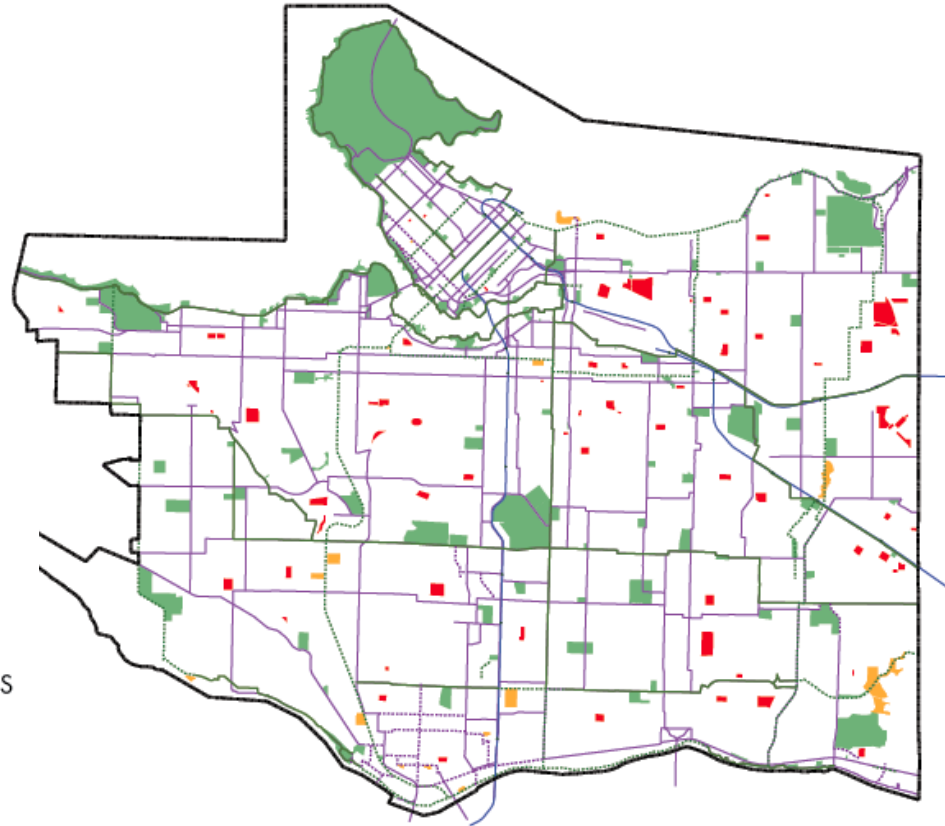
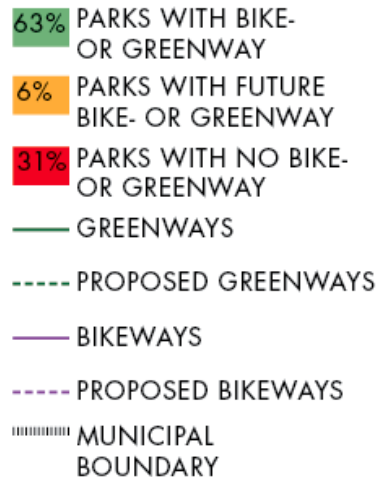
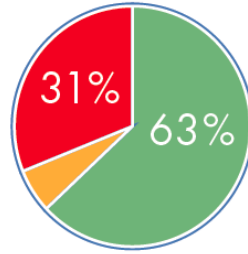
LEGEND  
Population Density  
(Person per Hectare)

500

0

## Connectivity – Accessibility of the system:

**63%** of  
Vancouver's parks  
are fronted by a  
bikeway or  
greenway on at  
least one side.

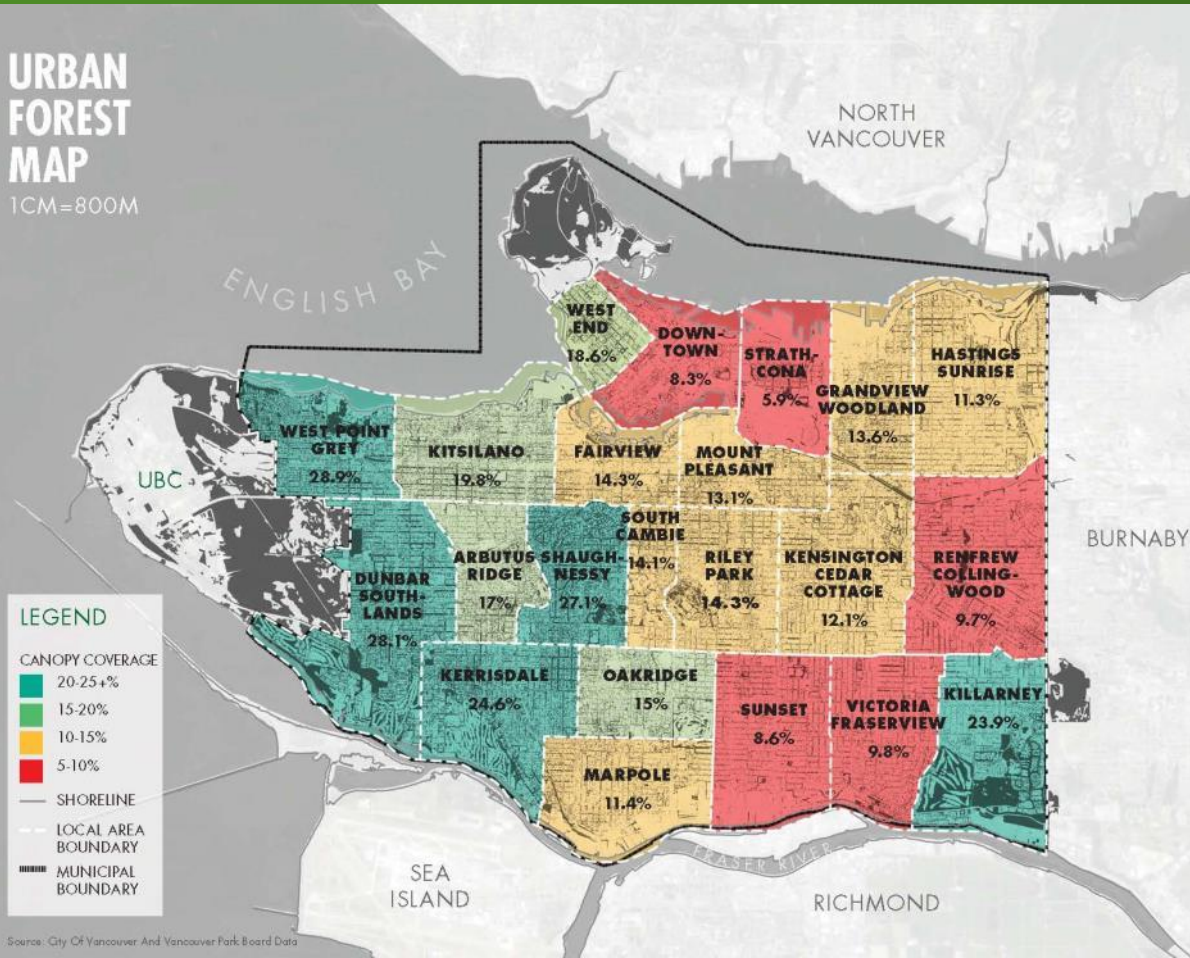


CONNECTIVITY MAP

# Playbook Technical Report - Inventory

## URBAN FOREST MAP

1CM=800M



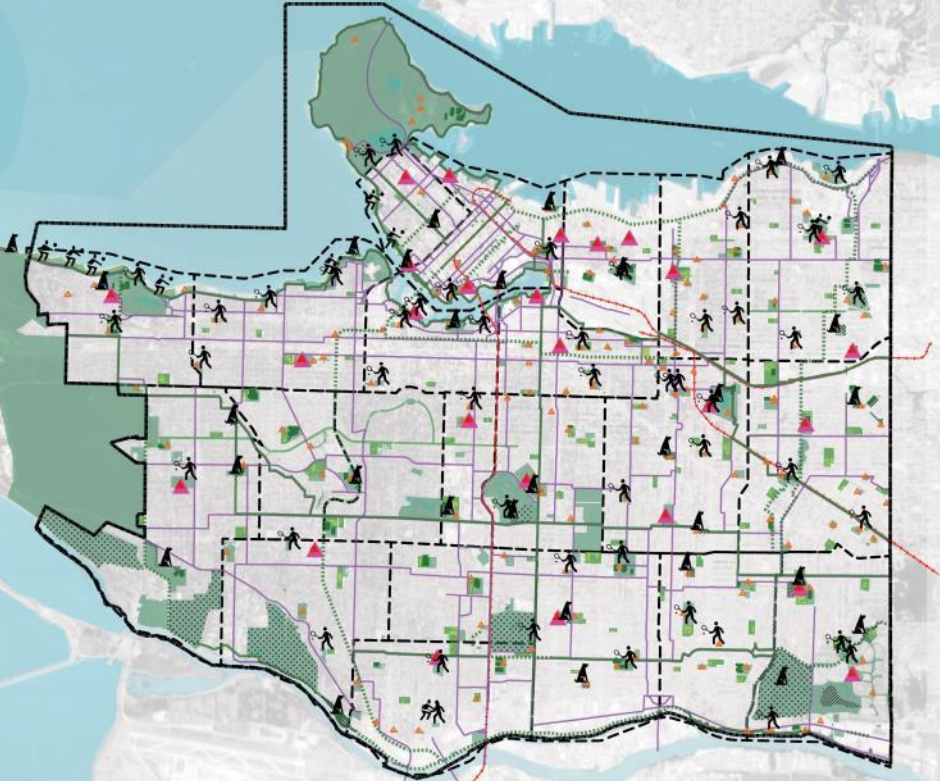
The number of street trees has grown by ~50% in the last 30 years.

Of Vancouver's 22 local areas, **59%** have less than 15% canopy cover.

**90%** of East Vancouver neighbourhoods fall under the threshold of 15% canopy cover.



## RECREATION AMENITIES MAP



## Baseline Metrics & Inventory

- GIS inventory of facilities & amenities underway
- Recreation program matrix underway

For example:

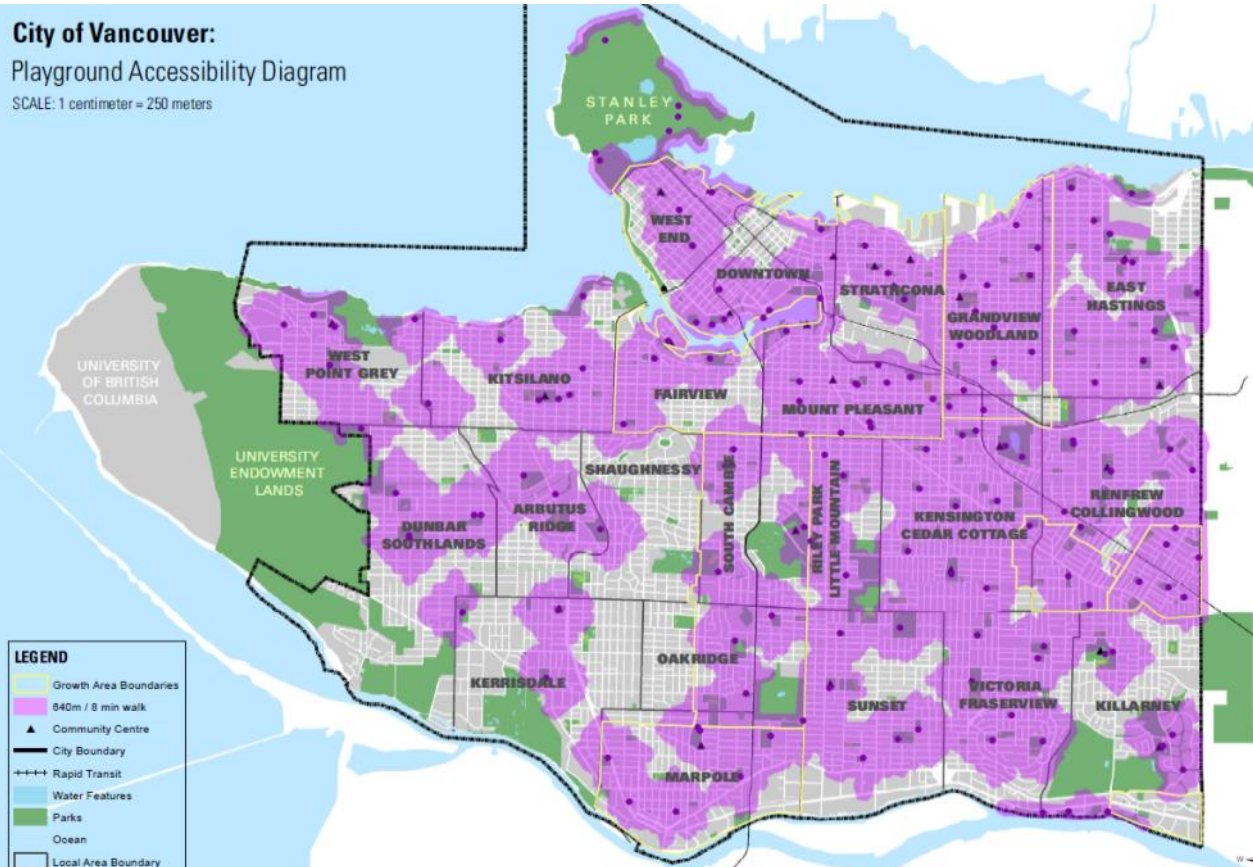
- Playgrounds
- Sports fields (turf, syn, gravel)
- Golf courses
- Baseball diamonds
- Volleyball courts
- Ice rinks
- Skate parks
- Tennis courts
- Community gardens
- Pottery studios
- Performance spaces

# Playbook Technical Report - Inventory

## City of Vancouver:

### Playground Accessibility Diagram

SCALE: 1 centimeter = 250 meters



*For example, this map shows a city-wide view of playgrounds and their 8 minute walk catchments.*

**Vancouver's population is growing but is also changing. VanPlay is considering trends related to recreational demand and accessibility;**

- Park use (passive and active activity): using observation data to identify patterns
- Demographic shifts and their impact on recreation trends: such as, number of seniors, youth inactivity etc.
- Level of satisfaction: from community engagement
- Barriers/challenges: best practice, community engagement & literature review





**Other trends from census data, surveys and reporting.**

*Such as;*

**Aging population:** The population over 65 is estimated to double in the next 25 years.

**An active community:** 70% of Vancouverites are physically active compared to 49% nationwide.

**Ongoing investment:** Since Grace Ceperley donated the first playground in the 1920's, the Park Board has built over 150 outdoor facilities.



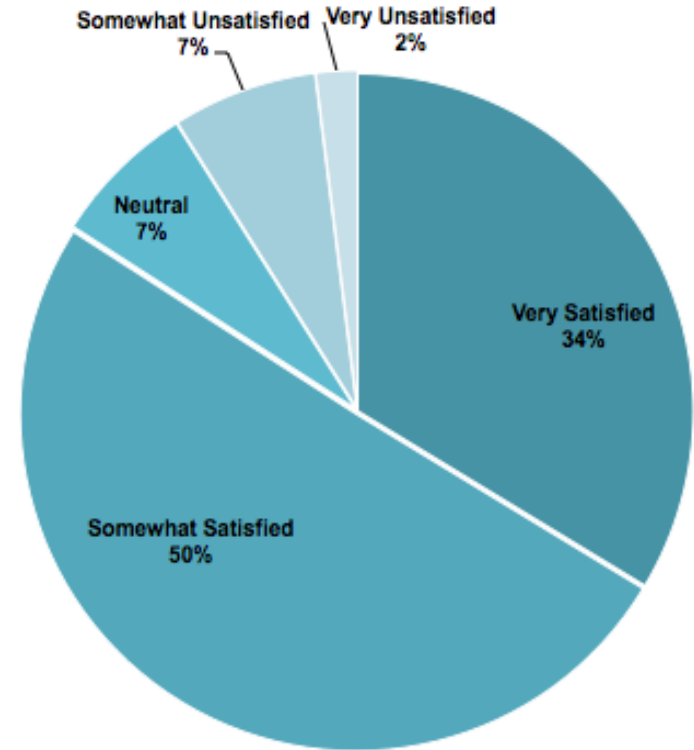


## 2017 VanPlay Survey

**Q: Overall, how satisfied are you with quality of the Vancouver parks and recreation system as a whole?**

**Graph shows:**

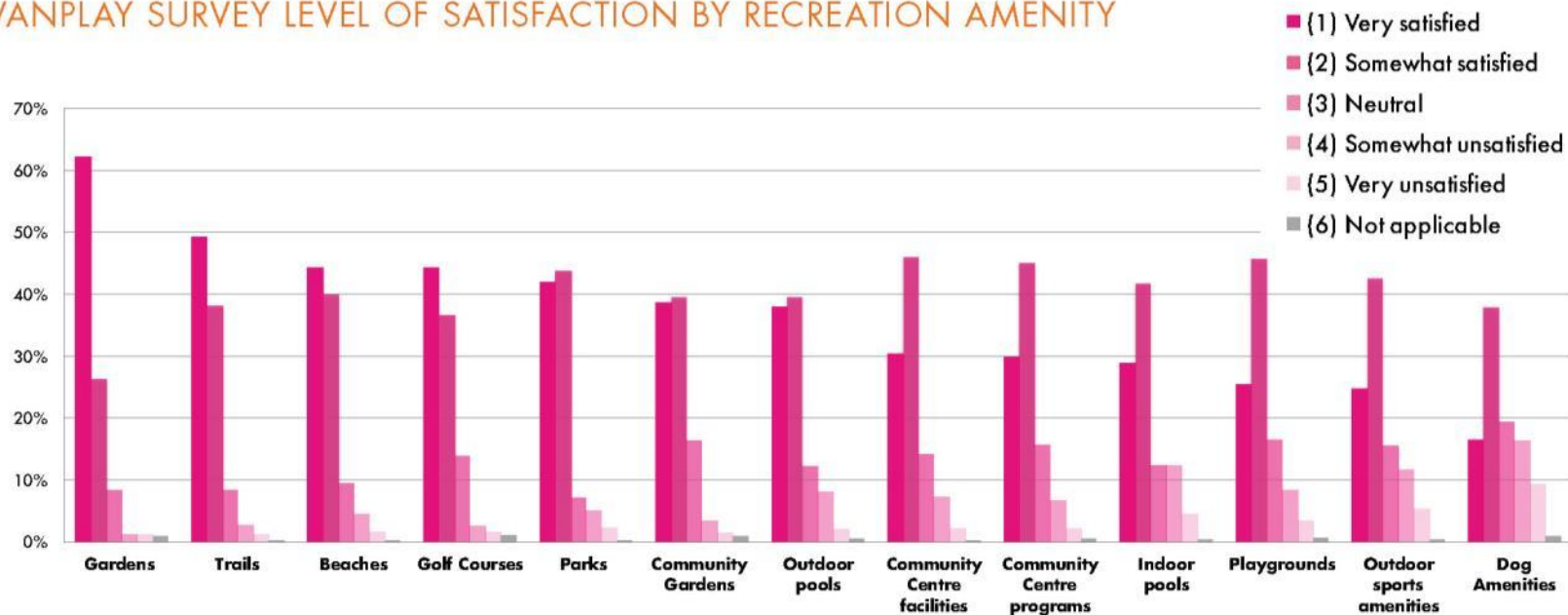
- 84% of respondents are very or somewhat satisfied
- 7% of respondents are neutral
- 9% of respondents are somewhat or very unsatisfied





## 2017 VanPlay Survey

### VANPLAY SURVEY LEVEL OF SATISFACTION BY RECREATION AMENITY



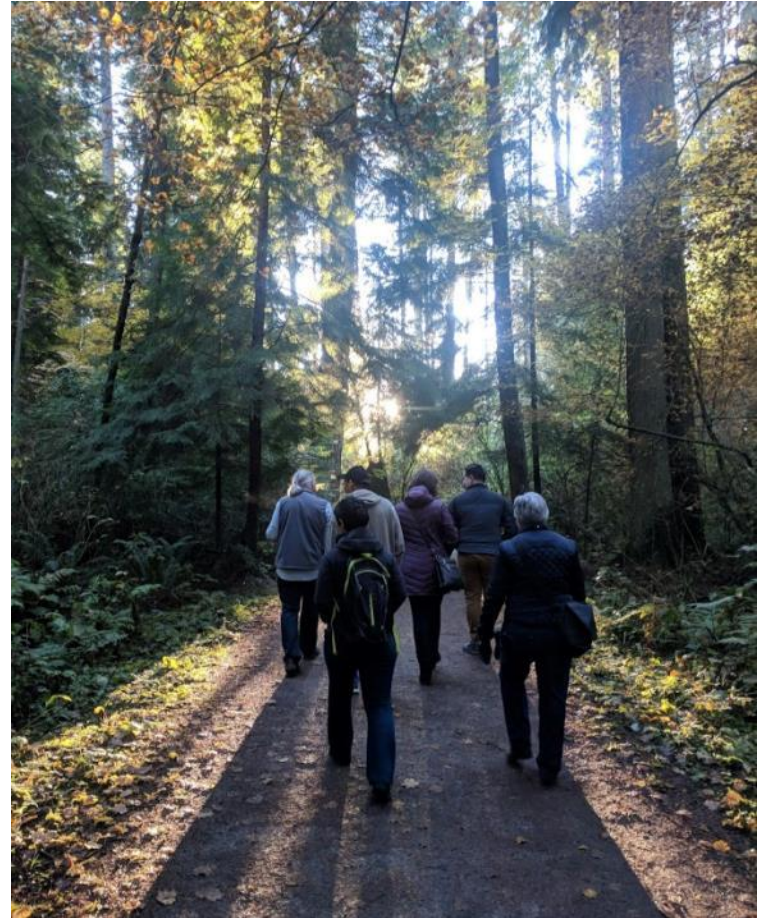




## 2017 VanPlay Survey

MOST COMMONLY CITED  
**OPPORTUNITIES &  
BIG IDEAS:**

- Access to nature and wild spaces
- Adventure and risky play





# Opportunities & Vulnerabilities





Some opportunities and vulnerabilities to the parks and recreation system being considered include:

## Opportunities

- Responsive, welcoming programs and services
- Health and well-being
- Informal, everyday activation
- Community & social resilience
- Connectivity
- Collaboration

## Vulnerabilities

- Lack of equity
- Barriers to access
- Increased demand & changing use
- Climate change
- Stretched resources





## RESPONSIVE, WELCOMING PROGRAMS AND SERVICES



**Whilst 86% of the 2,700 community survey respondents are satisfied with parks today**, the VanPlay process will seek additional input from seniors, youth, families, people with disabilities, First Nations, and low-income populations to help inform the understanding of needs, to work towards more welcoming and responsive parks and recreation.

*For example:*

Equity and access can mean being nimble and responsive to community needs such as providing more **flexible, multipurpose spaces** that can be programmed to meet changing community needs.

# Vulnerability

*For example:*

- There is a growing economic divide in Vancouver and **much of the population is struggling to meet their basic needs**. Free or reduced cost programming can only go so far—lack of time and energy are related barriers.
- **Accessibility** to many recreation opportunities is limited for persons with disabilities and can be better integrated into all parks and facilities.
- Language barriers prevent new Vancouverites from accessing recreation. Wayfinding signage, programming and materials in **languages other than English** can assist.

## BARRIERS TO ACCESS



# Opportunity

**47% of the community survey respondents listed health and well-being as a top priority for parks and recreation.**

The observation data study of over 18,000 park users revealed 59% participated in sedentary activity (sitting, standing, resting) in parks, while 41% were observed in moderate to vigorous activity (running, playing, sports).

*For example:*

- Adequate space for **both sedentary and vigorous activities**.
- Park spaces designed to encourage physical activity by all age groups.
- A continued focus on **physical literacy**, to provide quality, accessible, basics for everyone.

## HEALTH & WELL-BEING





# Vulnerability

Experts predict that climate change will bring increased drought and flooding to Vancouver, hotter summers, reduced water availability, sea level rise of up to 1 meter by 2100 and reduction of the tree canopy.

*For example:*

- Populations with income, mobility and health vulnerabilities will rely more on recreation services.
- Rising temperatures will **increase operations & maintenance costs** for facilities, such as for invasive species control (e.g., chaffer beetle effecting playing fields)

## CLIMATE CHANGE



# Opportunity

## COMMUNITY & SOCIAL RESILIENCE



While the community faces pressures from economic development, rising social inequality and population density, **parks and recreation can strengthen community resiliency.**

*For example:*

- Park Board lands currently support nearly 1,000 community garden plots, 725 fruit and nut trees & 4 pollinator gardens.  
**Food assets support Vancouver's resiliency,** health and connection to nature.
- Community Centers as social hubs, and disaster hubs for refuge in case of an emergency.

# Emerging Strategies



# IDENTIFYING THE DEFICIT



## SO WHAT DO WE DO?

To test with the community and stakeholders, we are exploring **many strategies** to accommodate the future population growth whilst maintaining our current level of service.

We keep up,  
by acquiring  
more  
parkland.

We leverage  
the “green  
network” for  
recreation.

Our parks  
are more  
resilient to  
increased  
demand.

We explore  
creative ways  
to provide  
park space

## IDENTIFYING THE DEFICIT

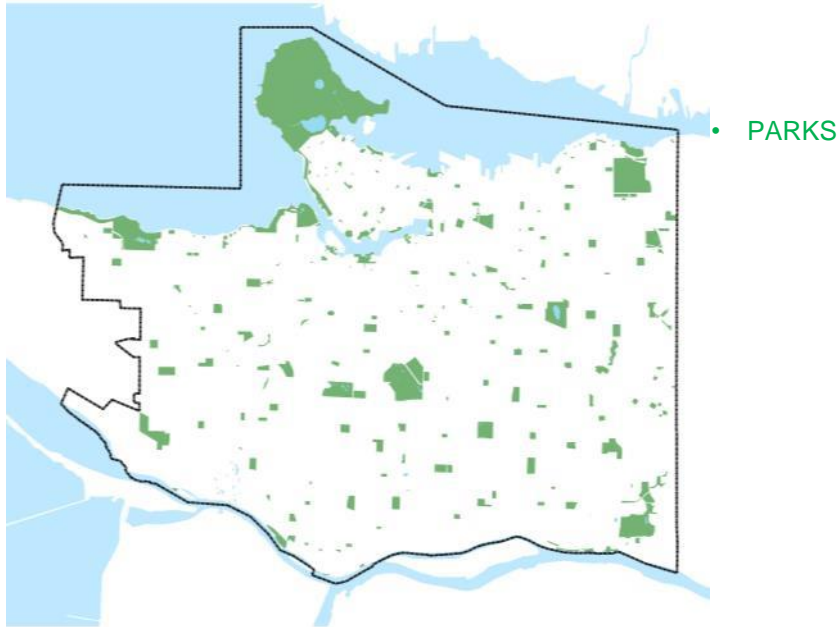
To maintain Vancouver's current level of service (or parkland per person), the City would need to acquire **291 hectares** of parkland over the next 25 years.

This is equivalent to **5 parks the same size as Queen Elizabeth Park**, or more than 10 the same size as John Hendry Park.

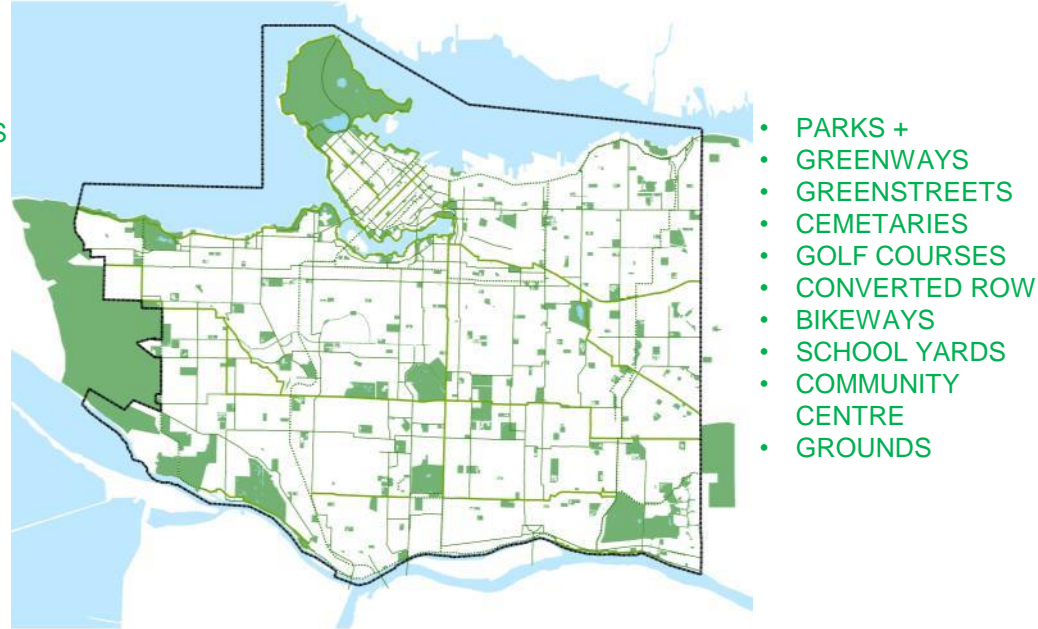




## PARK NETWORK



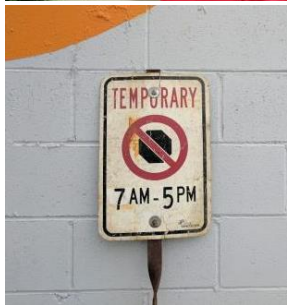
## GREEN NETWORK



Parks, when isolated, comprise only 11% of the landmass in Vancouver. By **collaborating with City departments and incorporating greenspaces** and greenways, Vancouver could have a more robust, navigable and resilient network. 33

# Emerging Strategies

**Temporary and pop-up parks** allow the Park Board to make the best of short-term opportunities to provide valuable recreation space.



## PARKS ARE MORE RESILIENT TO INTENSIFYING USE

Without additional recreation space, parks will be increasingly under stress.

We can **adapt our existing parks** so they “work harder” and cope with stress by;

- being more resilient to intensifying use, and
- servicing increased patronage.

This can be achieved through design and operating models that ensure programming and maintenance suits year round needs.







## Next Steps

# Next Steps

November Community  
Dialogue Workshop



Late-Winter 2018  
Community Dialogue Workshop



May/June Community  
Dialogue Workshop\*to be confirmed



OPPORTUNITIES & VULNERABILITIES

STRATEGIES

FINANCE

BIG CONCEPT

SERVICE RATIOS

ORG. CAPACITY

IMPLEM  
ENTATION

END

Review with  
Staff & Advisory  
Groups

*Park Board Report  
Reference (Spring 2018)*

Review with  
Staff & Advisory  
Groups

*Park Board Decision  
(Summer 2018)*

# Upcoming Consultation



## Community Dialogues

These evenings are for our stakeholders and the public to share their views on the future of parks & recreation with Park Board Commissioners and staff.

These workshop style events will delve into potential strategies and opportunities which will help form the Playbook content.

**November 29, 2018**

Downtown focused  
Roundhouse CC

**February 2018**

Citywide &  
growth areas focused





# Upcoming Consultation



## Community Centre Association Workshop

6.30pm – 8<sup>th</sup> November 2017  
Creekside Community Centre

## Deep Dive Workbooks

Workbook guided, self directed conversations for groups of stakeholders, community groups, committees, subject matter experts etc.

*Invitations to commence in  
December.*



