

SHARED PROGRAM
 RESIDENTIAL



NORTH

PARKING LEVELS 2 + 3

BUSBY + ASSOCIATES ARCHITECTS

1220 HOMER STREET
 VANCOUVER
 BRITISH COLUMBIA
 CANADA V6B 2Y5

T: 604.684.5446
 F: 604.684.5447

Mt. Pleasant Civic Centre 1 KINGSWAY

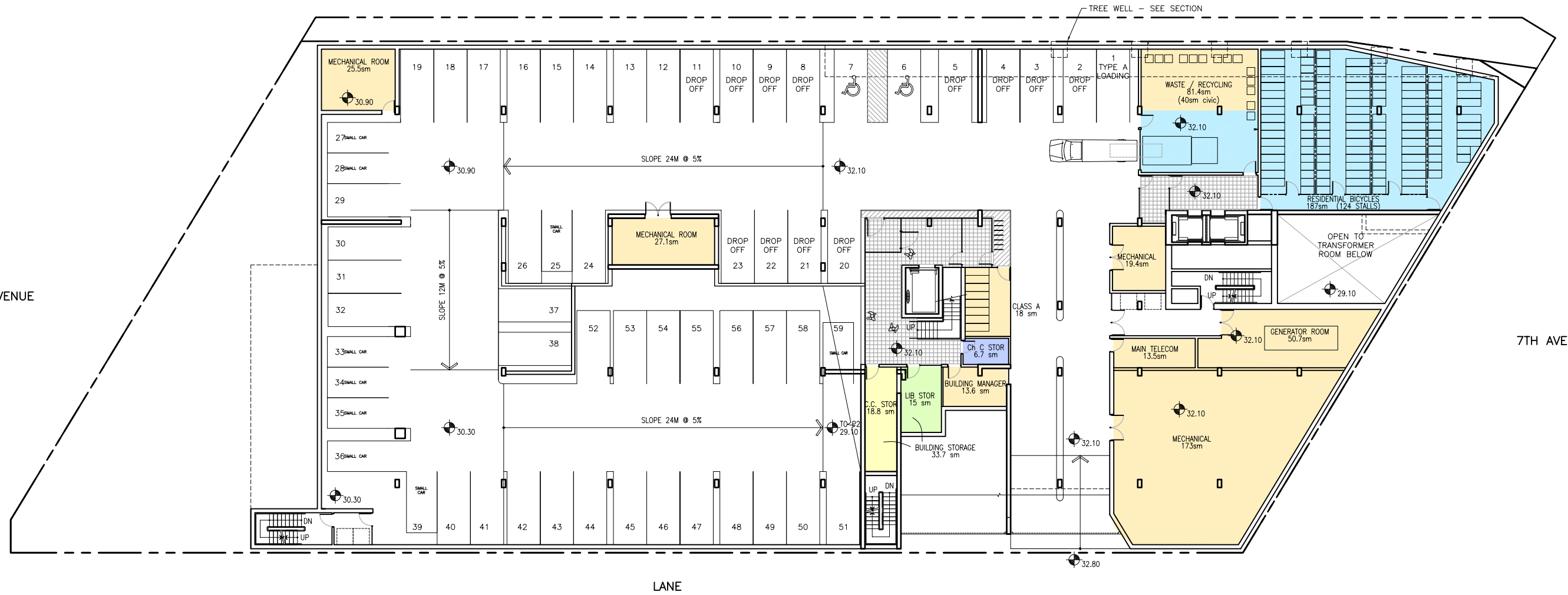
SCALE: 1:200

KINGSWAY

8TH AVENUE

7TH AVENUE

LANE



- SHARED PROGRAM
- COMMUNITY CENTRE
- RESIDENTIAL
- LIBRARY
- CHILD CARE



NORTH

PARKING LEVEL 1

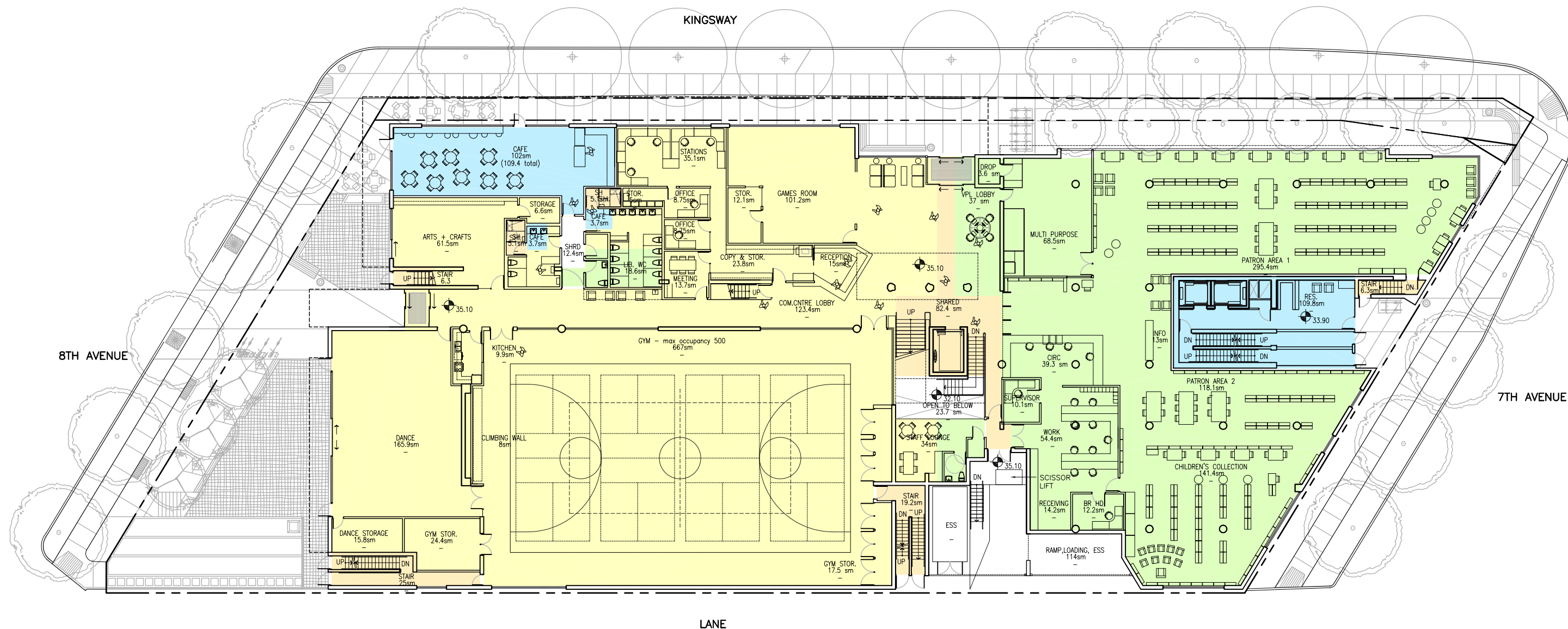
BUSBY + ASSOCIATES ARCHITECTS

Mt. Pleasant Civic Centre 1 KINGSWAY

1220 HOMER STREET
VANCOUVER
BRITISH COLUMBIA
CANADA V6B 2Y5

SCALE: 1:150

T: 604.684.5446
F: 604.684.5447



- SHARED PROGRAM
- COMMUNITY CENTRE
- RESIDENTIAL
- LIBRARY
- CHILD CARE



NORTH

GROUND FLOOR

BUSBY + ASSOCIATES ARCHITECTS

Mt. Pleasant Civic Centre 1 KINGSWAY

1220 HOMER STREET
VANCOUVER
BRITISH COLUMBIA
CANADA V6B 2Y5

SCALE: 1:150

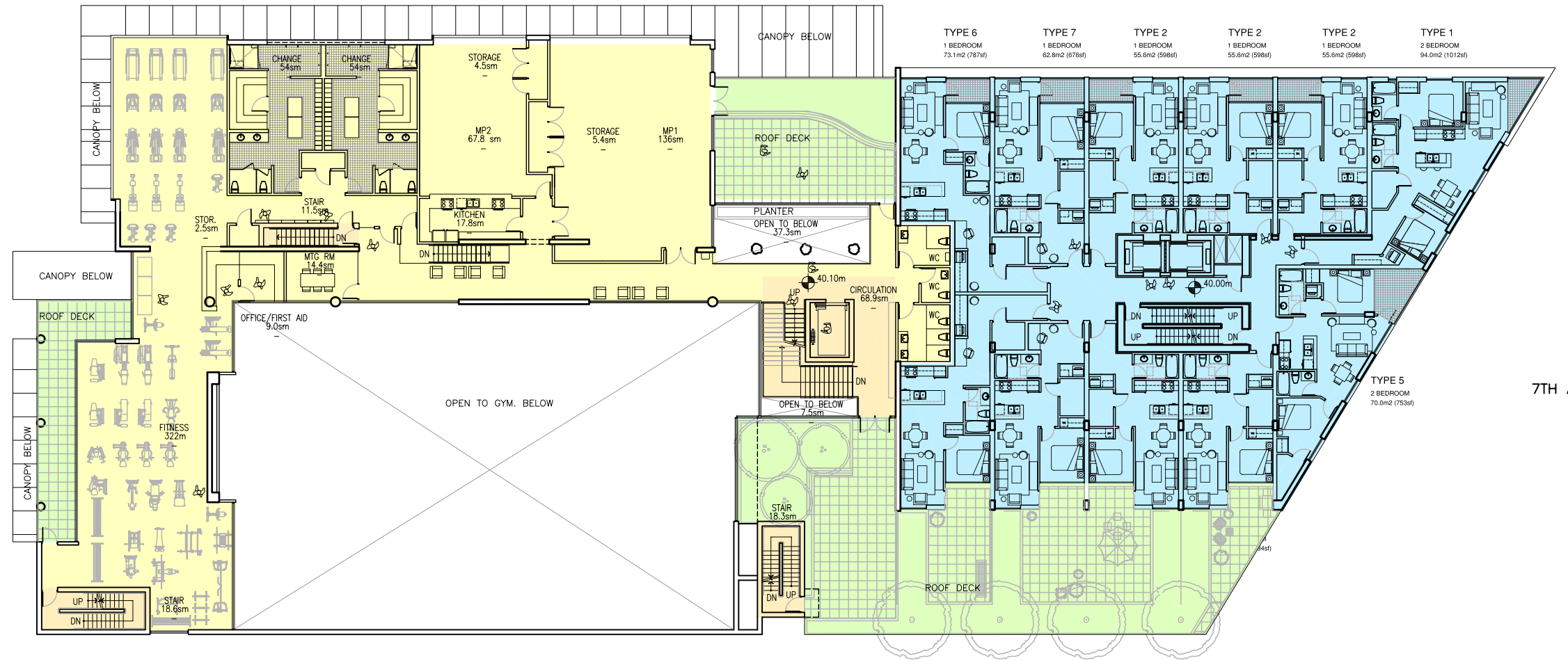
T: 604.684.5446
F: 604.684.5447

KINGSWAY

8TH AVENUE

7TH AVENUE

LANE



- SHARED PROGRAM
- COMMUNITY CENTRE
- RESIDENTIAL
- EXTERIOR SPACE
- CHILD CARE



LEVEL 2

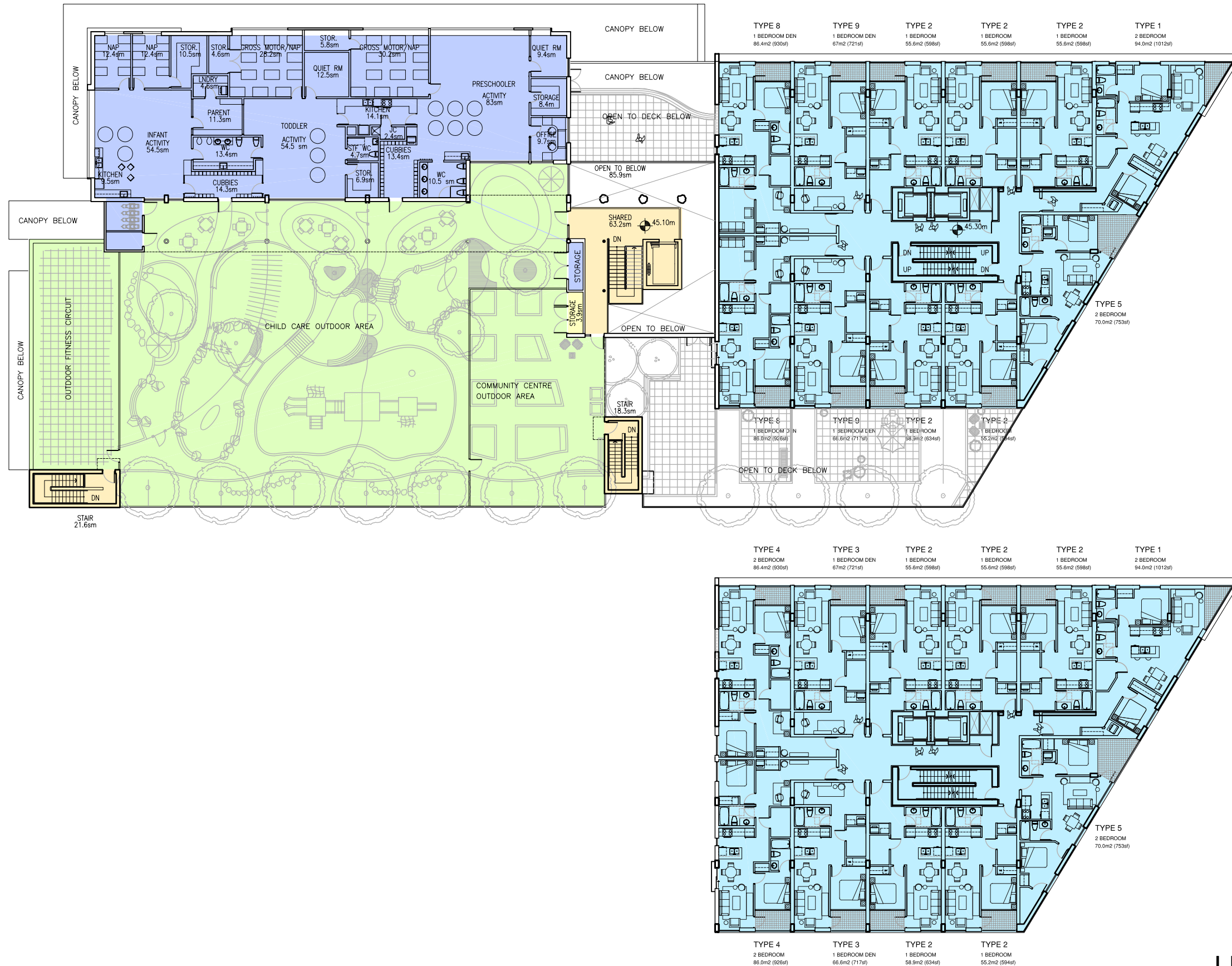
BUSBY + ASSOCIATES ARCHITECTS

Mt. Pleasant Civic Centre 1 KINGSWAY

1220 HOMER STREET
VANCOUVER
BRITISH COLUMBIA
CANADA V6B 2Y5

SCALE: 1:150

T: 604.684.5446
F: 604.684.5447



- SHARED PROGRAM
- COMMUNITY CENTRE
- RESIDENTIAL
- EXTERIOR SPACE
- CHILD CARE



NORTH

LEVEL 3 & 4-10

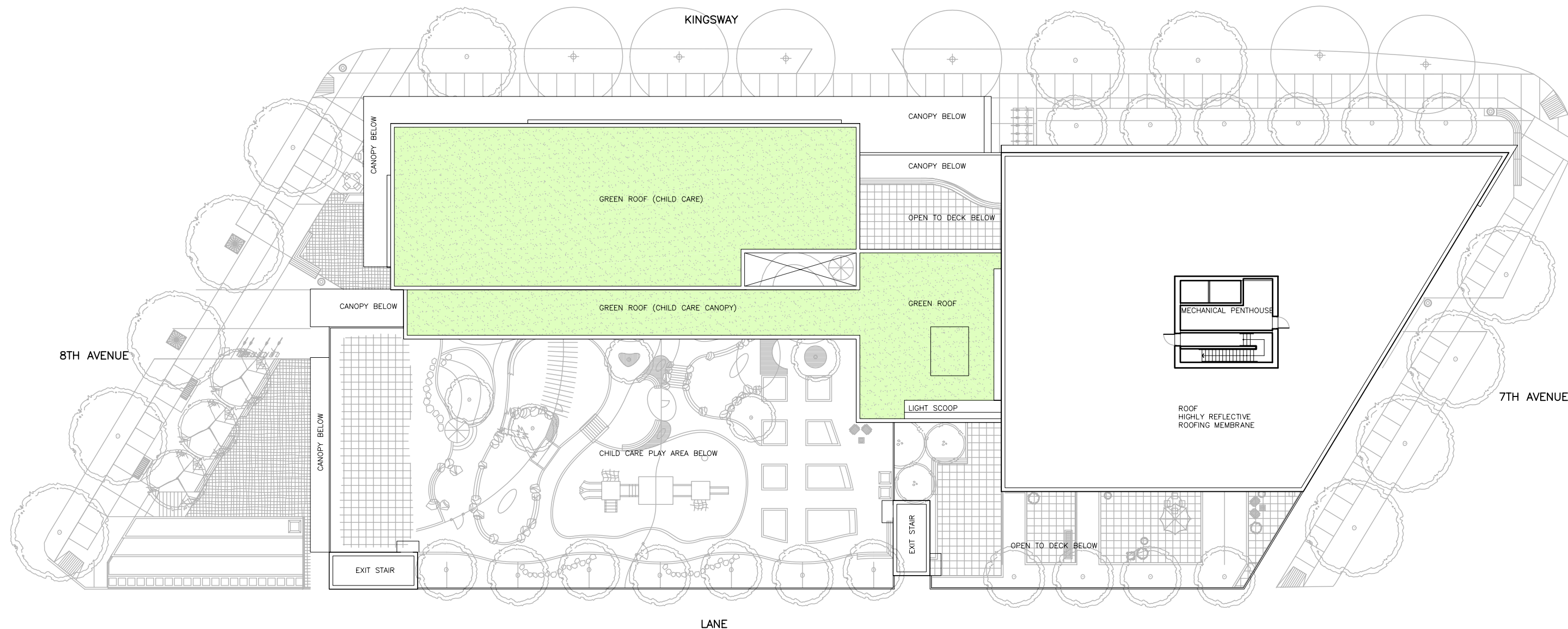
BUSBY + ASSOCIATES ARCHITECTS

Mt. Pleasant Civic Centre 1 KINGSWAY

1220 HOMER STREET
VANCOUVER
BRITISH COLUMBIA
CANADA V6B 2Y5

SCALE: 1:150

T: 604.684.5446
F: 604.684.5447



NORTH

ROOF PLAN

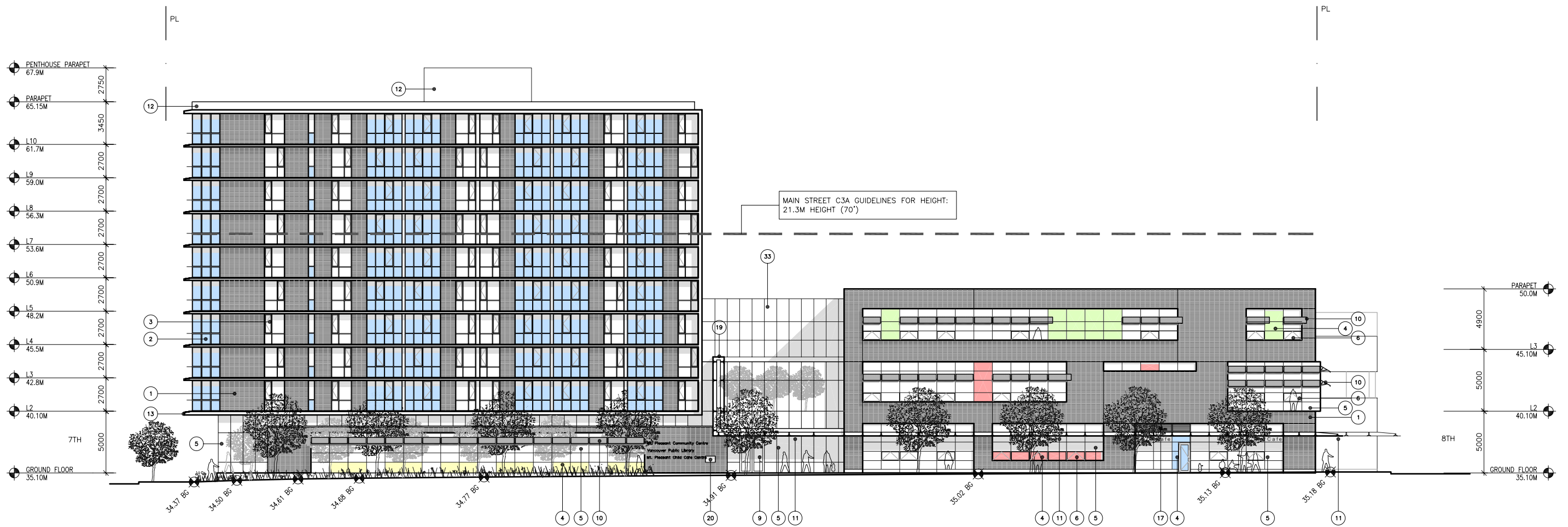
BUSBY + ASSOCIATES ARCHITECTS

1220 HOMER STREET
VANCOUVER
BRITISH COLUMBIA
CANADA V6B 2Y5

T: 604.684.5446
F: 604.684.5447

Mt. Pleasant Civic Centre 1 KINGSWAY

SCALE: 1:150



MATERIAL LEGEND:

- | | | |
|--|--|--|
| 1 90mm x 390mm STACK BOND CONCRETE BRICK (HIGH FLASH WITH COLOUR PIGMENTATION) | 12 SANDBLASTED ARCH. CONCRETE WITH ANTI GRAFFITI COATING / SEALER | 23 STRUCTURAL WOOD COLUMNS WITH CAST ALUM. FIXINGS TO CONC. STRUCTURE |
| 2 ENCLOSED BALCONY WITH TINTED LOW E GLASS SET IN ALUM. WINDOW WALL SYSTEM | 13 TAPERED CONCRETE SLAB EDGE WITH CLEAR LIQUID APPLIED MEMBRANE | 24 PERFORATED WOOD CEILING PANEL |
| 3 VISION GLASS - LOW E COATING SET IN ALUM. WINDOW WALL SYSTEM (RESIDENTIAL) | 14 PAINTED STEEL FENCE - VERTICAL CIRCULAR PICKETS CANT'D FROM STEEL TUBE BASE | 25 PAINTED STEEL COLUMN AND SUPPORTING STEEL STRUCTURE |
| 4 BACK PAINTED SPANDREL GLASS (WINDOW WALL AND CURTAIN WALL) | 15 POWDER COATED ALUMINUM GUARDRAIL (VERTICAL PICKETS) | 26 LAMINATED GLASS SKYLIGHT IN ALUM. FRAME |
| 5 VISION GLASS - LOW E COATING SET IN 2 WAY BUTT GLAZED ALUM. CURTAIN WALL SYSTEM | 16 SEGMENTED ALUMINUM OVERHEAD DOOR | 27 12MM TEMPERED GLASS SET IN ALUM. FRAME (2 WAY BUTT GLAZED) |
| 6 OPERABLE WINDOW IN ALUM. FRAME | 17 ANODIZED ALUMINUM MECHANICAL LOUVRE | 28 WIRED GLASS IN PRESSED STEEL FRAME |
| 7 GLASS DOOR IN ALUM. FRAME | 18 SIAMESE CONNECTION, WATER METER AND FIRE DEPARTMENT LOCK BOX | 29 GLASS AND STEEL GUARDRAIL WITH CAST ALUM. FIXINGS |
| 8 SLIDING GLASS DOOR IN ALUM. FRAME | 19 GLASS AND STEEL MARQUEE WITH ILLUMINATED LETTERING | 30 INTERIOR PLANTER (SEE LANDSCAPE) |
| 9 AUTOMATED SLIDING GLASS ENTRY DOORS | 20 STAINLESS STEEL BOOK DROP DOOR | 31 LIGHT WEIGHT GREEN ROOFING SYSTEM |
| 10 PERIF. ALUM. SHADE w/ CAST ALUM. SUPPORTS (INTERNAL LIGHT SHELF AT THESE LOCATIONS) | 21 PAINTED STEEL DOOR | 32 HIGHLY REFLECTIVE ROOFING MEMBRANE |
| 11 GLASS AND STEEL CANOPY - 600mm STRIP OF FRITTED GLASS FOR SOLAR PROTECTION | 22 GLASS GUARD RAIL | 33 VISION GLASS - FRITTED GLASS SET IN 2 WAY BUTT GLAZED ALUM. CURTAIN WALL SYSTEM |

KINGSWAY ELEVATION

BUSBY + ASSOCIATES ARCHITECTS

1220 HOMER STREET
VANCOUVER
BRITISH COLUMBIA
CANADA V6B 2Y5

T: 604.684.5446
F: 604.684.5447

Mt. Pleasant Civic Centre 1 KINGSWAY

SCALE: 1:150