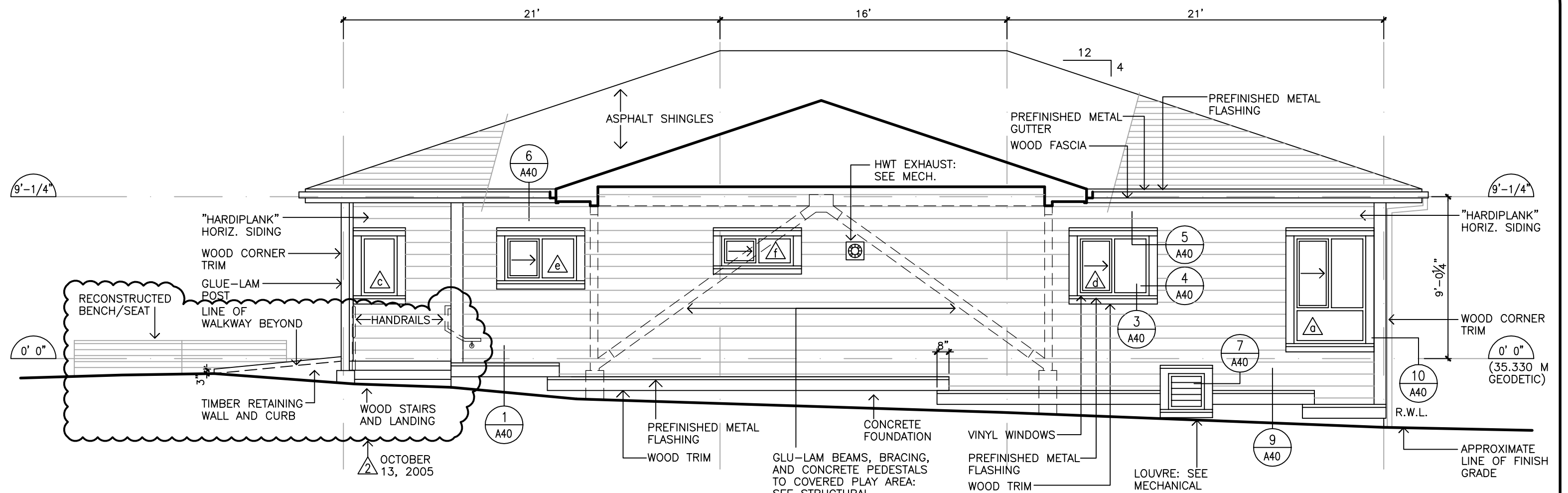


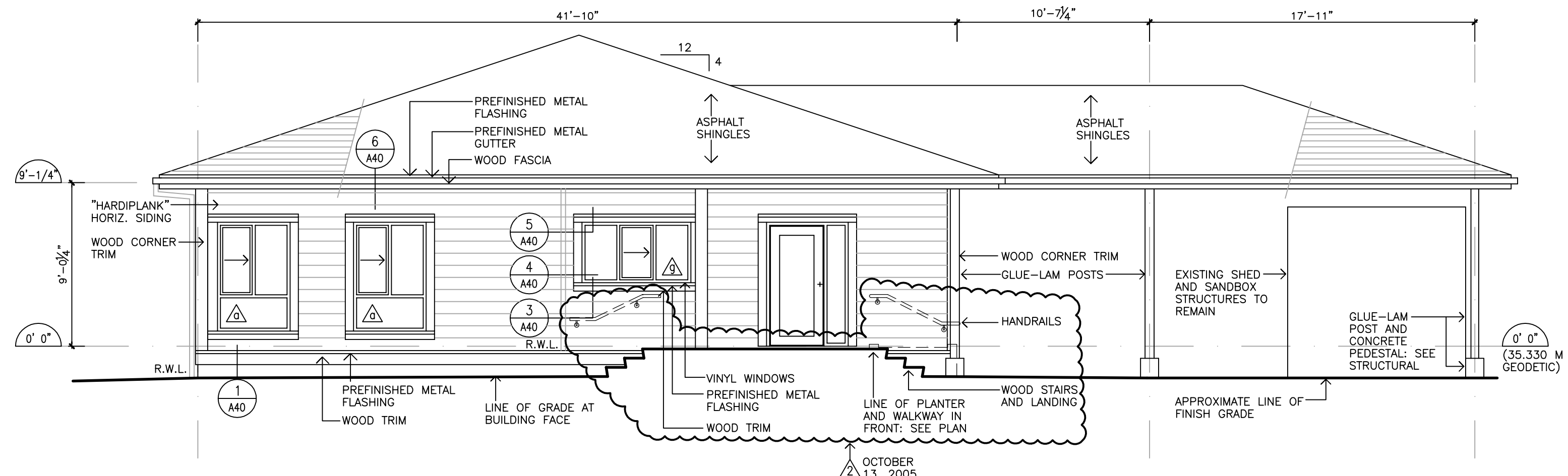
WEST ELEVATION

REVISIONS: FEBRUARY 17, 2005
SCALE: 3/16" = 1'-0"
AREA OF EXPOSING BUILDING FACE: 620.11 SQ. FT. (57.6 M2)
AREA OF UNPROTECTED OPENINGS: 137.44 SQ. FT. (12.8 M2)



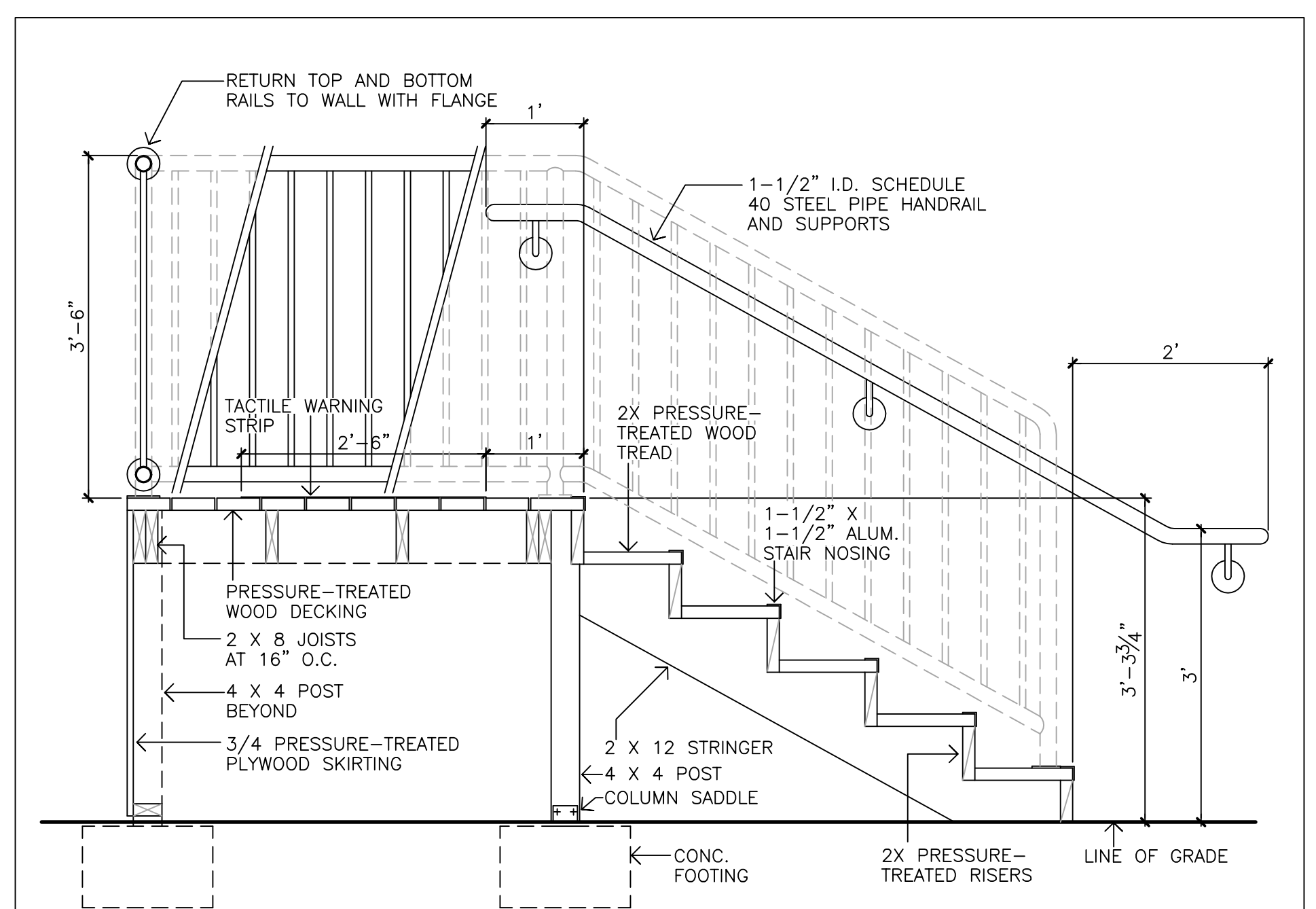
EAST ELEVATION

REVISIONS: FEBRUARY 17, 2005
SCALE: 3/16" = 1'-0"
AREA OF EXPOSING BUILDING FACE: 598.55 SQ. FT. (55.6 M2)
AREA OF UNPROTECTED OPENINGS: 68.86 SQ. FT. (6.4 M2)

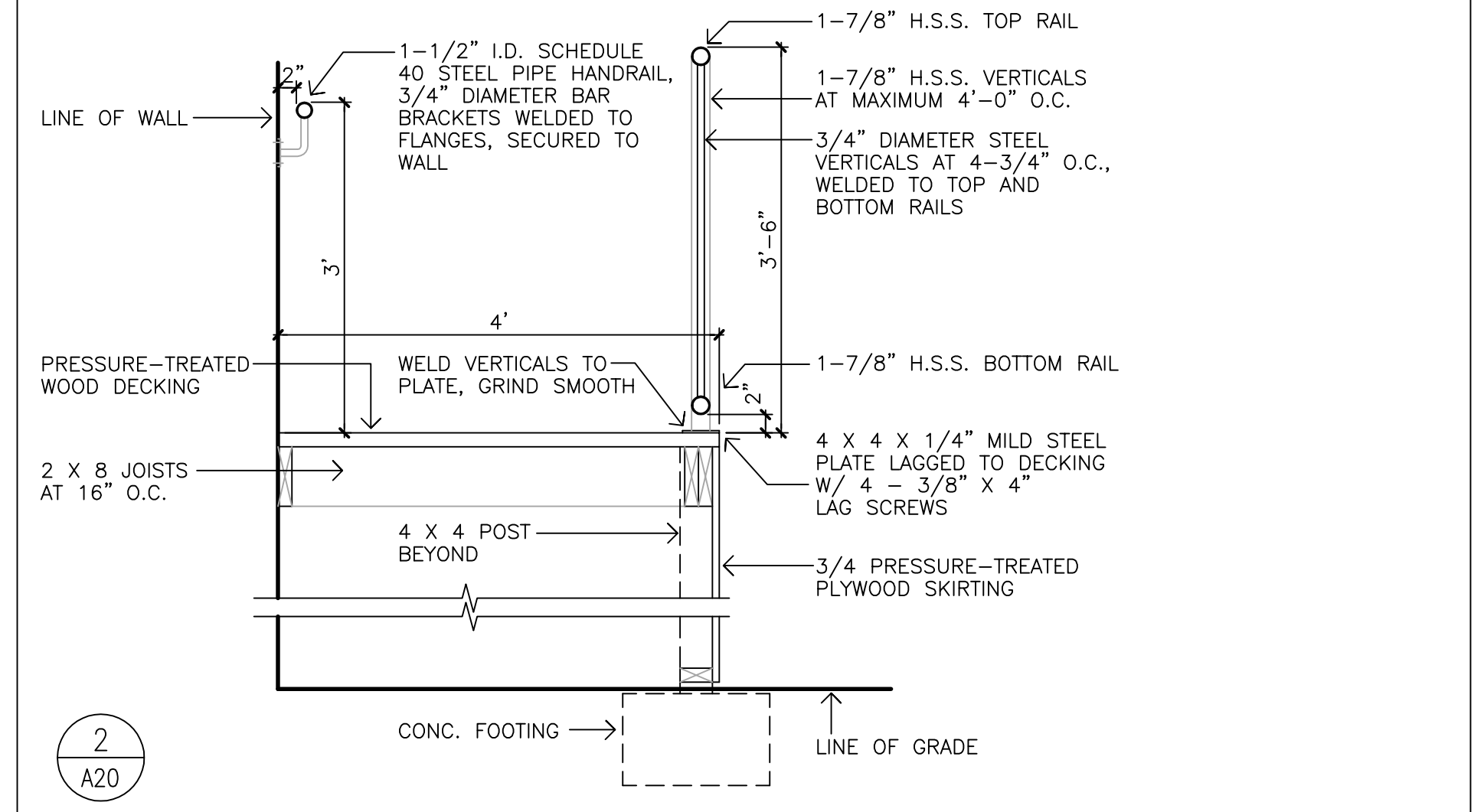


SOUTH ELEVATION

REVISIONS: FEBRUARY 17, 2005
SCALE: 3/16" = 1'-0"
AREA OF EXPOSING BUILDING FACE: 370.42 SQ. FT. (34.4 M2)
AREA OF UNPROTECTED OPENINGS: 78.2 SQ. FT. (7.3 M2)

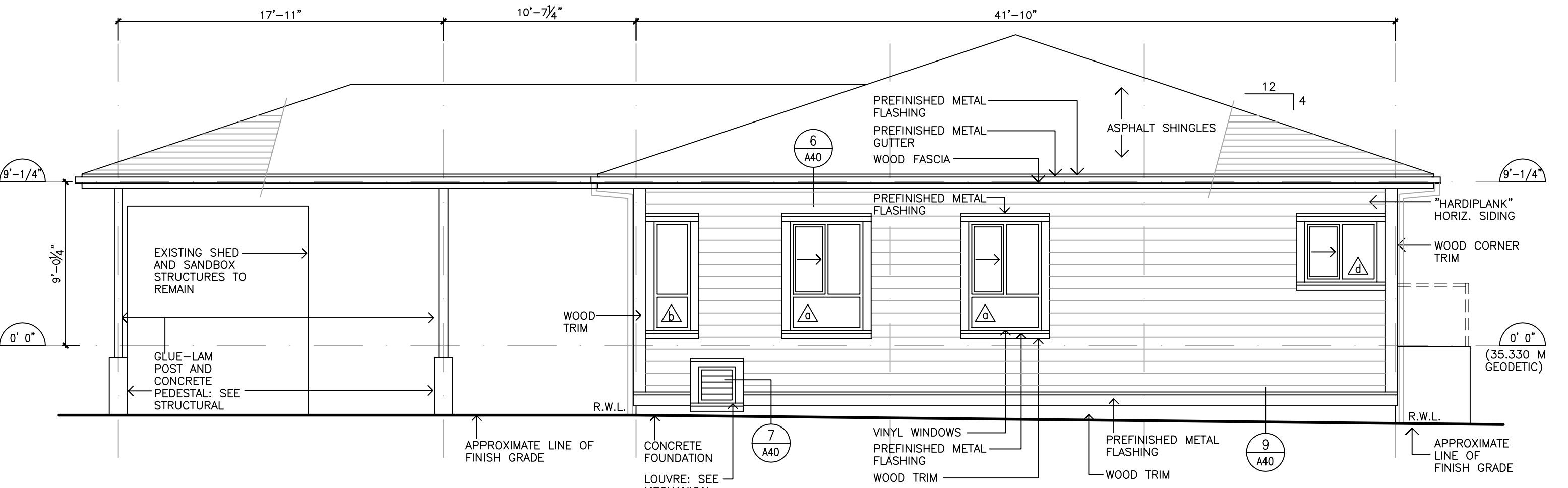
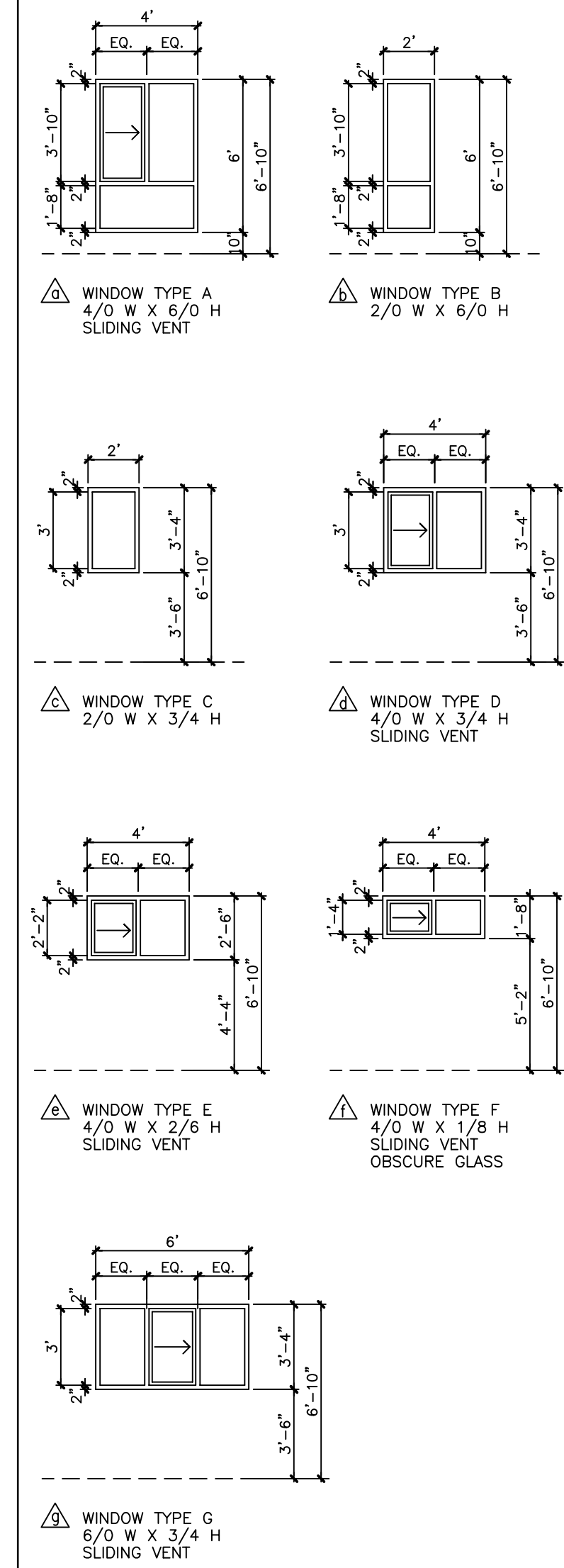


1 A20
TOTAL RISE 39-3/4" [1010 MM]
6 RISERS AT 6-5/8" [168.3 MM]
5 TREADS AT 12" [305 MM]



2 A20
REVISIONS: FEBRUARY 17, 2005

VINYL WINDOWS



NORTH ELEVATION

REVISIONS: FEBRUARY 17, 2005
SCALE: 3/16" = 1'-0"
AREA OF EXPOSING BUILDING FACE: 487.13 SQ. FT. (45.3 M2)
AREA OF UNPROTECTED OPENINGS: 73.33 SQ. FT. (6.8 M2)