

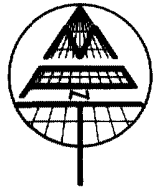
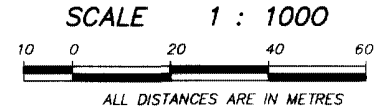
STATUTORY RIGHT OF WAY PLAN OVER PART OF LOT 6 DISTRICT LOT 538 PLAN 13977

PURSUANT TO SECTION 113, L.T.A.
B.C.G.S. 92G.025

INTEGRATED SURVEY AREA No. 31 VANCOUVER

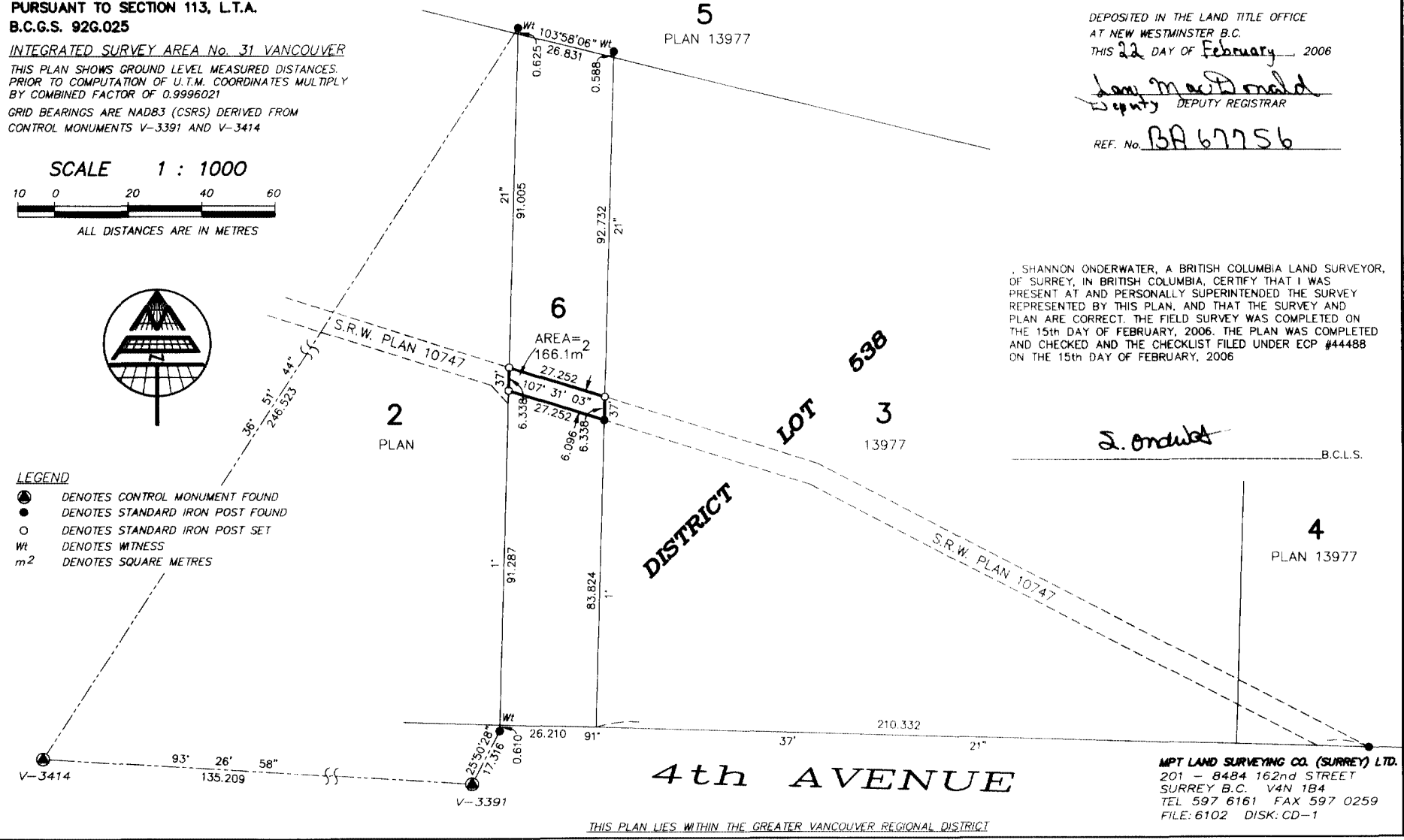
THIS PLAN SHOWS GROUND LEVEL MEASURED DISTANCES PRIOR TO COMPUTATION OF U.T.M. COORDINATES MULTIPLY BY COMBINED FACTOR OF 0.9996021

GRID BEARINGS ARE NADB3 (CSRS) DERIVED FROM CONTROL MONUMENTS V-3391 AND V-3414



LEGEND

- ⊙ DENOTES CONTROL MONUMENT FOUND
- DENOTES STANDARD IRON POST FOUND
- DENOTES STANDARD IRON POST SET
- Wt DENOTES WITNESS
- m² DENOTES SQUARE METRES



PLAN BCP 22381

DEPOSITED IN THE LAND TITLE OFFICE AT NEW WESTMINSTER B.C. THIS 22 DAY OF February 2006

Liam McDonald
Deputy DEPUTY REGISTRAR

REF. No. BA 67756

SHANNON UNDERWATER, A BRITISH COLUMBIA LAND SURVEYOR, OF SURREY, IN BRITISH COLUMBIA, CERTIFY THAT I WAS PRESENT AT AND PERSONALLY SUPERINTENDED THE SURVEY REPRESENTED BY THIS PLAN, AND THAT THE SURVEY AND PLAN ARE CORRECT. THE FIELD SURVEY WAS COMPLETED ON THE 15th DAY OF FEBRUARY, 2006. THE PLAN WAS COMPLETED AND CHECKED AND THE CHECKLIST FILED UNDER ECP #44488 ON THE 15th DAY OF FEBRUARY, 2006

S. Onclut B.C.L.S.

MPT LAND SURVEYING CO. (SURREY) LTD.
201 - 8484 162nd STREET
SURREY B.C. V4N 1B4
TEL 597 6161 FAX 597 0259
FILE: 6102 DISK: CD-1

THIS PLAN LIES WITHIN THE GREATER VANCOUVER REGIONAL DISTRICT

ORIGINAL