

STATUTORY RIGHT OF WAY PLAN OVER PART OF LOT 6 DISTRICT LOT 538 PLAN 13977

PURSUANT TO SECTION 113, L.T.A.
B.C.G.S. 92G.025

INTEGRATED SURVEY AREA No. 31 VANCOUVER

THIS PLAN SHOWS GROUND LEVEL MEASURED DISTANCES. PRIOR TO COMPUTATION OF U.T.M. COORDINATES MULTIPLY BY COMBINED FACTOR OF 0.9996021

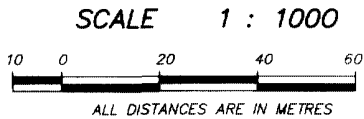
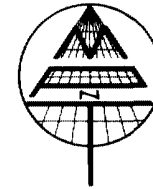
GRID BEARINGS ARE NAD83 (CSRS) DERIVED FROM CONTROL MONUMENTS V-3391 AND V-3414

PLAN BCP 22382

DEPOSITED IN THE LAND TITLE OFFICE AT NEW WESTMINSTER B.C. THIS 22 DAY OF February, 2006

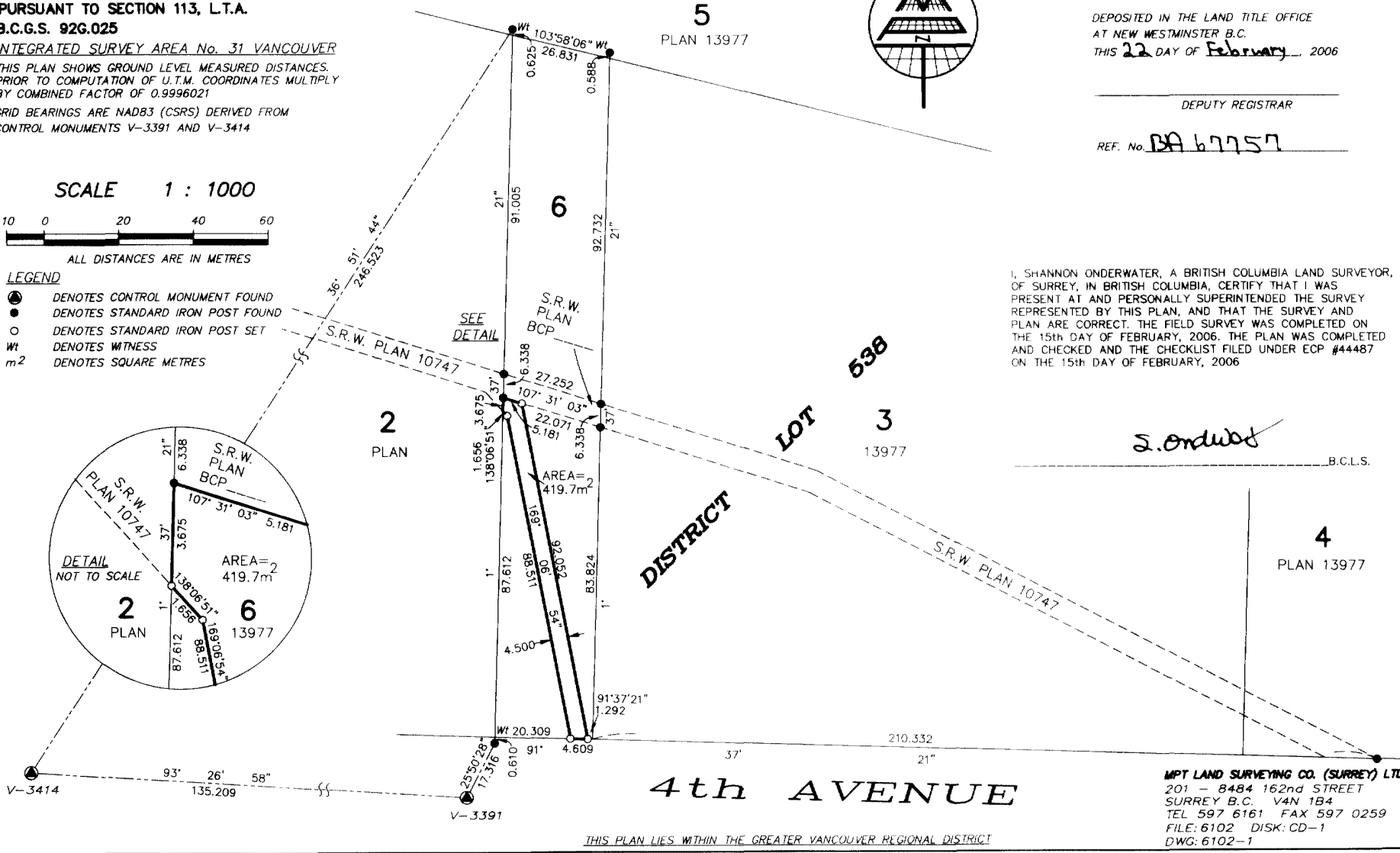
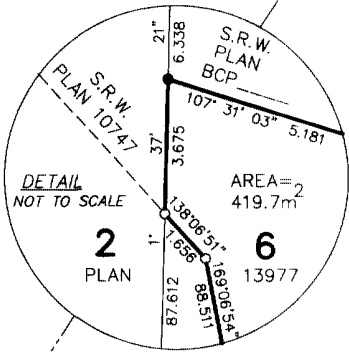
DEPUTY REGISTRAR

REF. No. BA 67757



LEGEND

- DENOTES CONTROL MONUMENT FOUND
- DENOTES STANDARD IRON POST FOUND
- DENOTES STANDARD IRON POST SET
- Wt DENOTES WITNESS
- m² DENOTES SQUARE METRES



I, SHANNON UNDERWATER, A BRITISH COLUMBIA LAND SURVEYOR, OF SURREY, IN BRITISH COLUMBIA, CERTIFY THAT I WAS PRESENT AT AND PERSONALLY SUPERINTENDED THE SURVEY REPRESENTED BY THIS PLAN, AND THAT THE SURVEY AND PLAN ARE CORRECT. THE FIELD SURVEY WAS COMPLETED ON THE 15th DAY OF FEBRUARY, 2006. THE PLAN WAS COMPLETED AND CHECKED AND THE CHECKLIST FILED UNDER ECP #44487 ON THE 15th DAY OF FEBRUARY, 2006

S. Underwater

B.C.L.S.

MPT LAND SURVEYING CO. (SURREY) LTD.
201 - 8484 162nd STREET
SURREY B.C. V4N 1B4
TEL 597 6161 FAX 597 0259
FILE: 6102 DISK: CD-1
DWG: 6102-1

THIS PLAN LIES WITHIN THE GREATER VANCOUVER REGIONAL DISTRICT

ORIGINAL