

REFERENCE PLAN OF PARCEL A, BLOCK 805, PLAN LMP 40757, AND OF BLOCK 806, PLAN 19380, BOTH OF DISTRICT LOT 526, GROUP 1, NEW WESTMINSTER DISTRICT.

PURSUANT TO SECTION 100 (1) (b), LAND TITLE ACT B.C.G.S. 926.025

SCALE 1:1000 ALL DISTANCES ARE IN METRES



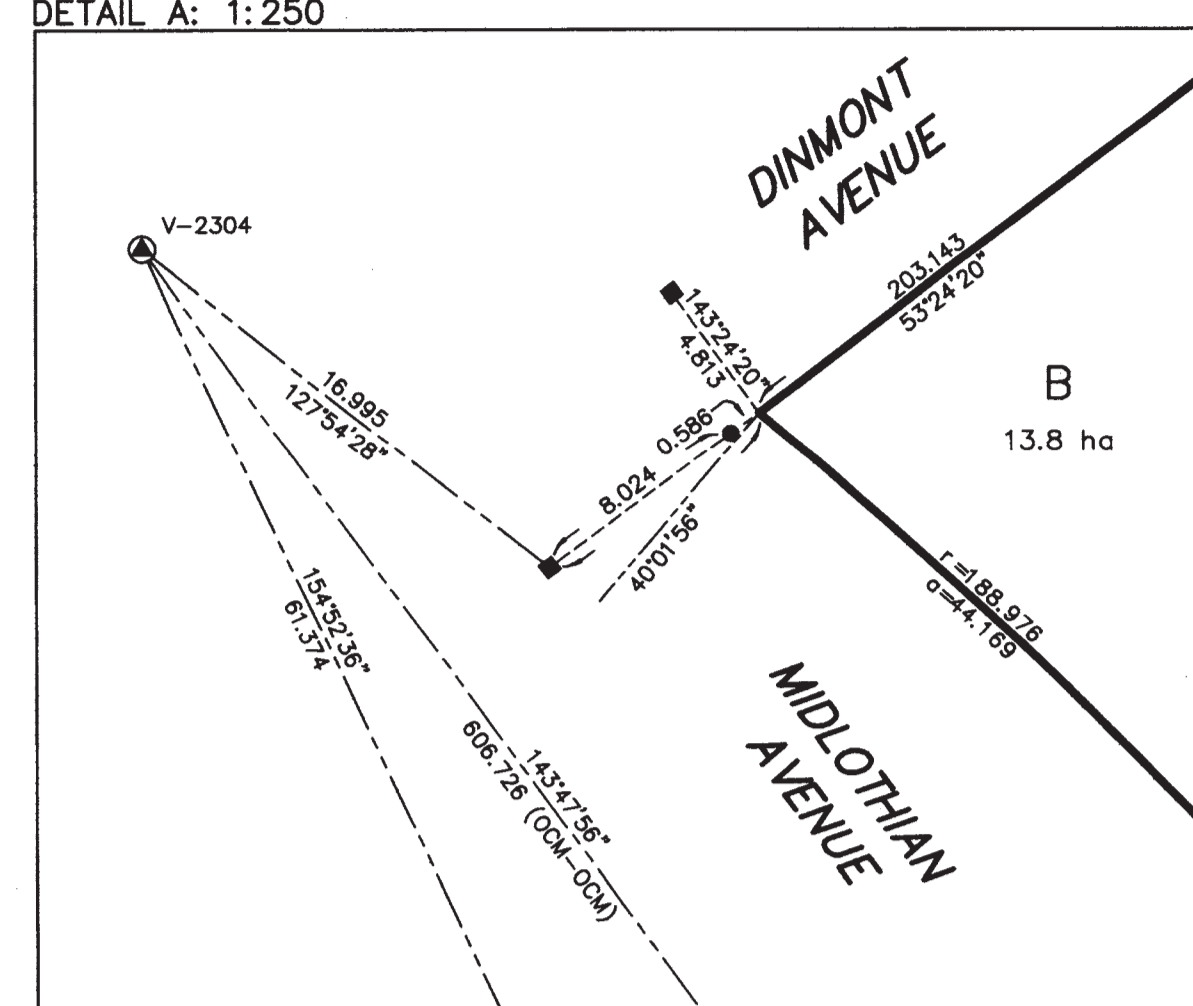
DEPOSITED IN THE LAND TITLE OFFICE AT NEW WESTMINSTER, BRITISH COLUMBIA, THIS DAY OF 2006.

REGISTRAR

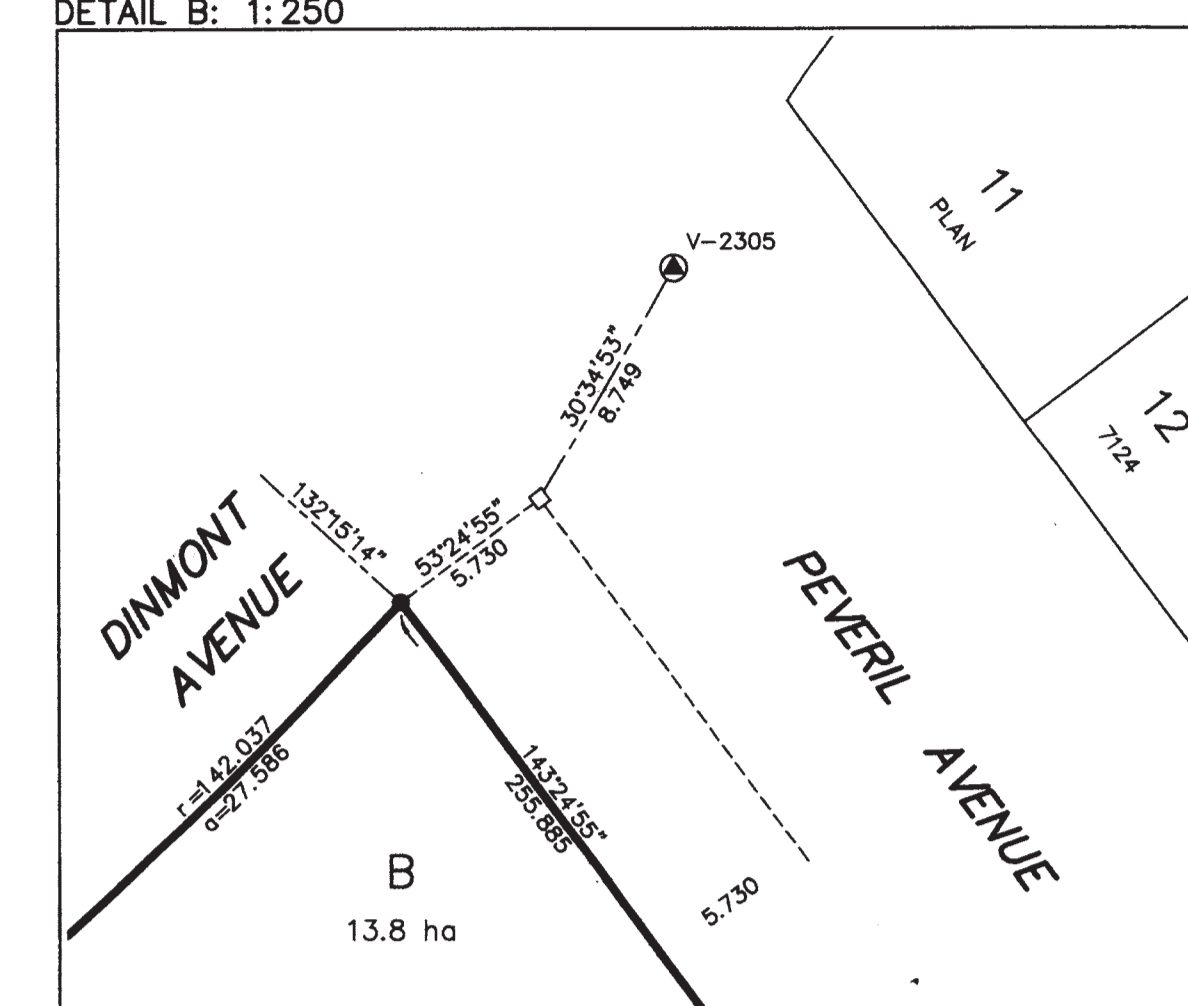
REFERENCE NO.

Appendix A Consolidation Plan

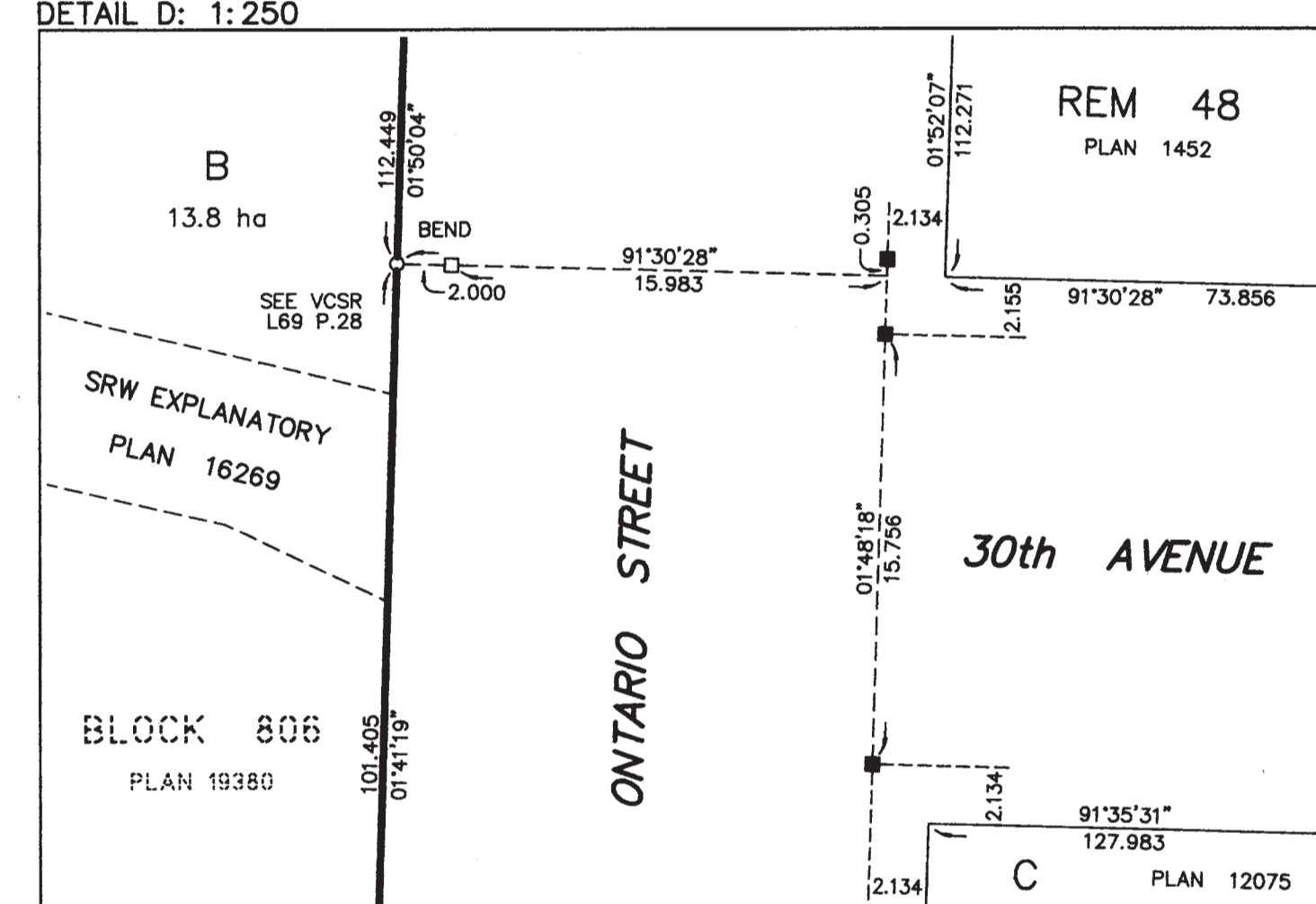
DETAIL A: 1:250



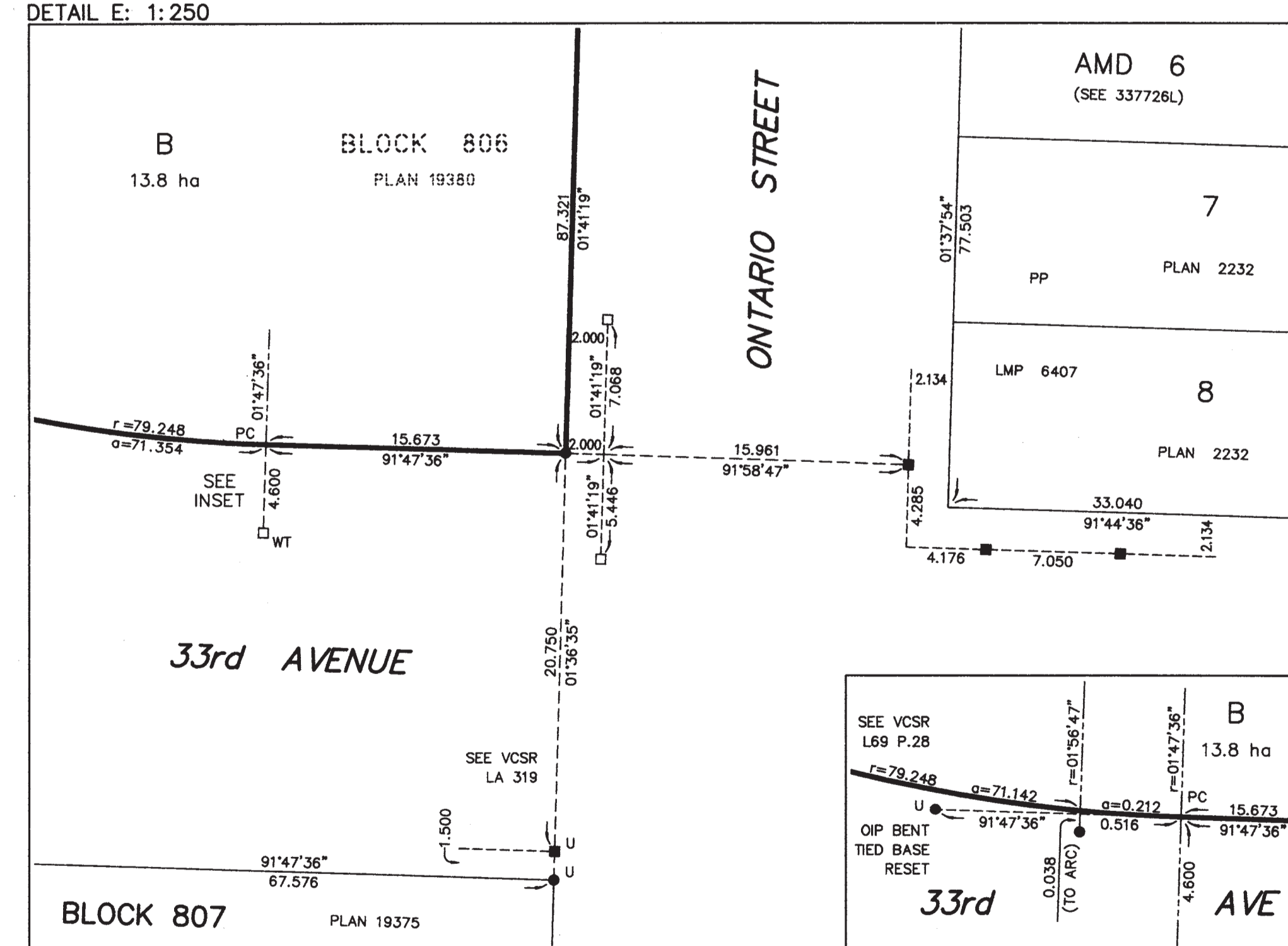
DETAIL B: 1:250



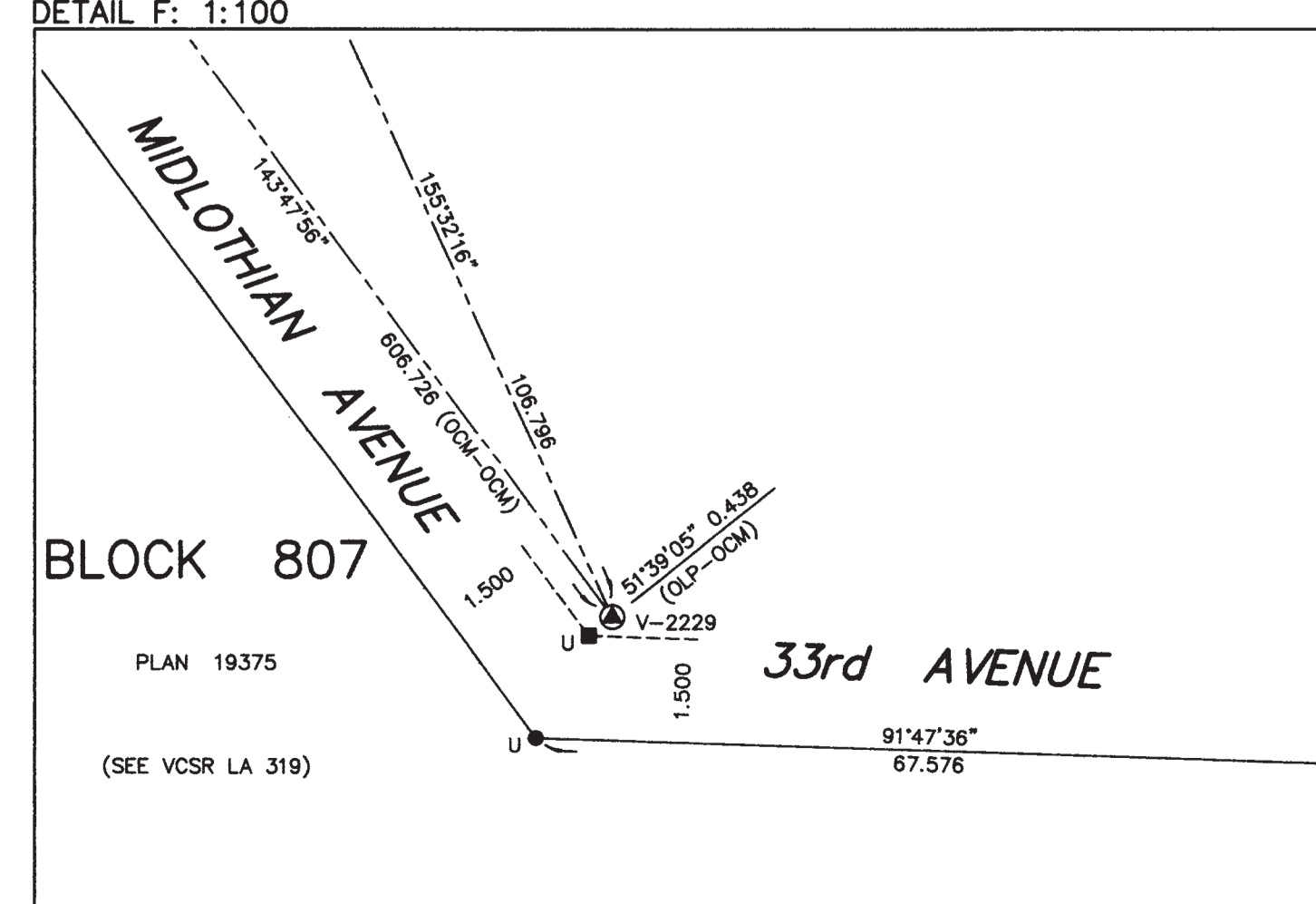
DETAIL D: 1:250



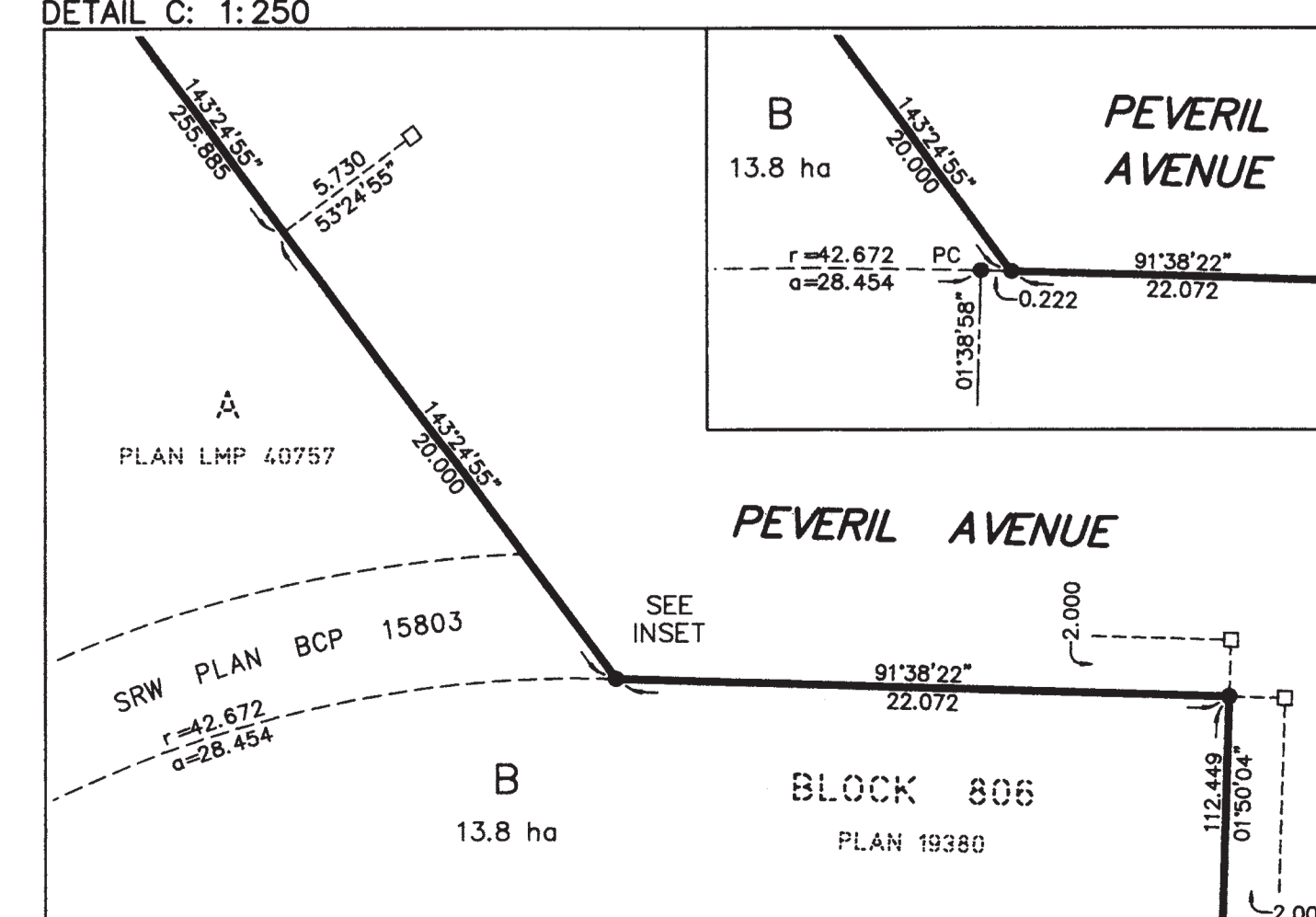
DETAIL E: 1:250



DETAIL F: 1:100



DETAIL C: 1:250



LEGEND

INTEGRATED SURVEY AREA 31, CITY OF VANCOUVER, NAD 83 (CSRS)

THIS PLAN SHOWS HORIZONTAL GROUND-LEVEL DISTANCES EXCEPT WHERE OTHERWISE NOTED. TO COMPUTE GRID DISTANCES, MULTIPLY GROUND-LEVEL DISTANCES BY COMBINED FACTOR 0.9995920.

GRID BEARINGS ARE DERIVED FROM OBSERVATIONS BETWEEN GEODETIC CONTROL MONUMENTS V-2229 AND V-2304.

- INDICATES CONTROL MONUMENT FOUND
- INDICATES LEAD PLUG FOUND
- INDICATES LEAD PLUG PLACED
- INDICATES STANDARD IRON POST FOUND
- INDICATES STANDARD IRON POST PLACED
- INDICATES UNREGISTERED
- VCSR INDICATES VANCOUVER CITY SURVEY RECORDS
- PP INDICATES POSTING PLAN

THIS PLAN LIES WITHIN THE GREATER VANCOUVER REGIONAL DISTRICT

REGISTERED OWNER: CITY OF VANCOUVER

AUTHORIZED SIGNATORY

WITNESS

WITNESS (PRINT NAME)

OCCUPATION OF WITNESS

ADDRESS OF WITNESS

I, ERIC I. KAARDAL, A BRITISH COLUMBIA LAND SURVEYOR, OF THE CITY OF NEW WESTMINSTER, BRITISH COLUMBIA, CERTIFY THAT I WAS PRESENT AT AND PERSONALLY SUPERINTENDED THE SURVEY REPRESENTED BY THIS PLAN AND THAT THE SURVEY AND PLAN ARE CORRECT. THE FIELD SURVEY WAS COMPLETED ON THE 20th DAY OF JUNE, 2006. THE PLAN WAS COMPLETED AND CHECKED, AND THE CHECKLIST FILED UNDER ECP 51265 ON THE 12th DAY OF JULY, 2006.

Eric I. Kaardal
CITY OF VANCOUVER (604) 873-7160