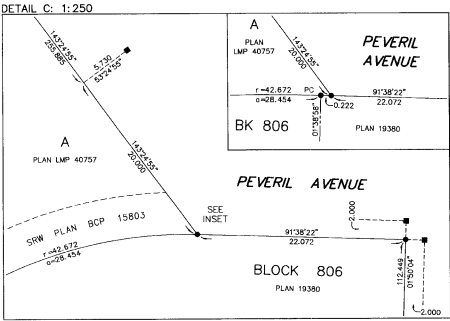
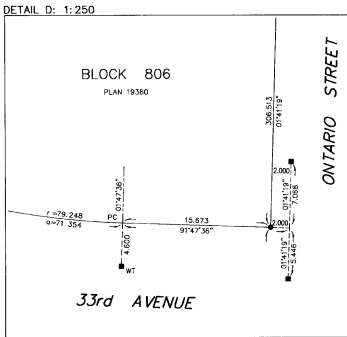
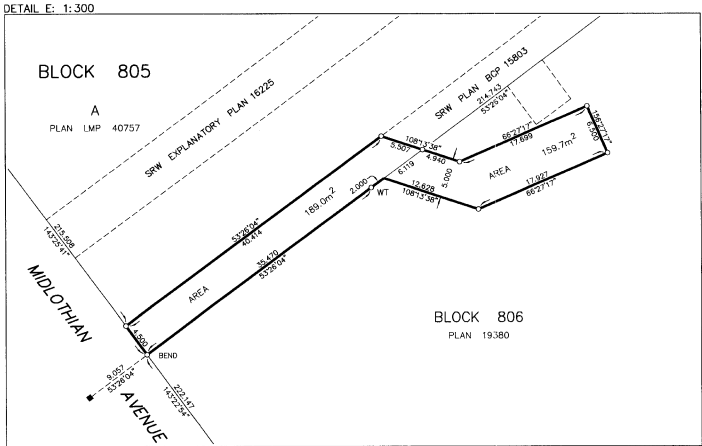
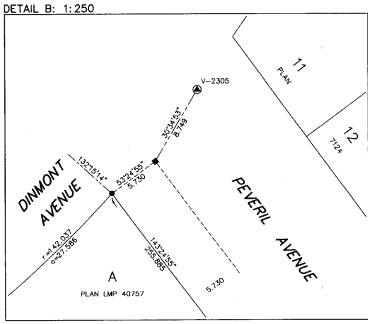
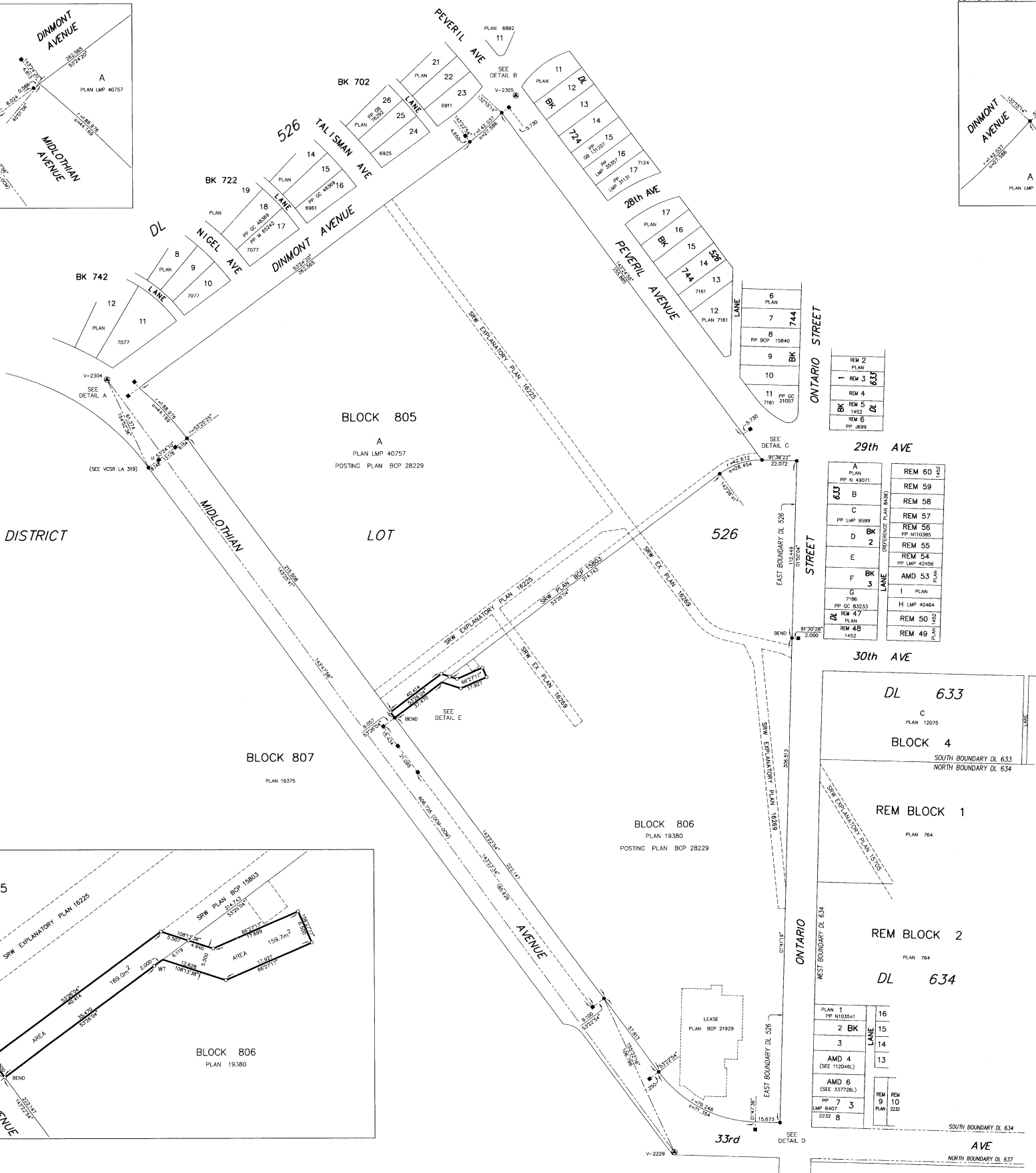
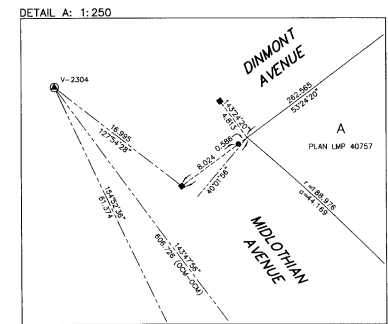


REFERENCE PLAN OF STATUTORY RIGHT OF WAY OVER PART OF DISTRICT LOT 526, GROUP 1, NEW WESTMINSTER DISTRICT.

PURSUANT TO SECTION 99 (1) (a), LAND TITLE ACT.
B.C.G.S. 926.025



BOOK OF REFERENCE	
LEGAL DESCRIPTION	AREA m ²
PARCEL A, BLOCK 805, DISTRICT LOT 526, GROUP 1, NEW WESTMINSTER DISTRICT, PLAN LMP 40757	189.0
BLOCK 806, DISTRICT LOT 526, PLAN 19380, GROUP 1, NEW WESTMINSTER DISTRICT.	159.7
TOTAL	348.7



LEGEND
SEE POSTING PLAN BCP 28229
INTEGRATED SURVEY AREA 31, CITY OF VANCOUVER, NAD 83 (CSRS)
THIS PLAN SHOWS HORIZONTAL GROUND-LEVEL DISTANCES EXCEPT WHERE OTHERWISE NOTED. TO COMPUTE GRID DISTANCES, MULTIPLY GROUND-LEVEL DISTANCES BY COMBINED FACTOR 0.99959220.
GRID BEARINGS ARE DERIVED FROM OBSERVATIONS BETWEEN GEODETIC CONTROL MONUMENTS V-2229 AND V-2304.
● INDICATES CONTROL MONUMENT FOUND
● INDICATES LEAD PILE FOUND
● INDICATES STANDARD IRON POST FOUND
○ INDICATES STANDARD IRON POST PLACED
VCSR INDICATES VANCOUVER CITY SURVEY RECORDS
PP INDICATES POSTING PLAN

THIS PLAN LIES WITHIN THE GREATER VANCOUVER REGIONAL DISTRICT

PLAN BCP

DEPOSITED IN THE LAND TITLE OFFICE AT
NEW WESTMINSTER, BRITISH COLUMBIA,
THIS DAY OF MAY, 2007.

REGISTERED

REFERENCE NO.

L. ERIC L. KAMMEL, A BRITISH COLUMBIA LAND SURVEYOR,
OF THE CITY OF NEW WESTMINSTER IN BRITISH COLUMBIA, CERTIFY
THAT I WAS PRESENT AT AND PERSONALLY SUPERINTENDED THE
SURVEY REPRESENTED BY THIS PLAN AND THAT THE SURVEY AND
PLAN ARE CORRECT. THE FIELD SURVEY WAS COMPLETED ON
THE 7TH DAY OF MAY, 2007. THE PLAN WAS COMPLETED
AND CHECKED, AND THE CHECKLIST FILED UNDER EOP #4208
ON THE 8TH DAY OF MAY, 2007.
Eric L. Kammel
CITY OF VANCOUVER (004) 833-7349
B. C. L. S.