

Date: May 16, 2008



**TO: Board Members – Vancouver Park Board**  
**FROM: General Manager – Parks and Recreation**  
**SUBJECT: Roundhouse Turntable Plaza**

---

## RECOMMENDATION

*THAT the Board approve the attached design concept for the redevelopment of the Roundhouse Turntable Plaza, described in this report and illustrated in Appendix 1.*

## POLICY

The Park Board reviews and approves design concept for all major projects.

## BACKGROUND

Over the last year, the Park Board staff has been working closely with the Roundhouse Community Centre Association on the improvements to the existing Roundhouse Turntable Plaza. The Association hosted a design charette and public open house early in 2008. The existing plaza is completely under-utilized by the community centre and public in general. There has been a great interest expressed by different groups to use the Turntable Plaza for: community centre programs (arts, crafts, performances), special public events throughout the year (jazz festival, farmers market, theatre), The Vancouver 2010 Olympic and Paralympic Winter Games. Furthermore there is a desire to animate the plaza informally on a day-to-day basis.

Nick Milkovich Architects and Phillips Farevaag Smallerberg Landscape consultants were retained by the Park Board to develop a design concept for the revitalization of the Roundhouse Turntable Plaza. Series of building committee meetings and a design charette were organized to address the programming and functional requirements of the plaza, relationship with the community centre and neighbors, heritage aspect of the existing Roundhouse building, access to community centre and Turntable Plaza from both Davie Street and David Lam Park.

The concept plan has now evolved to a point, where a public open house will take place on May 18, 2008. Staff will report at the Board meeting on public reaction to the concept.

## **DISCUSSION**

Proposed design animates the Turntable Plaza and provides a multifunctional weather protection in a form of a movable tent in the middle of a plaza and canopy along the community centre building. Projected capacity of a plaza is 500-750 people, depending on the plaza “set up”.

Architects propose a very creative solution for the tent and canopy design. A custom designed crane in the middle of a turntable is hydraulically operated foldable structure that can carry a web of cables. Hi-tech fabric is then tensioned across the cables in different scenarios that fully or partially cover the plaza. Without the fabric, cable structure can be used to suspend banners, lights, lanterns and other different objects that may vary seasonally. Without the canopy and cables, the crane would simply illuminate the turntable. Refer to different options in Appendix 1 attached.

Turntable bridge is rotated and leveled to allow for better functional interaction with the community centre, better staging options and animation of the plaza.

Variety of a “soft” design elements are introduced to enhance the sense of a place and create a warm and inviting feel: improved way-finding and lighting, mist feature, new plaza furniture, and vending kiosk opportunities.

The proposed concept is sufficiently developed to form a basis of a fundraising campaign, which, if successful, would enable this project to be completed before 2010 and become a suitable legacy associated with the 2010 Winter Games use of the Roundhouse.

## **SUMMARY**

Staff proposes that Board approve the Roundtable Plaza concept design enclosed. After feedback from the Open house on May 18, 2008, a design team will proceed with a fundraising campaign and once sufficient funds are secured, undertake design development and regulatory approvals.

Prepared by:  
Planning and Operations  
Vancouver Board of Parks and Recreation  
Vancouver, BC

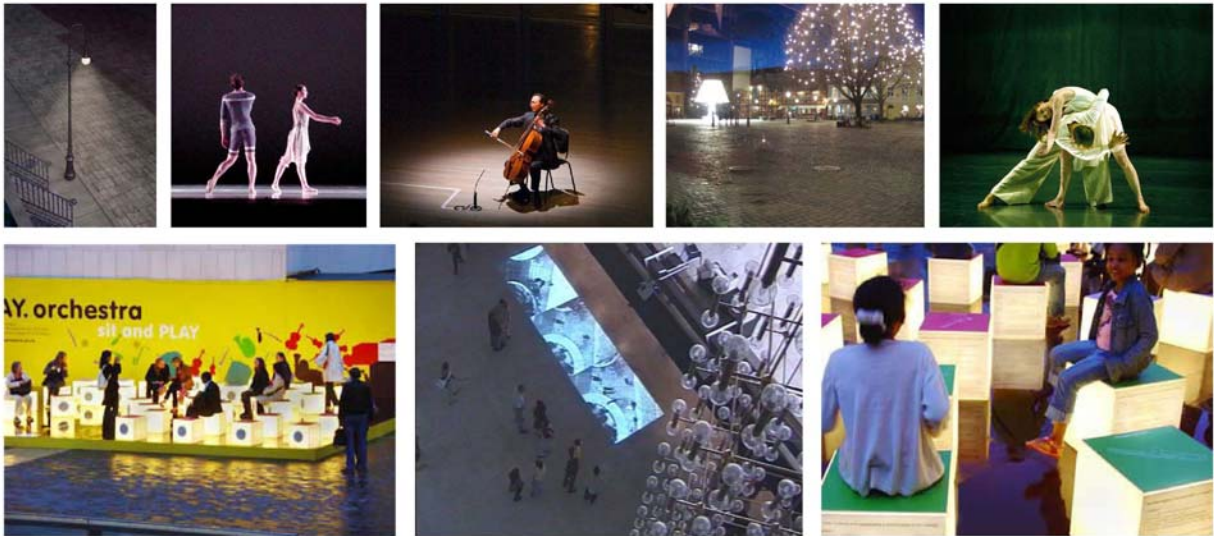
DD:ek

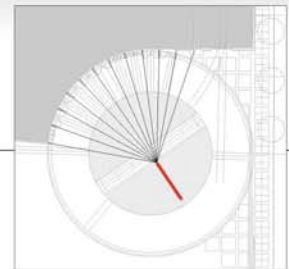
Roundhouse Turntable Plaza:  
APPENDIX 1



## CRANE

- As a single sculptural element, the Crane can stand alone as a focal point in the Plaza and at night can provide a quiet single point of light to feature the Turntable at the centre of the Plaza





## CABLES

- Cables span from the apex of the Crane and attach to the Roundhouse structure above door height allowing maximum visibility of the historic façade. Cables provide rigging points for festive elements such as banners, lanterns, lights and for aerial performers and performance apparatus
- The cable option gives definition to the Plaza space yet leaves it open to the urban surroundings and natural elements

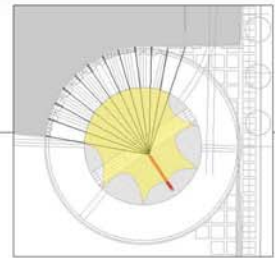




## CANOPY

- Attached adjacent to the Roundhouse façade, the canopy option provides an awning which allows Roundhouse exhibition and theatre activities to spill out into the Turntable Plaza under protection from the elements when doors are opened. The material for this canopy will be translucent in nature.





## TENT

- The tent component focuses on protection of Turntable activities and serves as a band shell for concerts and other performances. Acoustic material can be attached to the cables which support the tent.

