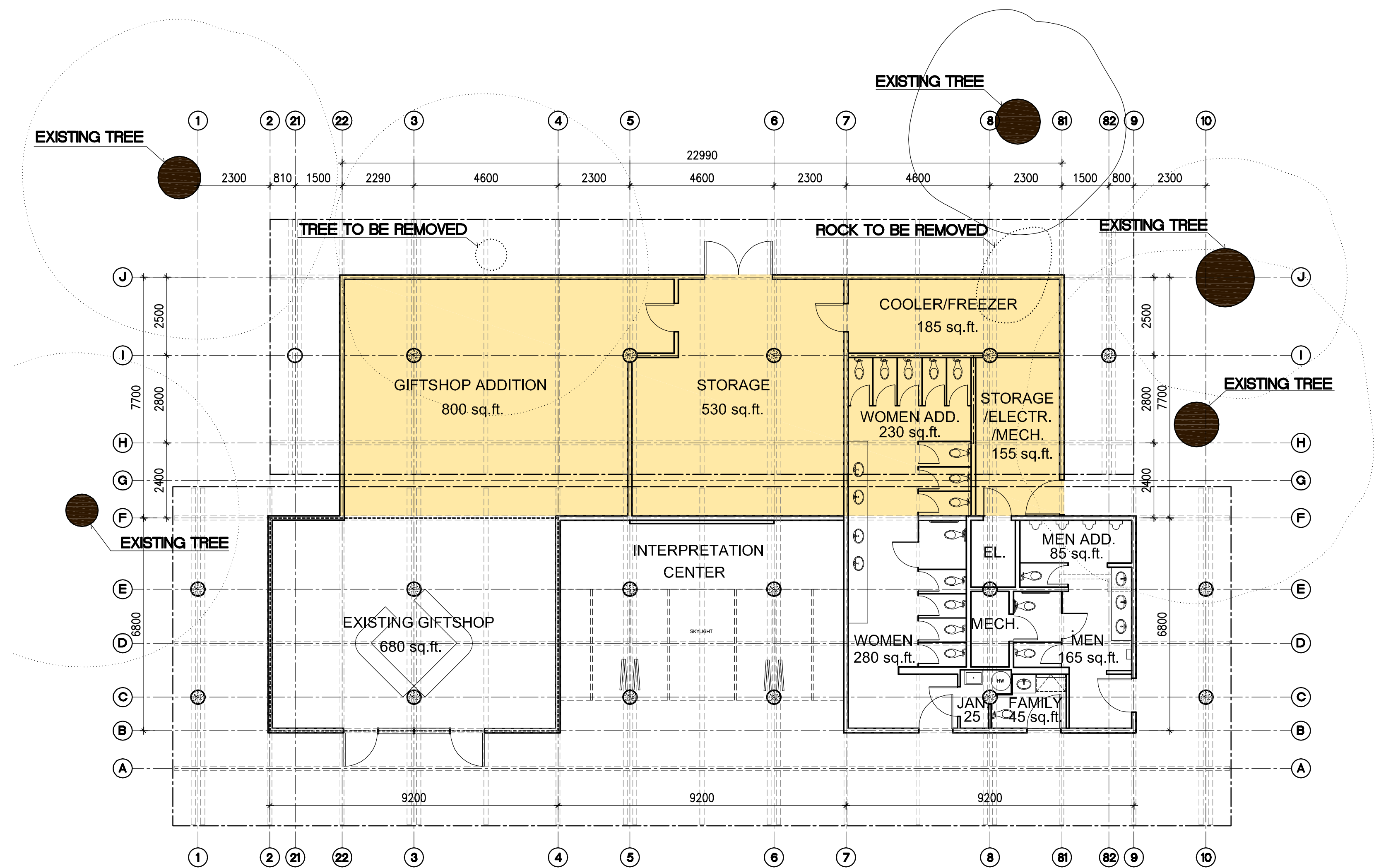
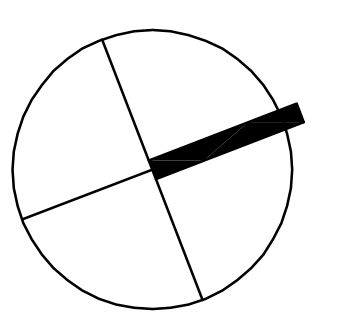


NORTH

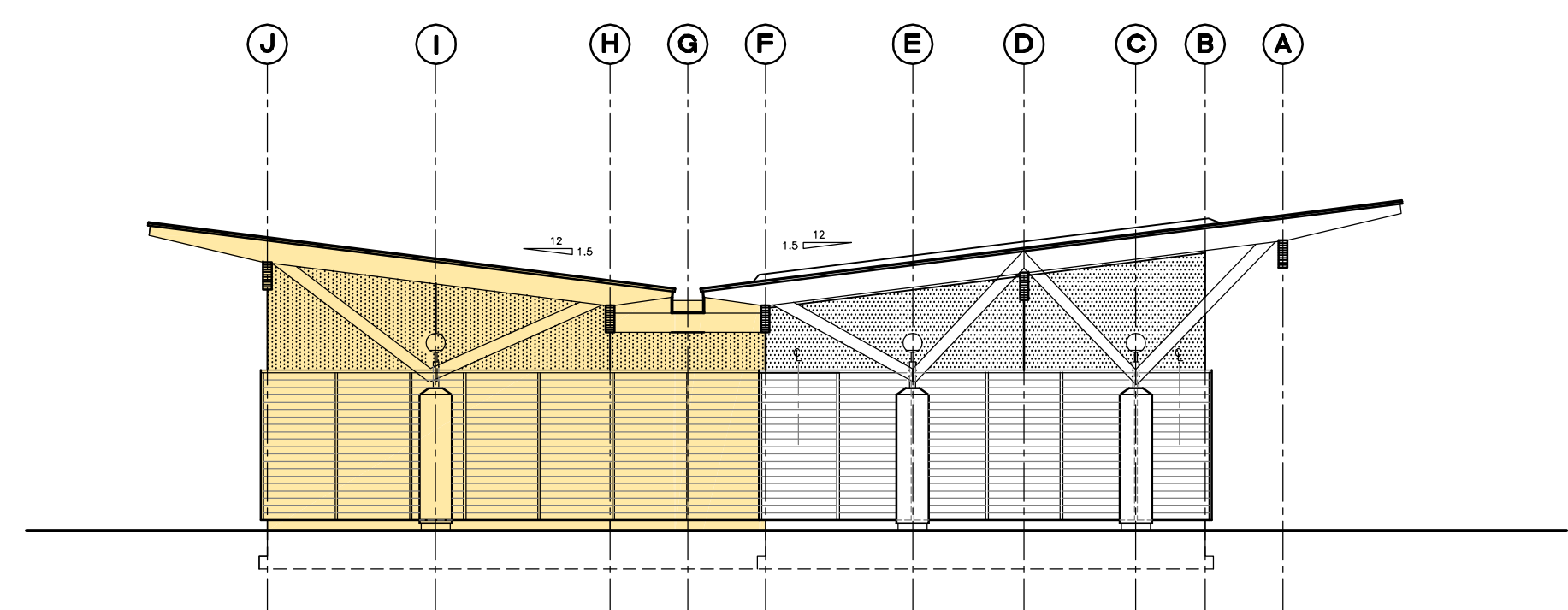


**ALTERNATIVE 12, SCALE M 1:100**

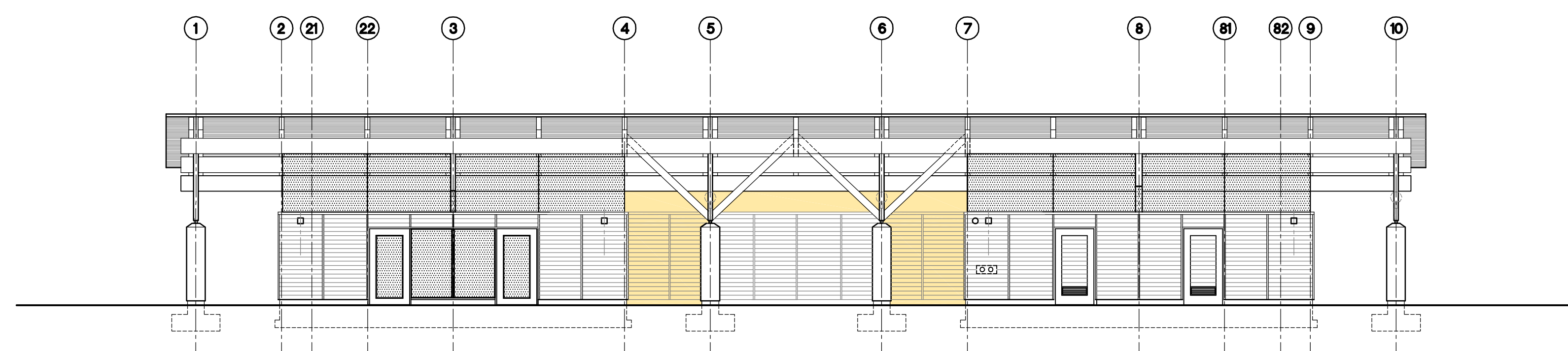
**ADDITIONAL GROSS FLOOR AREA**

	REQ.	PROV.
GIFTSHOP	800 sq.ft.	800 sq.ft.
STORAGE	500 sq.ft.	530 sq.ft.
COOLER / FREEZER	200 sq.ft.	185 sq.ft.
PUBLIC WASH./STORAGE	400 sq.ft.	385 sq.ft.
<b>TOTAL</b>	<b>1,900 sq.ft.</b>	<b>1,900 sq.ft.</b>

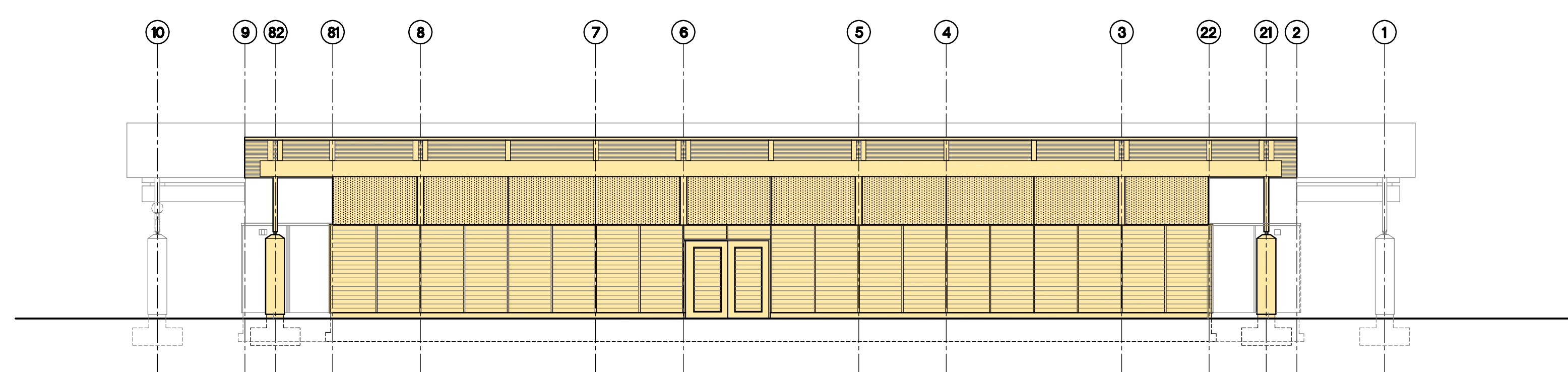
**MAIN FLOOR PLAN**



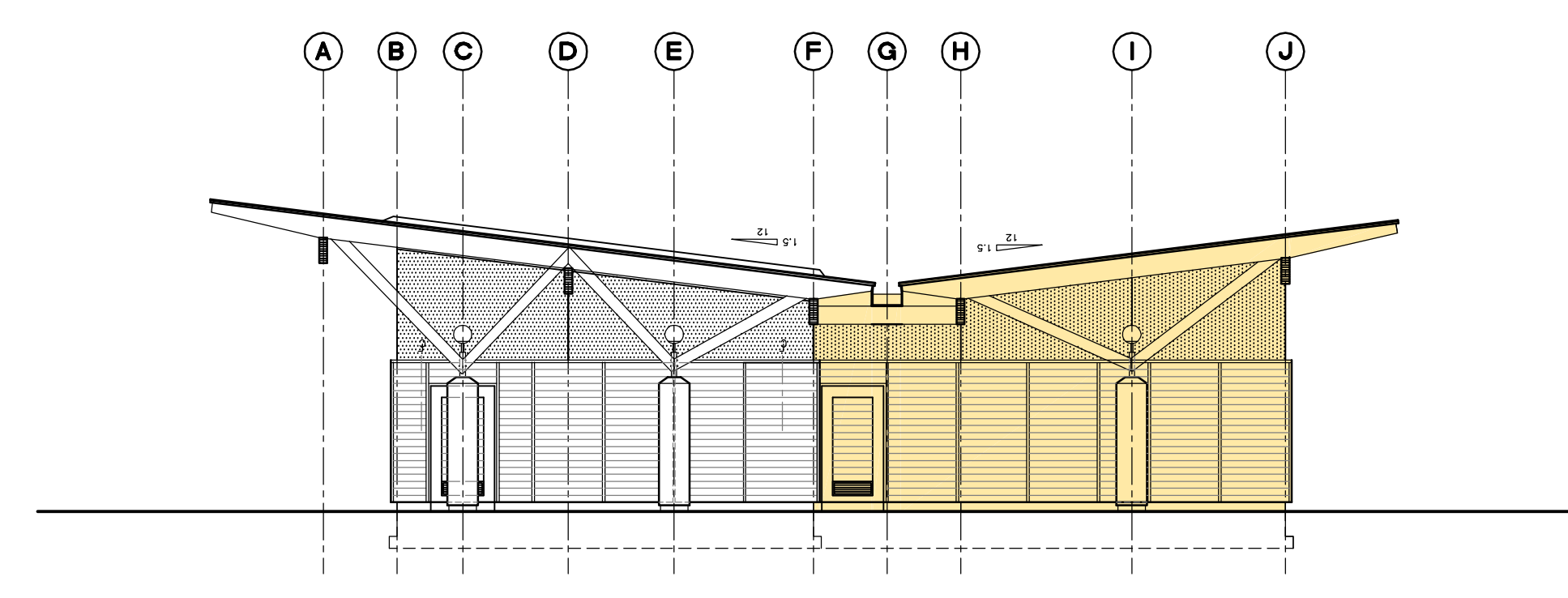
**SOUTH ELEVATION**



**EAST ELEVATION**



**WEST ELEVATION**



**NORTH ELEVATION**

Project  
**ADDITION TO TOTEM POLE VISITOR CENTRE**  
 IN STANLEY PARK  
 VANCOUVER, BC

**LUBOR TRUBKA ASSOCIATES ARCHITECTS**  
 #1200-1500 West Georgia Street  
 Vancouver B.C. TEL: 604-687-3722  
 V6G 2Z6 FAX: 604-687-3723

Drawing  
**PRELIMINARY FLOOR PL. & ELEV. ALTERNATIVE 12**

Project No.	-	Drawing No.	<b>A08</b>
Date	JUNE 12, 2008		
Scale	M 1:100		
Drawn	RZ		