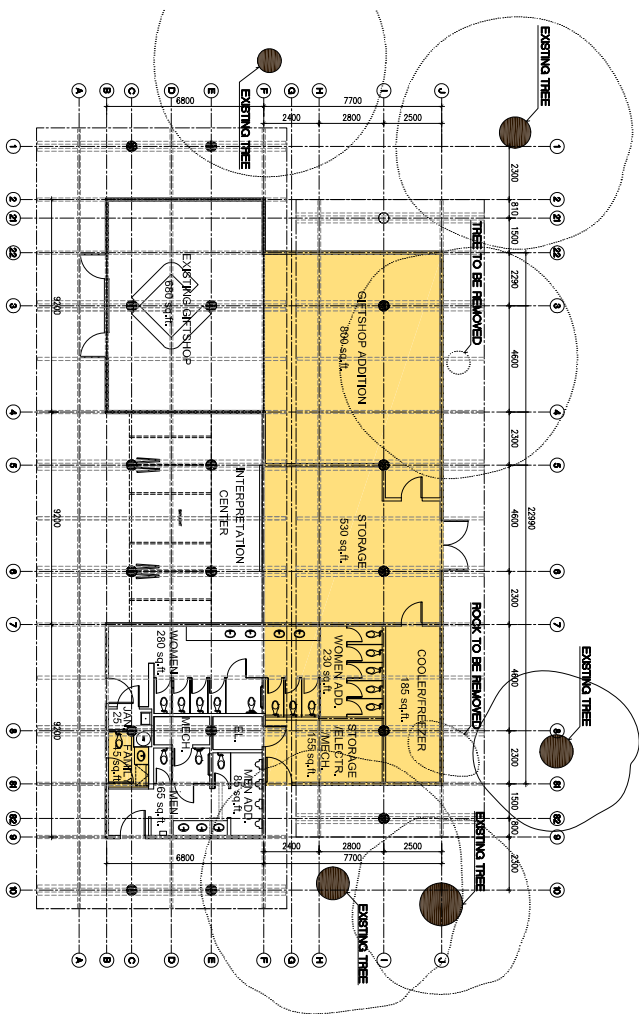


APPENDIX A

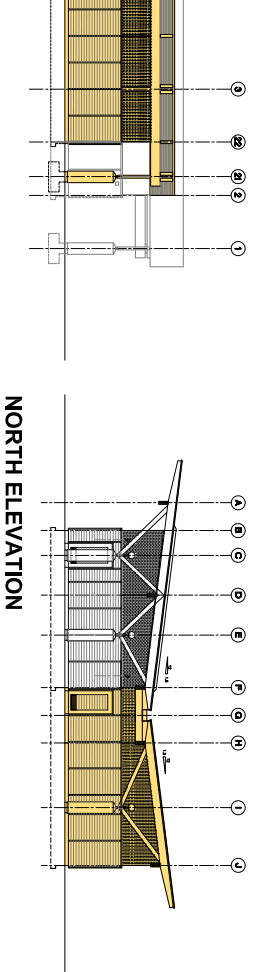
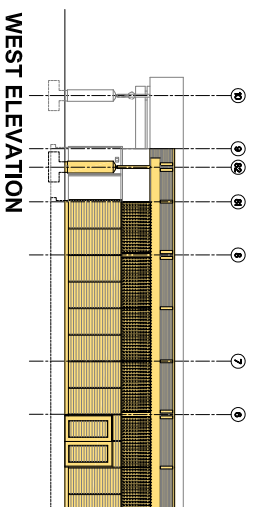
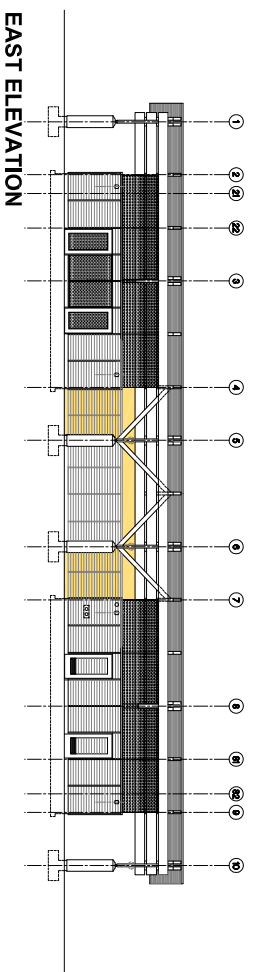
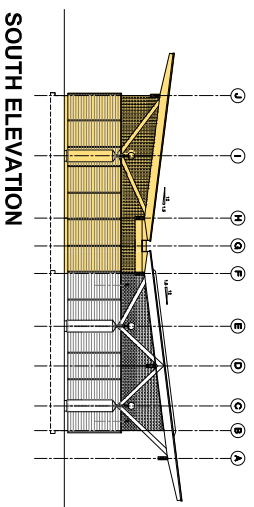
Copyright © 2018, Architect. All rights reserved. Reproduction in whole or in part is prohibited. This drawing is the property of the Architect and shall remain the property of the Architect. No part of this drawing may be reproduced, stored in a retrieval system, or transmitted in any form or by any means, electronic, mechanical, photocopying, recording, or by any information storage and retrieval system, without the prior written permission of the Architect.



MAIN FLOOR PLAN

OPTION 1
ADDITIONAL GROSS FLOOR AREA

	REQ.	PROV.
GIFTSHOP	800 sq.ft.	800 sq.ft.
STORAGE	500 sq.ft.	530 sq.ft.
COOLER / FREEZER	200 sq.ft.	185 sq.ft.
PUBLIC WASH/STORAGE	400 sq.ft.	385 sq.ft.
TOTAL	1,900 sq.ft.	1,900 sq.ft.



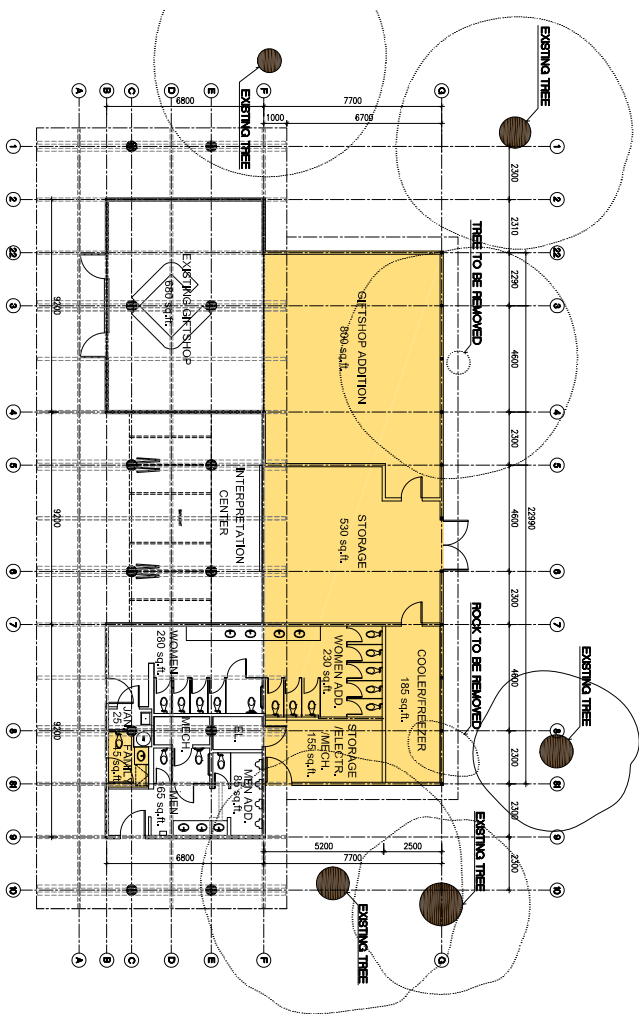
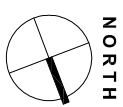
Project
ADDITION TO TOIEM POLE
VISITOR CENTRE
IN STANLEY PARK
VANCOUVER, BC

LABOR TRUBKA
ARCHITECTS
4120-C-1003 West Georgia Street
V6G 2Z6
PH: 604-251-2122

Prepared by
LABOR TRUBKA ARCHITECTS
Drawing No.
A08

Client
AUG 25, 2018
Scale
1/4" = 1'-0"
Sheet
122

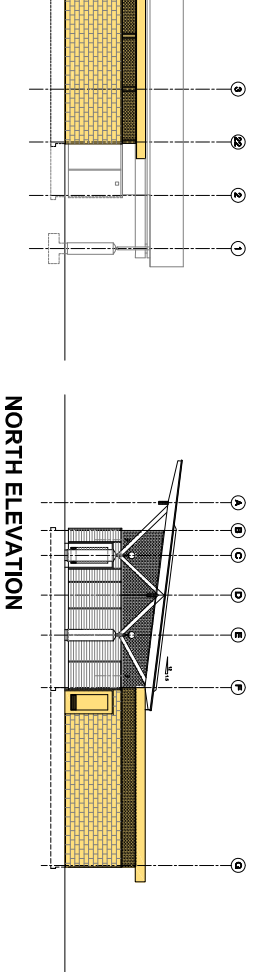
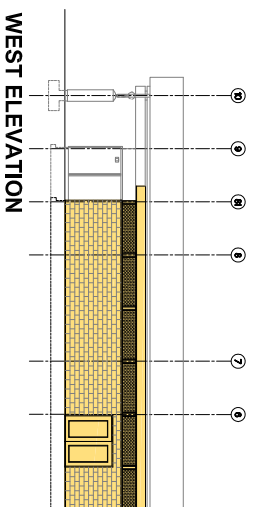
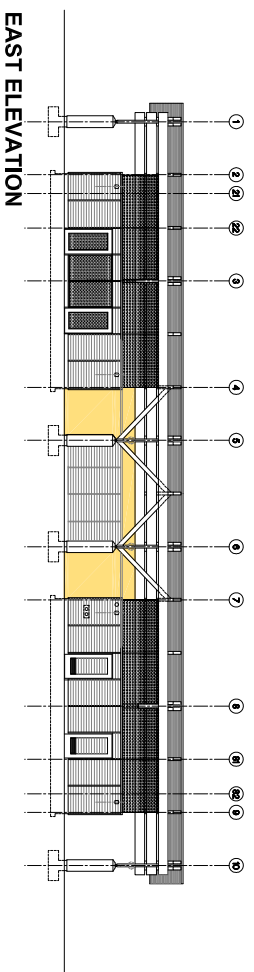
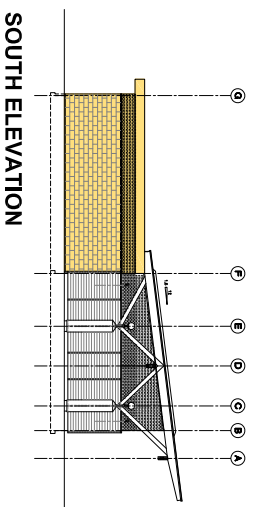
Copyright © 2008, Architectural Association Inc. All rights reserved. This drawing is the property of the Architectural Association Inc. and shall remain the property of the Architectural Association Inc. No part of this drawing may be reproduced, stored in a retrieval system, or transmitted in any form or by any means, electronic, mechanical, photocopying, recording, or by any information storage and retrieval system, without the prior written permission of the Architectural Association Inc.



MAIN FLOOR PLAN

OPTION 2
ADDITIONAL GROSS FLOOR AREA

	REQ.	PROV.
GIFTSHOP	800 sq.ft.	800 sq.ft.
STORAGE	500 sq.ft.	530 sq.ft.
COOLER / FREEZER	200 sq.ft.	185 sq.ft.
PUBLIC WASH/STORAGE	400 sq.ft.	385 sq.ft.
TOTAL	1,900 sq.ft.	1,900 sq.ft.



Project: ADDITION TO TOIEM POLE VISITOR CENTRE IN STANLEY PARK VANCOUVER, BC

Client: LIBOR TRUBKA ARCHITECTS

Address: #1200-C-1000 WEST GEORGIA STREET VANCOUVER BC V6G 2Z6

Design No.: -

Scale: AUG 28, 2008

Sheet: M1 1/100

Drawing No.: **A08a**

Project Name: PRELIMINARY FLOOR PL. & ELEV. OPTION 2

**ELEMENTAL COMPARISON OF CONSTRUCTION COSTS
BETWEEN "OPTION 1" AND "REVISED OPTION 2" DESIGN**

ELEMENT		QUANTITY M ²	UNIT COST	ITEM COST
A.23 Roof Construction	Option 1	268.00	574.63	154,000.00
	Revised Option 2	268.00	374.63	100,400.00
A.321 Walls above grade	Option 1	92.16	347.22	32,000.00
	Revised Option 2	92.16	517.58	47,700.00
A.331 Windows & louvers	Option 1	61.44	813.80	50,000.00
	Revised Option 2	61.44	574.54	35,300.00
A.341 Roofing	Option 1	268.00	159.70	42,800.00
	Revised Option 2	268.00	127.61	34,200.00
A.343 Soffit and projections	Option 1	0.00	0.00	0.00
	Revised Option 2	92.00	195.65	18,000.00
B.22 Ceiling Finishes	Option 1	268.00	26.87	7,200.00
	Revised Option 2	176.00	65.34	11,500.00
BUILDING COST REDUCTION TOTAL:				\$ 38,900.00
Z.1 General Requirements	Option 1			\$303,000.00
	Revised Option 2			\$289,000.00
GENERAL REQUIREMENTS REDUCTION TOTAL:				\$ 14,000.00
COST OF PROJECT REDUCTION TOTAL:				\$ 52,900.00