



Vancouver Board of Parks and Recreation
Regular Board Meeting

March 31, 2008
Park Board Main Office, 2099 Beach Avenue

Visit the Park Board web site at vancouverparks.ca

**Commemorative Naming
Oak Park Tennis Courts**

Recommendation

THAT the Board approve the commemorative naming of two tennis courts in Oak Park after Vancouver tennis player Lorne Main.

Vancouver Board of Parks and Recreation | vancouverparks.ca



**Commemorative Naming
Oak Park Tennis Courts**

Recommendation

THAT the Board approve the commemorative naming of two tennis courts in Oak Park after Vancouver tennis player Lorne Main.

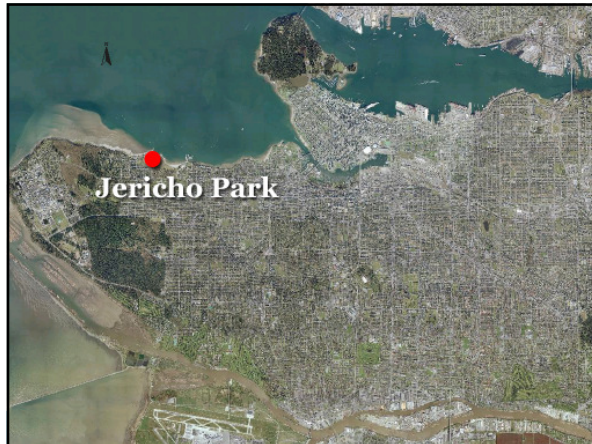
Vancouver Board of Parks and Recreation | vancouverparks.ca

**Commemorative Naming
Wallace Field**

Recommendation

THAT the Board approve the commemorative naming of the playing field in Jericho Park after RCAF pilots, Blake, Richard, Philip and David Wallace.

Vancouver Board of Parks and Recreation | vancouverparks.ca



**Commemorative Naming
Wallace Field**

Recommendation

THAT the Board approve the commemorative naming of the playing field in Jericho Park after RCAF pilots, Blake, Richard, Philip and David Wallace.

Vancouver Board of Parks and Recreation | vancouverparks.ca

**Vancouver International Sculpture
Biennale**

Recommendation

A) THAT the Board consult with the public on a proposal from the Biennale Foundation that some of the temporarily installed sculptures remain on park land beyond the originally agreed on 18 month period but not beyond September 2015.

B) THAT the Board direct staff to initiate the standard donation processes for the sculpture "Echoes" proposed by the Biennale for donation to the Park Board.

C) THAT the Board direct the Biennale to remove of the sculpture "Device to Root Out Evil" as per the terms of the original agreement.

Vancouver Board of Parks and Recreation | vancouverparks.ca

Vancouver Biennale

In 2005 the Park Board entered into a contract with the Biennale Foundation for a series of 6 temporary exhibitions.

The sculptures compliment other forms of public art in parks and on other civic land.

Vancouver Board of Parks and Recreation
Regular Board Meeting – March 10, 2008
Park Board Main Office - 2099 Beach Avenue

SCULPTURE LOCATIONS

- 01 – Memorial Park, Fyfe, Parker
- 02 – Beach of Action, Wang Pao-Hsin
- 03 – Celebration by Wang Pao-Hsin
- 04 – Diamond Gate, Shih Tsun-shan
- 05 – 3 Arise, S.S. Barkat Usaid
- 06 – English Garden, Sean Mather, Bill Ford
- 07 – Beyond, Michael Proulx
- 08 – 217, D. Reid, N. H. Bouscar, Vincent
- 09 – Figure in Clouds, S. Marwan, Sabah
- 10 – Portal, Albert Papp
- 11 – Sculpture, Glenn Oppenheim
- 12 – Suite, Marwan S. B. Sabah, Vincent Oppenheim
- 13 – Celebration, Marwan Sabah, Marwan Sabah
- 14 – Suite, Marwan S. B. Sabah, Vincent Oppenheim
- 15 – Suite, Marwan S. B. Sabah, Vincent Oppenheim
- 16 – Suite, Marwan S. B. Sabah, Vincent Oppenheim
- 17 – Suite, Marwan S. B. Sabah, Vincent Oppenheim
- 18 – Suite, Marwan S. B. Sabah, Vincent Oppenheim
- 19 – Suite, Marwan S. B. Sabah, Vincent Oppenheim
- 20 – Suite, Marwan S. B. Sabah, Vincent Oppenheim
- 21 – Suite, Marwan S. B. Sabah, Vincent Oppenheim
- 22 – Suite, Marwan S. B. Sabah, Vincent Oppenheim

The first Biennale, launched in July of 2005, saw 24 works of art installed around the city.

18 of the sculptures were installed on parkland at 17 sites, located in 10 parks; mainly along the waterfront.

Parks	Sites
1.) Kitsilano Beach	1.) grassy area north of the Watermark
2.) Vanier Park	2.) grassy area north of the Vancouver Museum 3.) grassy area northeast of the Vancouver Museum
3.) Thornton Park	4.) planter west of the via-rail/ bus depot entrance
4.) Sunset Beach	5.) sand area south of the concession 6.) sand area north-west of site (4,6)
5.) English Bay	7.) Huntington Meadows near the foot of Broughton 8.) west of 2099 beach on grassy cliff-top
6.) Morton Park	9.) in the grassy triangle
7.) Devonian Harbour Park	10.) near the pond 11.) grassy area overlooking boat moorage 12.) grassy area visible from Georgia St.
8.) Cadboro Park	13.) grassy area
9.) Harbour Green Park	14.) near the foot of Jervis 15.) grassy square near foot of Bute 16.) grassy area in east section
10.) Queen Elizabeth	17.) southwest slope below the Celebration Pavillion

The 18 month term of the first Biennale exhibition has expired. Currently 4 of the sculptures installed as part of the first Biennale remain on park land.

While these were originally proposed for loan 'in perpetuity' to the Board, subsequent discussions altered the proposal.

Proposal for the remaining 5 Biennale exhibitions:

- the number of exhibitions and their duration will not change;
- the number of sites and their locations will stay the same as in the inaugural Biennale exhibition;
- sculptures may remain in a single location beyond 18 months with written permission of Park Board
- sculptures may be brought back with written permission of the Park Board.

The current proposal substantially alters the 'temporary' nature of the Biennale, and a public consultation is recommended.

The Park Board's Art Policy (accepted in 1993, and reviewed in 2003) states that the Board works to provide a vibrant public realm and to support the experience of public art and cultural events in parks.

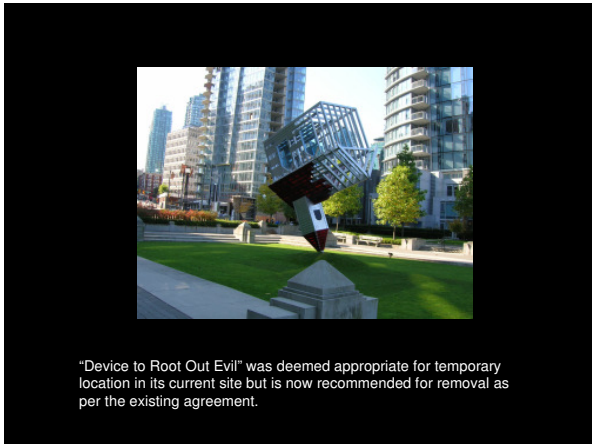
The Park Board's "Review Guidelines for the Donation of Public Art or Memorials" were established in 1988 and contain processes for accepting work permanently onto park land.

In 2005 the Park Board entered into an agreement with the Biennale Foundation which established the processes guiding the installation of temporary exhibitions on park land.

The Park Board does not have established processes at this time for the acceptance of long term temporary installations

Michel Goulet's "Echoes" has been proposed as a donation to the Park Board.

The site proposed for the permanent installation is one of those utilized for temporary exhibitions therefore the Foundation will work with staff to identify a 'replacement' location for the Biennale's remaining exhibitions.



Vancouver Biennale

In 2005 the Park Board entered into a contract with the Biennale Foundation for a series of 6 temporary sculpture exhibitions.

The agreement was grounded in Park Board Arts Policy objectives to support the experience of art in parks and on public response to a previous temporary exhibition.

The Biennale sculptures compliment other forms of public art in parks.

Vancouver International Sculpture Biennale

Recommendation

A) THAT the Board consult with the public on a proposal from the Biennale Foundation that some of the temporarily installed sculptures remain on park land beyond the originally agreed on 18 month period but not beyond September 2015.

B) THAT the Board direct staff to initiate the standard donation processes for the sculpture "Echoes" proposed by the Biennale for donation to the Park Board.

C) THAT the Board direct the Biennale to remove of the sculpture "Device to Root Out Evil" as per the terms of the original agreement.

Vancouver Board of Parks and Recreation | vancouverparks.ca

Stanley Park Hollow Tree

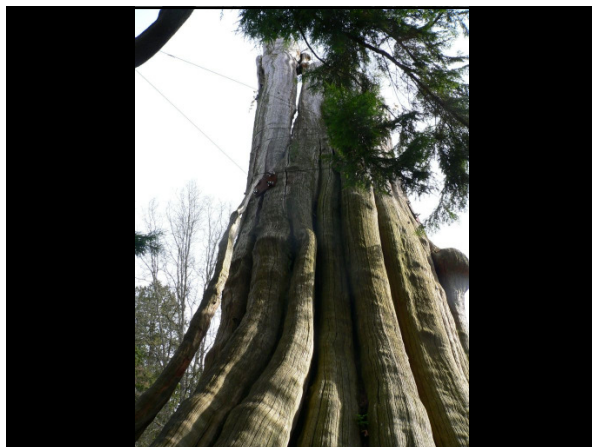
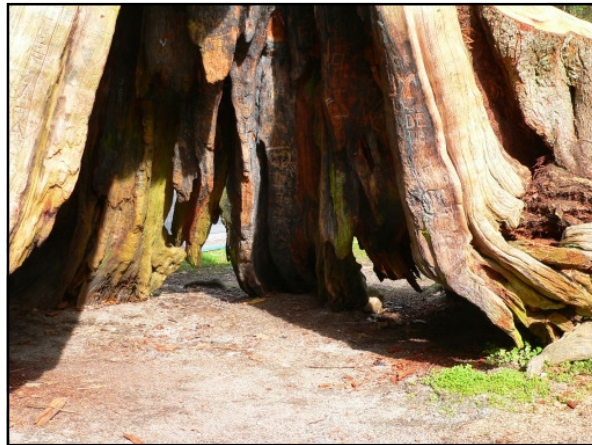
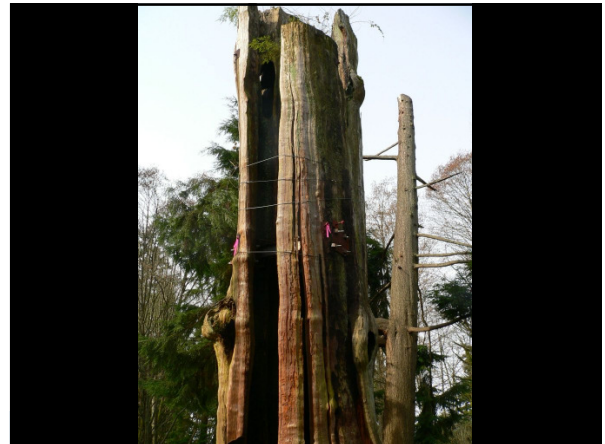
Recommendation

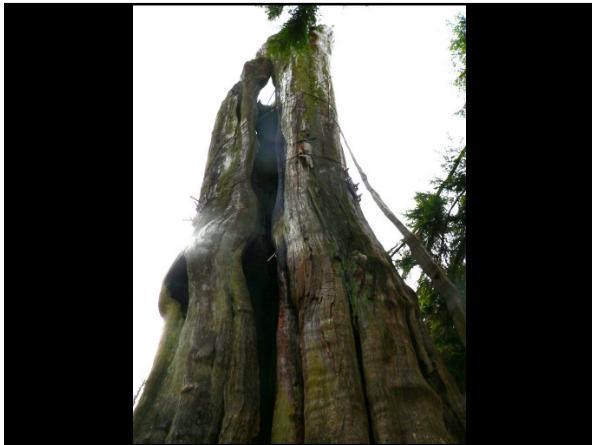
THAT the Board approve the taking down of the "Hollow Tree", as it has become a public safety concern.

Vancouver Board of Parks and Recreation | vancouverparks.ca



Vancouver Board of Parks and Recreation
Regular Board Meeting – March 10, 2008
Park Board Main Office - 2099 Beach Avenue





Stanley Park Hollow Tree

Recommendation

THAT the Board approve the taking down of the "Hollow Tree", as it has become a public safety concern.

Golf Business Consultant Contract Award

Recommendation

A) THAT the Board award the contract for the Golf Business Consultant to CK Golf Solutions at a fixed fee of \$157,770 plus \$34,730 for disbursements and allowances.

B) THAT no legal rights shall arise hereby, and none shall arise until the execution of the contemplated contract. The Board may rescind this resolution at any time up to the execution of the contemplated contract.

2008 Vancouver International Triathlon World Championships

Recommendation

A) THAT the Board approve the use of English Bay and Ceperley Park June 2 through June 8, 2008, the partial road closure of the western portion of Stanley Park on June 5th (6:00am-10:30am) and on June 6th (6:00am-10:30am), a full road closure of Stanley Park on June 7th (6:00am-12:00pm) and a partial road closure of Park Drive from Second Beach Pool to the Beach Avenue entrance on June 8th (6:30am to 6:30pm) for the 2008 Vancouver Triathlon World Championships.

B) THAT all arrangements will be to the satisfaction of the General Manager.

Vancouver Board of Parks and Recreation | vancouverparks.ca

Stanley Park Restoration Project Seawall Repair Consultant

Recommendation

A) THAT the Board retain AMEC Earth and Environmental Ltd. to provide consulting services for the repairs to the Stanley Park seawall;

B) THAT no legal rights or obligations will be created or arise by the Board's adoption of Recommendation A above unless and until such legal documents are executed.

Vancouver Board of Parks and Recreation | vancouverparks.ca

Stanley Park Restoration Legacy Project

Recommendation

THAT the Board retain AldrichPears Associates to develop an outdoor interpretive signage program for Stanley Park.

Vancouver Board of Parks and Recreation | vancouverparks.ca

Stanley Park Restoration Project Extension of Forestry Operations Contracts

Recommendation

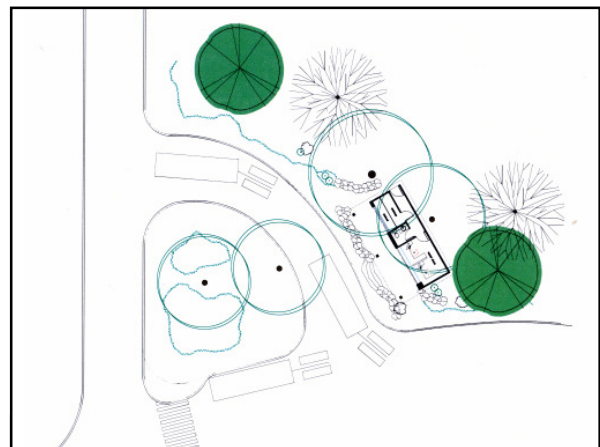
THAT the Board extend the forestry operations contracts as outlined in the report for work related to the Stanley Park Restoration Project by \$750,000.

Vancouver Board of Parks and Recreation | vancouverparks.ca


Vancouver Board of Parks and Recreation
Next Regular Board Meeting

April 14, 2008
Thunderbird Community Centre, 2311 Cassiar Street

Visit the Park Board web site at vancouverparks.ca



Vancouver Board of Parks and Recreation
Regular Board Meeting – March 10, 2008
Park Board Main Office - 2099 Beach Avenue

