

EXPLANATORY PLAN OF STATUTORY RIGHT OF WAY OVER A PORTION OF LOT A EXCEPT PART IN REFERENCE PLAN BCP9161, BLOCK 94, DISTRICT LOT 541, PLAN BCP8785.

PLAN EPP1757

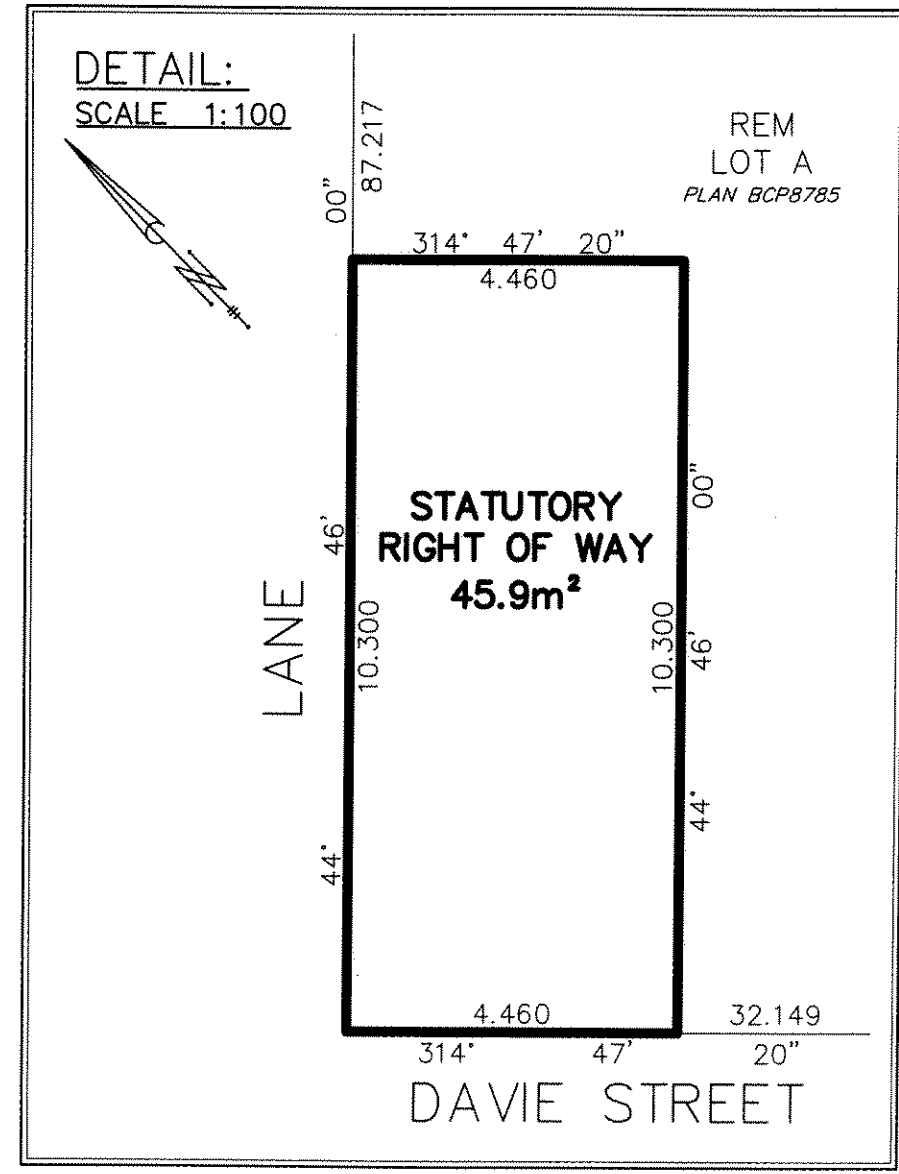
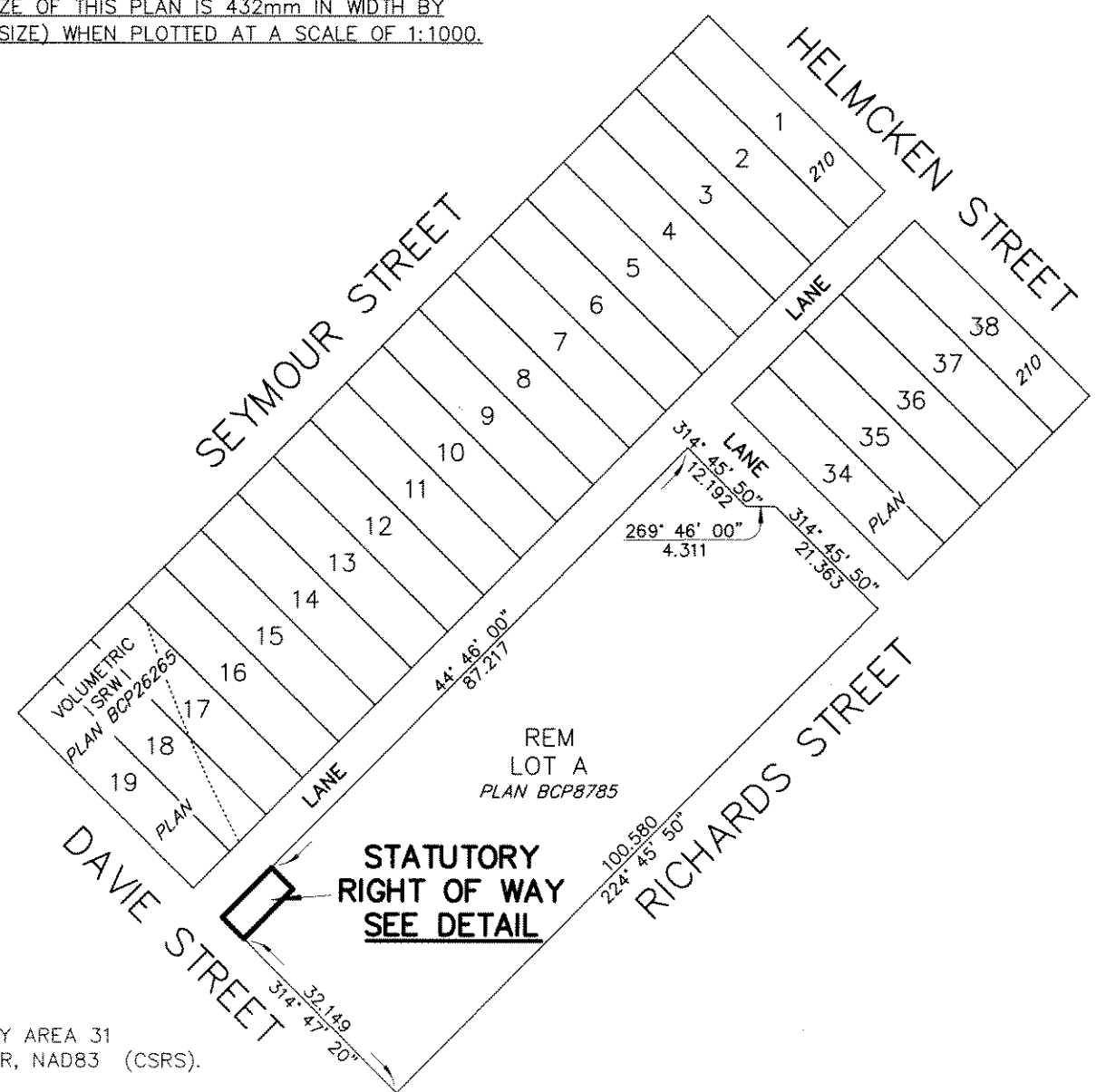
PURSUANT TO SECTION 99 (1) (e), LAND TITLE ACT.

BCGS 92G.025



ALL DISTANCES ARE IN METRES AND DECIMALS THEREOF.

THE INTENDED PLOT SIZE OF THIS PLAN IS 432mm IN WIDTH BY 280mm IN HEIGHT (B SIZE) WHEN PLOTTED AT A SCALE OF 1:1000.



INTEGRATED SURVEY AREA 31
CITY OF VANCOUVER, NAD83 (CSRS).

GRID BEARINGS ARE DERIVED
FROM PLAN BCP8785

THIS PLAN IS BASED ON THE FOLLOWING LAND
TITLE AND SURVEY AUTHORITY OF BC RECORDS:
PLAN BCP8785
PLAN BCP9161

DAVID W. PARKIN, BCLS