

Capital Budget for 2009

Recommendation

THAT the Board approve the 2009 Capital Budget of \$66,635,600, as described in this report and outlined in Appendix A, from the following funding sources:

- Capital from borrowing authority for Parks and Recreation: \$54,605,000;
- Capital from revenue for Parks and Recreation: \$2,735,000;
- City-Wide Development Cost Levies (DCL): \$1,925,000;
- Community Amenity Contribution (CAC) from Bayshore Gardens: \$300,000;
- Community Amenity Contribution (CAC) from 1100 West Georgia and 1221 West Georgia: \$450,000 (previously approved by Council on May 13, 2008);
- Curling Venue Post-Olympic Conversion Fund: \$6,000,000; and
- External funding from senior governments, non-profit partners and donations: \$620,600.

Capital Plan for 2009 - 2011

▪ Total approved in 2008:		\$91,375,000
▪ Adjustments since 2008:		
• Additional City Funding:	\$6,450,000	
• External Donations:	<u>\$620,600</u>	
		<u>\$7,070,600</u>
▪ Revised Total:		\$98,445,600
▪ Recommended for 2009:		<u>\$66,635,600</u>
▪ Remaining for 2010 and 2011:		\$31,810,000

Funding Sources for 2009	
TOTAL:	<u>\$66,635,600</u>
▪ Capital Plan from City:	\$57,340,000
• Borrowing authority (\$54,605,000);	
• Capital from revenue (\$2,735,000);	
▪ City-Wide Development Cost Levies (DCL):	\$1,925,000
▪ Community Amenity Contributions (CAC):	\$750,000
▪ Curling Venue Post-Olympic Conversion Fund:	\$6,000,000
▪ External funding:	\$620,600
Vancouver Board of Parks and Recreation vancouverparks.ca	

Program Funding for 2009	
TOTAL:	<u>\$66,635,600</u>
▪ Parks:	\$6,545,000
▪ Land Acquisition:	\$0
▪ Facilities:	\$57,535,600
▪ Street trees:	\$250,000
▪ Project management/overhead:	\$2,305,000
Vancouver Board of Parks and Recreation vancouverparks.ca	

High profile projects - parks

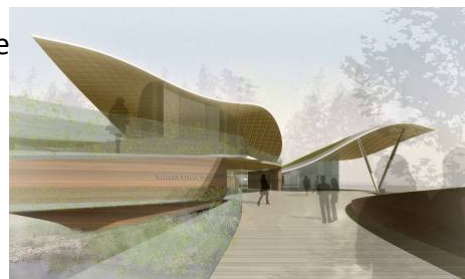
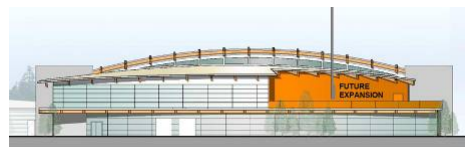
- Oppenheimer Park renewal
- Plans for Grandview & Norquay Parks
- 2 playground replacements
- 1 new playground
- Playfield upgrade at Moberley Park
- Repair tennis courts near Charleson
- Roads in Stanley and QE Parks
- Jericho Park Marginal Wharf
- 800-850 new street trees



Vancouver Board of Parks and Recreation | vancouverparks.ca

High profile projects - facilities

- Aquatic Centre at Hillcrest
- Killarney & Trout Lake Rinks
- Conversion of Curling Venue
- Trout Lake Community Centre
- Renfrew Pool change rooms
- VanDusen Garden buildings
- Nat Bailey Stadium renos



Vancouver Board of Parks and Recreation | vancouverparks.ca