



Date: May 30, 2014

TO: Board Members - Vancouver Park Board  
FROM: General Manager - Parks and Recreation  
SUBJECT: Proposed Trillium North Park Artists Garden

---

## RECOMMENDATION

*THAT the Board approve the new arts-focused community learning garden in Trillium North Park, with all details to the satisfaction of the General Manager; and*

*FURTHER THAT staff grant a 5 year license agreement with the EarthHand Gleaners Society to operate the community garden, with all terms consistent with the Community Garden Policy.*

## POLICY

The Trillium Park Master Plan was approved by the Board on April 4, 2012.

The Board endorsed Phase 1 of its new Strategic Plan in May 2012, including the strategic objectives of:

- Parks and recreation for all, including vibrant arts and culture experiences
- Leader in greening, including green stewardship
- Engaging people, including community participation, effective partnerships, productive collaborations, and valued volunteers and advocates.

A revised Community Garden Policy was approved by the Board in September 2005, which outlines the terms and conditions under which the Board will consider community gardens to be operated on park lands.

The Board adopted a renewed Arts Policy in December 2003, which states that the Park Board will provide a vibrant public realm and support the experience of public art and cultural events in parks.

## BACKGROUND

Staff recommends approval of this new arts-focused community learning garden in Trillium Park, in partnership with the EarthHand Gleaners Society. The partnership has been developed alongside the design and construction of Trillium Park.

The EarthHand Gleaners Society is an arts based non-profit organisation that fosters ecological diversity and community. Their intention is to:

- Develop environmental education by fostering hand-based skill development through the creative arts;
- Pursue creative ways of reducing green waste through up-purposing of waste stream materials and invasive plants.

This proposal meets the Park Board Community Garden Policy in the following ways:

- Will include (a) community development program(s) that encourages the involvement of schools, youth groups and citizens who do not have an assigned plot in gardening activities.
- Will create and maintain an organic community garden that will increase the ecological biodiversity of Vancouver.
- Will produce plant material for the personal use of members, as well as for shared benefit of the community.

## **DISCUSSION**

The north section of Trillium Park is in the final phase of construction, and will open to the public in summer 2014. The park design features a broad range of passive uses designed to complement the two sport fields to the south. Trillium North includes play spaces, an amphitheatre, exhibit and programming space, a workspace and storage area for artists, a great lawn area, on-site stormwater management, native plantings, plants used for art, nature play, and other features. The design of the park followed a comprehensive public engagement process, through which strong support for art and performance spaces was indicated by stakeholders. Staff explored an artist in residence program, arts/culture workshops, community stewardship programs, programming/exhibit space, celebrations, community festivals and a call for local artists for art displays for this park.

As the consultation, design, and construction of the park proceeded, staff worked with neighbourhood-based artists and art-focused organisations to further develop these concepts. Members of the EarthHand Gleaners Society have worked closely with Park Board planning, development and operations staff to develop a concept plan, planting design, and operations framework to enable artists to garden a portion of the site in order to grow plant materials that will be used for production of art works as well as for workshops, exhibitions and celebrations.

The Park Board has provided some assistance to get the garden established including: installation of plants; provision of storage and work spaces; water access; and some gardening tools. The gardeners are responsible for all other ongoing costs, and for all governance, maintenance and operations.

## **PUBLIC CONSULTATION**

Extensive public consultation for the design of Trillium North Park was held from October 2011 - April 2012. This included a focus group of community stakeholders, two open houses, and three working group meetings as well as notification of neighbours through flyers delivered within a 2-block radius of the site, signage on-site and in neighbouring community facilities, email to the project contact list, and social media. Numerous park features were tested for their level of support, with arts-focused spaces generating a great deal of interest, excitement and support amongst stakeholders. The concept of an arts focussed garden was included in this public dialogue and supported by the working group.

## SUMMARY

The proposed garden furthers the objectives of the Park Board's Strategic Plan, the Park Board Arts Policy, and the Greenest City Action Plan, and complies with the Community Garden Policy. The garden will build community connections, engage residents, provide learning opportunities, and demonstrate community-engaged environmental art practices. Staff recommends that the Board approve this proposal for the new community learning garden at Trillium North Park.

General Manager's Office  
Vancouver Board of Parks and Recreation  
Vancouver, BC

Prepared by:  
Parks, Vancouver Board of Parks and Recreation  
/LC

## **Appendix A: Design for Trillium North Park Artists Garden**



*Figure 1: Location of proposed community learning garden in Trillium North Park*

This proposed garden (Figure 2) includes:

- Demonstration plots for teaching and children's programming
- Native Pollinator meadow
- 100% collaborative gardening; no personal garden plots
- Shared maintenance of planted beds with Park Operations
- Focused plantings of British Columbia's native plant species traditionally used by First People for various hand technologies.
- Green waste area

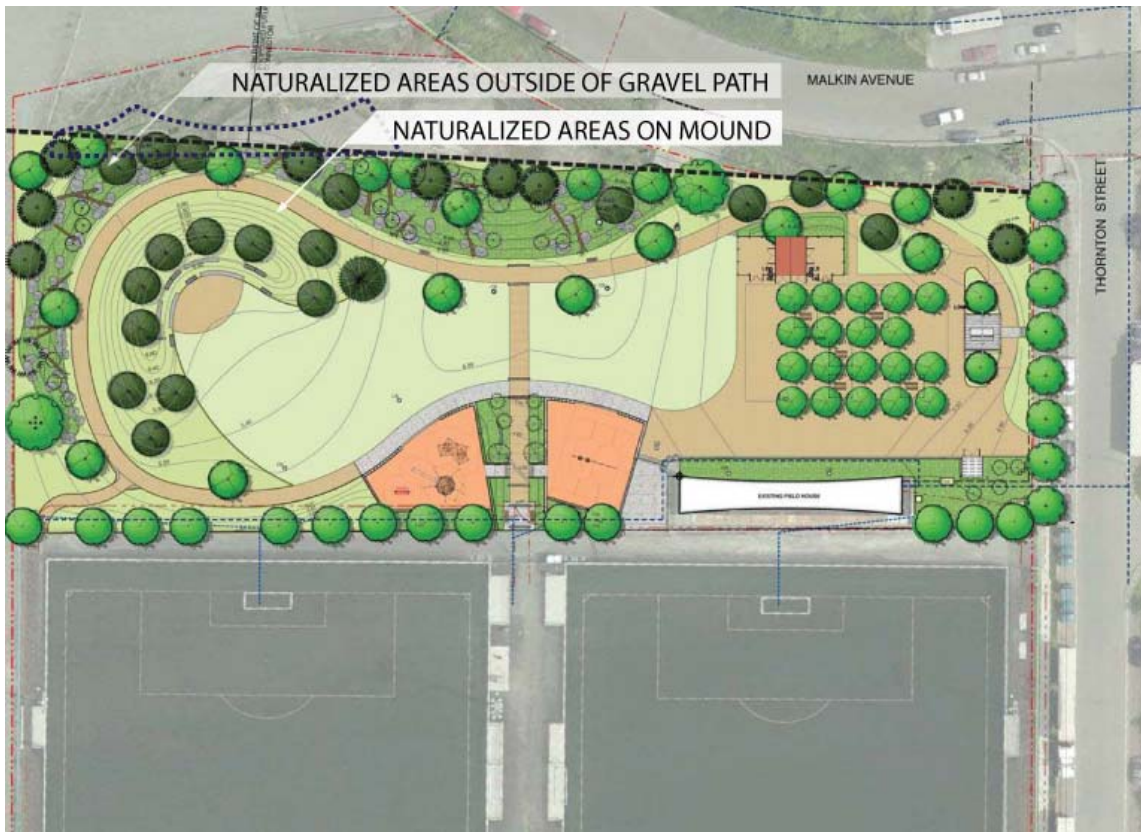


Figure 2: Proposed Trillium North Park community learning garden design