



# Vancouver Board of Parks and Recreation

## Field House Activation Strategy Staff/Board Briefing

November 2, 2015

Visit the Park Board website at: [vancouverparks.ca](http://vancouverparks.ca)



# Agenda

1. Purpose
2. Current State
3. Policy Framework
4. Artist Studio Residencies Review
5. Field House Activation Strategy
6. Next Steps



# Purpose

**To develop a field house activation strategy that activates park space with community programming and maximizes use of facilities.**

## **History:**

- 71 field houses in Vancouver parks
- Historical purpose of providing live-in accommodations for park caretakers and concessionaires

## **Park Board motion:**

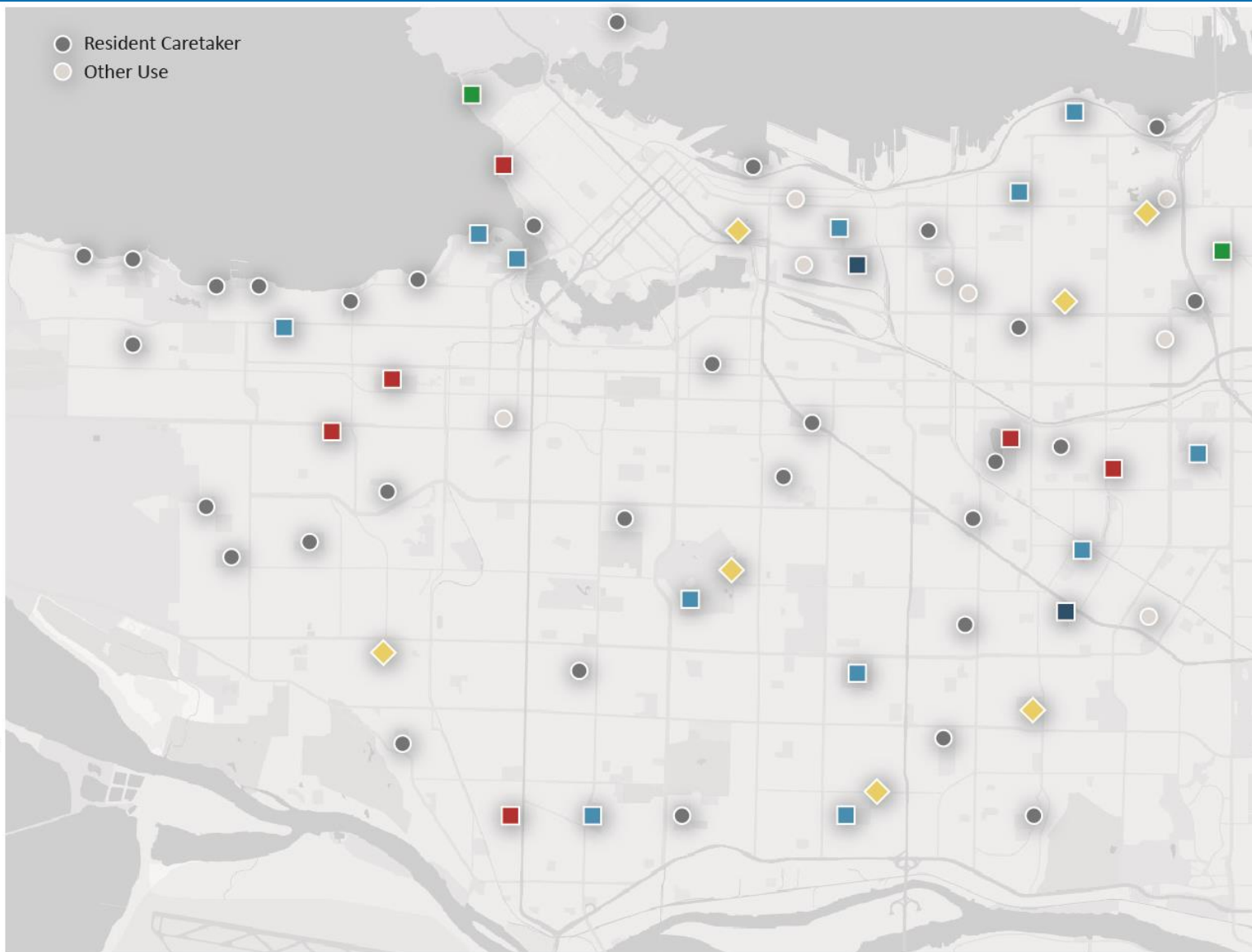
June 27, 2011 - The Board directed staff to “explore the potential use of any surplus facilities, such as closed field houses, for re-purposing” in order to benefit people and communities.

# Current State



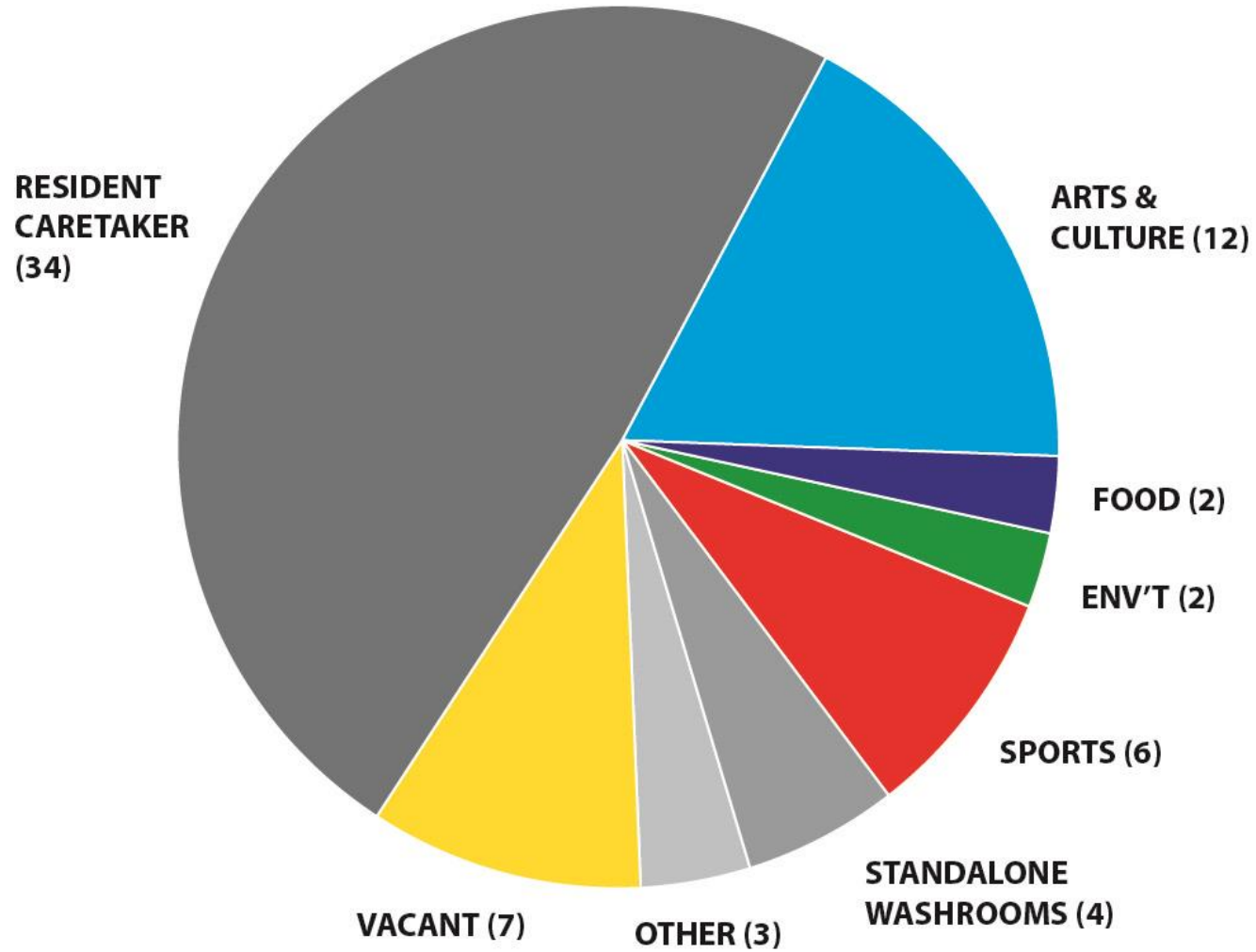
# Current uses of facilities

- ◆ **VACANT**
  - Andy Livingstone Park
  - Clinton Park\*
  - Elm Park\*
  - Hastings Community Park\*
  - Nanaimo Park\*
  - Riley Park\*
  - Ross Park\*
  
- **SPORTS**
  - Carnarvon Park
  - Connaught Park
  - English Bay Beach Park
  - John Hendry Park
  - Renfrew Community Park
  - Shannon Park
  
- **ARTS & CULTURE**
  - Burrard View Park
  - Falaise Park
  - Hadden Park
  - MacLean Park
  - McBride Park
  - Memorial South Park
  - Moberly Park
  - Oak Park
  - Pandora Park
  - Queen Elizabeth Park
  - Slocan Park
  - Vanier Park - Burrard Marina
  
- **FOOD**
  - Norquay Park
  - Strathcona Park
  
- **ENVIRONMENT**
  - Adanac Park\*
  - Stanley Park A-Frame\*

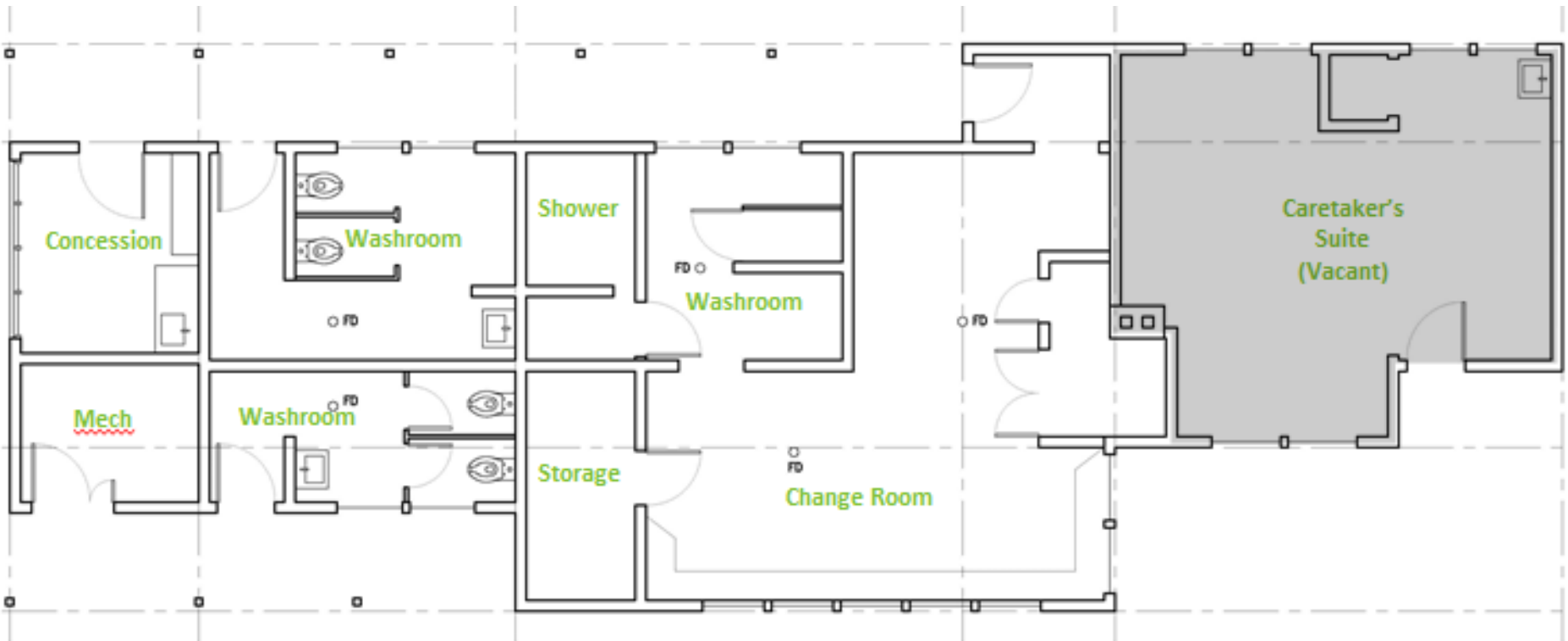


\* - Field houses participating in upcoming call

# Current State



## Floor Plan of Typical Field House





# 2014 - Artist Studio Residencies Review

**350**

HOURS OF  
COMMUNITY  
ENGAGEMENT  
PER RESIDENCY

**3000**

PARTICIPANTS  
PER RESIDENCY

**25**

YOUTH-FOCUSED  
PROJECTS

**64**

ADULT & SENIORS  
PROJECTS

**50**

ARTISTS IN 12  
FIELD HOUSES

**1500**

AUDIENCE  
PARTICIPANTS

**141**

ALL AGES  
PROJECTS



# 2014 - Artist Studio Residencies Review



## Mark Haney - Falaise Park

Local composer and double-bassist, used the field house for daily rehearsal. The residency culminated in a new composition created from stories of neighbourhood veterans performed on Remembrance Day.



## The Bird Project - QE Park

Artists Geneviève Raiche-Savoie and Jesse Garbe produce art that raises awareness about issues concerning local and migratory birds as part of Vancouver's Bird Friendly Strategy, including guided walks and seeing spots installations.



# Field House Activation Strategy

## Goal

- To activate underutilized field house spaces in order to create place-based hubs of activity throughout our Parks system.

## Objectives

- Create and manage a field house activation program that is transparent, fair and clearly communicated to partners across the city.
- Support strategic objectives in the areas of sport, arts and culture, local food and environment.
- Develop strong, meaningful partnerships with community organizations and individuals.
- Ensure agreements are in place to address terms of use and risk management.



Vancouver Board of Parks and Recreation

## Arts Policy



Vancouver Board of Parks and Recreation  
2099 Beach Avenue, Vancouver, British Columbia, Canada V6G 1Z4  
Telephone: (604) 257-8400 Fax: (604) 257-8427  
Copyright © 2004 Vancouver Board of Parks and Recreation

- THE LOCAL FOOD ASSETS TASK FORCE -



THE LOCAL FOOD ACTION PLAN  
OF THE VANCOUVER PARK BOARD



JULY 2013





# Project Context

## Challenges

- Range of current formal & informal uses; caretakers, sports organizations, art, food and environment residencies, summer playground programs
- No clearly defined process for equitable allocation or access

## Opportunities

- A comprehensive strategy for field house allocation across priority areas, with clear and consistent terms for license agreements
- Respond to community demand for use of public facilities in parks to support delivery of their mandates



# Allocation Priorities

- Community benefits from use of space
- Benefits to project proponents
- Strong partners with capacity and access to appropriate resources
- Appropriateness and fairness of proposed use for the available space, park, and neighbourhood
- Scalability of program to other neighbourhoods
- Potential for strong collaborations across themes



# Types of Field House Activations

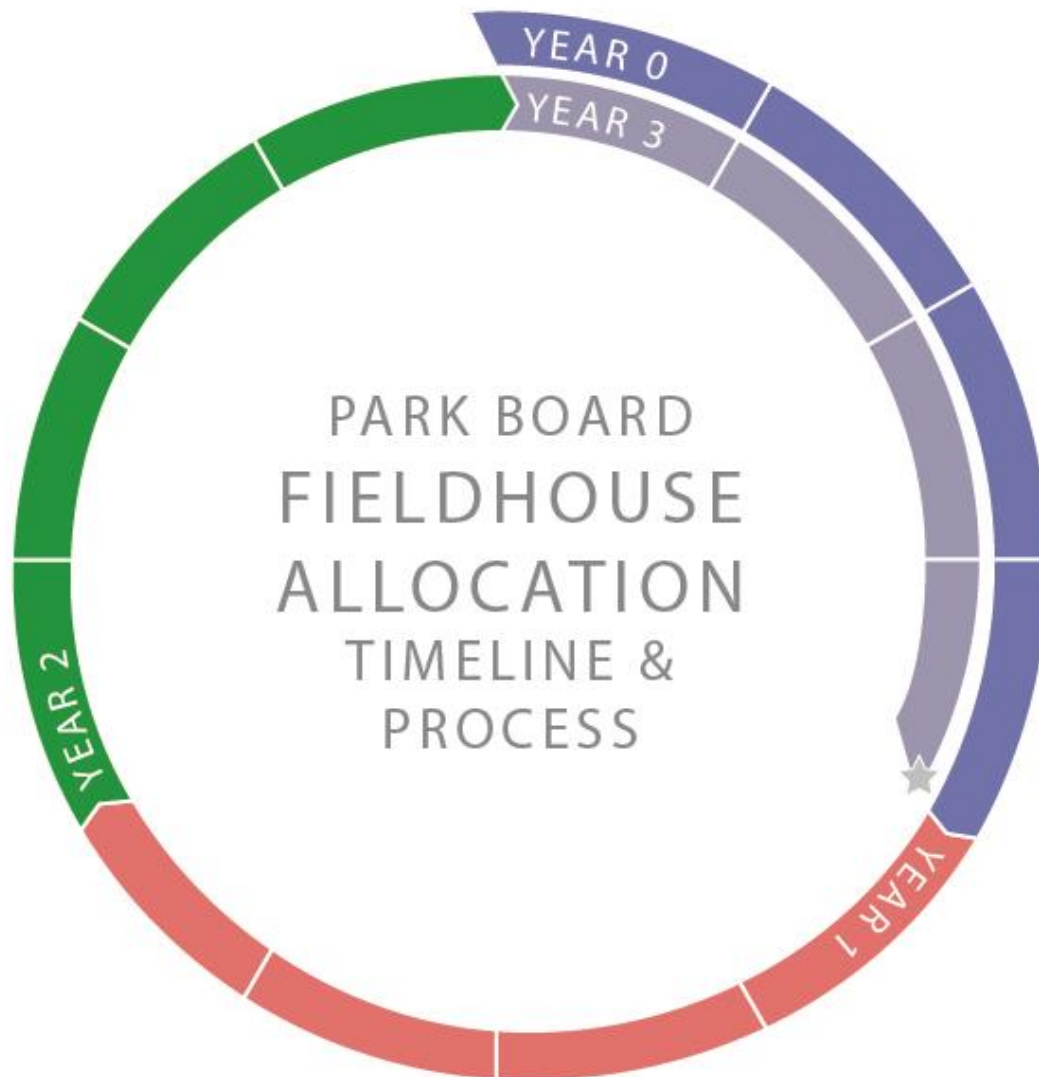
## **Priority Activations: Program is based on an exchange of space for community engagement**

- Purpose is to provide accessible, low cost space in exchange for highly community engaged programming
- Utilities such as electricity, natural gas and water provided by Park Board
- Operating costs such as phone, data, cleaning, programming provided by the organization

## **Alternative Activations: Program based on rent model**

- Purpose is to provide accessible, reasonably priced space to support community partners who have some financial means to pay
- Must demonstrate community benefit

# Planning and Allocation Process



## YEAR 0

- update inventory
- issue RFEOI
- conduct open houses

## YEAR 1

- complete licence agreement
- finalise work plan
- facilitate move-in

## EACH YEAR

- collect quarterly and annual reports

## YEAR 3 ★

- collect final reports
- non-returning occupants vacate the field house

# Proposed Next Steps

- Issue Request for Expressions of Interest (RFEOI)
  - 2 Year Term 2016-2017
- Application Review & Evaluation by staff
- Update to Board on selected residencies
- Organizations begin operations 2016





# Currently Available for Community Use

- Adanac Park
- Hastings Community Park
- Stanley Park A-Frame
- Elm Park
- Nanaimo Park
- Riley Park
- Ross Park
- Clinton Park





# Planning and Allocation Process

## Field House Strategy Development (2013-2015)

### Project Sponsor

- Manager, Citywide Recreation
- Centralized coordination and decision making

### Task Team

- Park Operations - Chad Cowles
- Revenue Services - Gordon Barber, Ken Maguire
- Sport - Darren Peterson
- Arts and Culture - jil p. weaving, Danita Noyes
- Local Food and Environment - Jason Hsieh, Becky Till
- Business Development - Octavio Silva



# Capital and Operating Budgets

- Capital budget specifically allocated for field house renovations to upgrade the space and add new features for the proposed use.
- Operating funds for maintenance and repairing of existing structures and fixtures.

# Questions?





VANCOUVER

BOARD OF PARKS  
AND RECREATION