



February 26, 2016

TO: Park Board Chair and Commissioners
FROM: General Manager - Vancouver Board of Parks and Recreation
SUBJECT: 5th & Pine Pop-up Park - Concept Plan

RECOMMENDATION

THAT the Park Board approve the modified concept plan for a temporary (“pop up”) neighbourhood park located on the southeast corner of West 5th Avenue and Pine Street.

POLICY

The Board approves major changes in Vancouver parks including the design and development of parks.

BACKGROUND

The following Park Board and City documents provide the rationale for the park concept plan:

Park Board Strategic Plan (2012): Includes five strategic directions, one of which is Greening the Park Board. The plan states that the “preservation and enhancement of the natural environment is a core responsibility of the Park Board” and that the Board “will develop sustainable policies and practices that achieve environmental objectives while meeting the needs of the community”. Additionally, strategic objectives for improved inclusivity and accessibility, flexible and functional facilities, and sustainable design are relevant.

Park Board Biodiversity Strategy (2016): Guides the Park Board’s ongoing work to protect, enhance, and restore biodiversity throughout the park system.

Rewilding Action Plan (2014): Supports a broader role for environmental education and stewardship in parks, particularly for children.

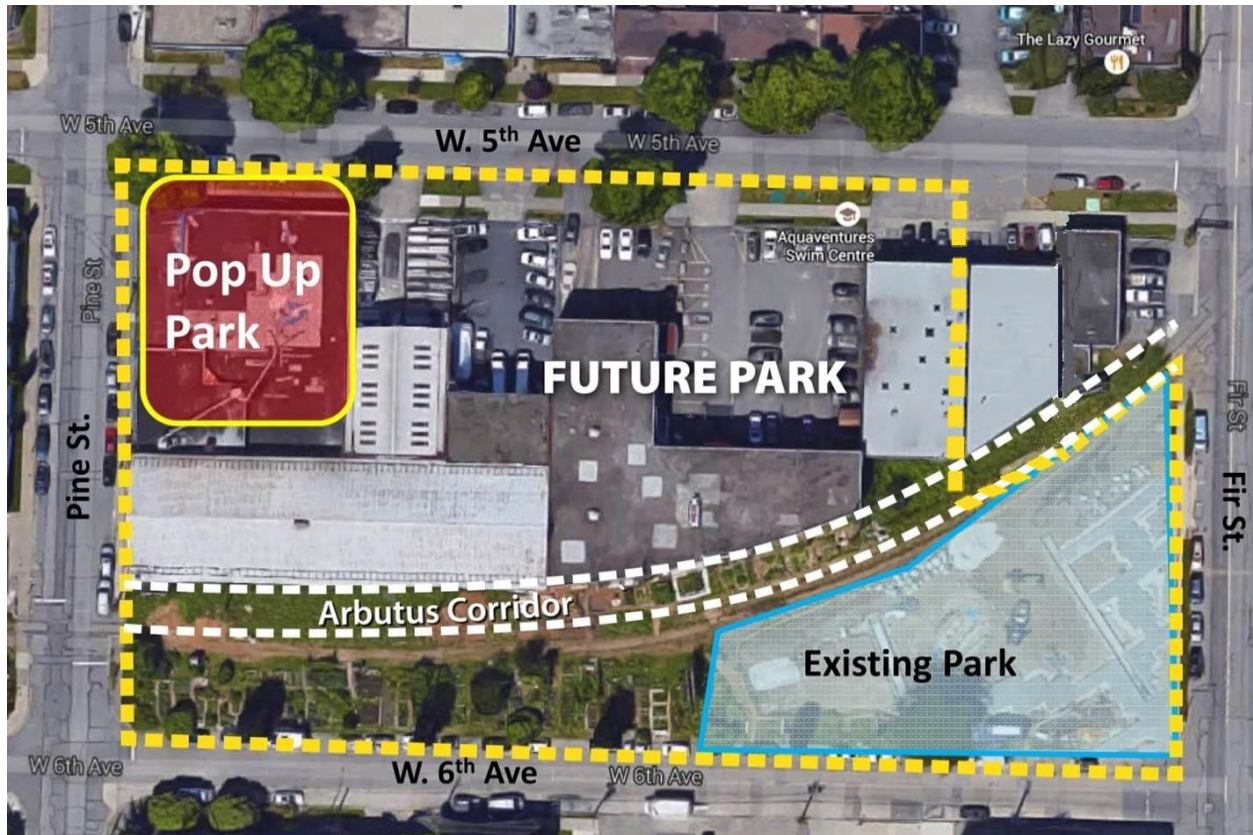
Bird Strategy (2015): Celebrates the importance of birds in Vancouver, and provides voluntary landscape and architectural guidelines to enhance urban bird habitats.

Greenest City Action Plan (2010): Sets two targets to improve access to nature (150,000 trees and 5 min walk to greenspace).

The “pop up park” or temporary park under discussion is located at the corner of Pine Street in the 1600 block of West 5th Ave (see figure on following page). It is 0.3 acre (0.13 ha) in size and located in the same block as the recently completed park at West 6th Ave and Fir Street. The block is bisected into a northern and southern portion by the CP Rail corridor. The surrounding Burrard Slopes neighbourhood is a mix of light industrial uses and multi-family homes and is trending toward mid-level multi-family buildings.

In response to the neighbourhood change and in anticipation of increased density in the immediate area, the majority of the properties within this block have been acquired to develop a future neighbourhood park. The site at West 5th Avenue and Pine Street became available for park use after a building fire and demolition in 2014, and presents an opportunity to develop a pop-up park until the planning process for the block-wide park begins. Work on the larger park is targeted for the next Capital Plan 2019-2022.

LOCATION



A landscape architect was retained in 2015 to develop a concept plan for the pop-up park containing amenities such as:

- outdoor seating and long tables for group meals;
- accessible pathways;
- plant materials for pollinators in the form of a colourful wildflower meadow;
- the inclusion of an edible plants such as berry-producing shrubs; and
- demonstration of sustainability such as the reuse and inclusion of found or waste materials and rainwater capture.

PUBLIC ENGAGEMENT

A draft concept plan was presented to the public for comment via an on-line questionnaire (TalkVancouver) from August 17 to September 15, 2015. A copy of the draft concept plan is attached as Appendix A to this report.

The survey period was accompanied by on-site information signs and Park Board social media and **202** people responded to the survey. The majority of respondents lived in the Burrard Slopes neighbourhood (51%) or were occasional visitors to the area (37%).

When asked “*What do you think of the concept plan for the Fifth and Pine pop-up park*”, 38% said they “really liked it” and 48% said they “liked it”. Only 14% responded with neutral or negative opinions.

The main comments were requests for additional seating, community gardens and food production, lighting for safe nighttime use, drinking water, and bike racks.

SUMMARY

The concept plan was modified to address the public requests and now includes:

- more seating including seating walls and perimeter benches;
- bike racks made from recycled materials; and
- bird and bee houses to enhance the pollinator garden.

The plan layout was also amended to suit the constructability of gabion walls, which will be built using recycled materials such as old unit pavers, bricks, stone, and timber collected from works yards and demolition sites. The harvest tables will be made from large fir timbers milled from a tree that recently fell in Stanley Park.

Urban agriculture plots were not added to the temporary park since there is a significant community garden within the adjacent railway corridor, and garden plots were included in the park at 6th and Fir. The site will include edible materials such as blueberries and other berry producing shrubs to provide food for park visitors and wildlife alike. Staff will explore the addition of lighting through the detailed design process. There is ambient light from the street and electrical services may not be available until the full park is built.

The modified concept plan is attached as Appendix B to this report.

Another community engagement opportunity for the project is a “planting day” where residents are encouraged to attend the park opening and help plant the pollinator garden. Staff are also exploring partnerships with educational collaborators like CityStudio for the design and construction of the bird and bee houses.

PROJECT SCHEDULE AND BUDGET

Should the Park Board approve the modified concept plan, construction documents for this project will be prepared by staff and tendered for construction in April, with completion in the fall of 2016. The preliminary construction estimate for the project is \$175,000. Information signs about the project will be posted in the park, and the project website will be updated throughout the year to highlight key milestones for interested residents.

CONCLUSION

The modified concept plan for the Park Board’s first ‘Pop-Up Park’ supports the Biodiversity Strategy and multiple Park Board strategic objectives. The plan is supported by the local

community, and if the Board approves, staff will advance the concept plan through detailed design and construction, and open this new park to the public in late 2016

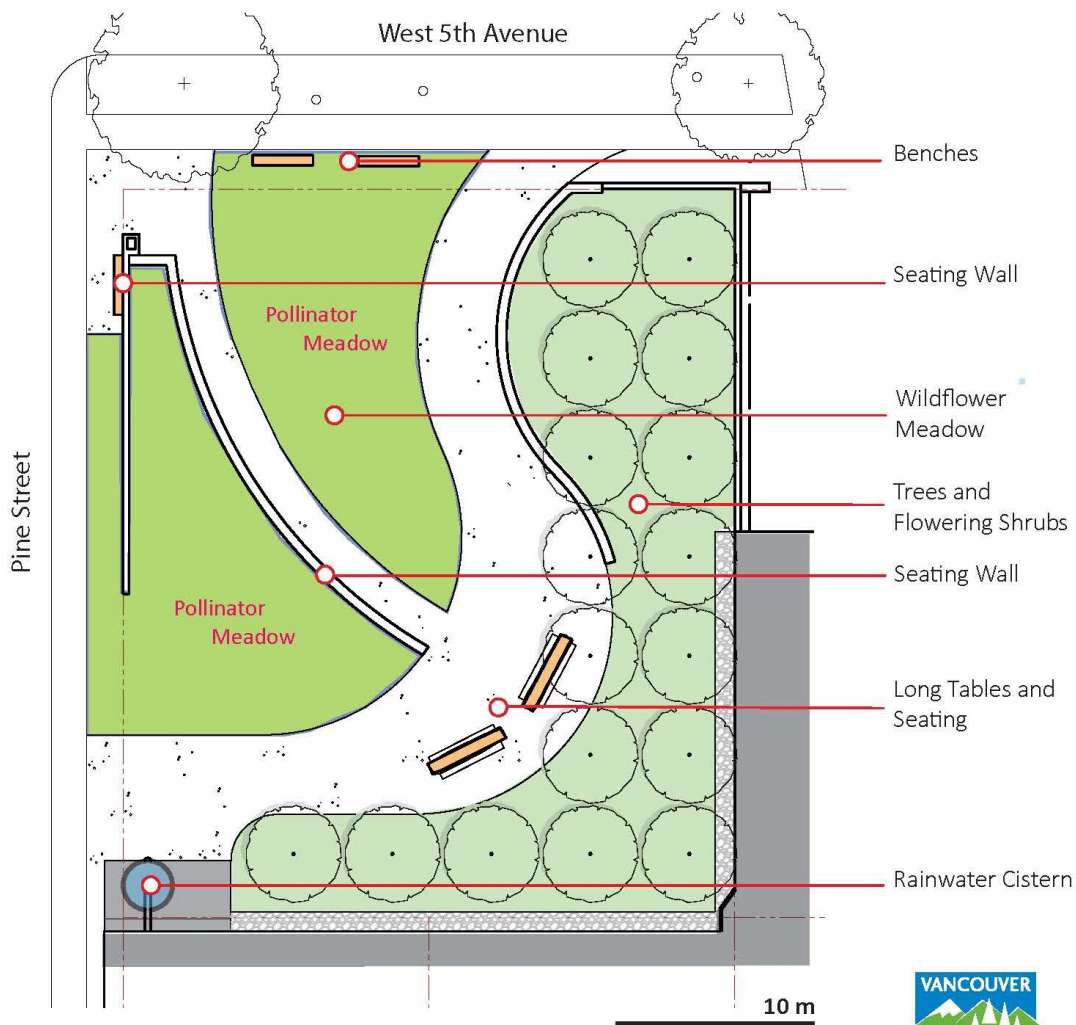
General Manager's Office
Vancouver Board of Parks and Recreation
Vancouver, BC

Prepared by:
Alex Man-Bourdon, Park Development & Nick Page, Park Planning and Research
/amb/np/tkm/jk/

5th & Pine Pop-up Park - Concept Plan

Fifth and Pine Pop Up Park!

CONCEPT PLAN



The Vancouver Board of Parks and Recreation maintains 240 parks and 40 major facilities throughout the City of Vancouver. The Park Board's mission is to provide, preserve and advocate for parks and recreation services to benefit all people, communities and the environment. For more information please visit vancouver.ca

5th & Pine Pop-up Park - Revised Concept Plan

