



Synthetic Turf Playing Field New Site Options

Park Board Committee Meeting
October 2, 2017



1. Recommendation
2. Background: Strategic Alignment
3. Background: Synthetic Turf Field Facts
4. Background: Siting Criteria and Desirable future sites
5. Priority Sites for Future Consideration

6. Current Options:
 - a. Beaconsfield Park
 - b. Clinton Park
 - c. Sir Winston Churchill Secondary School
7. Next Steps
8. Summary

The purpose of this presentation is to review the proposed siting options for a new synthetic turf playing field in Vancouver.

Background – Strategic Plan Alignment



Van Play

- Provision of services and facilities based on a system-wide needs assessment and on principles of equity, access and inclusion.



Park Board Strategic Plan

- Well Managed Infrastructure, quality fields built for low maintenance and durability.

Vancouver Sport for Life Strategy

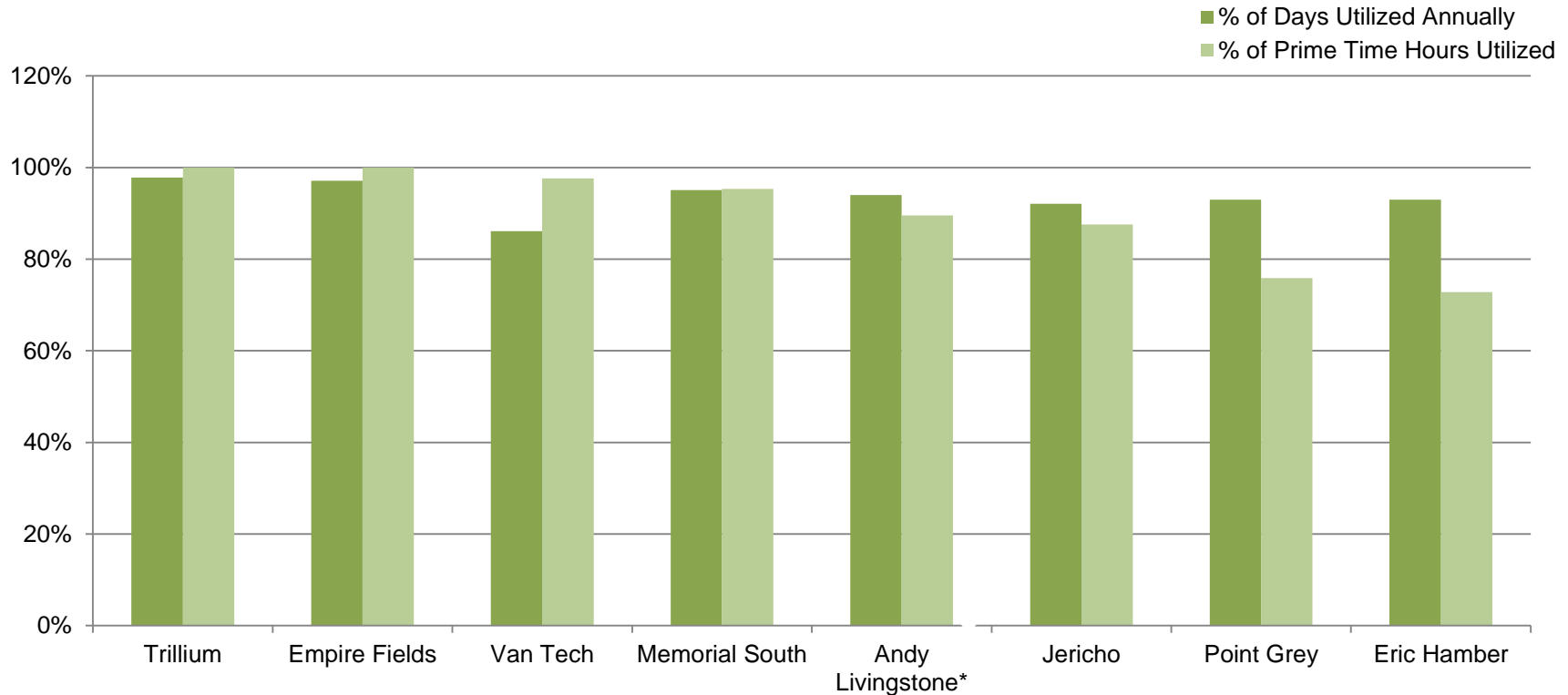
- Quality facilities for participation and performance



- First field build at Oak Meadows Park in 1987
- Currently 11 full size synthetic fields in the VPB inventory
- Vancouver Field Sport Federation and Vancouver Sport Network support the inventory and its growth
- Average life of a synthetic field surface is 10 years
- Grass fields provide maximum 12-14 playable hours/week; synthetic turf fields provide over 50hrs/week during busy months.
- Synthetic turf field usage averages over 90% year-round.

Background - Synthetic Field Utilization Rates 2016/17

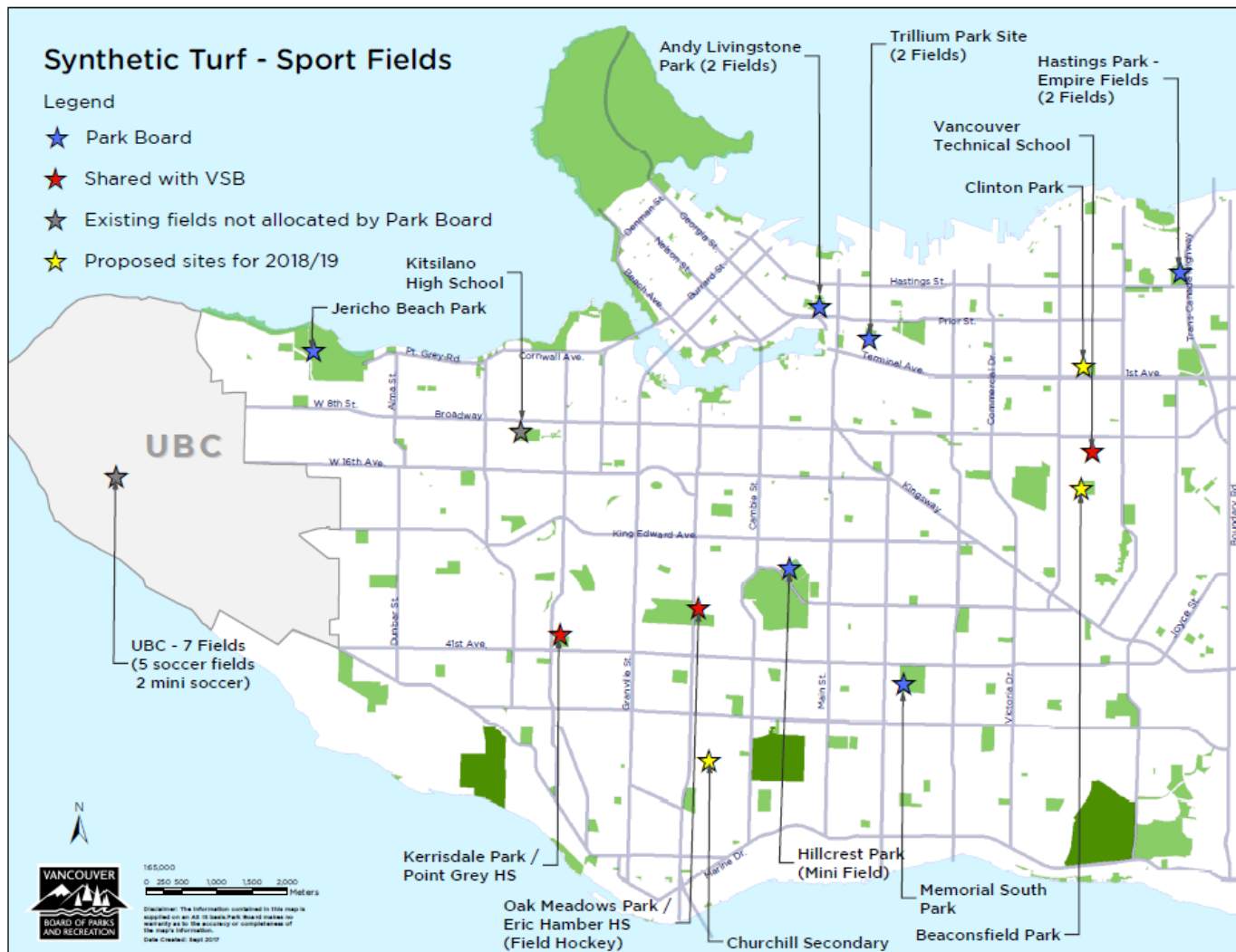
90% Average Utilization Rate Across All Fields



Synthetic Turf - Sport Fields

Legend

- ★ Park Board
- ★ Shared with VSB
- ★ Existing fields not allocated by Park Board
- ★ Proposed sites for 2018/19



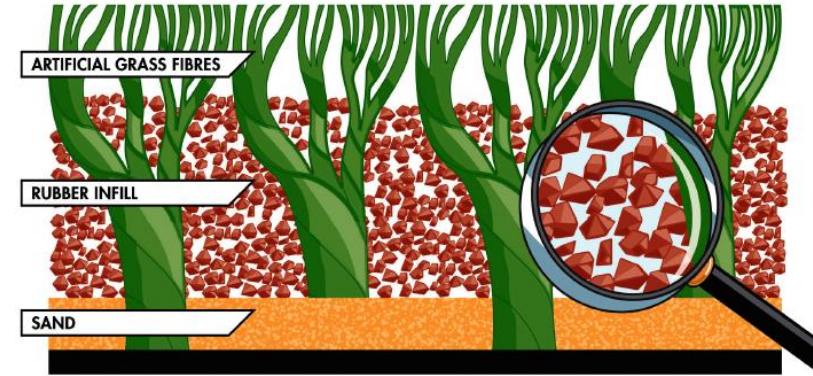
Background – Synthetic Fields Inventory



Park Location	Year Open	Comments	Replacement Year (Target)
Oak Meadows Park (Eric Hamber Secondary School)	1987/ 2003	2003, 2016 replaced (field hockey turf)	2026
Kerrisdale Park (Point Grey Secondary School)	2006	Replaced in 2016	2026
Vancouver Technical School	2008	Goal and centre field wear noted	2019
Andy Livingstone	1995/ 2009	Turf surface replaced in 2009 drainage issues	2019 (or coordinated with new parks and renewals)
Jericho Beach Park West Field	2010		2020
Memorial South West Field	2010		2020
Trillium Park Site (2 fields)	2010		2020
Hastings Park – Empire Fields (2 Fields)	2015		2025
Hillcrest Park	2016	Youth Field	2026

Background – Types of synthetic fields

- No infill, short pile (field at Oak Meadows Park)
- Crumb rubber and sand (9 Park Board fields)
- Thermoplastic elastomer (TPE) infill (field at Kerrisdale)
- Ethylene Propylene Diene Rubber infill (EPDM)
- Organic (coconut fiber and/or cork blend)



Source: www.wellesley.ma.gov



Photo 1: Crumb rubber Source: tbo.com



Photo 2: TPE Source: www.tpeinfill.com



Photo 3: Cork & Coconut Fiber



Photo 4: Cork

Background – Siting Criteria

- Level and stable ground
- Protect existing trees
- Support from local sport organization(s)
- Minimized impact to adjacent residents
- Maximized increase in playing capacity
- Proximity to a secondary school
- Good service distribution



SITES – Constraints and Opportunities as of August 2017 (received Aug 30/17)

Sites ruled out

- Jericho
- Prince of Wales
- Kingscrest

Sites that are not available this round

- Britannia – in current master planning process (unknown timeline)
- Oak Park – in planning process for Marpole (2-3 yrs?)

Future sites

- East Fraserlands – still no date, but getting closer

Sites on current T/F strategy list (plus all fields with ovals)

- Van Tech Oval
- Camosun

SITES – Constraints and Opportunities as of August 2017 (received Aug 30/17)

Sites viable for consideration this round

- VPB – Park Sites
 - Beaconsfield
 - Killarney
 - Rupert Park
- VSB – Elementary Schools
 - Southlands (small)
 - Kerrisdale South
 - Queen Mary
- VSB – Secondary Schools
 - Churchill
 - Killarney
 - VanTech South

Park Board Staff Review

VPB – Park Sites

- Beaconsfield – under consideration
- Killarney – priority future site
- Rupert Park – existing field is Grade A, lacks transit access and parking.

VSB – Secondary Schools (ideally would like a synthetic turf field at every high school)

- Churchill – under consideration
- Killarney – priority future site
- VanTech South – priority future site

VSB – Elementary Schools (not a top choice for Vancouver School Board)

- Southlands (small) – site could not fit a full size field
- Kerrisdale South – site could not fit a full size field
- Queen Mary – previously considered, close residential context

- Killarney
 - Master plan required to look at Seniors Centre, school seismic upgrade, outcomes of VanSplash Aquatic Strategy, and the Track and Field Strategy.
 - Potential site for up to two synthetic turf fields.
- Oak Park
 - Master plan required to consider Community Centre redevelopment.
- Vancouver Technical School Twinning
 - Awaiting outcome of the Track and Field Strategy.
 - More information needed from VSB about future needs for southeast corner of site.
- Strathcona Park
 - Awaiting further details of the False Creek Flats Plan implementation and potential new transportation projects in the neighbourhood.



Current Options

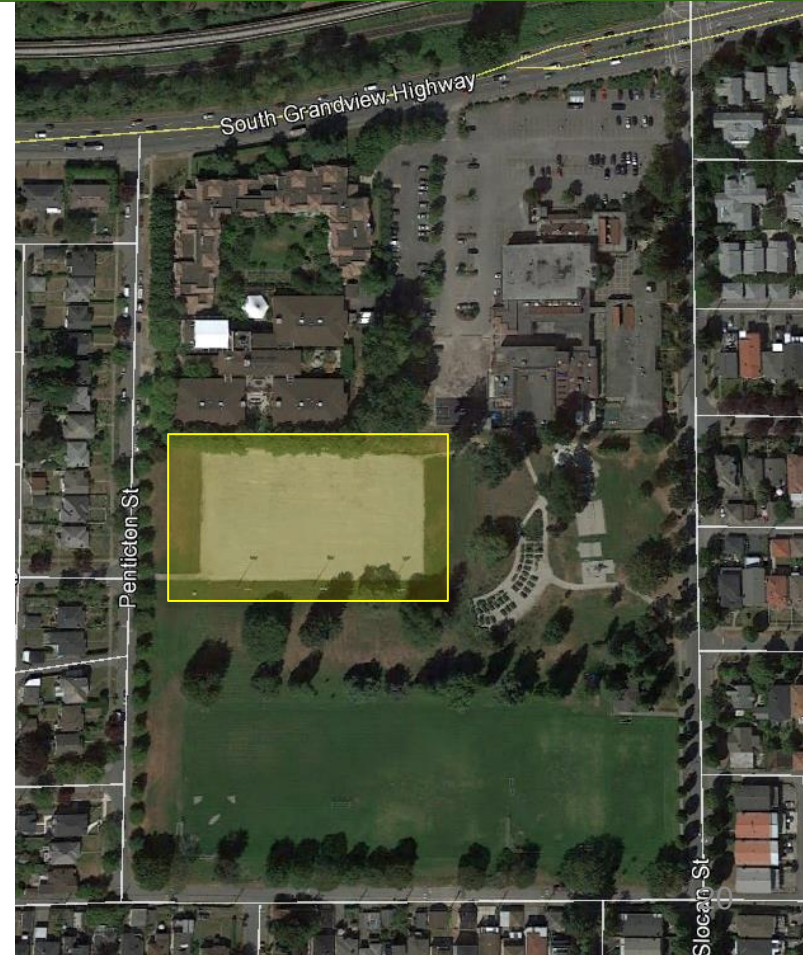


Beaconsfield Park



Background – Beaconsfield Park

- Located in East Vancouver, bound by Pentiction Street and Slocan Street, and the alley to the north behind 18th Ave.
- 4.4 hectare neighbourhood park
 - playground and community garden
 - 1 baseball diamond
 - 3 grass fields
 - 1 all-weather gravel field with lights
 - field house with washroom
- Adjacent to the Italian Cultural Centre.



Background – Beaconsfield Park

- + Existing lights & washrooms
- + Support from the adjacent Italian Cultural Centre
- + High demand area
- + Supports a nexus of fields close enough to provide a tournament centre
- + 8min walk to Skytrain
- Potential geotechnical works required
- Potential drainage concerns
- Parking needs





Clinton Park

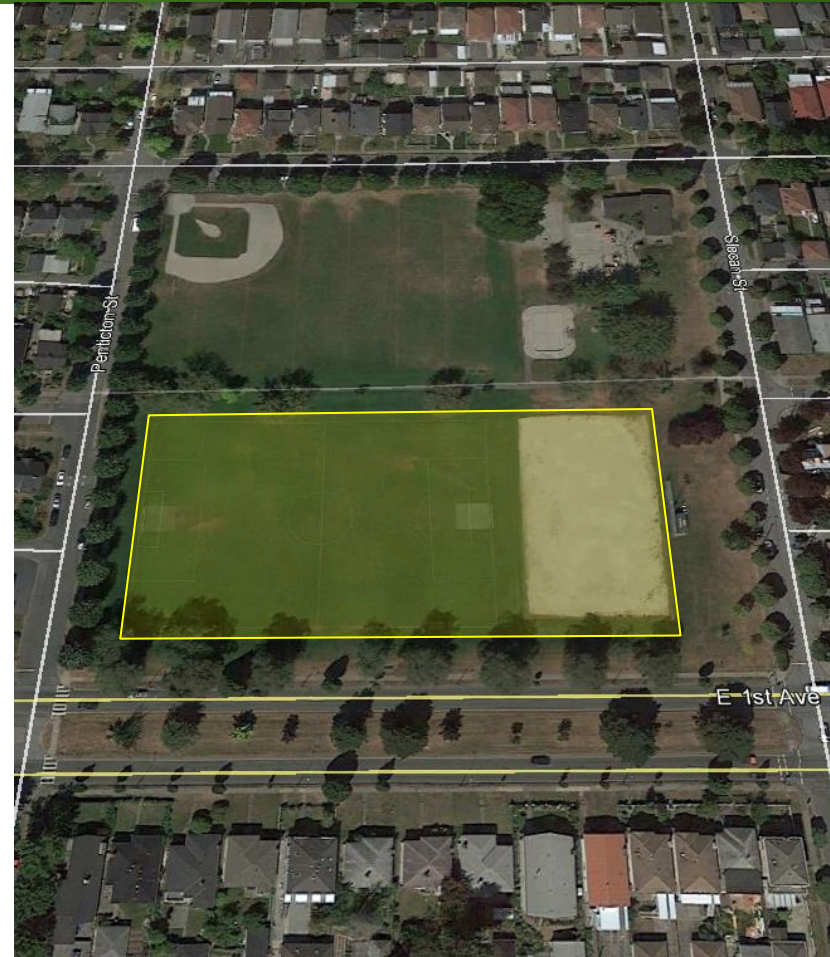
Background – Clinton Park

- Located in East Vancouver, bound by East 1st Ave, Grant St, Penticton St and Slocan St
- 3 hectare neighbourhood park
 - playground and wading pool
 - field house with washrooms
 - 1 baseball diamond
 - 2 grass fields
 - 1 all-weather gravel field with lights
- Large grass field with small turf inlay, impeding some games.



Background – Clinton Park

- + Existing grass field needs upgrade due to discontinuous surface
- + Existing lights & washrooms
- + Adjacent to major thoroughfare
- + High demand area
- + Supports a nexus of fields close enough to provide a tournament centre
- Grade A grass
- Possible drainage issues





Sir Winston Churchill Secondary

Background – Sir Winston Churchill High School



- Located in Central Vancouver, north of West 57 Ave, at Laurel and Heather Streets
- Large Vancouver School Board Site
 - high school
 - 1 running track
 - 1 baseball diamond
 - 3 grass fields
- Two potential locations
 - South of the school
 - Within the existing running track east of the school



Background – Sir Winston Churchill High School

- + VSB supports locating a synthetic turf field at every High School (where feasible)
- + Future potential for two fields
- + Underserved and growing neighbourhood
- + Good access by transit
- No existing lighting
- Parking needs
- Loss of grass fields (not PB managed)
- Would need washroom and change room facilities and/or school access



Next Steps

Engage a geotechnical firm to assess ground conditions, and provide a cost estimate for earthworks required to develop a synthetic turf field at each of the three short listed sites.	~4 months	Concurrent Timing
Seek input from local residents and sport communities on the opportunities and constraints of each site through open houses and online engagement.	~4 months	
Assess site, including: existing and projected user data, local demographic and population growth projections, transportation and parking needs, and other information as relevant.	~4 months	
Using research and site evaluation data, and engagement feedback staff develop final recommendations for Board review.	Early 2018	

- Staff in consultation with the Vancouver Field Sport Federation have considered site options for a new synthetic turf field.
- Many desirable sites, including Killarney, Strathcona, and Oak Park, as well as Vancouver Technical High School are good options, but cannot accommodate a 2018 quick start.
- Parks and Recreation Services Master Plan (VanPlay) will provide direction for a new Field Renewal Plan which will direct future siting and programming for new fields.
- For 2018, staff propose further assessing Clinton Park, Beaconsfield Park and Sir Winston Churchill High School as options for locating one new synthetic turf field in 2018/2019.
- Staff ask the Board to support further analysis of the three listed sites. Staff will return to the Board in early 2018 with a final site recommendation.

THAT the Vancouver Park Board endorse Beaconsfield Park, Clinton Park, and Sir Winston Churchill Secondary school for consideration as the potential site for a new synthetic turf playing field to be funded by Citywide Development Cost Levy (DCL) Funds, subject to further technical review and a public process.

