



Age Friendly Fitness Equipment in Memorial South Park

Park Board Committee Meeting
Monday, November 20, 2017



To share information about the public engagement process and to seek Board approval of the proposed location of an age friendly outdoor fitness area in Memorial South Park, so that staff may proceed with the detailed design and construction of the facility.

Background



The Board passed the following motion on October 3, 2016:

THEREFORE BE IT RESOLVED:

- A. THAT the Vancouver Board of Parks and Recreation direct staff to review potential opportunities to install senior friendly fitness equipment in Vancouver parks;
- B. THAT staff give consideration to engaging stakeholders such as seniors' associations, community centre associations, Seniors' Advisory Committee, and Persons with Disabilities Advisory Committee as may be beneficial;
- C. THAT staff report back to the Board with options for installation of such equipment, including giving due consideration to an initial pilot installation at Memorial Park South.

Background: Project Timeline



Background: Existing Fitness Areas in Vancouver Parks

- Memorial South Park
- China Creek North Park
- Douglas Park
- Kitsilano Beach Park
- Prince Edward Park
- Stanley Park
- Fraserview Park*
- Slidey Slides Park*
- Tisdall Park*



*Parks with age friendly equipment

Background: Memorial South Park

Entry Drive



Social Area

Play Area

AT Field



Cenotaph

Fieldhouse

Parking Lot



Community Engagement



Open House #1: Fitness Area Location Options

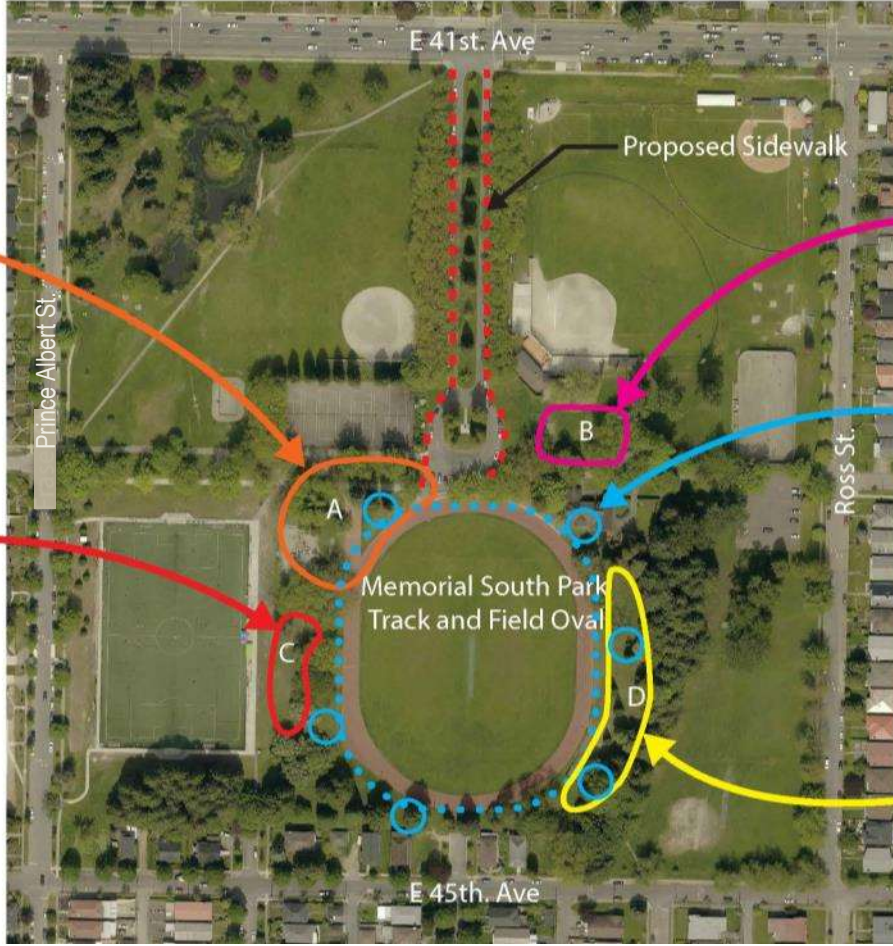
OPTION
A

OPTION
C

OPTION
B

OPTION
E

OPTION
D



Open House #1: Fitness Equipment Options

BALANCE

Four photographs showing people using balance equipment: a person on a narrow beam, a person on a platform with a handrail, a person on a low beam, and a person in a wheelchair on a platform with a handrail.

FLEXIBILITY

Three photographs showing people using flexibility equipment: a person on a platform with a handrail, a person in a wheelchair on a platform with a handrail, and a person on a large suspended structure.

MUSCLE STRENGTH

Five photographs showing people using muscle strength equipment: a person on a seated machine, a person on a standing machine, a person on a standing machine, a person on a standing machine, and a person on a standing machine.

AEROBIC ACTIVITIES

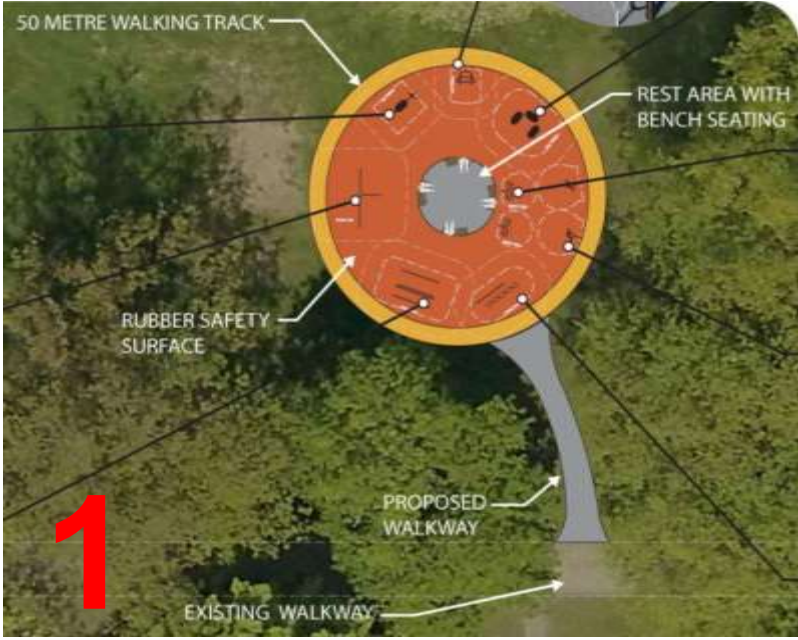
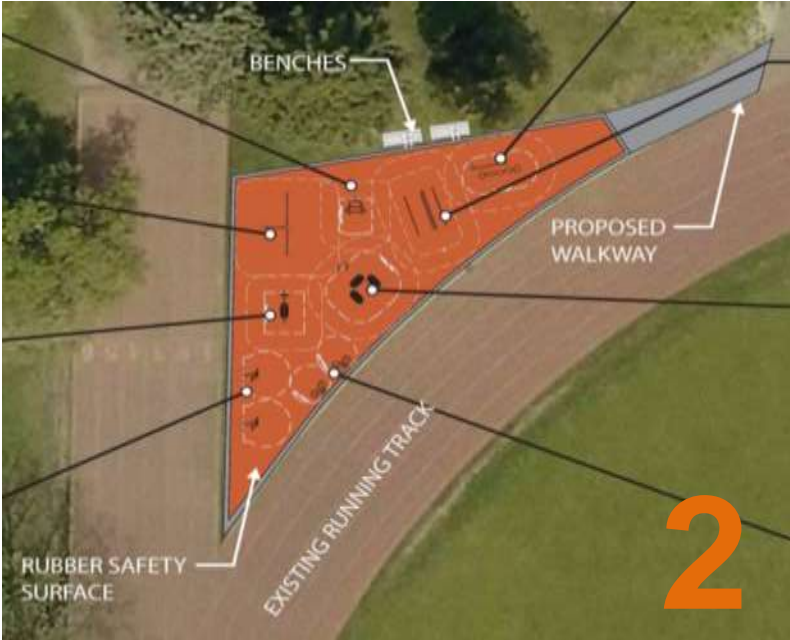
Four photographs showing people using aerobic equipment: a person on a seated machine, a person on a standing machine, a person on a standing machine, and a person on a standing machine.

Open House #1: Results

- **Preferred locations**
 - **Option 1** - North of the fieldhouse
 - **Option 2** - Northwest corner of the track
- **169** total survey responses (63 hard copy and 106 online)
- **97%** of respondents indicated **support** for the **proposed fitness area**
- **76%** of respondents indicated **support** for a **proposed sidewalk** along the entry drive connecting 41st Ave. to the centre of the park



Open House #2: Final Location of Fitness Area



Open House #2: Results

Option 1

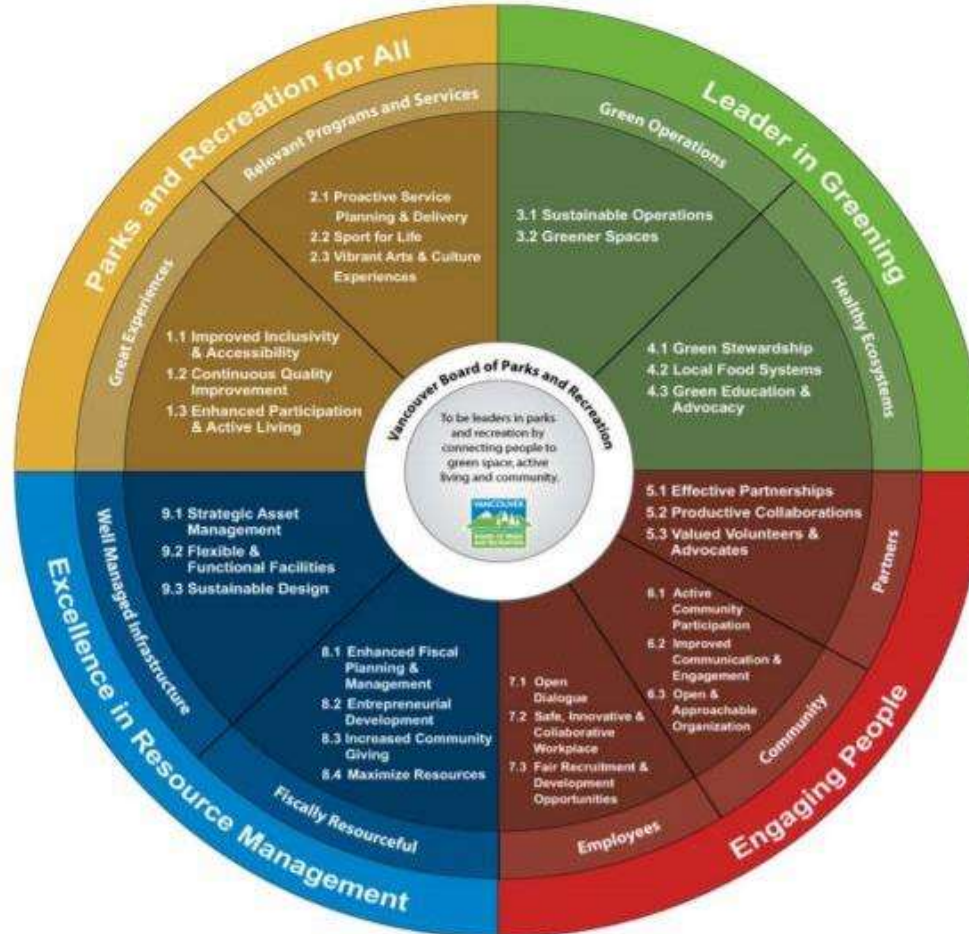
- **60** total survey responses (36 hard copy/24 online)
- **86%** of respondents preferred Option #1



- Persons with Disabilities Advisory Committee
- Senior's Advisory Committee
- Sunset and Kensington Community Associations
- Park Board staff

Alignment with Strategic Plan

- Inclusivity and Accessibility for seniors in parks
- Resilient Fitness Equipment



- Tree retention
- Rain water Infiltration
- Public Open Houses/Surveys
- Input from Operations and Recreation Staff

- Detailed design to begin immediately, subject to Board approval of location
- Construction targeted for summer-fall of 2018
- Preliminary project budget: \$200k
- Project will be funded through the Park Board's capital budget with funds currently available in the 2015-2018 capital plan

- A. THAT the Vancouver Park Board approve the proposed location for an age friendly outdoor fitness equipment area within Memorial South Park, as described in this report; and
- B. THAT the Board direct staff to proceed with detailed design and construction of the facility.

