



Metro Vancouver Stanley Park Water Supply Tunnel Public Engagement & Next Steps

Park Board Committee Meeting
Monday, January 15, 2018



- To provide an update on Metro Vancouver's Stanley Park Water Supply Tunnel project, particularly the community engagement, First Nations engagement and stakeholder consultation efforts completed to date, and;
- To request authorization for Metro Vancouver to proceed with the design of the proposed tunnel, including geotechnical drilling and detailed studies required for the new regional facility.

1. Project Overview
2. First Nations Engagement
3. Public Engagement
4. Next Steps



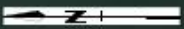
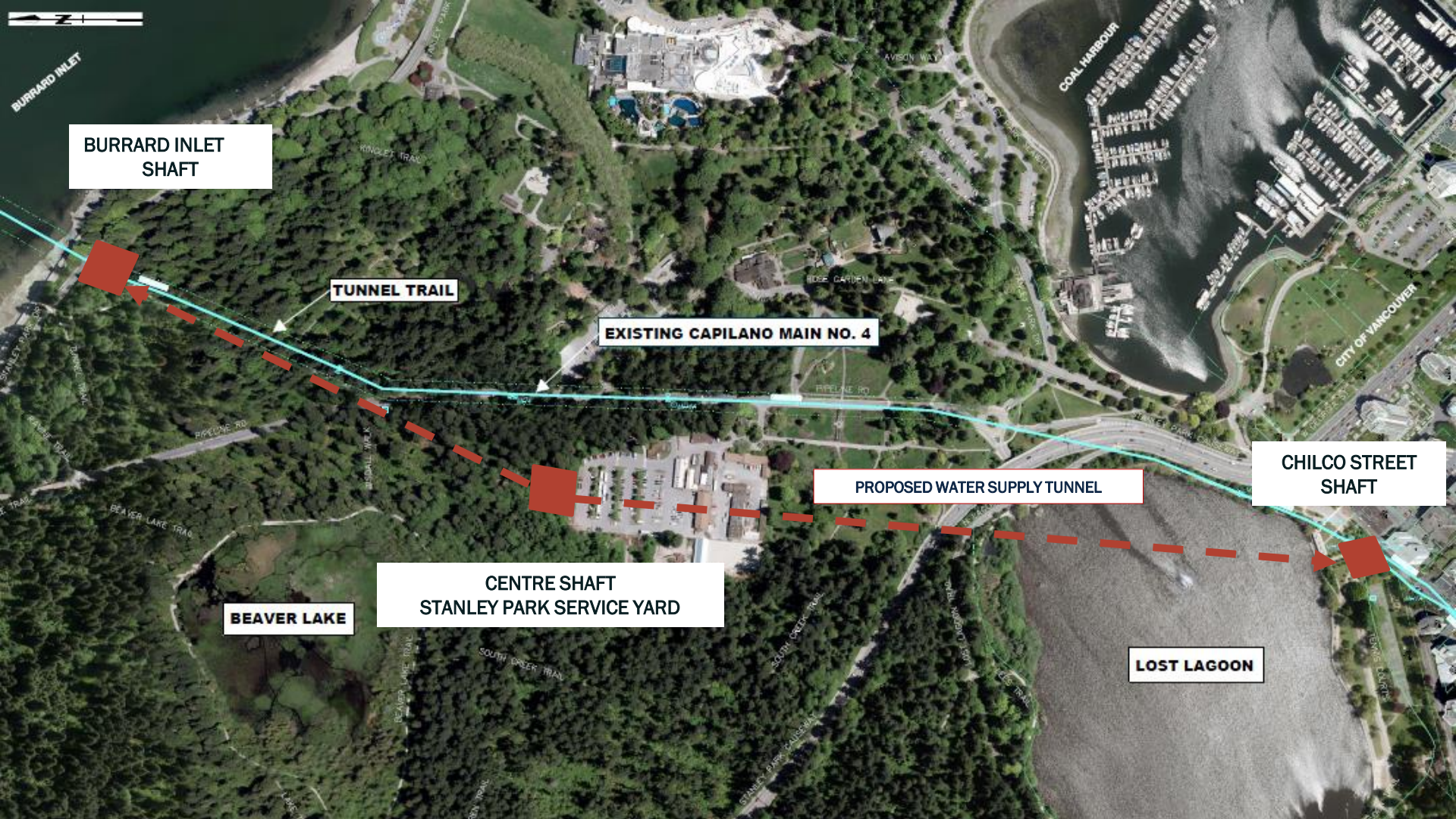
Stanley Park Water Supply Tunnel

(Construction of existing Capilano Main No. 4 at Lost Lagoon Circa 1932)

Metro Vancouver Water System



- Objectives:
 - Protecting First Nations' cultural resources
 - Limiting impacts to the natural environment
 - Maintaining access to the park
 - Protecting existing features and public amenities
 - Minimizing construction duration
- Preferred Option:
 - Deep underground tunnel
 - Constructed from 3 tunnel shafts



BURRARD INLET

**BURRARD INLET
SHAFT**

TUNNEL TRAIL

EXISTING CAPILANO MAIN NO. 4

PROPOSED WATER SUPPLY TUNNEL

**CHILCO STREET
SHAFT**

**CENTRE SHAFT
STANLEY PARK SERVICE YARD**

BEAVER LAKE

LOST LAGOON

WINDY PT. TRAIL

AVISON WAY

COAL HARBOUR

CITY OF VANCOUVER

PIPELINE RD

PIPELINE RD

BEAVER LAKE TRAIL

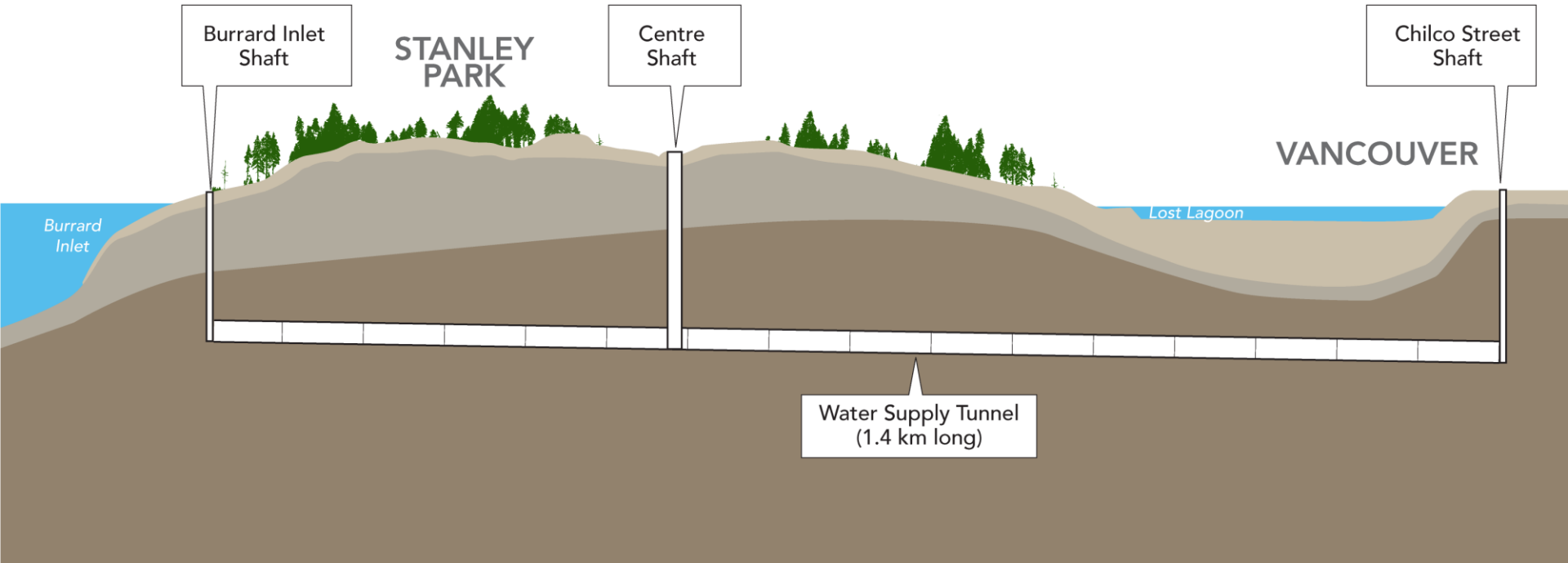
BEAVER LAKE TRAIL

SOUTH CREEK TRAIL

SOUTH CREEK TRAIL

TEMESLEY TRAIL

Conceptual Geotechnical Profile



- Minimizing work space at the tunnel shafts
- Archaeological monitoring of construction activities
- Minimizing truck traffic during periods of peak usage
- Rehabilitation and replanting of disturbed areas and repair of impacted infrastructure within the park
- Noise, dust and other mitigation measures
- Environmental restoration projects

- Information sharing sessions:
 - Fall 2016 to Spring 2017
- Site Visits to Stanley Park:
 - Summer 2017
- Stanley Park Intergovernmental Working Group Meetings:
 - March and September 2017

- Minimize impacts to park
- Limit tree loss
- Cultural awareness and sensitivity training
- First Nations monitoring
- Develop protocol to manage ancestral remains



- Metro Vancouver is committed to minimizing the impacts of its large infrastructure projects on the community
- Identify values, key considerations, and concerns
- Identify potential project impacts
- Identify areas where public input can add value and where the project can benefit the community

- Businesses and organizations with interests in and around the park
- Local residents
- Park users
- General public

- Stanley Park Ecology Society
- Stanley Park Horse Drawn Tours
- Stanley Park Miniature Train
- Vancouver Police Department Mounted Unit
- West End Business Improvement Association
- HUB: Your Cycling Connection
- Vancouver Board of Parks and Recreation
- Operations
- Special Events
- Communications
- Arts and Culture
- Commercial Operations

Outreach Summary



22,900+
reached by
Facebook ads



20,800+
impressions on
Twitter



17,000+
postcards and posters to
residents, businesses and
community centres



400+
project
webpage visits



5 information signs
in the park



2
newspaper ads



2 media stories online
and on the radio



Emails to project
stakeholders

Open House and Information Booths





**Support for the
proposed project**



**Minimize
construction impacts
on the ecology
of the park**



**Minimize
construction impacts
on park operations**



**Minimize
construction impacts
on residents and
park users,
including cyclists**

Engagement Summary



Community
Open House



43
feedback forms



3
pop-up
kiosks



Meetings with
11
stakeholder groups



First
Nations
engagement



240+
participants

Detailed Design

Minimizing project impacts and reassuring around accountability

Engagement

- Continue to hold face-to-face meetings with impacted groups
- Capture feedback on construction impacts and incorporate into design

Communications

- Demonstrate how input has shaped the project
- Project updates to stakeholder list
- Update communications materials as needed

Construction

Implementing construction communications, monitoring and being responsive

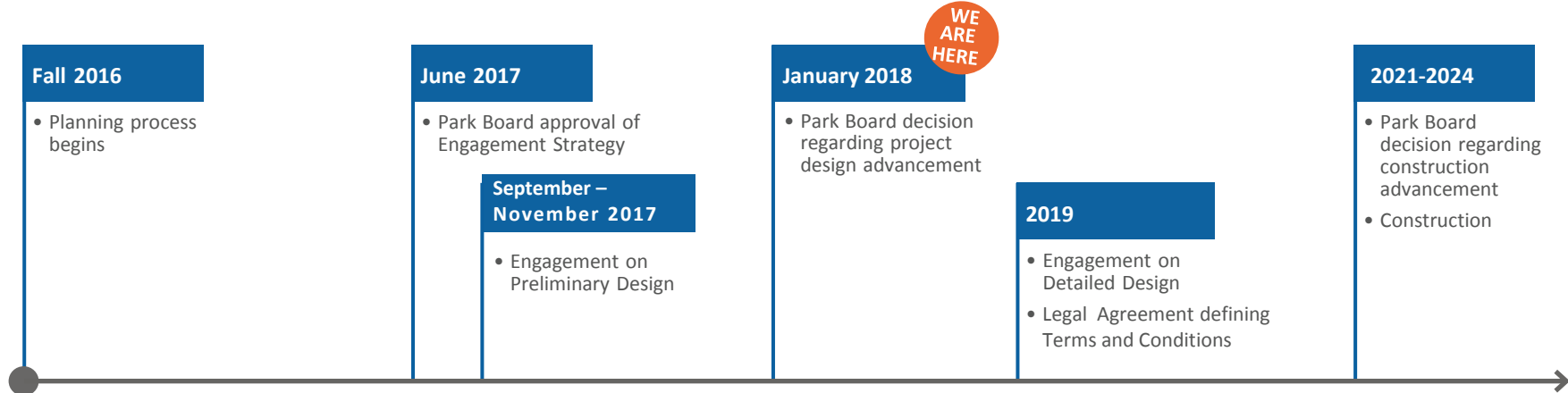
Engagement

- Hold community meeting prior to construction
- Develop, implement public notification strategy
- Widely distribute Community Liaison Officer contact information
- Monitor, track issues, respond

Communications

- Update project information signage
- Ongoing project updates

■ Planning Process Timeline



Fall 2016 to Winter 2024

THAT the Vancouver Park Board authorize Metro Vancouver to proceed with the design of the proposed Stanley Park Water Supply Tunnel, including geotechnical drilling and detailed studies required for the new regional facility.

