



Renfrew Ravine and Renfrew Community Park Renewals

Construction Contract

Park Board Committee Meeting
Monday, February 19, 2018



To seek approval of the construction contract award for renewals at Renfrew Ravine Park and Renfrew Community Park, with costs coming from the current capital budget.

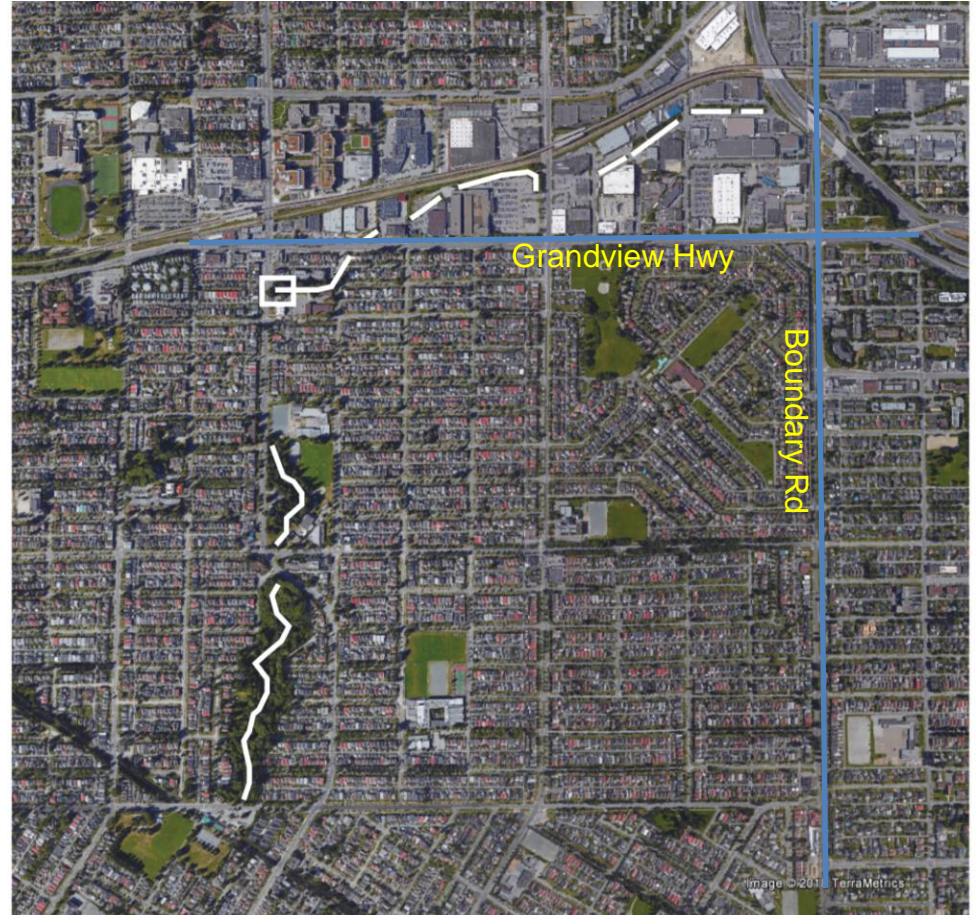
Background



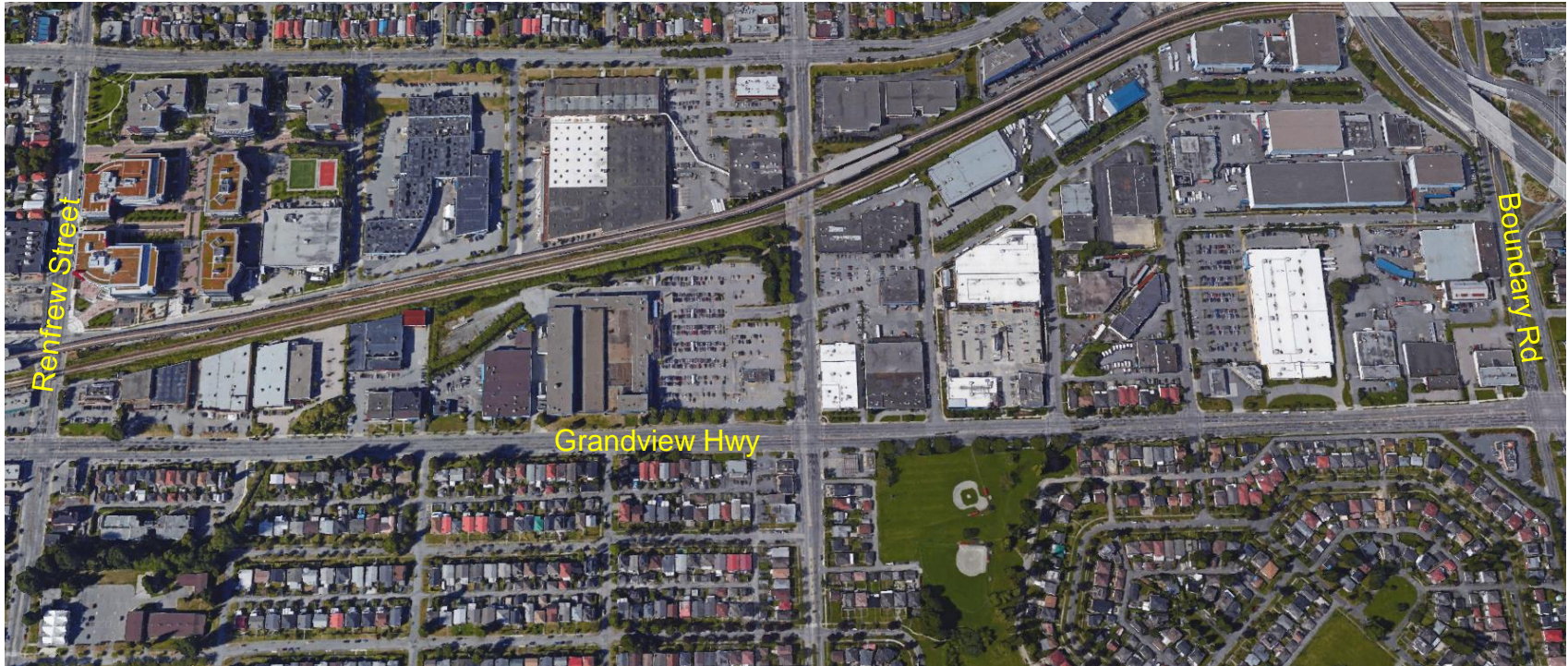
- Still Creek is the longest of the few visible creeks remaining in Vancouver and is part of a larger rehabilitation project within the City of Vancouver.
- Still Creek runs through both Renfrew Ravine Park and Renfrew Community Park, and nearly 1 km of the creek is visible within the parks.

Still Creek in Vancouver

- Approximately 3km long in Vancouver
- Approximately 65% of the creek is daylight

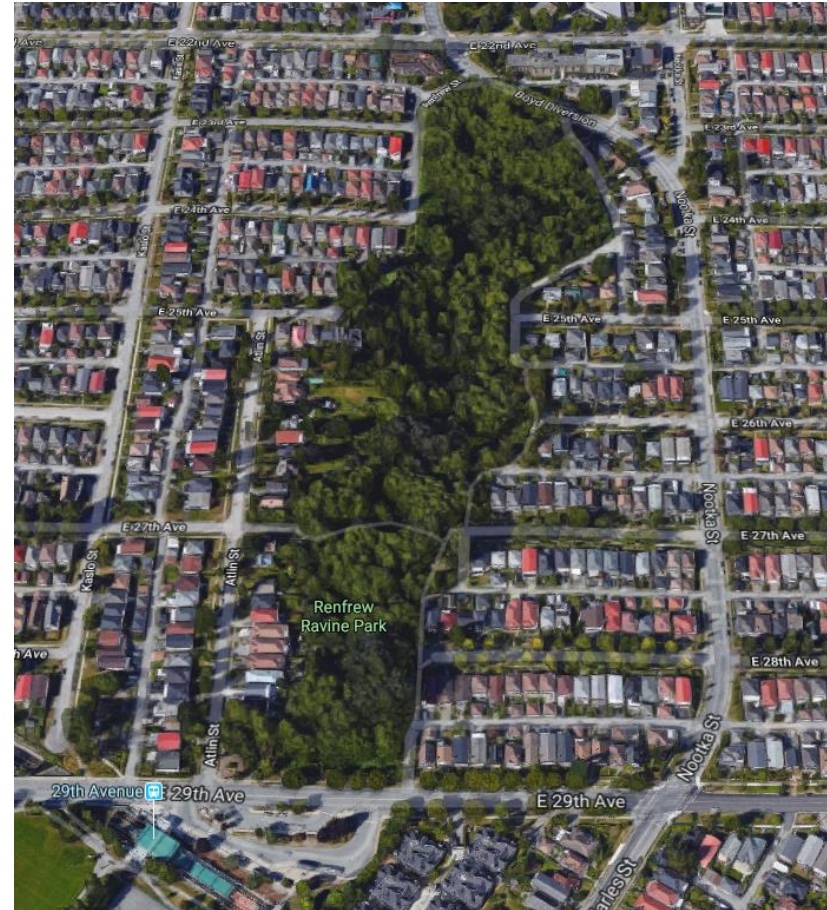


Still Creek Rehabilitation and Enhancement Study (2002)

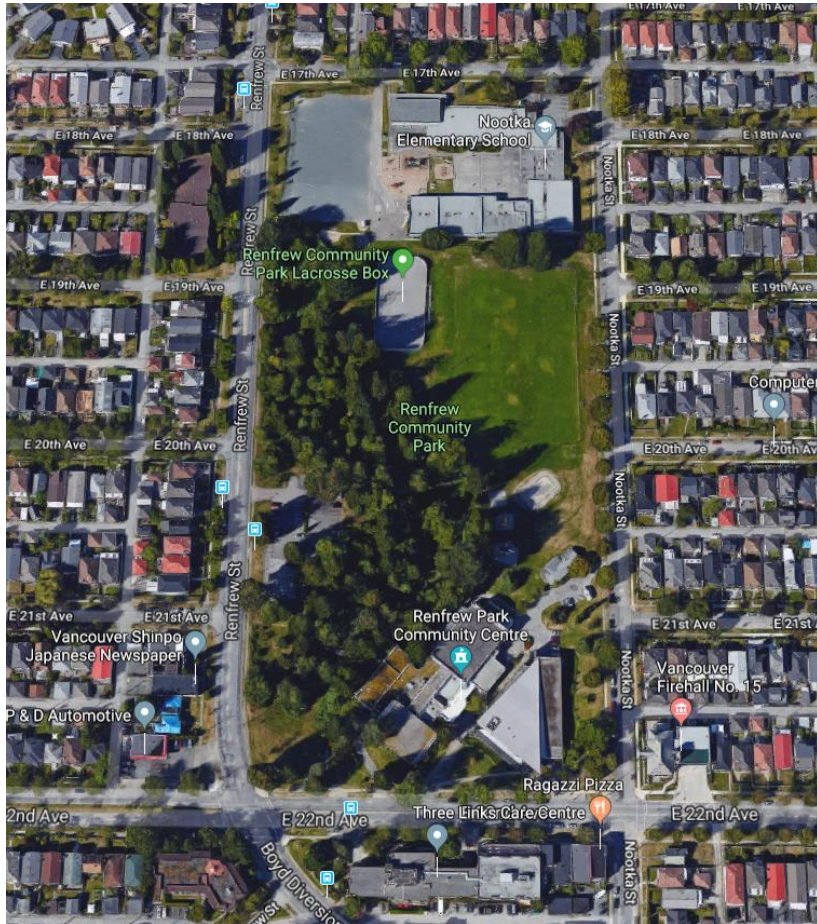


Renfrew Ravine Park

- 6.0 hectares
- Located north of the 29th Ave Skytrain Station/south of East 22nd Ave
- Unique: contains the only creek in a park natural ravine setting



Renfrew Community Park



- 5.0 hectares
- Home to several community facilities
- Includes Renfrew Public Library, Renfrew Community Centre and Indoor Pool

Renfrew Ravine Master Plan

- Master plan for the two parks completed in 2013
- Public engagement process yielded a recommended concept plan for both parks focussing on ecological restoration, rehabilitation of the creek and continued trail development



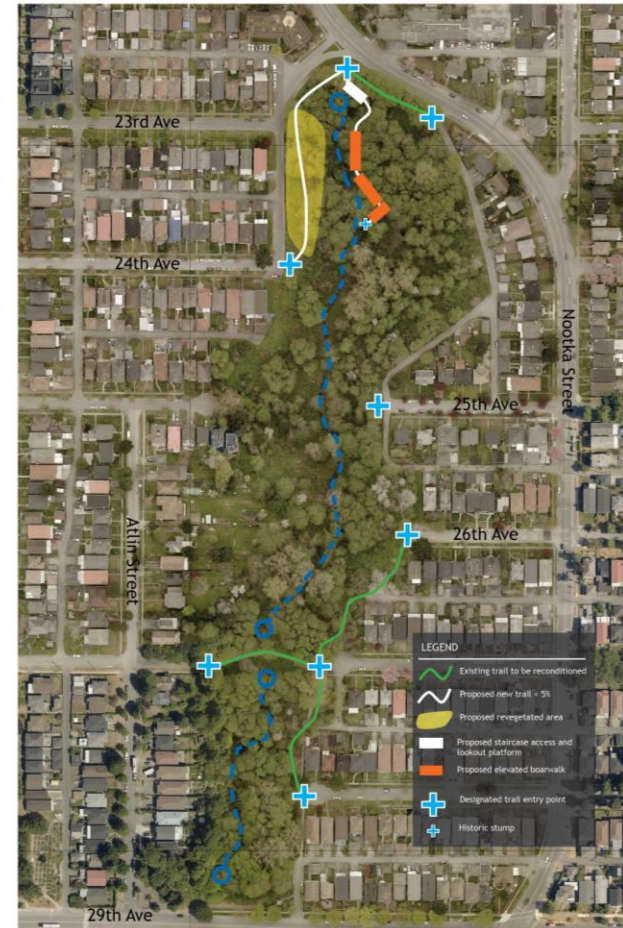
MASTER PLAN FOR RENFREW RAVINE AND RENFREW COMMUNITY PARKS

September 2013

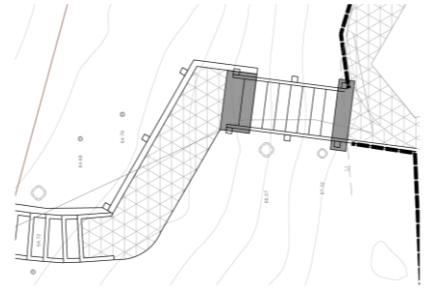
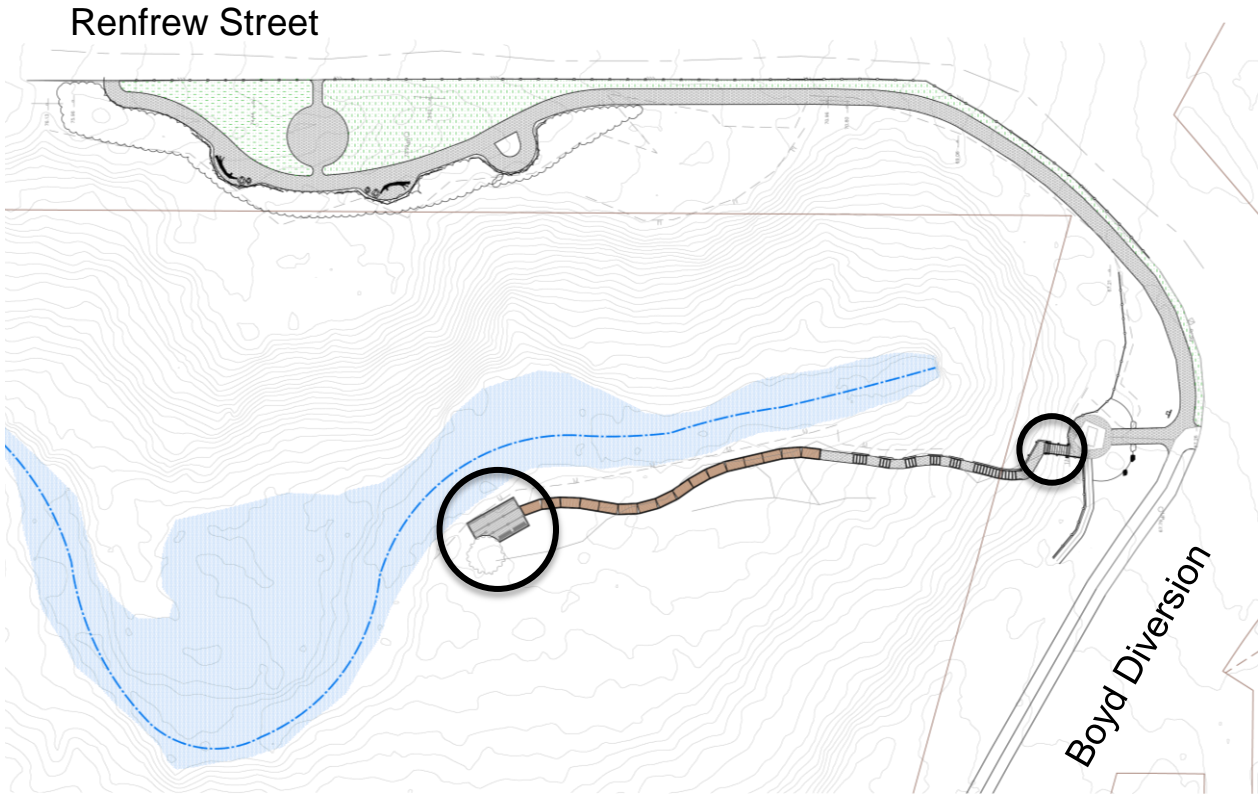


2018 Renfrew Ravine Renewal

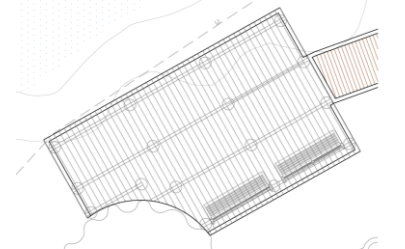
- Renewal to Renfrew Ravine Park includes:
 - New steel staircase to access the stream
 - Elevated timber boardwalk
 - New native trees and plants
 - Improved trails and strengthening of the park's western edge



2018 Renfrew Ravine Renewal

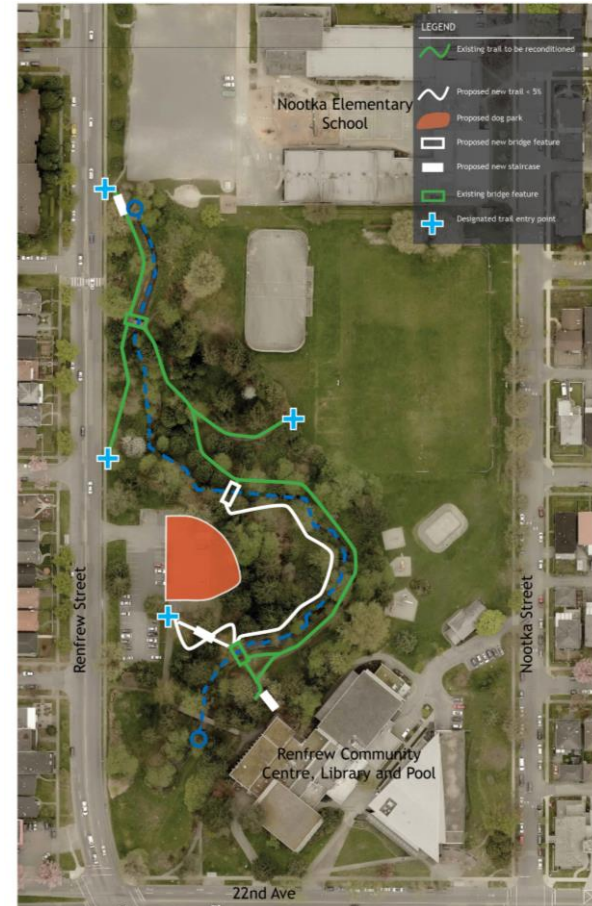


Steel Staircase



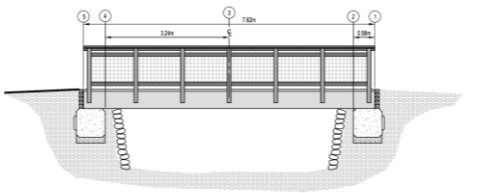
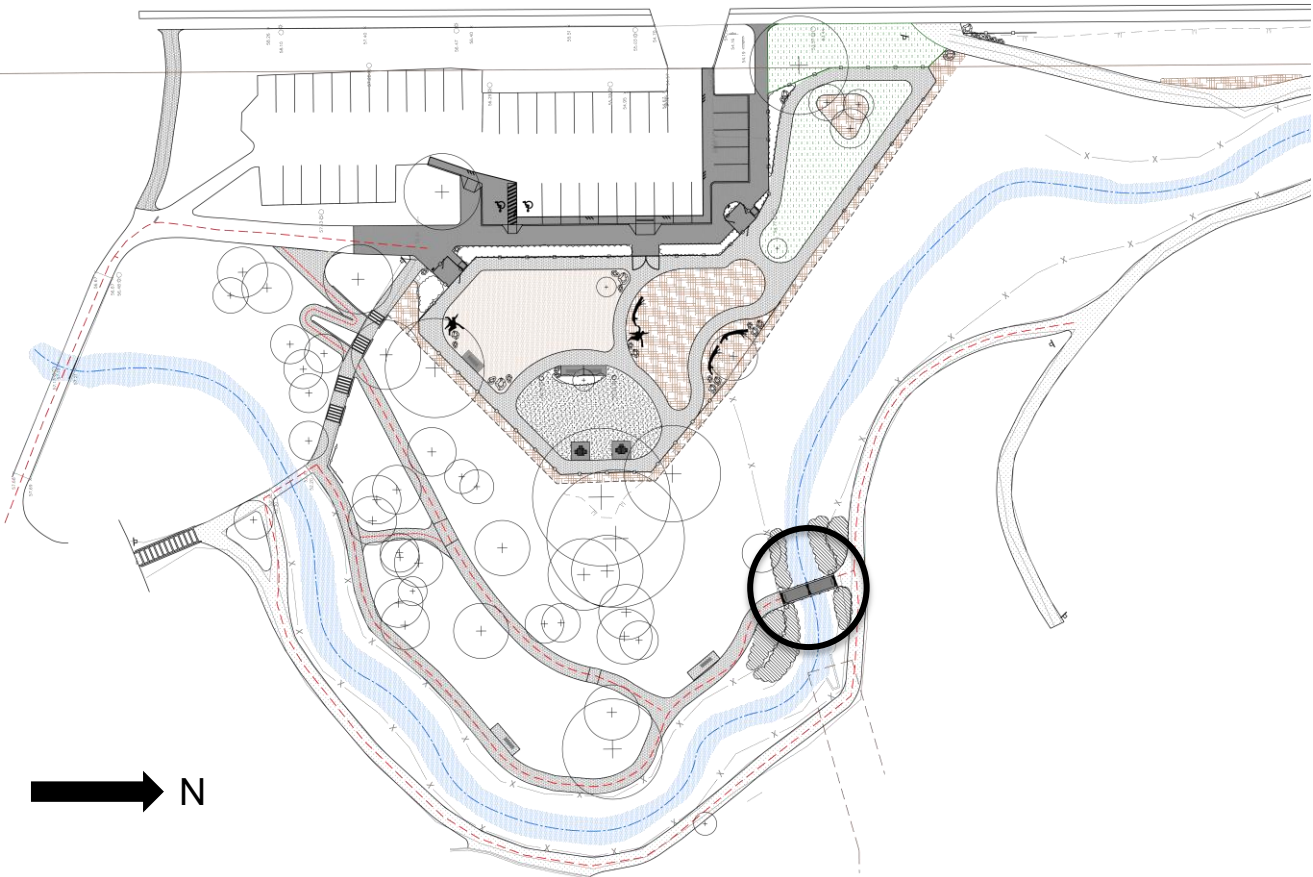
Boardwalk View Deck

- Includes:
 - Enhancement of existing walking trails
 - Accessible connections
 - New stairs and a new creek crossing
 - Native vegetation and trees to enhance character/protect creek a new dog park (People Parks and Dogs Strategy)

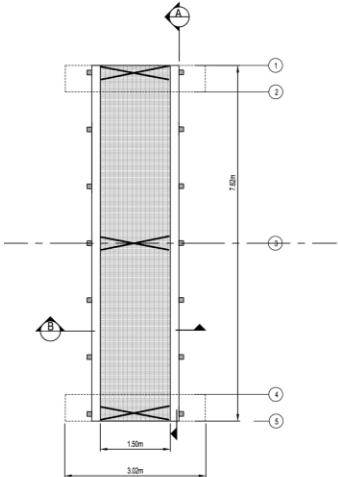


2018 Renfrew Community Park Renewal

Renfrew Street



New Bridge (Section)



New Bridge (Plan)

Park Board Strategic Framework

- 1.1 - Improved Inclusivity and Accessibility
- 3.2 - Greener Spaces
- 4.1 - Green Stewardship
- 4.3 – Green Education and Advocacy
- 6.1 - Active Community Participation





Tender Summary



The ITT was issued in the accordance with Park Board's Procurement Policy. Bids were received from Rust Investments Limited (\$701,942.51), Canadian Landscape and Civil Services (\$734,047.00), North Construction Ltd. (\$863,067.00), and Wilco Civil Inc (\$1,108,383.00).

- Begin construction in late May 2018
- In stream works complete by September 1, 2018
- Substantial completion by October 1, 2018

- A. THAT the Vancouver Park Board authorize staff to negotiate to the satisfaction of the Park Board's General Manager, the City's Director of Legal Services, and the City's Chief Purchasing Official and enter into a contract with Rust Investments Ltd. (dba Shangri-La Landscaping), for renewal at Renfrew Ravine and Community Parks, with an estimated contract value of \$701,942.51 plus applicable taxes to be funded through the capital budget;
- B. FURTHER THAT the Director of Legal Services, Chief Purchasing Official, and Park Board General Manager be authorized to execute on behalf of the Park Board the contract contemplated by Recommendation A; and
- C. THAT no legal rights or obligations will be created by the Park Board's adoption of Recommendations A and B above, until the contract is executed by the authorized signatories of the City and Park Board as set out in these Recommendations.

