



# Still Creek Community Garden Relocation to Slocan Park

Park Board Committee Meeting  
Monday, March 12, 2018



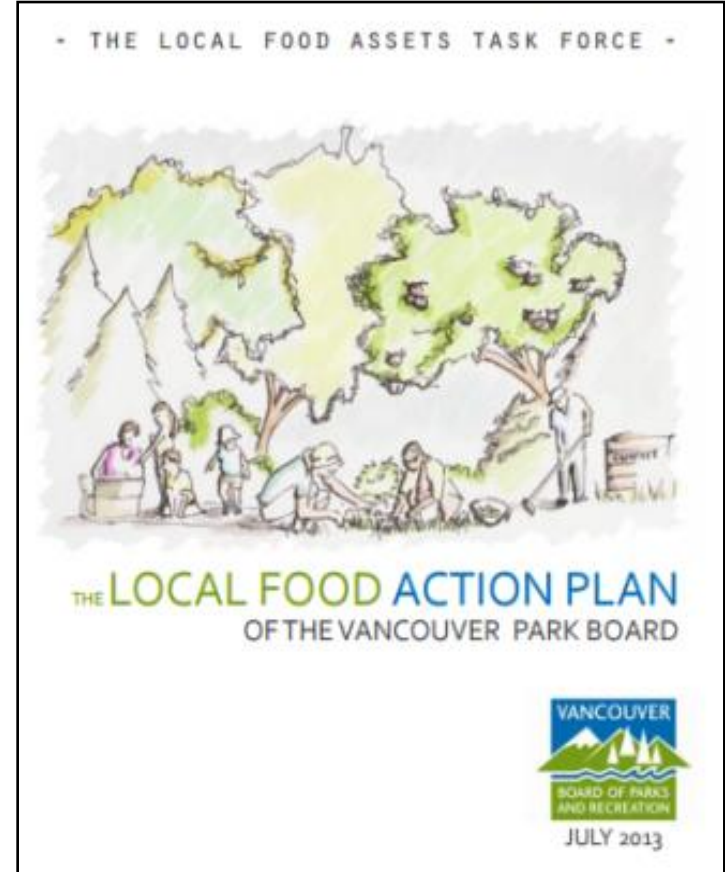
# Purpose of this Presentation



- To summarize the Park Board-led process for identifying a suitable site for the relocation of the Still Creek Community Garden.
- To describe the results of the community engagement process for relocation of the Still Creek Community Garden to Slocan Park.
- To seek approval for the relocation of the Still Creek Community Garden to Slocan Park and authorization for staff to begin the design and construction process.

## Policy to support local food initiatives on Park Board land:

- Local Food Action Plan (2013)
  - Increase physical food assets
  - Support growing more food on Park Board land
- Park Board Strategic Plan
- Greenest City Action Plan
- Vancouver Food Strategy
- Vancouver Food Charter





# Community Gardens in Parks

- There are 25+ community gardens in parks totaling over 1,000 plots.
- In addition, there are collaborative gardens, pollinator plantings, mason bee lodges, apiaries, educational gardens, arts and culture based gardens and food trees.
- Each garden operates through a license agreement between the Park Board and a non-profit society.
- All gardens are open to the public.



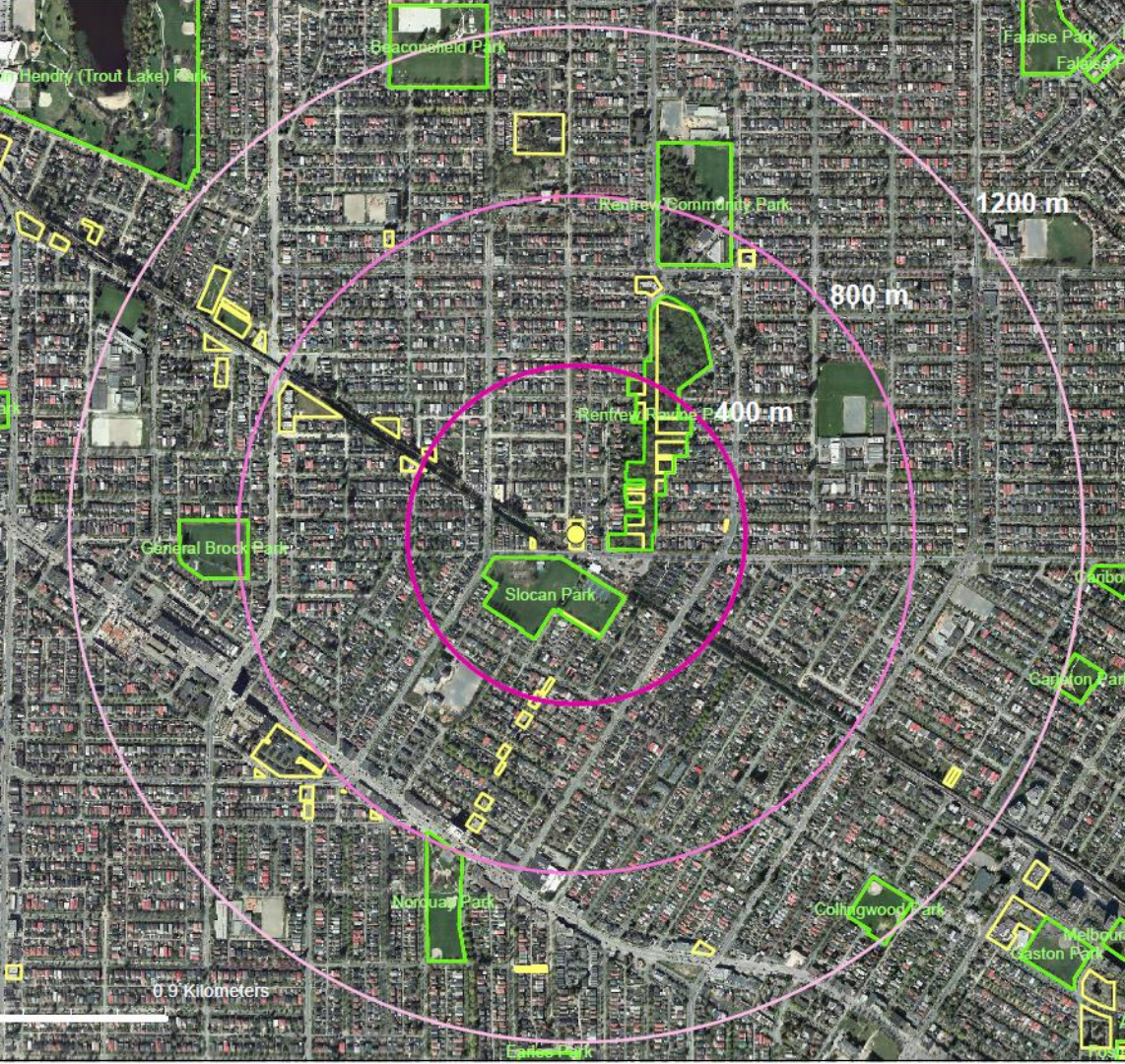
- More than 2,100 people across the City said they were homeless during the 2017 homeless count (600 of these individuals were living outside).
- Temporary Modular Housing (TMH) is a partnership between the City of Vancouver and BC Housing to build 600 units to address urgent need.
- 4410 Kaslo Street is a City-owned property that was approved for 50 single studio homes (approximately 320 sq. ft each).
- The City's Kaslo TMH Project necessitated the relocation of the Still Creek Community Garden from the site.

# About the Still Creek Community Garden

- **History:** created in 2011 by the local community.
- **Structure:** 45 garden beds, 7 accessible beds, 2 beehives, a charity donation bed and communal berry and herb beds.
- **Size:** it is approximately 675 square meters.
- **Membership:** 40 members with half of the members living in the neighbourhood and half from other east Vancouver neighbourhoods.







# Site Analysis



- City and Park Board staff reviewed all city-owned and park sites with 1200 m of the existing garden (roughly a 15 minute walk).
- 42 sites were identified and assessed.
- Through site visits and analysis, a short list of 5 sites was presented to the existing gardeners.

# Criteria for Selecting a New Site

- **Proximity to the Existing Garden**  
Located close to Still Creek Community Garden to continue to build sense of community within neighbourhood
- **Accessibility**  
Inclusive for everyone – all ages and abilities
- **Access to Transit**  
Accessible by all modes of transportation
- **Sunlight**  
Supports successful gardening and food production
- **Safety**  
In a location that always feels safe, from dusk to dawn





Vacant site  
Considered not  
accessible

4218 & 4228  
Penticton St  
Considered too  
private/unsafe

City/Private land  
future development  
site (not part of  
review)

2575 E 27th Ave  
Considered not  
accessible

2761 E 29th Ave  
Considered too  
small

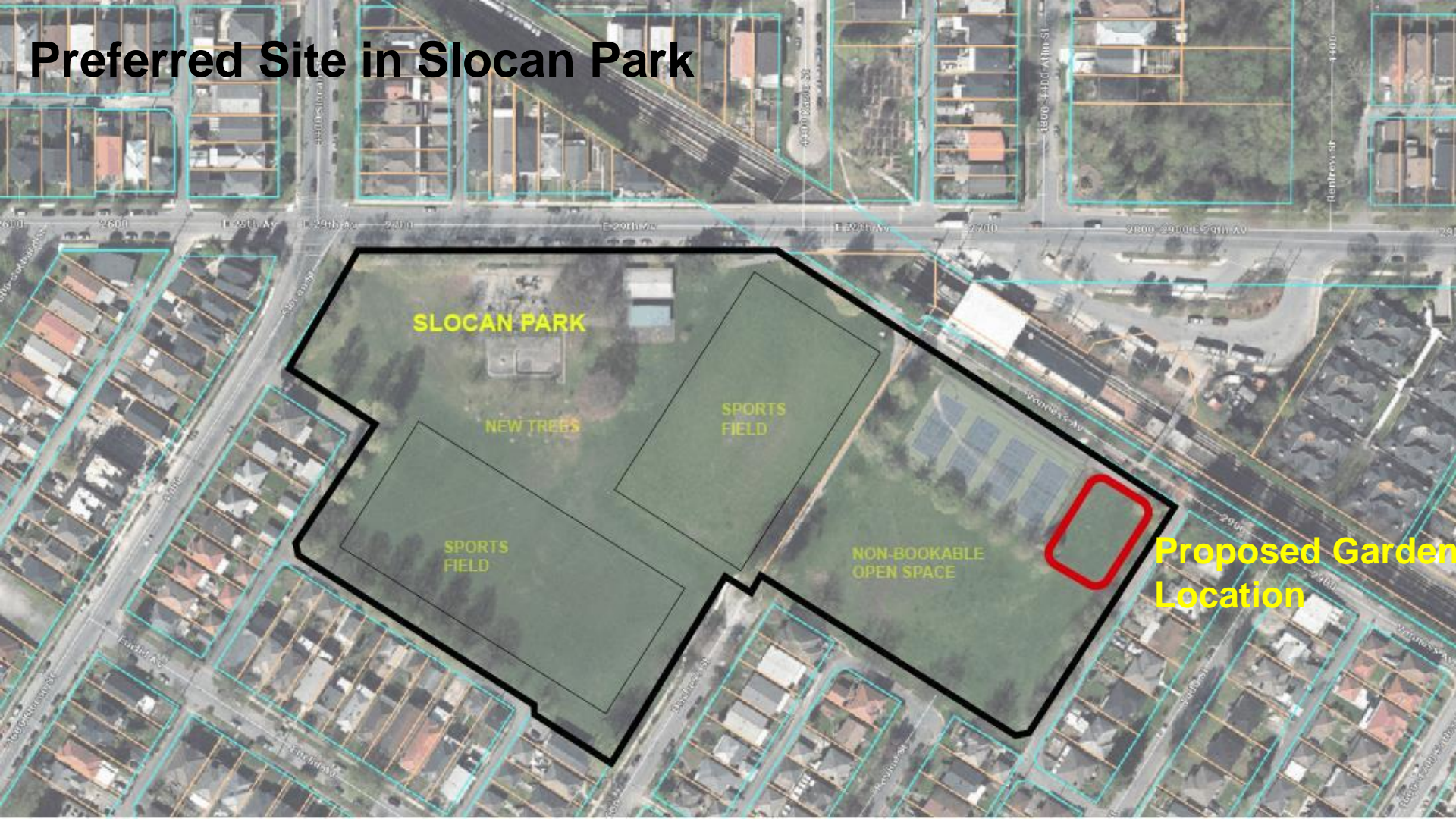
Existing garden

Slocan Park  
Preferred site

# SkyTrain Corridor Sites



# Preferred Site in Slocan Park







Preferred Site in Slokan Park



# Community Engagement Process

Park Board staff led an engagement process to gather feedback about the potential relocation of the garden to Slocan Park.

- Notifications - mail outs, site-sign, posters, social media, project webpage
- Open House (translation available) – over 50 people attended
- Questionnaire - Talk Vancouver and in-person (translated) - 72 responses
- Workshop/Meetings – 3 events with Still Creek Community Garden committee



## **Key result:**

53% of 72 respondents supported locating the garden next to the tennis courts in Slocan Park, 13% were neutral and 35% disagreed.

Many comments were not supportive of the City's Kaslo TMH project and also did not support the garden relocation.

## **General responses in support:**

- Provides a new use to an underutilized location in Slocan Park.
- Accessible location with greater public presence.

## **General responses in opposition:**

- The garden will take away park area.
- General dislike of community gardens (messiness).
- Not a good location for growing food (too wet).

# Proposed Garden Design Components

- Approximately 46 garden plots including wheelchair accessible beds
- Garden shed and potting benches
- Water access for irrigation, drainage and surfacing materials
- Apiary (beehive(s)) within fenced area
- Pollinator garden (meadow or perennial bed) and fruit trees
- Communal garden area (corn or pumpkin patch)
- Seating (Benches, picnic tables)



Subject to Board approval, the next steps are:

1. Produce final design with details to the satisfaction of the General Manager; funding in full by City of Vancouver for design and construction.
2. Enter into 5-year licence agreement – includes details about maintaining a clean and safe site that is publicly accessible at all times (Park Board staff working on update).
3. Garden construction; Target completion in summer 2018.

- A. THAT the Vancouver Park Board approve relocating the Still Creek Community Garden to Slocan Park, with construction to be funded in full by the City of Vancouver, with all details to the satisfaction of the General Manager; and
- B. THAT the Board grant a five-year licence to the Collingwood Neighbourhood House Society to operate the community garden, with all terms consistent with the Urban Agriculture Policy (2015).

