



GENERAL MANAGER'S REPORT

Regular Park Board Meeting
Monday, June 18, 2018



Park Development – Stanley Park New Accessible Pathway



- Signs & fencing will protect sensitive cedar tree stand & guide pedestrians.



- Plans finalized for the construction of a new accessible pathway from the seawall
- Connects to Info Booth & AAA Horse and Carriage Terminal

- Renewal project delayed as the park falls within the Japanese beetle containment and treatment zone;
- Project completion now targeted for mid-2019





- Project nearly complete; soft opening end of June;
- Remaining work includes:
 - playground surfacing;
 - dog off-leash area fencing; and
 - building community garden boxes.

Park Planning – VanPlay Community Dialogue



VanPlay Community Dialogue was held on June 6, 2018, where more than 30 residents and stakeholders joined Commissioners and staff to discuss 10 draft goal statements.

Park Planning – Arbutus Greenway

- Park Board staff are working with project team to strategically coordinate the greenway's design vision with plans for the 6 parks adjacent to the greenway:

6th & Fir, Delamont, Quilchena, Kerrisdale, Riverview, and William Mackie.

- The design vision will be shared with the Board and presented to Council in July.



Park Planning – Northeast False Creek Park Design



- New design to reflect indigenous values and principles, with First Nations support;
- Staff will consult stakeholders & host series of engagements in Chinatown
- Updates to Board & Council in July.

Park Operations – Japanese Beetle Treatment

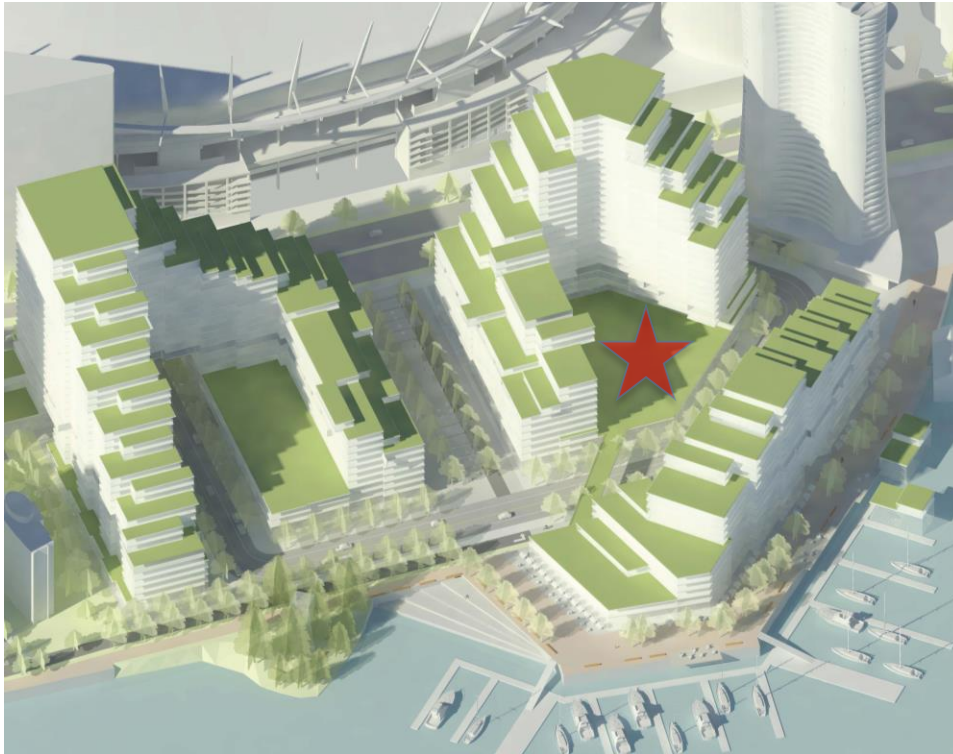


- Received orders for containment & treatment of invasive Japanese beetle found in False Creek;
- Pesticides to be applied to all parks in area in June;
- Park GIS team developed an interactive map for public.



Vancity Community Pass launched last week:

- Mobi bike share pilot program
- Offers low income residents access for \$20/year
- All Park Board Leisure Access Program users eligible



- Rezoning application for Plaza of Nations going to Council on June 19, 2018;
- Community Amenity Contributions of Park Board interest include:
 - 40,000sf Community Centre (\$41M)
 - 31,000sf Ice Rink (\$25M)
- Ice Rink primarily for public use and will function as a practice space for the Vancouver Canucks in the morning.

Board Briefing Memos: June 4 to 15, 2018



| Date: | Issued By: | Topic |
|--------|--|--|
| June 4 | Sadhu Johnston – City Manager and Malcolm Bromley – General Manager | Park Board Jurisdiction – Joint CoV/PB Review Project |
| June 4 | Dave Hutch – Manager, Planning and Research | Reclining Figure Restoration Update |
| Jun 15 | Donnie Rosa – Director of Recreation | Mobi Bike Share Vancity Community Pass |

