



QUEEN ELIZABETH PARK MASTER PLAN

Project Approach

Park Board Committee Meeting
January 20, 2020



To provide the Board with information and seek the Board's approval of the project approach, key themes and scope of work for the Queen Elizabeth Master Plan.

Outline of Presentation

- Background
 - Study Area
 - Queen Elizabeth Park Timeline
- Why Master Plan now?
- Key Themes (Culture, Nature, Connectivity, Service Needs)
- Project Schedule
- Recommendation

Background - Study Area



Background - Park Network



Background - Community Context North



STANLEY PARK

DOWNTOWN VANCOUVER

FAIRVIEW

MOUNT PLEASANT

KENSINGTON-CEDAR COTTAGE

SHAUGHNESSY

SOUTH CAMBIE

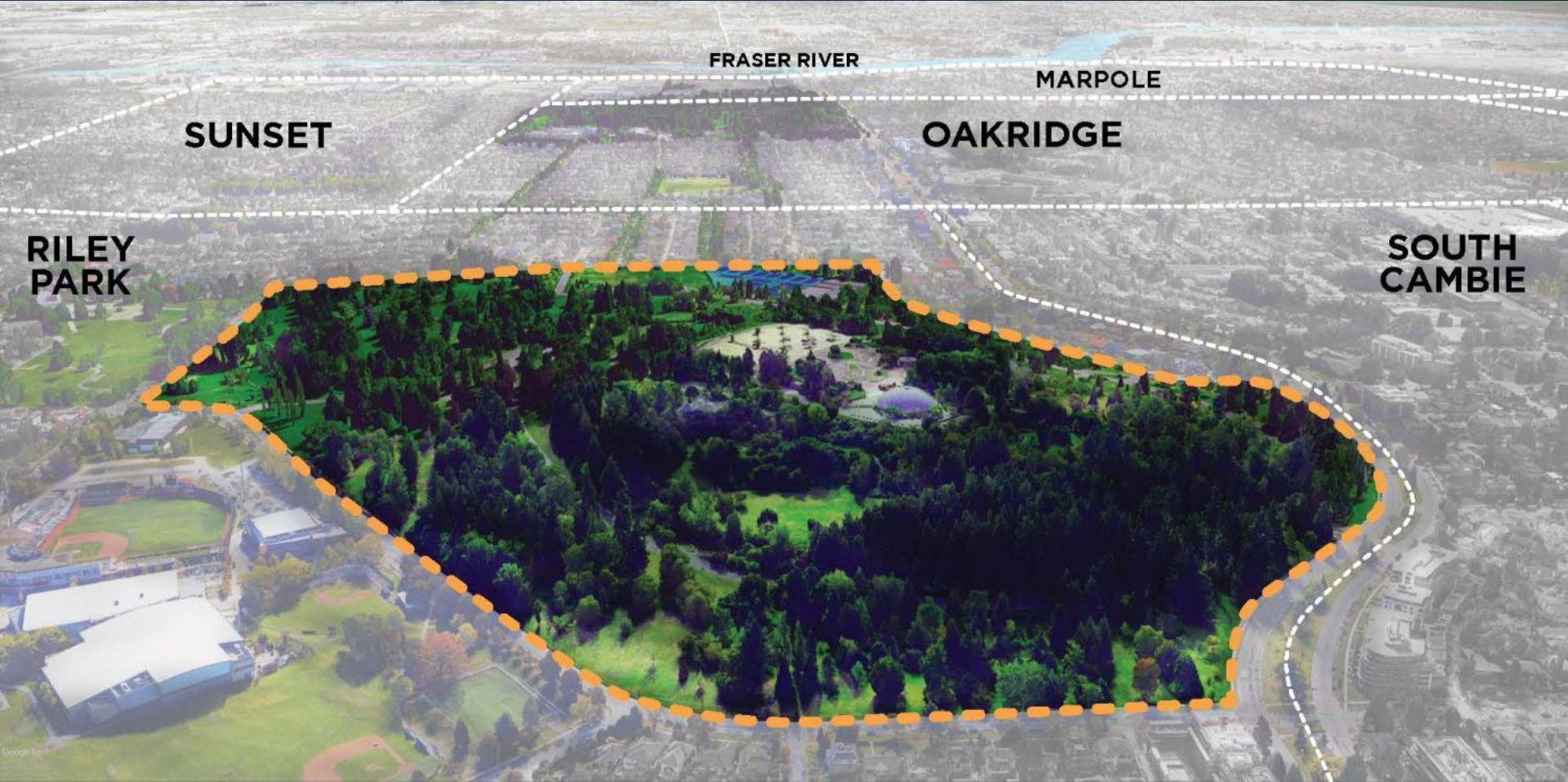
RILEY PARK

OAKRIDGE

SUNSET



Background - Community Context South



FRASER RIVER

MARPOLE

SUNSET

OAKRIDGE

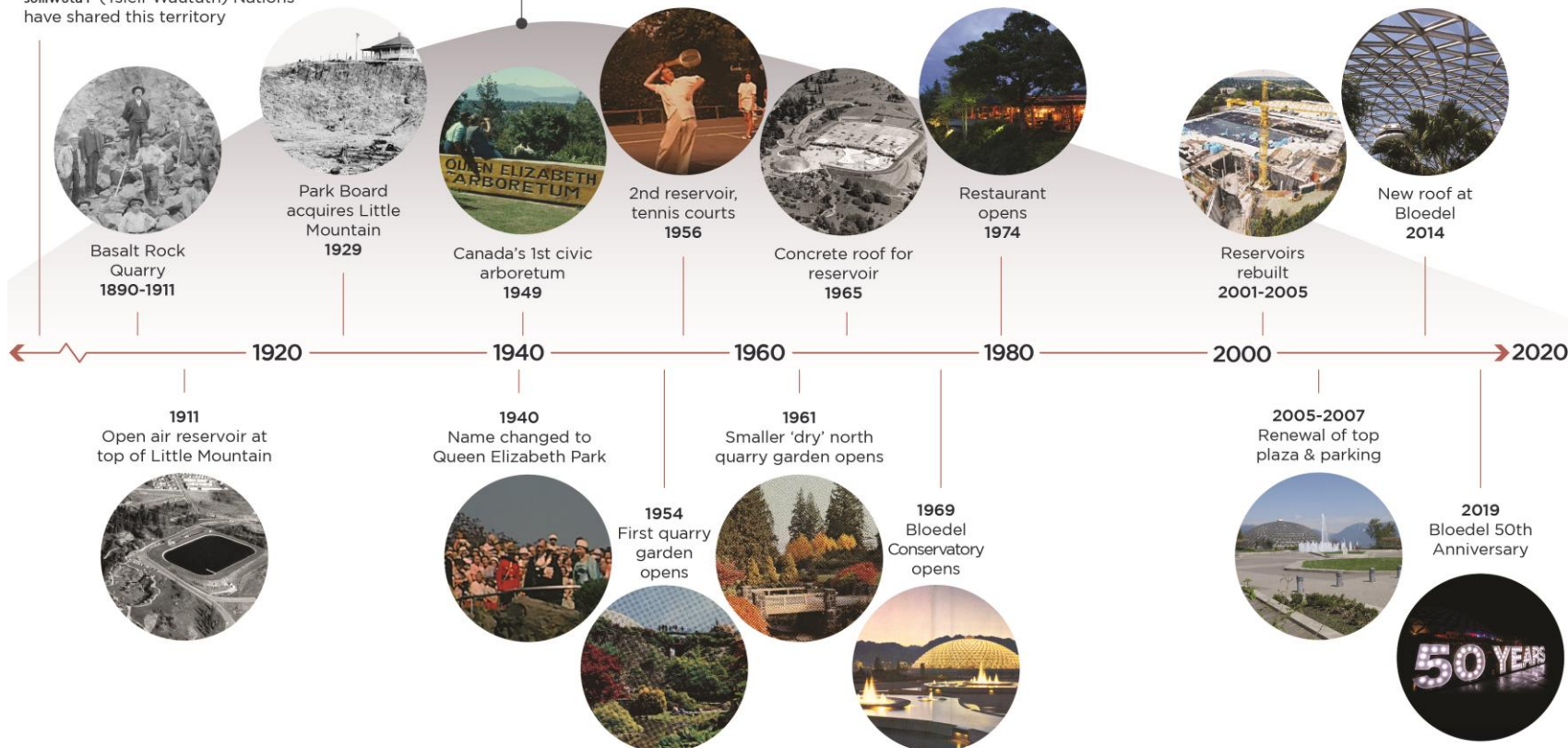
RILEY
PARK

SOUTH
CAMBIE

Background - Queen Elizabeth Park Timeline

Since time immemorial to the present, xʷməθkʷəy̓əm (Musqueam), Skwxwú7mesh (Squamish), and səllilwətaʔ (Tsleil-Waututh) Nations have shared this territory

Little Mountain
125m above sea level



Basalt Rock Quarry
1890-1911



Park Board acquires Little Mountain
1929



Canada's 1st civic arboretum
1949



2nd reservoir, tennis courts
1956



Concrete roof for reservoir
1965



Restaurant opens
1974



Reservoirs rebuilt
2001-2005



New roof at Bloedel
2014

1911

Open air reservoir at top of Little Mountain



1940

Name changed to Queen Elizabeth Park



1954

First quarry garden opens



1961

Smaller 'dry' north quarry garden opens



1969

Bloedel Conservatory opens



2005-2007
Renewal of top plaza & parking



2019
Bloedel 50th Anniversary



Background – Existing Policy



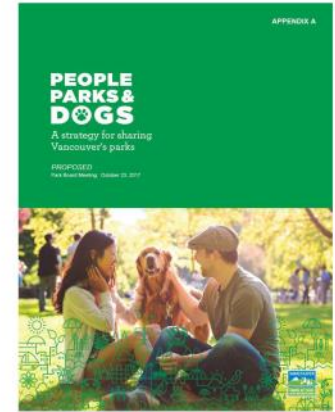
VanPlay



Biodiversity Strategy



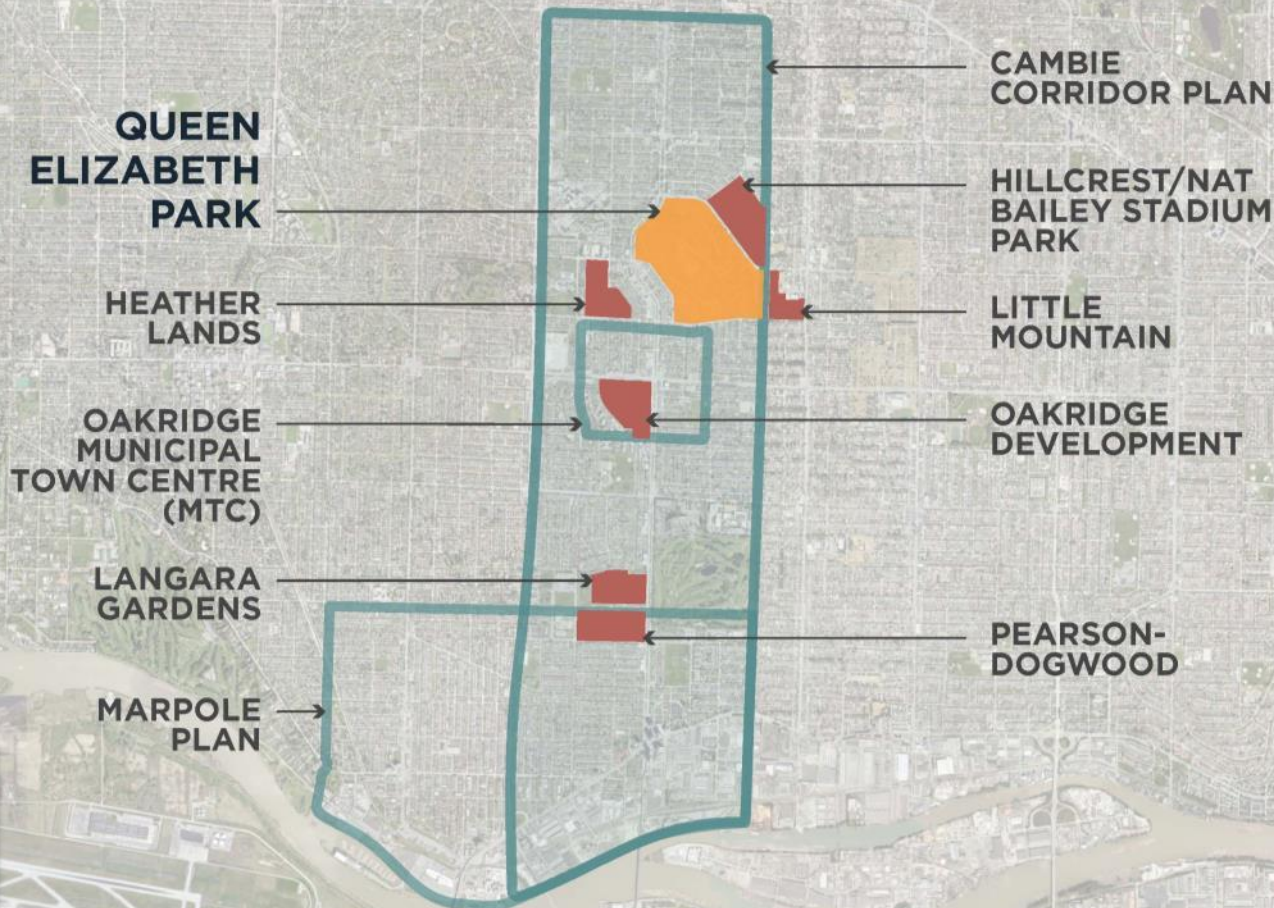
Urban Forest Strategy



People, Parks and Dogs

- Comprehensive master plan needed that anticipates growth and increased demand
- Need for preserving and enhancing the qualities of Queen Elizabeth Park
- Localized upgrades completed without a park-wide, master plan approach
- Consistent planning and design approach needed for implementation

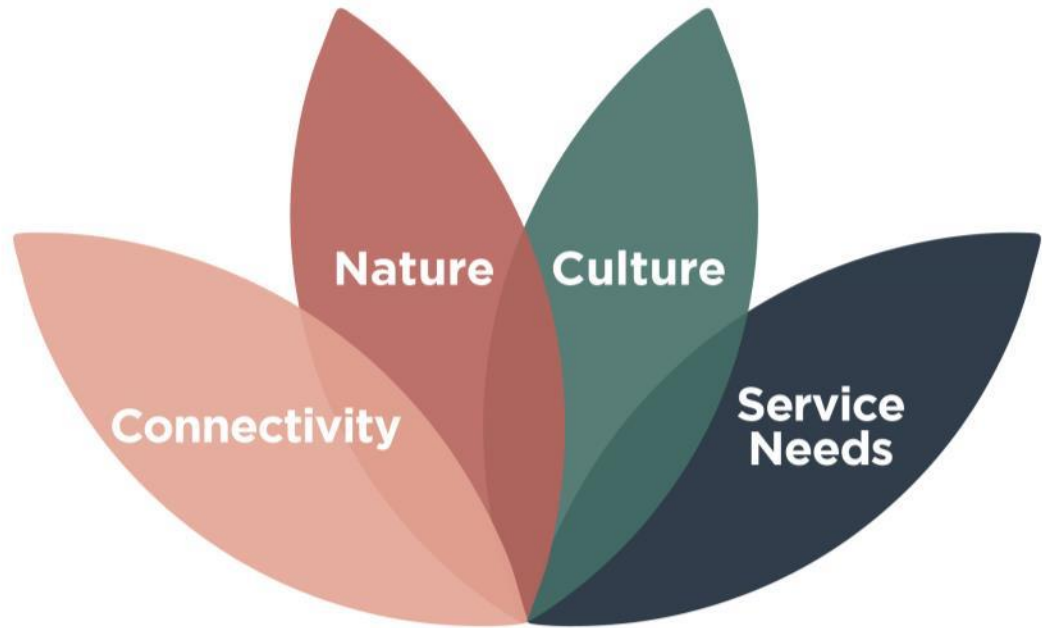
Why Master Plan Now? - Changes Ahead



+ 55,000
population



Four Key Themes





Culture

Discovering Identity and Recognizing Cultural Diversity

- QE Park is home to many significant cultural and natural assets
- QE Park hosts many cultural events
- Master plan will build on the understanding that arts and culture are fundamental to the quality of life



Nature



Enhancing Ecological Integrity, Access to Nature, Climate Change Resilience, and Water Conservation

- QE Park plays significant role in providing the citizens of Vancouver access to nature
- Potential for the natural areas of Queen Elizabeth Park to be improved, expanded and better connected to VanDusen
- Master plan will include urban forest management plan and horticulture standards review specific to the Park



Connectivity

Enhancing Internal Connectivity and Connecting parks, public spaces, and recreational nodes across the City

- Connectivity needed to the immediate context, improving park edges and accessibility
- Improved internal connectivity needed
- Master plan to support water management through connected open spaces and parks

VanPlay: City-Wide Connectivity





Service Needs

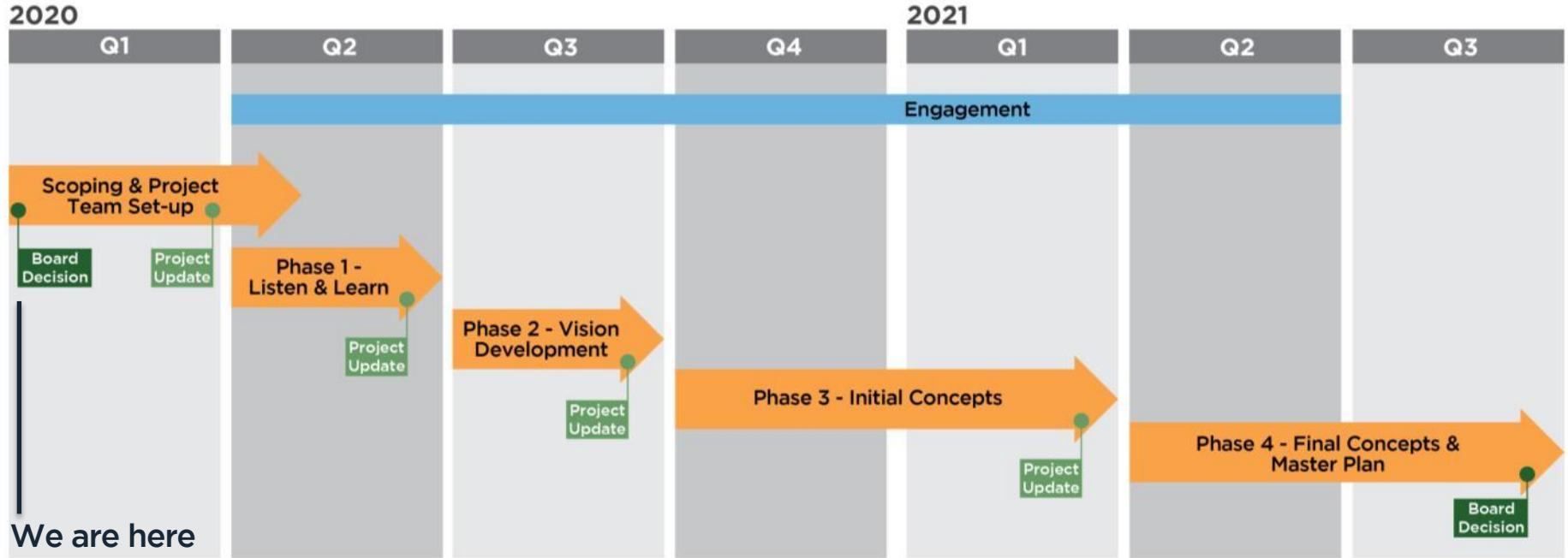
Addressing Recreation and Leisure gaps through Improvement of Facilities and Infrastructure

- Connected and enhanced recreational services
- Review of existing facilities
- Identification of opportunities to meet Asset Targets



Preliminary Project Schedule

Queen Elizabeth Park Master Plan Preliminary Project Schedule



1. RFEOI (request for expression of interest)
 - *Public. To all interested consultant teams*
2. Qualified teams shortlisted (3-6, +/-)
3. RFP (request for proposals) to shortlisted teams
4. Consultant team selected

THAT the Vancouver Park Board approve the scope of work and key themes of “Nature”, “Culture”, “Horticulture”, “Connectivity” and “Service Needs”, to inform the development of a Master Plan for Queen Elizabeth Park.

