



VANPLAY - PARKS & RECREATION SERVICES MASTER PLAN

Framework &
Implementation Update

Regular Board Meeting
Monday, October 19, 2020



PURPOSE OF THE PRESENTATION

- To introduce, for approval, the “VanPlay Framework” (as attached as Appendix A), which is a guide for referencing and implementing the master plan.
- Provide the first annual October 2020 update on the implementation of VanPlay.



AGENDA




1. VanPlay – The Framework

2. Implementation Update

- **Deliver Services Equitably**
 - Progress on the Initiative Zones
- **Welcome Everyone**
 - Progress on the Asset Targets
- **Weave the City Together**
 - Progress on Connectivity

3. Recommendation



A person wearing a traditional Indigenous costume, including a large, ornate headdress with a bird-like shape and a dark tunic with yellow tassels, is hanging from a rope in a forest. The person is positioned diagonally across the frame, with their arms raised and legs spread. The background is a dense forest with green foliage.

**Vancouver is within the
unceded traditional
territory of the
Musqueam, Squamish
and Tsleil-Waututh
First Nations, who still
live here today.**



VanPlay, the Park Board's Parks and Recreation Services Master Plan, is the organization's decision making guide

Priorities, tools and policies support the pursuit of equity, connectivity and access to parks and recreation for all.

VANPLAY REPORTS



A compendium to the current state of the City's parks and recreation system.

July 2018



Aspirational statements for the future

July 2018



Outlines three tools to create a more connected and equitable future; Equity, Connectivity and Asset Needs

October 2019



The plan for implementation and operationalization.

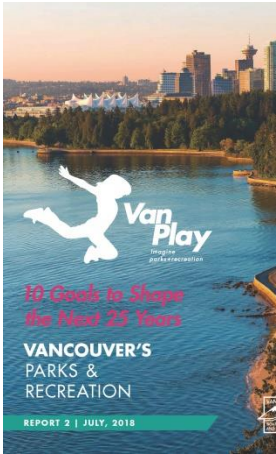
October 2019



VanPlay - The Framework



VANPLAY FRAMEWORK



**REPORT 4:
THE PLAYBOOK**

POLICY

COMMUNICATION

DATA + MAPPING

24 Approaches for Action

- Groundwork
- Parks
- Recreation
- Facilities
- Nature





The Park Board Strategic Framework (2012 – 2017) included:

- 1 Mission
- 1 Vision
- 4 Directions
- 9 Goals
- 27 Objectives



**Van
Play**

*Imagine
parks + recreation*

VANCOUVER'S
PARKS & RECREATION
FRAMEWORK





VanPlay Framework:

- 1 Mission
- 1 Vision
- 1 Purpose Statement
- 10 Goals
- 3 Directions (NEW)
- 3 Bold Moves
- 24 Approaches for Action

MISSION

Provide, preserve and advocate for parks and recreation to benefit all people, communities and the environment.

The background of the slide is a close-up, top-down view of a pottery wheel. A person's hands are visible, shaping a piece of white clay as it rotates. The wheel is mounted on a light-colored wooden base. To the right of the wheel, there are some pottery tools, including a wooden rib and a green-handled tool. The overall scene is well-lit, showing the texture of the clay and the wood.

VISION

To be the leader in parks and recreation by connecting people to green space, active living and community.

PURPOSE STATEMENT

All people and communities in Vancouver, regardless of their ethnicity, gender, religion, race, financial status, sexual orientation, abilities or age deserve the right to access quality parks, recreation and nature, and the opportunity to partake in social, cultural and recreational activities to acquire physical literacy skills, to express and enjoy culture, and to connect with community.



GOAL 1:

**GROW AND RENEW
PARKS, COMMUNITY CENTRES
AND OTHER ASSETS**

to Keep Pace with Population Growth
and Evolving Needs

GOAL 2:

**PROTECT EXISTING PARKS
AND RECREATION SPACES**

from Loss, Encroachment & Densification

GOAL 3:

**PRIORITIZE THE
DELIVERY OF RESOURCES**

to Where They are Needed Most

GOAL 4:

**FOCUS ON CORE
RESPONSIBILITIES**

of The Park Board, and be a Supportive
Ally to Partners

GOAL 5:

**ADAPT OUR PARKS AND
RECREATION AMENITIES**

to a Changing Climate

GOAL 6:

CREATE A GREEN NETWORK

That Will Connect Our Parks, Waterfront
and Recreation Areas

GOAL 7:

**RESTORE VANCOUVER'S
WILD SPACES**

and Vital Biodiversity

GOAL 8:

**FOSTER A SYSTEM OF PARKS
AND RECREATION SPACES**

That Are Safe and Welcoming to All

GOAL 9:

**SEEK TRUTH AS A FOUNDATION
FOR RECONCILIATION**

With Musqueam, Squamish,
Tsleil-Waututh Nations

GOAL 10:

**SECURE ADEQUATE
AND ONGOING FUNDING**

for The Repair, Renewal and Replacement
of our Aging Parks and Recreation System



VANPLAY FRAMEWORK



Direction: **Deliver Services Equitably**
A fair, and effective parks and recreation system

Bold Move: **Equity**

- Use the Equity Initiative Zones map to prioritize resources and service delivery
- Work inclusively to address inequities
- Identify and challenge colonial structures
- Nurture partnerships where values of access, inclusion and equity are shared

Approaches for Action

DELIVER SERVICES EQUITABLY

A fair, and effective parks and recreation system



Approaches for Action

- Articulate principles, values, and approaches by developing a robust policy framework
- Support evidence-based decision making by collecting and managing data and information.
- Focus reconciliation efforts on decolonizing the Park Board and relationship building with Musqueam, Squamish, and Tsleil-Waututh First Nations.
- Strengthen and expand partnerships to build capacity and clarify roles.

VANPLAY FRAMEWORK



Direction: **Welcome Everyone**

Parks and recreation experiences that improve quality of life.

Bold Move: **Asset Needs**

- Meet the Asset Targets by increasing the capacity and quantity of space, amenities and facilities
- Provide safe, clean and welcoming parks and recreation spaces.
- Reduce barriers to access
- Listen, learn and co-create to understand and meet community needs

Approaches for Action

WELCOME EVERYONE

Parks and recreation experiences that improve quality of life.



Approaches for Action

- Improve the safety, cleanliness and physical accessibility of all parks to increase access for all.
- Provide excellent customer service by enhancing communication with the community, our partners and stakeholders.
- Conduct meaningful, wide reaching and effective community engagement through innovative opportunities and methods.
- Foster an ethos of stewardship and community development which engages people, community groups and organizations in caring for and about parks and recreation.
- Respond to challenges and future trends through proactive park design, operations and maintenance practices.

WELCOME EVERYONE

Parks and recreation experiences that improve quality of life.



Approaches for Action

- Provide a wide variety of park types, spaces and experiences that reflect the communities they serve.
- Increase the capacity, quality and diversity of recreation amenities through strategic management and investment.
- Support a lifelong pursuit of sport and recreation for all ages and abilities.
- Support access to sustainable, local and healthy food.
- Expand access to recreation facilities to keep up with population growth and changing needs.
- Enhance existing facilities to create welcoming spaces and amenities which appeal to a wide range of recreational interests and are accessible to all.

VANPLAY FRAMEWORK



Direction: **Weave the City Together**

Parks, nature, recreation and culture integrated into everyday life.

Bold Move: **Connectivity**

- Provide routes to walk or roll to, and through, parks and recreation places
- Thread the unique history of the land, place, and culture into planning, design and activities
- Provide amenities and places which are flexible to different uses and deliver multiple functions
- Reconnect landscapes by improving the flow and quality of rainwater
- Connect and enrich ecosystems throughout the city

WEAVE THE CITY TOGETHER

Parks, nature, recreation and culture integrated into everyday life.



Approaches for Action

- Protect and acquire park land to provide access to space for sport, recreation, culture and nature throughout the city.
- Enhance nodes and multi-modal connections to create a citywide network of parks and recreation.
- Advocate for the protection and enhancement of parks, recreation, and nature throughout the city as elemental parts of complete communities.
- Support diverse cultural visibility through arts, culture and storytelling.
- Protect and enhance the integrity of foreshores, waterways and beaches.

WEAVE THE CITY TOGETHER

Parks, nature, recreation and culture integrated into everyday life.



Approaches for Action

- Protect Vancouver's freshwater resources through ecological restoration, green infrastructure, and water conservation.
- Nurture, protect, and connect the city's ecological network and natural areas.
- Cultivate connection to nature through education, programming and stewardship.
- Grow and improve the health of Vancouver's urban forest.

VANPLAY FRAMEWORK

Diagnostic Tests



These tests help to assess if the proposed project or work aligns with the Park Boards values, intentions and therefore will further our goals as an organization.



VANPLAY FRAMEWORK



Diagnostic Tests

Decolonization Interrogation Questions

1. What issues have arisen in the past week?
2. What decisions were made?
3. Who made them?
4. Who provided the information that informed that decision?
5. Where are the pressures come from?

Learning

We consent to learn in public.

We will make mistakes.

We will sit with those mistakes, be transparent about them, and use them both to learn and to teach.

Our mistakes will be diagnostic tools.

Park Board Reconciliation Mission, Vision and Values

VANPLAY FRAMEWORK

Diagnostic Tests



VanPlay Test

1. Does this align with the VanPlay Framework?
2. Does this advance the VanPlay goals?
3. Does this increase the capacity or quantity of assets, amenities or facilities to help meet 2040 Asset Targets?
 - a. If it is a strategy: does it outline steps to deliver on an asset target? If the subject does not have an asset target, can this strategy create new asset target/s?
4. Is this located in (or does it serve) an Initiative Zone?
5. Does this comprehensively consider equity and increasing equitable provision of services into the future?

VANPLAY FRAMEWORK

Diagnostic Tests



VanPlay Test *(cont.)*

6. How does this enhance connectivity? Consider;
 - a. Flow of water
 - b. Ecosystem connectivity
 - c. Vibrant, active communities
 - d. Sense of place
 - e. Creating opportunities for collaboration
7. Does this take a “multiple benefits approach”?

VANPLAY FRAMEWORK

Diagnostic Tests



VanPlay Test *(cont.)*

8. Could an outcome or an output be a:
 - a. Policy or guideline, which articulates how decisions consistent with this work could be made into the future?
 - b. Communication tool, which will make sharing information on this topic easier?, and/or
 - c. Data set or map, either new or an update to existing information?
9. Is this something we said we would do? For example;
 - a. Action to implement a Bold Move, and/or
 - b. Initiative listed in the Playbook



2020 Implementation Update

2020 IMPLEMENTATION UPDATE



VanPlay sets clear criteria for the prioritization of resource allocation and to thoughtfully meet the needs of the community even in periods of uncertainty.

While the COVID-19 Global Pandemic could not have been predicted, VanPlay tools and approaches have proven useful and effective in the organisation's response.



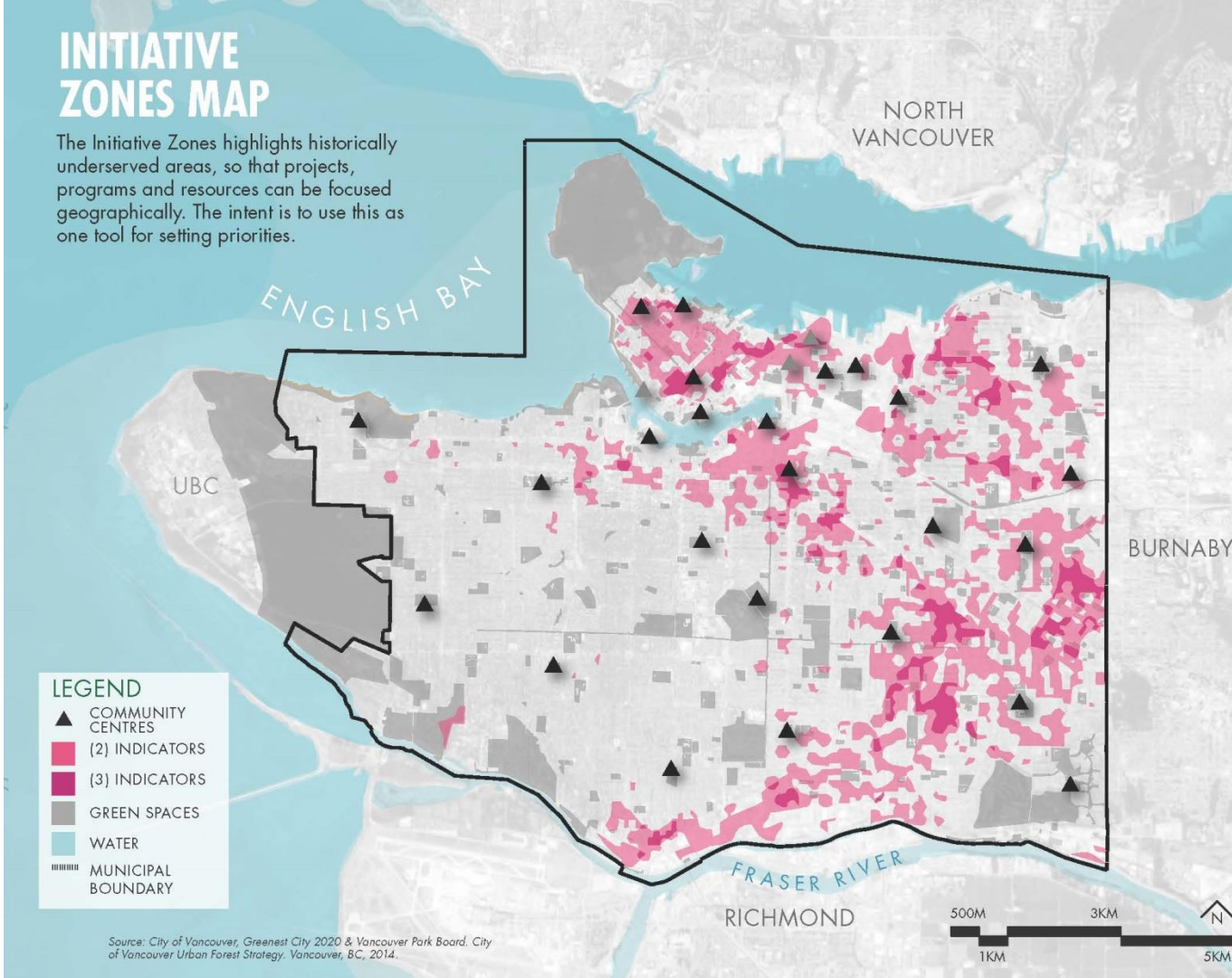
Deliver Services Equitably

DELIVER SERVICES EQUITABLY

Use the Equity Initiative Zones map to prioritize resources and service delivery

INITIATIVE ZONES MAP

The Initiative Zones highlights historically underserved areas, so that projects, programs and resources can be focused geographically. The intent is to use this as one tool for setting priorities.

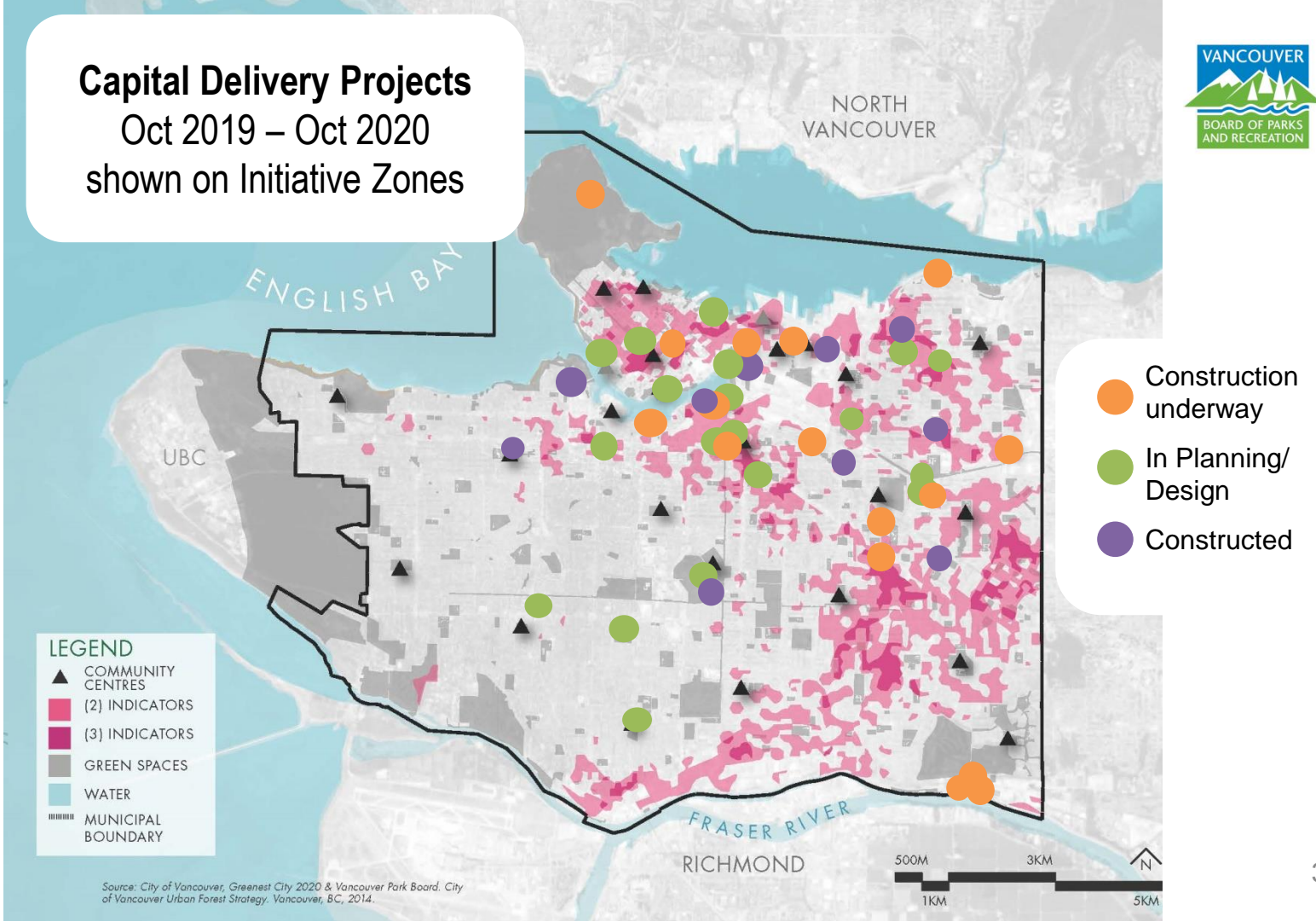


Source: City of Vancouver, Greenest City 2020 & Vancouver Park Board. City of Vancouver Urban Forest Strategy. Vancouver, BC, 2014.

DELIVER SERVICES EQUITABLY

Use the Equity Initiative Zones map to prioritize resources and service delivery

Capital Delivery Projects Oct 2019 – Oct 2020 shown on Initiative Zones



Bold Moves in a Pandemic

The response, reopening and recovery work throughout the pandemic thus far has prioritized effort based on the need to *Deliver Services Equitably*:

- Prioritized reopening
 - Childcare
 - Priority programming for vulnerable populations (seniors, at risk youth).
- Outreach to youth for the summer programming/camp/workers - framework to determine high need. Seven youth workers returned.

Brewers Park Renewal

Working with community group to create Indigenous education planting area within renewed park.

Staff recently facilitated a ceremony on site with representatives of the Indigenous community to cut down cedar trees to donate raw materials to be used for carving.



“Access to Nature”, What does it mean, and can we map it?
UBC Sustainability Scholar Project by Jo Fitzgibbons



Restorative Natural Areas (RNA)



Quiet, minimal crowding, limited/no road noise or interruptions



Minimal built infrastructure



Contains natural elements like water features, large trees, wildflowers



Unlikely to be a pocket park, green roof, sport field, playground, etc...
(but these are still important for other reasons.)



Co-benefits for conservation + habitat restoration

“Access to Nature”, What does it mean, and can we map it? UBC Sustainability Scholar Project by Jo Fitzgibbons

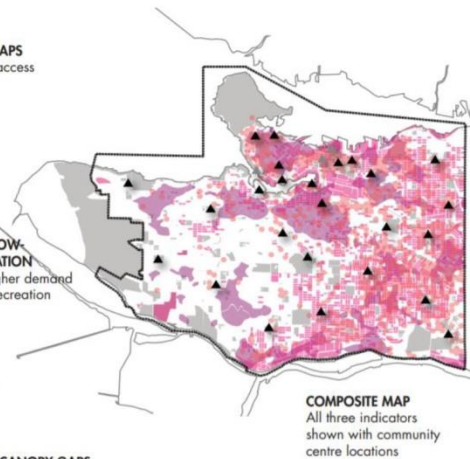
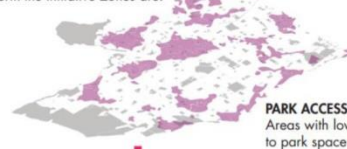


What might a map like this look like?

A new layer for the Restorative Natural Area index

INITIATIVE ZONES MAPPING

The three indicators that form the Initiative Zones are:



RESTORATIVE NATURAL AREA

Asset Inventory and Management Plan

Work is ongoing with many of the asset categories either complete or near completion.

Staff expect to have the inventory completed in 2021 and integrated into the Asset Management Plan (AMP).

The AMP project will determine gaps in asset data which can be address as part of future data collection

Welcome Everyone



WELCOME EVERYONE

Provide excellent customer service by enhancing communication with the community, our partners and stakeholders.

www.vancouver.ca/vanplay



Strategic Bold Moves

VanPlay is centered around three Bold Moves, that support the pursuit of equity, connectivity, and access to parks and recreation for all.

In combination, they support better strategic decision making by helping to prioritize projects, operations, and funding.

These three bold moves are how the organization will deliver on the [10 Goals to Shape the Next 25 Years](#).



[Equity in parks and recreation](#)

Starting great conversations to address historical inequities.



[Parks and recreation asset needs](#)

Setting asset targets and articulating demand for amenities, spaces, and facilities.



[Connectivity of parks and recreation](#)

Weaving the city together with parks and recreation.

- + What are assets
- + Why set targets?
- + How do we meet the targets?

[View the full chapter B \(4 MB\)](#)



[Action sports \(372.78 KB\)](#)

Increase the quantity of skate parks, as well as to increase the quality and diversity of design.



[Aquatics \(52.02 KB\)](#)

Deliver a wide range of accessible aquatic experiences that support Vancouver as a highly-liveable, world-leading coastal city.



[Ball diamonds \(43.67 KB\)](#)

Renew the inventory to improve the quality and capacity of existing ball diamonds.



Bold Moves in a Pandemic

A commitment to keeping barriers to services as low as possible throughout the pandemic ensures that the Park Board continued to

Welcome Everyone:

- 80/20 reservations/drop ins – to provide access for those without tech
- Online bookings with Leisure Access Program priority
- REFM maintenance – retrofits on pools and rinks during closure
- “The new normal” BCRPA guidelines for best practice
- Rangers as physical distancing advocates

WELCOME EVERYONE

Respond to challenges and future trends through proactive park design, operations and maintenance practices.

Bold Moves in a Pandemic

Responded to new realities with effective pivots which made good use of resources in a challenge period, such as;

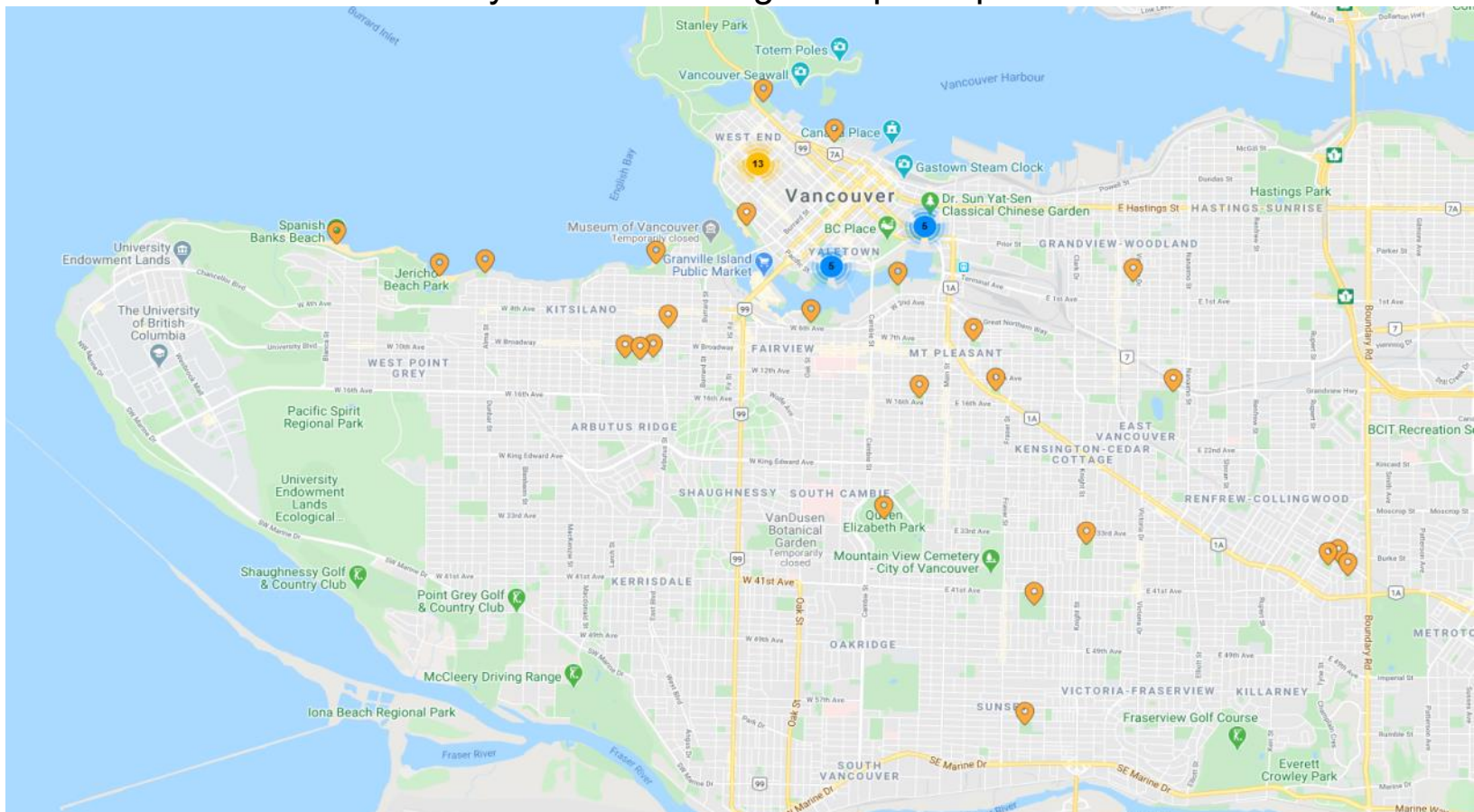
- Pollinator meadow habitat with reduced mowing resources
- Added vegetable production from Sunset Yard
- Langara Golf Course producing meals for those in need



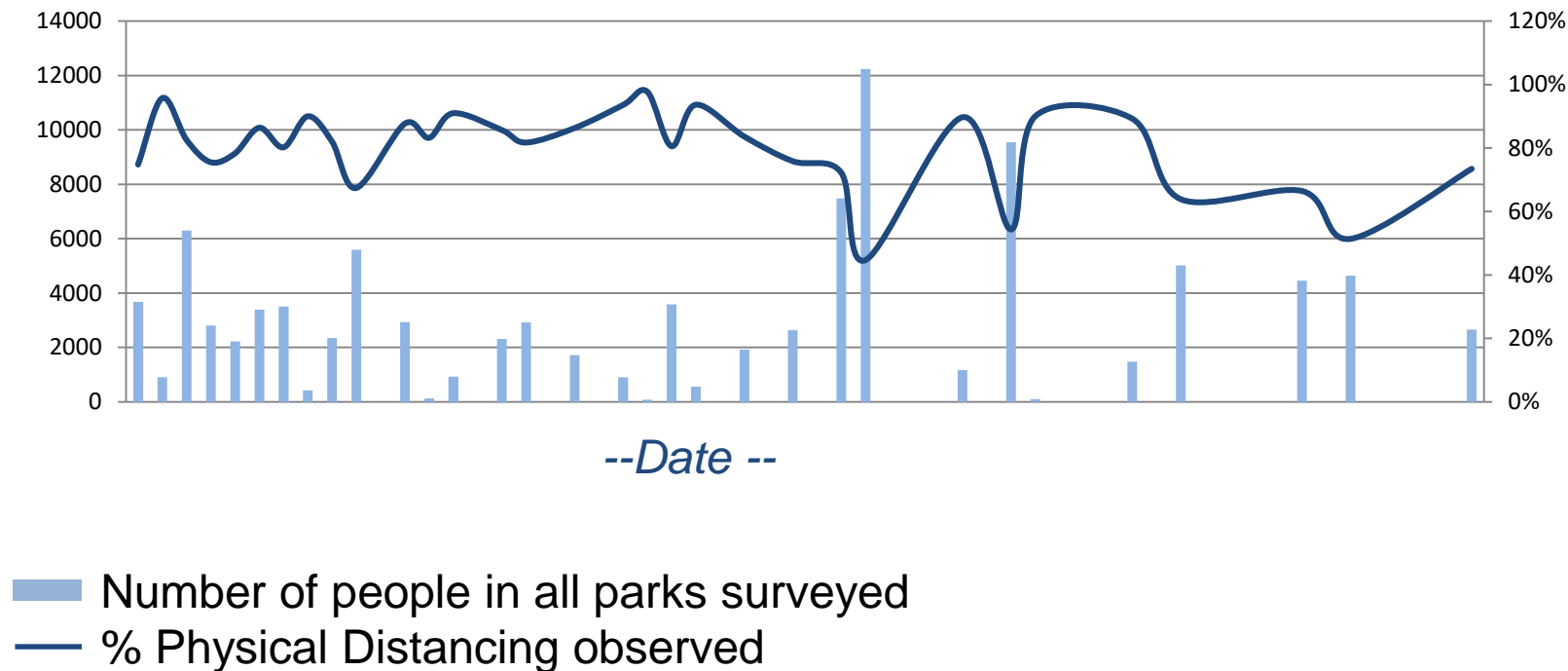
WELCOME EVERYONE

Provide safe, clean and welcoming parks and recreation spaces.

Park Data Collection – Physical Distancing and “pinch points”



Park Data Collection - Results



WELCOME EVERYONE

Meet the Asset Targets by increasing the capacity and quantity of space, amenities and facilities

Capital Delivery Projects Oct 2019 – Oct 2020 shown on Initiative Zones

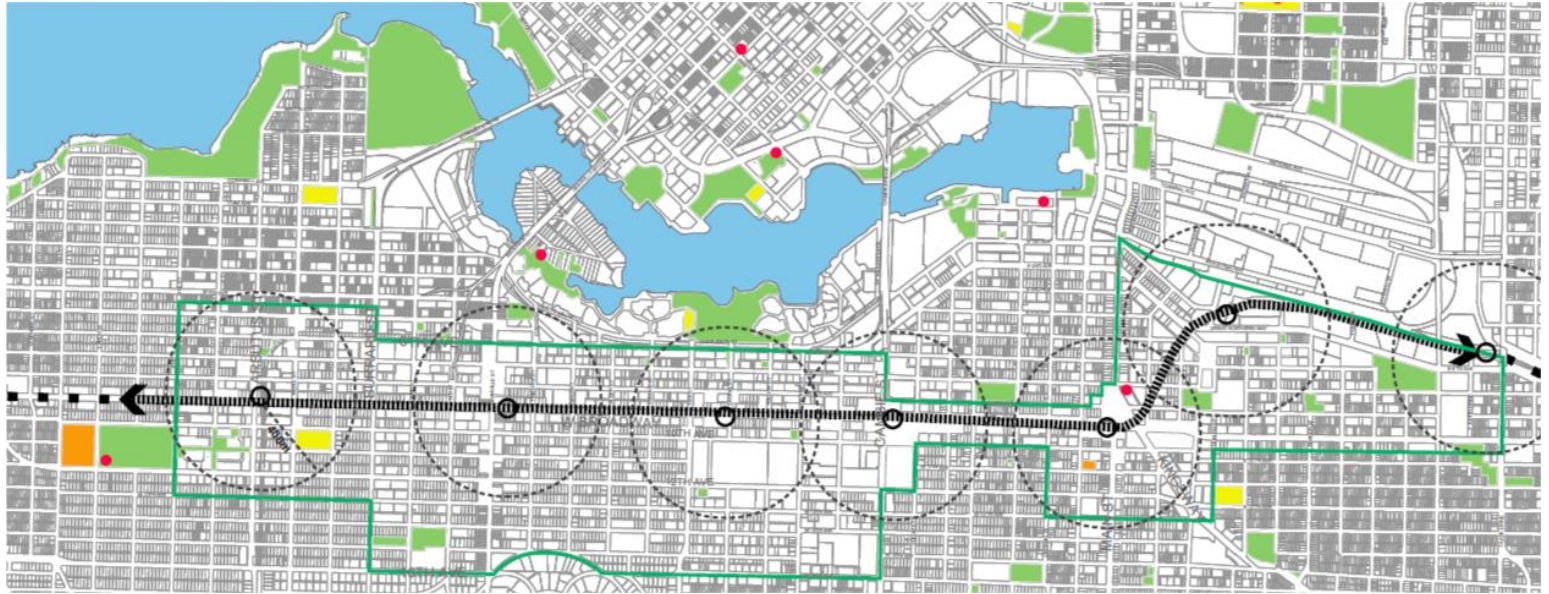


- Construction underway
- In Planning/ Design
- Constructed

Source: City of Vancouver, Greenest City 2020 & Vancouver Park Board. City of Vancouver Urban Forest Strategy. Vancouver, BC, 2014.

Broadway Plan

Staff are working with the City, towards policy that will protect existing parkland, grow park space and create a green network connecting park spaces to False Creek.



WHAT ARE ASSET TARGETS?



The Park Board has many “assets” from trails to tennis courts and ice rinks.

The targets take stock of these assets, consider their future needs and sets goals for what needs to be done to provide excellent service.

The VanPlay Asset targets are a tool which help the Park Board **Welcome Everyone.**



PARKS



2020 total: **1,343** ha
An increase of
10,186 sqm
over 2019, to date.



2040 Asset Targets

- A citywide average of 1.1 ha of neighbourhood* parkland per 1000 people.

**Neighbourhood parkland includes all park spaces which are not considered to be "destination" parks.*



Groundbreaking at Smithe and Richards Park (Jan 2020)



Rendering of upcoming Smithe and Richards Park

COMMUNITY CENTRES

INCREASE
SUPPLY

INCREASE
RENEWAL

INCREASE
DISTRIBUTION

2040 Asset Targets

- Maintain the current citywide average of 1.2 sq.ft. of community centre space per person (excluding rinks and pools).
- Improve resident level of satisfaction with community centre facilities.
- Renew an average of two existing community centres per capital plan (50-year life cycle) resulting in at least 70% of facilities being in "good" or "fair" condition (currently 45%).

On Track

WELCOME EVERYONE

Meet the Asset Targets by increasing the capacity and quantity of space, amenities and facilities

COMMUNITY CENTRES



- Marpole Community Centre Renewal and new outdoor pool in design phase. Projected opening 2025.
- The community centre strategy is underway to identify priorities and timelines for renewal.
- Approval of preliminary development permit for Plaza of Nations in August 2020, including new 40,000sf community centre.

LOCAL FOOD



- A new Local Food Action Plan is underway to improve access to food and a wider variety of affordable food options at or near parks and community centres.
- Creekside Community Garden planter upgrades to trial metal
- Community garden and indigenous education garden under construction at Brewers Park
- Staff working with a group in Hastings Sunrise on new garden Expression of Interest
- Fieldhouse activation (Jan 2019 to Dec 2021) - 4 field houses dedicated to local food

2040 Asset Targets

- All new community gardens on Park Board-managed land have at least 50% of total area dedicated to collective food growing.
- Complete at least one project per year that supports sharing and gathering to cook or eat food in parks.

On Track



NATURAL AREAS



- Restored or enhanced 2 ha in 2019 and projected 2 ha + 3 ha in 2020 (including at Fraserview Golf Course)
- 3 ha of maintained turf to naturalized (low / no mow) zones in 2020 (in park locations city wide)
- UBC Sustainability Scholar Projects:
 - *'What is "Access to Nature" and can we map it?'*
 - *'Biodiversity of Golf Courses'*
 - *"Natural Capital Valuation"*

2040 Asset Targets

- Restore or enhance 5 ha of natural area each capital plan (1-3 ha per year).
- Add at least 5 projects for bird and pollinator habitat each year.
- Grow environmental stewardship (volunteers and advocates) by 25%.

Target
exceeded
for 2020





Queen Elizabeth Park pollinator meadows from low / no mow areas

PLAY AREAS



- China Creek North and Kaslo Playgrounds completed.
- New playgrounds at Brewers, Jones and Charleson parks are under construction.
- Thunderbird Community Centre and RayCam Community Centre play areas nearing completion.

2040 Asset Targets

- Provide universally accessible play features at all play areas.
- Provide at least 5 fully universal accessible destination play areas (in diverse geographic areas: NE, SE, SW, NW and Downtown).



On Track

China Creek North, Playground

Kaslo Park Playground

AQUATICS



The Aquatics Asset Target has been updated to reflect VanSplash, Vancouver's Aquatic Strategy



The full Asset Target for Aquatics can be found on page 56 of Report 3 "Strategic Bold Moves"

2040 Asset Targets

- 5.0 swims per capita* per year by 2045
- One aquatic innovation per capital plan

**Recognizing that full pools can be perceived by some as over-crowded, the strategy recommendations support a capacity of between 5.0 and 6.0 swims per capita.*

New Target Added



COURT SPORTS



- 8 new dedicated pickleball, 16 resurfaced tennis and new wider gates for improved accessibility added at Queen Elizabeth Path
- 6 new shared pickleball at Pandora Park
- 2 new shared pickleball at Cedar cottage
- New tennis, basketball and pickle ball at Brewers Park (under construction)
- Tennis courts and fencing are being renewed at Kaslo Park (under construction)

2040 Asset Targets

- Improve existing tennis court quality to achieve 70-80% in good condition.
- Add lines and equipment to accommodate pickleball at 4 new locations. [Add 2 pickleball court locations per capital plan.]

On track



Cedar Cottage Courts

FIELD SPORTS & BALL DIAMONDS



- Slocan Park field renewal is complete (upgraded one existing Grade A and a Grade B and C fields)
- Montgomery field renewal and diamond upgrades have been awarded and will be complete in 2021 (50% increase in Grade A field)
- Field Sport Strategy underway

2040 Asset Targets

- Improve overall quality of existing ball diamonds to achieve 70-80% of ball diamonds in good condition.
- Increase the hours of play by +25%.

2040 Asset Targets

- Increase the available hours of play by 25%.
- Increase the number of Grade A* or higher, turf fields by 15%.

On Track



SKATE PARKS, BIKE PARKS & PARKOUR



- Coopers Park parkour
- Vanier Park Pump track
- Skate Plaza upgrades
- Skateboarding Strategy underway

2040 Asset Targets

- Add one additional skate park and two additional skate features (dot or spot) per capital plan.
- Provide at least one year-round (i.e. covered) skate park.
- Add two more parkour areas and two more bike skills tracks.

On Track



SPRAY PARKS



- Connaught Spray Park opened in July 2020 - renewed to improve accessibility, and reduce water consumption.

On Track



2040 Asset Targets

- Add one new or renewed spray park per capital plan.

Connaught Splash Pad

TRACK AND FIELD



The Track and Field Asset Target has been updated to reflect the outcomes of the Track and Field Strategy.



The full Asset Target for Track and Field can be found on page 77 of Report 3 “Strategic Bold Moves”

2040 Asset Targets

- 1.5 Category A or B* facilities for every 100,000 residents of Vancouver by 2040.
- Aim for balanced distribution of Category A and B facilities*, in all four quadrants of the city.

* As defined on page 53/54 of the Track and Field Strategy (2019)

New Target
Added

Weave the City Together



Bold Moves in a Pandemic

During the early months of the pandemic, parks saw a substantial increase in use as people looked to exercise and get fresh air, within their neighbourhoods.

A renewed interest in the places which *Weave the City Together* put the spotlight on the need for good quality, accessible parks within a short walk from home.

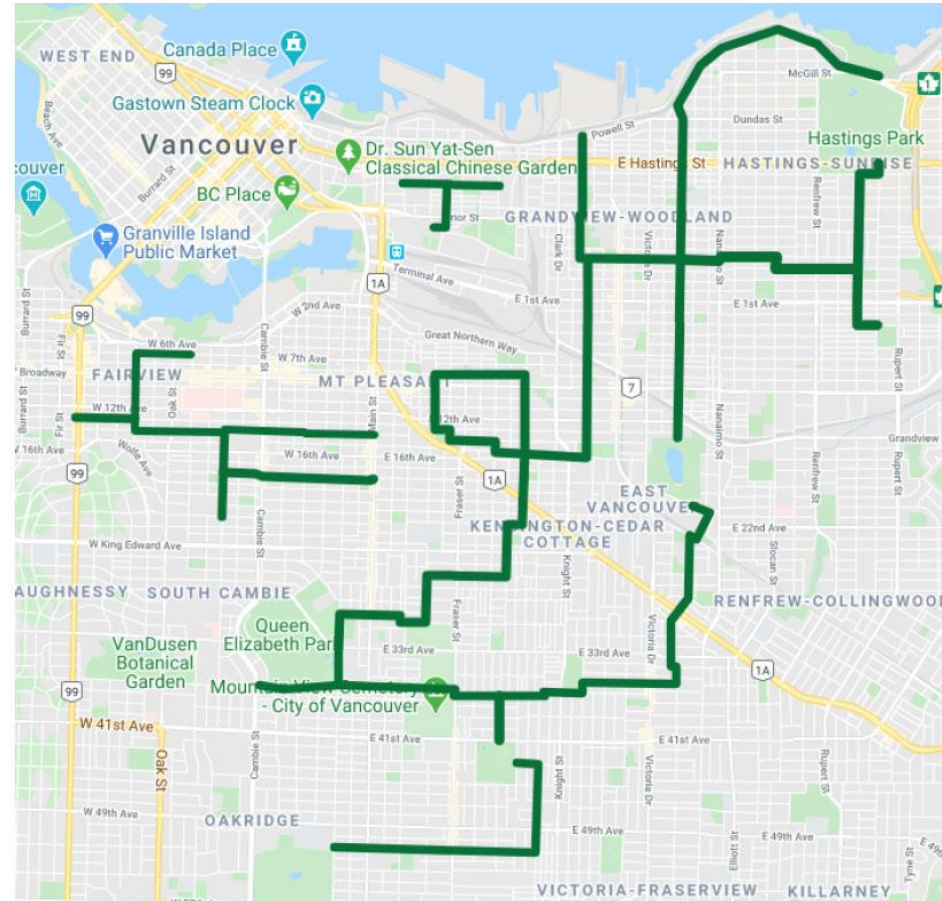
Slow Streets



Slow Streets

What We Did

- Installed 40+ km temporary traffic calming on local streets
- Traffic calming to support physical distancing, exercise, and access to local destinations
- Routes were selected by considering areas of the City with fewer mobility options and greater need for access to green space



WEAVE THE CITY TOGETHER

Parks, nature, recreation and culture integrated into everyday life



WEAVE THE CITY TOGETHER

Parks, nature, recreation and culture integrated into everyday life

GUIDING PRINCIPLES

This vision is guided by four main principles:

1. Vibrant, active communities



2. Flow of water



3. Sense of place



4. Thriving ecosystems



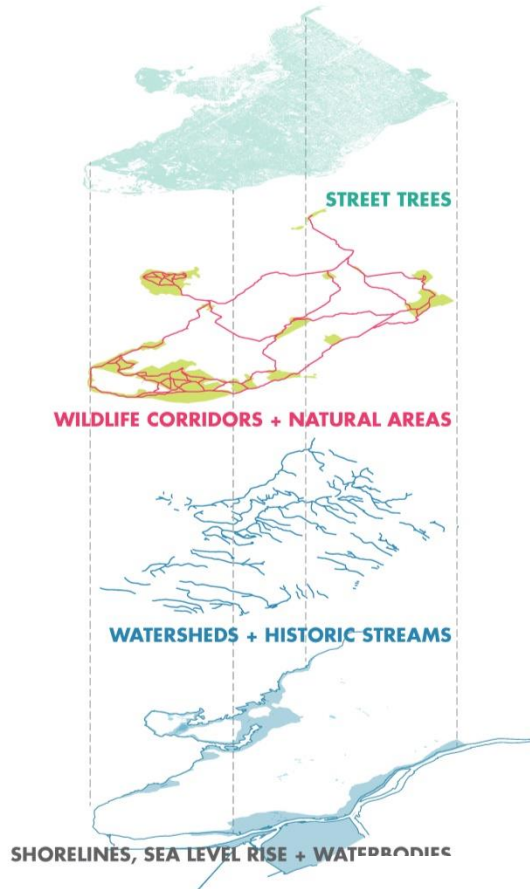
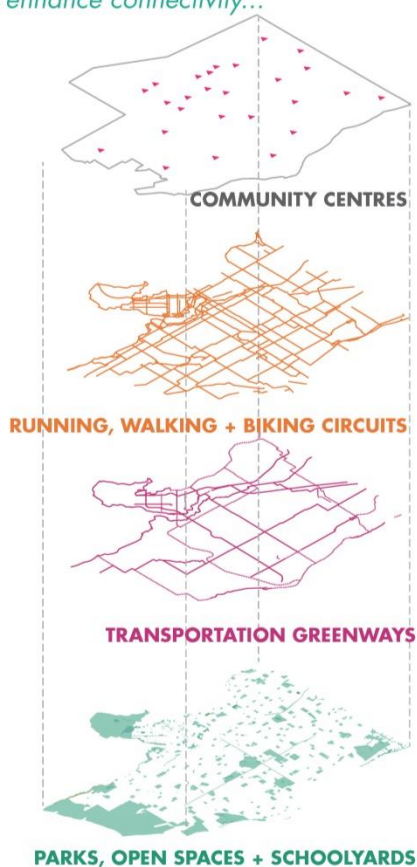
WEAVE THE CITY TOGETHER

Parks, nature, recreation and culture integrated into everyday life

BACKGROUND

LAYERS OF CONNECTIVITY

A sample of components we are layering to create and enhance connectivity...



WEAVE THE CITY TOGETHER

Reconnect landscapes by improving the flow and quality of rainwater

ONE WATER



Planning
Vancouver
Together

Vancouver Plan

Vancouver Plan's Provisional Goals



RECONCILIATION



SUSTAINABLE



COMPLETE + CONNECTED



THRIVING NATURAL SYSTEMS



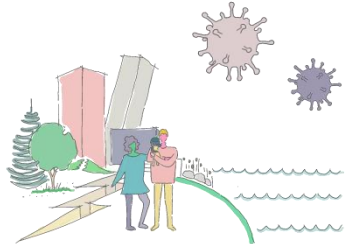
EQUITABLE + INCLUSIVE



AFFORDABLE, DIVERSE + SECURE



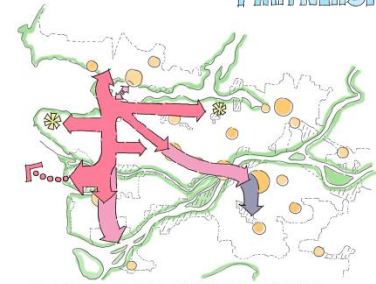
TRANSPARENT + COLLABORATIVE PARTNERSHIPS



PREPARED + RESILIENT

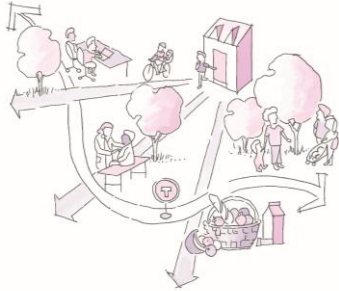


DIVERSE + HEALTHY ECONOMY



REGIONAL ALIGNMENT

Vancouver Plan's Provisional Goals



COMPLETE + CONNECTED

7. Creating Complete, Connected, and Culturally Vibrant Neighbourhoods

- Enabling walkable access to social, artistic, cultural, retail and green spaces
- Improving active transportation options and addressing issues of traffic congestion
- Linking region-serving business areas, production areas and cultural districts

8. Re-Establishing Thriving Urban Natural Systems

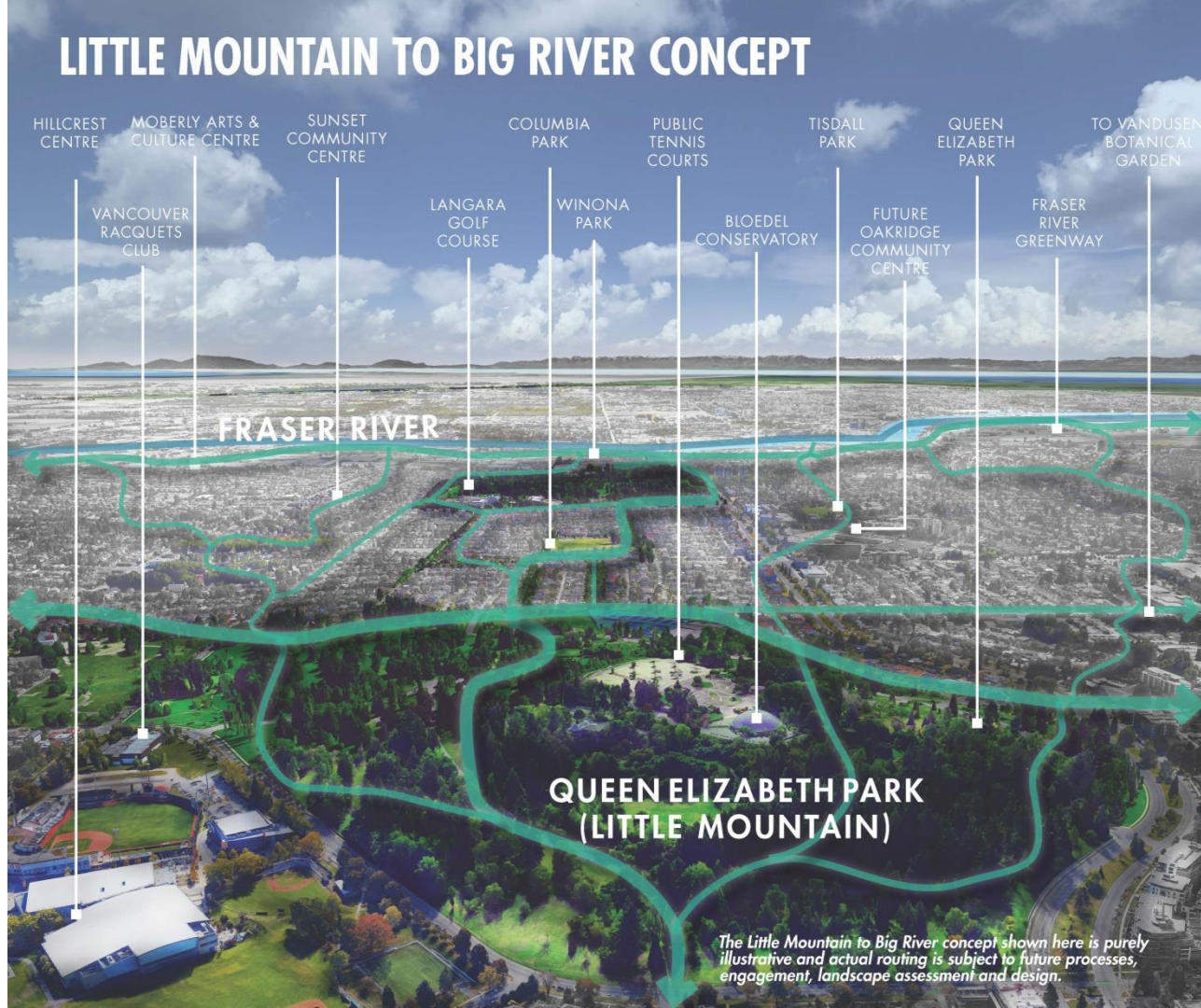
- Connecting and enhancing ecological corridors and biodiversity throughout neighbourhoods
- Integrating green infrastructure in development and our public realm
- Working in partnership with Musqueam, Squamish, and Tsleil-Waututh Nations to collaborate on strategies to enhance the health of the land, waterways, foreshores



THRIVING NATURAL SYSTEMS

WEAVE THE CITY TOGETHER

Parks, nature, recreation and culture integrated into everyday life



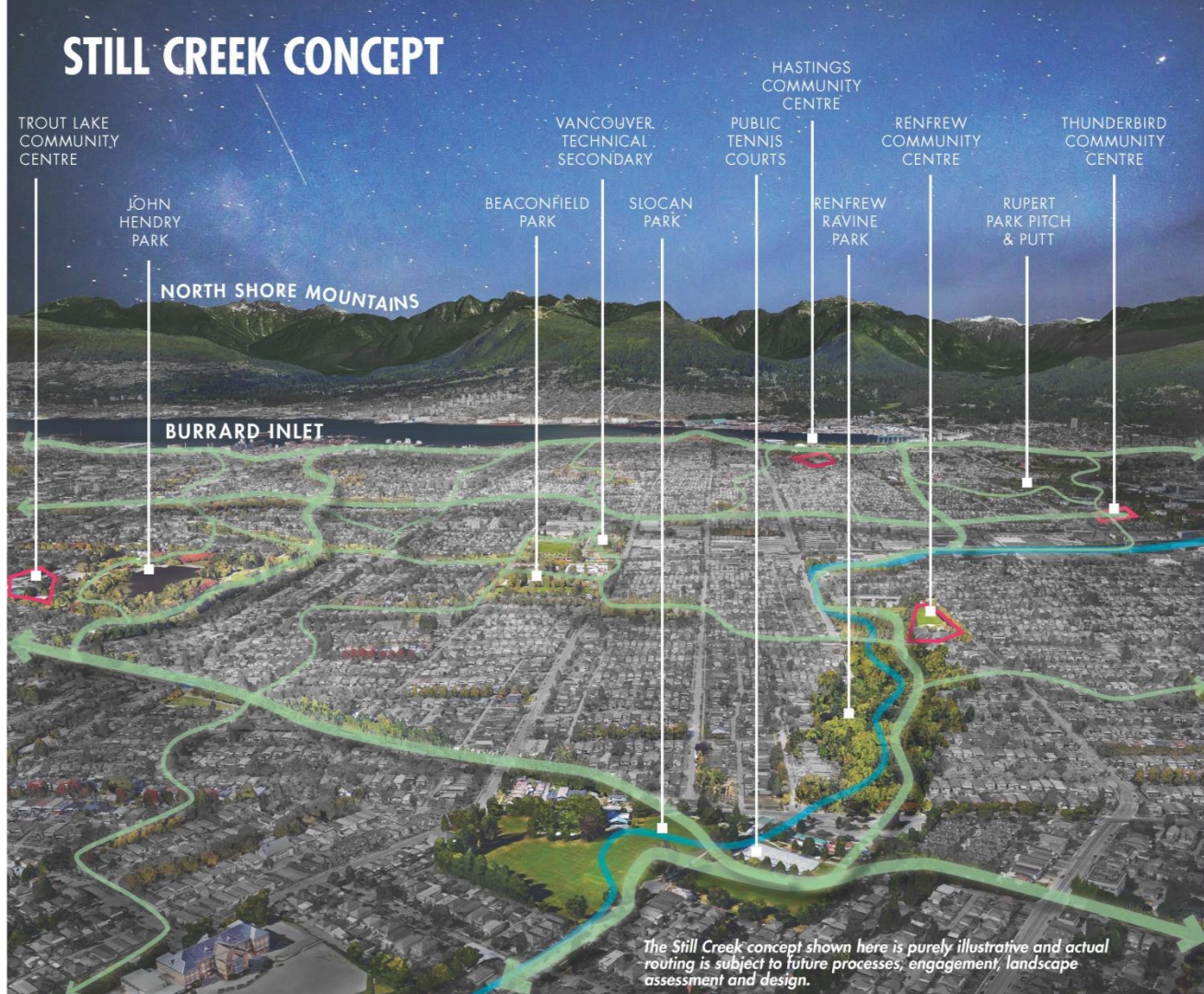
LITTLE MOUNTAIN TO BIG RIVER



- Queen Elizabeth Park Master Plan
- Rainwater/Parks Integration: Queen Elizabeth Park via Alberta St to Columbia Park
- Cambie Integrated Water Management Plan

WEAVE THE CITY TOGETHER

Parks, nature, recreation and culture integrated into everyday life



TATLOW CREEK DAYLIGHTING



- Rainwater integration into John Hendry, Charleson, and Columbia parks conceptually approved Feb 2020
- Tatlow Creek design approved March 2020:





Van Play

Imagine
parks+recreation

RECOMMENDATION

- A. THAT the Vancouver Park Board approve the “VanPlay Framework”, as outlined in this report and as attached as Appendix A, as a guide for referencing and implementing the master plan; and
- B. THAT the Board receive for information the October 2020 annual update on the implementation of VanPlay, as outlined in this report.

