



November 24, 2020

TO: Park Board Chair and Commissioners  
FROM: General Manager – Vancouver Board of Parks and Recreation  
SUBJECT: 2021 Fees and Charges - Parks and Recreation

---

## RECOMMENDATION

THAT the Vancouver Park Board approve changes to the 2021 Fees and Charges, as summarized in the body of this report and detailed in Appendix A.

## REPORT SUMMARY

It is Park Board policy that fees and charges for Park Board services are established on a cost recovery basis for core parks and recreational services, while remaining comparable to other municipalities and private providers. For services considered to be outside of the core service areas, fees and charges are set close to market to enable the Park Board to generate revenues to subsidize costs across other service areas.

For 2021, the baseline proposed fee increase required to support increasing costs has been determined to be 2%; fee increases that are higher than that general 2% are discussed in the body of the report. Full details of all fees and charges are detailed in Appendix A.

The proposed changes for the 2021 Fees and Charges are consistent with Park Board policy and reflect a careful consideration of market and customer impacts, including a focus on affordability. Revenue generated by the proposed fee increases in this report have been incorporated into the proposed 2021 Operating Budget and contribute between approximately \$700,000 - \$900,000 toward covering the impacts of estimated cost increases.

## POLICY

The Park Board policy on user fees & charges was most recently [updated](#) as part of the [2019 Fees & Charges Board report](#) and is summarized as follows:

- User fees and charges will be levied to recover all or a portion of overall operating costs.
- All fees and charges will be adjusted to accommodate changes in the marketplace and in operating and maintenance costs.
- The General Manager will have the authority to waive or reduce fees and alter fees for services for promotion purposes and to quickly establish fees for experimental services.
- Fees may be revised for people with accessibility issues and their attendants, families, groups, frequent users, low priority times, promotions and marketing strategies.
- Each ice rink and indoor pool will include at least four hours of low-cost public sessions each week.

- Leisure Access Program (LAP) participants receive free access to public swimming and skating, and a reduction at Park Board operated fitness centres. Reductions are available for Flexipasses, swim lessons and skate lessons as well as a minimum of one recreation program per community centre per season at participating centres.
- Unless otherwise specified, fees are defined for age-based and family categories as follows:
  - Pre-school: 4 years of age and under
  - Child: 5 to 12 years inclusive
  - Youth: 13 to 18 years inclusive
  - Adult: 19 to 64 years inclusive
  - Seniors: 65 years and up
  - Family: 1-2 adults of the same household and their children.
- Where noted, to encourage family participation, family pricing is available; each person in the family pays the child rate, subject to a two-person minimum.
- An age-based fee structure will be maintained that provides the following general discounts from adult fees for recreation services:
  - Youth and Senior: 30% discount
  - Child: 50% discount

## BACKGROUND

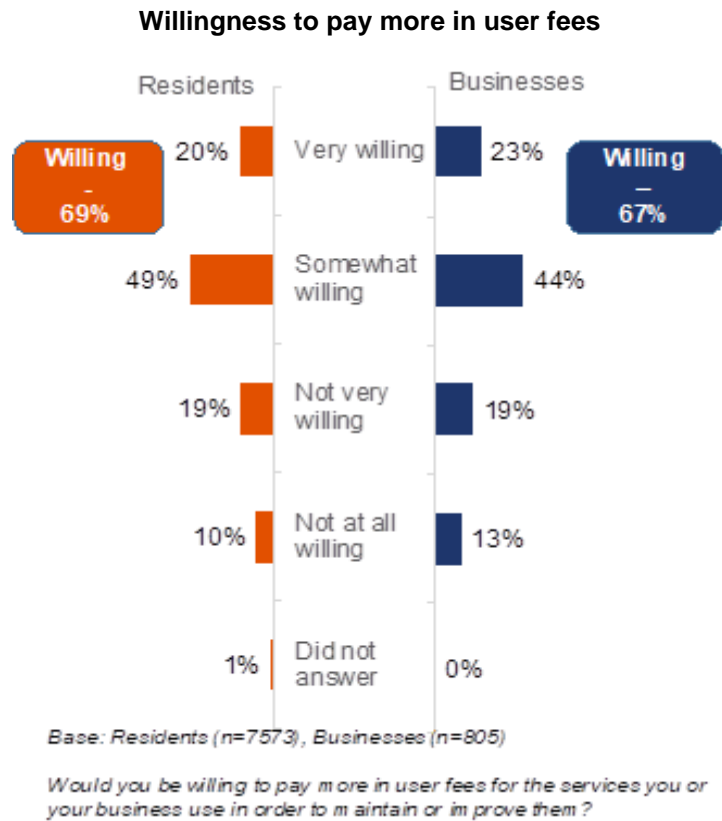
As detailed in the [Vancouver Charter](#) under section 488, subsections (6), (7) & (8) and section 490, the Park Board has exclusive jurisdiction over fees and rental charges in parks within the City of Vancouver.

In recent years, the Park Board has approved fees and charges prior to the start of the calendar year and in conjunction with the proposed annual operating budget submission to Vancouver City Council. Advance approval of Fees & Charges provides users with notice of expected fees and ensures the revenue estimates included as part of the annual operating budget submission incorporate planned changes to the Park Board's fee structures and rates.

As part of the City's engagement process for the 2021 budget, residents and businesses were asked their preferred approach to be taken by the City to balance its budget. Respondents were open to a variety of tools and, on average, the measures that residents and businesses supported the most are as follows:

- **Increase user fees** for City services that currently have fees (51% on average)
- Postpone **infrastructure projects** e.g. new amenities or major repairs (52%)
- Introduce **new user fees** for some City services that currently have no fees (47%)

Respondents were asked specifically about their support for increasing user fees for services they or their business use. As illustrated in Figure 1 below, over two-thirds (68%) of residents and businesses surveyed are willing to pay more in user fees. Businesses are somewhat more willing this year to pay these fees (67% vs. 61%), while residents remain the same (69% vs. 71%).



**Figure 1: 2021 Budget Engagement Survey Results**

## DISCUSSION

In preparing the recommended 2021 Fees and Charges, staff reviewed comparative market rates, considered effects of proposed fees on customers, and integrated implications from proposed fee changes into the proposed 2021 Parks and Recreation Operating Budget.

As described in the Park Board Fees and Charges Policy, a fundamental rationale for adjusting fees and charges is to ensure a reasonable recovery of associated operating costs. Given the projected reduction in revenue generated by the Park Board (~\$20 million), approximately 32% of the Park Board's proposed 2021 operating budget is funded by fees and charges compared to 47% in 2020.

As operating costs increase, similar increases to fees and charges are required to help maintain the high level of services provided by the Park Board. Increases in costs are primarily the result of wage increases including fringe benefits. In addition, many service areas will be affected by inflationary increases for supplies, materials and contracted services. To help offset these rising costs while maintaining high service levels, an increase of 2% to most fees and charges, as well as some higher increases in specific areas have formed the baseline for the proposed increases detailed in Appendix A and summarized in Table 1 below. Given the level of uncertainty with respect to our 2021 volumes and associated revenues, ranges of expected revenues are provided.

**Table 1: Proposed 2021 Fees & Charges**

Area	Proposed Rate Increase (Pre-Tax)	Revenue to Park Board
<b>Parking – Existing</b>	Various	\$225,000 - \$300,000
<b>Parking – Queen Elizabeth Park (New)</b>	-	\$100,000 - \$130,000
<b>Park Board Recreation Fees</b> Fees have been reviewed and increases are proposed in the ranges noted below; however, due to COVID-19 related requirements for registration and reduced facility capacity, predicting the revenue generated by any one fee increase is challenging.		\$180,000 - \$220,000
<b>Recreation Admissions &amp; Passes</b>	Most fees 2%	
<b>Park Board Recreation Lessons and Programs</b>	Most fees 2%	
<b>Park Board Recreation Rentals - Indoors</b>	Most fees 2%	
<b>Park Board Recreation Rentals - Outdoors</b>	Most fees 4%	
<b>Regulation Golf and Pitch &amp; Putt</b>	2%	\$160,000 - \$180,000
<b>Marinas</b>	2%	\$60,000 - \$70,000
<b>Destination Attraction Admissions and Event &amp; General Permits</b>	Most fees 2%	\$20,000 - \$40,000
<b>Total</b>		<b>\$745,000 - \$940,000</b>

The following section provides a brief description of the proposed fee adjustments by program area.

## **Parking**

### **Overview**

Paid parking is in place at a number of parks and community centres around the City and revenues generated are used to subsidize other program areas and services in parks and recreation. For 2020, parking revenue was budgeted at \$8 million; however due to COVID, there were lot closures in March as part of our efforts to support physical distancing, reduce crowding at destination parks & beaches, and encourage use of neighbourhood parks. The lots were reopened in May, but have been below capacity as we operate in a pandemic environment. As restrictions on gatherings and events continue to be in place, parking revenue budget for 2021 has been reduced to \$7 million.

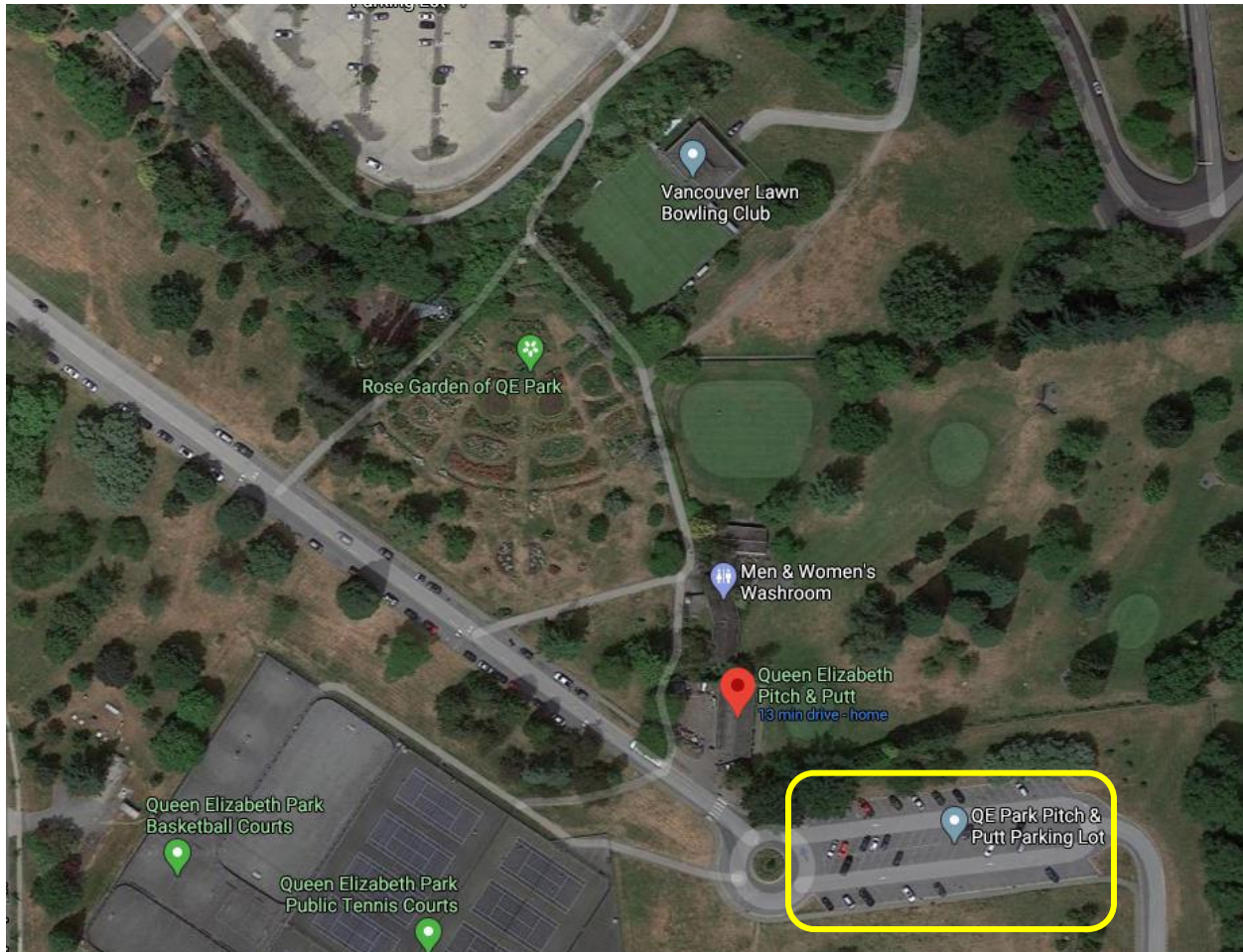
### **Pricing Considerations**

Efficient parking pricing provides numerous benefits including improved user convenience by ensuring parking spaces turnover, limited use of parking stalls for non-Park Board activities, and increased revenues. Parking rates are determined based on a scan of competitive lots and meter rates in the relevant areas, with consideration given to affordability of parks and recreation users. For 2021, there is an opportunity to increase some parking rates by higher percentages given the factors just mentioned, and that improvement in parking revenues further help support the Parks and Recreation system including Park Maintenance.

### ***Parking at Queen Elizabeth Park***

Currently Queen Elizabeth Park offers free and paid parking on site. Staff recommend implementing pay parking at the free lot. The site in question is located by the Pitch & Putt course and tennis courts. This parking lot is being occupied by park users, visitors to neighboring areas and construction crew on developments in the vicinity. By implementing paid parking, the lot would be consistent with other paid lots in the park and will help to deter traffic that is not using it for its intended purpose.

After initial set up cost of two meters (~\$15,000), the projected annual revenue from this lot is estimated to be \$100,000 to \$130,000.



### ***Veterans Parking***

City Council made a recent decision to offer veterans year-round free parking at City of Vancouver parking meters, which included a request for the Easy Park Board and Park Board to consider similar actions at their pay parking sites.

The Park Board has no specific policy established regarding offering free parking to veterans, however in order to highlight and recognize their service to Canada it has been the practice to exempt those displaying a veteran licence plate from paying for parking at Park Board managed lots during the week leading up to and including Remembrance Day.



The Easy Park Board has approved offering year-round free parking to veterans at the City of Vancouver parking lots they manage, and grant free year-round meter parking to vehicles displaying a BC veteran licence plate.

The Park Board's VanPlay Framework puts an emphasis on equity in service provision. In order to reflect that the Park Board's policy is one of equity and ability to pay, while also aligning with the recent Council decision to limit confusion between parking lots managed by the City and the Park Board, staff recommend that veterans paid parking be optional for the same term as the City's pilot project. Veterans can support the Parks and Recreation system by paying for parking however Veterans who choose not to pay and display a Veterans license plate will not be ticketed.

### ***Notable 2021 Rate Changes***

A review of the market indicated that we are lower than our competitors' lots. To better align these rates, but still maintain affordability for park and recreation users, rate increases are proposed as follows

**Table 2: Proposed Parking Rate Increases**

<b>Area</b>	<b>Proposed Rate Increase (Post-Tax)</b>
<b>Hourly</b>	\$0.00 - \$0.25 (0% to 17%)
<b>Daily</b>	\$0.00 - \$2.40 (0% to 12%)
<b>Monthly, Annual and Seasonal</b>	\$10 - \$44.23 (2% to 25%)

Parking rates are shown inclusive of relevant taxes. Details of proposed prices are included in Appendix A.

## **Marinas**

### ***Overview***

The Park Board operates two marinas: Burrard Civic Marina and Heather Civic Marina. Heather Civic Marina is operated by the Park Board on behalf of the Property Endowment Fund (PEF), with any net surplus from operations being transferred to the PEF; the Park Board does not retain any financial benefit from this operation. Marina operations in total generate roughly \$3.6 million from user fees.

### ***Notable 2021 Rate Changes***

In 2019, Park Board engaged a third party to conduct a rate appraisal which completed earlier in 2020. The appraisal resulted in most rates increasing by 2% effective April 1<sup>st</sup> with exception of land storage which were significantly lower than market. An increase of 7% was implemented on these rates to be comparable to market. For 2021, a rate increase of 2% is proposed for all fee categories.

Details of proposed prices are included in Appendix A.

## Special Events & Film

### Overview

The Park Board hosts special events and filming activities, with parks in constant demand for siting. While the use of park sites for large scale events and filming are welcomed, it is important to balance the use of park locations to minimize public access restrictions.

Previously, special events and filming generated roughly \$1 million in revenue through permit and use fees. These revenues help to offset costs associated with park maintenance. With COVID-19 restrictions on events for 50+ people and social gatherings, revenue expectation for 2021 budget has been adjusted down to \$0.6 million.

### Pricing Considerations

Pricing for special events and filming takes into consideration both the costs to operate and market conditions, with an overall goal of generating a net surplus to help fund other services and events which benefit all parks users.

### Notable 2021 Rate Changes

COVID-19 pandemic has changed the landscape in how and where businesses operate. The Provincial Health Officer's restriction on social gatherings and limit on group size saw the demand for small group event permits and outdoor spaces for activities that would typically be held indoors (ie: fitness/yoga classes). In response to the environment, new fee levels were created in 2020 to accommodate smaller groups. Most 2021 fees are proposed to increase by 2% with exceptions in the following areas.

**Table 3: Proposed Rate Increases for Events & General Permits**

Product	Proposed Rate Increase (Pre-Tax)
Private Events	\$15 - \$124 (5%)
Filming/Photography	\$1 - \$90 (2% - 6%)

A review of permit fees on private events and filming/photography indicate that our rates are below other municipalities. Filming in particular is significantly low compared to filming industry. The activities in these categories are commercial in nature, hence would be able to absorb additional fees. A rate increase of 5% (\$15 to \$124) for private events and 6% (\$1 to \$90) for filming/photography are proposed for 2021.

Details of proposed prices are included in Appendix A.

## Recreation Admissions, Programs and Facilities

### Overview

Recreation Services provides core programs and facilities to support residents and visitors staying active and healthy. In 2020, the Park Board was budgeted to generate over \$20 million from recreation user fees at arenas, aquatic facilities, Park Board run fitness centres, and outdoor sport facilities. However, as many facilities were closed beginning in March 2020 and are currently in

the midst of restarting services, the actual user fee revenue forecast to be earned in 2020 is just over \$10 million.

Recognizing that facility capacities due to COVID-19 restrictions will continue to limit the revenues that can be generated from recreation user fees, the proposed recreation user fee revenue budget for 2021 has been set at \$11 million, with the difference to be made up from increased tax support. In addition to the reduced revenue capacity, the required extra cleaning and line management in recreation facilities is expected to increase staff costs by ~8%. In an effort to reduce the impact of these budget changes on taxes, the recreation budget includes a \$220,000 target increase for revenues from increased user fees, based on applying an average of 2% fee increase to the 2021 budget of \$11 million.

### ***Pricing Considerations***

User fees help to offset the costs of direct staffing (such as instructors), indirect staff (such as programmers and cashiers), as well as facility operating and maintenance costs (such as facility cleaning, heating and cooling costs). Recreation user fees budgeted for in 2021 subsidize roughly 20% of recreation expenditures. Costs not funded through user fees are subsidized through other Park Board revenue sources and via property tax funding.

Due to the changes in facility operations, predicting the contribution of any single fee increase is difficult, but the rates proposed reflect the attempt by staff to address increased costs, facility capacity limits, customer impacts & equity issues.

### ***Notable 2021 Rate Changes***

#### **Recreation Admissions & Passes**

Adult Flexipass and drop-in admission passes are proposed to increase by approximately 2%. This increase will help to offset costs while remaining comparable to other municipalities.

Maple Grove Outdoor Pool drop-in admissions are proposed to increase for the first time since 2018 with adult rates rising from \$3 to \$4 (a 33% increase) & child/youth/senior rates rising from \$2 to \$3 (a 50% increase). It is proposed to increase these rates at \$1 per year until they are synchronized with the standard pool Drop-in admission rates, reflecting that the services received at this pool are similar to all other outdoor pools with the exception of length swimming.

Staff are continuing to align extended term/multiple visit products pricing to a standard discount model when compared to drop-in pricing and 1-month Flexipasses. This pricing structure promotes an extended commitment to recreational activity by users. The proposed 2021 discount methodology and the longer-term targets are outlined below.

**Table 4: Recreation Pass Discounts**

<b>Product</b>	<b>2020 Discount</b>	<b>2021 Discount</b>	<b>Target Discount</b>
10-visit admission pass & Indoor Cycling 10-visit admission passes <i>(discount compared to purchase of 10 drop-ins)</i>	18%	16%	10%
Public Skate Rental 10 tickets & Kerrisdale Play Palace 10-visit pass <i>(discount compared to purchase of 10 one-time fees)</i>	20%	16%	10%



A new Family Swim/Skate Reservation Fee is proposed for 2021 in response to public requests to provide a better option for family reservation booking during COVID-19 occupancy restrictions (software limitations have made it difficult to facilitate these bookings). The proposed \$12.68 pre-tax rate is equivalent to two adult admissions and will allow up to two adults from the same household & three children (aged 5-18) to book a swim or skate reservation for a single time slot. The existing Family Drop-in admission per person rate will still apply for Family Drop-ins not using the advanced reservation process.

Youth, Senior, and Child discounts are applied to noted adult admission rates based on the Park Board age-based fee structure policy: 50% discount for Child, 30% discount for Youth and Senior. Exceptions to this discount policy are noted in Appendix A.

### **Pool, Arena & Outdoor Sport Lessons and Programs**

Lessons and programs at pools and arenas will increase by approximately 2%.

It is proposed to continue the process that began in 2020 of aligning child and youth lesson pricing at pools and arenas. This will mean a 3% increase for child & youth pricing at pools as staff aim to align this product pricing with the Park Board's 30% discount policy. The proposed 2021 discount methodology and the longer-term targets are detailed below.

**Table 5: Child and Youth Swim Discounts**

<b>Product</b>	<b>2020 Discount</b>	<b>2021 Discount</b>	<b>Target Discount</b>
Child and Youth Swim Lessons – 30 mins <i>(discount compared to adult lesson pricing)</i>	30.6%	30.0%	30.0%
Child and Youth Swim – 45 mins <i>(discount compared to adult lesson pricing)</i>	34.3%	33.7%	30.0%

Adult learn to skate lessons will increase by \$0.29 (3.5%) per 30 minute class while child & preschool lessons will not increase to continue transitioning rate alignment with 30% age based discount for youth. The adult lesson increase is part of a multi-year plan to align skate lesson pricing with aquatics lessons.

Vancouver Aquatic Centre child minding strip tickets are proposed to increase by 7% (\$3.22), to align the discount structure with the other visit pass discounts discussed previously. This change will begin the transition from the current 20% discount price of \$45.92 over 10 individual drop-in fees to a 16% discount price of \$49.14 for 2021, with the eventual goal of providing a 10% discount.

It is proposed that there be no increase to fees for outdoor sport programming established in 2020 as the plan to launch these new programs during 2020 were put on hold due to COVID-19 restrictions.

### **Pool, Arena & Outdoor Sport Rentals**

Rental price structures at arenas and pools have been affected by COVID-19 staffing requirements and facility occupancy restrictions and the rates proposed for 2021 reflect the overall rate changes for various sports and facilities, with rate changes ranging between 0% and 5% increases.

For indoor pool rentals, no increase is proposed, as rental groups must now pay for the full staff costs related to COVID-19 safety plan pool usage restrictions because rental times can no longer share lifeguarding costs with public swim times. Foregoing an increase in the 2021 base rental rates helps ensure these group rentals can continue to provide sport opportunities for clubs, teams and other rental groups and once COVID-19 restrictions are removed rental rates can be adjusted to catch up to the increases foregone for 2021.

Outdoor pool rentals are also proposed to have no increase, in keeping with the lack of increase proposed for indoor pools and reflecting that no rental times were provided during 2020 due to COVID-19 facility usage restrictions.

Similarly, fitness studio & bleacher rentals were impacted by COVID-19 restrictions on participants and spectators, and it is proposed to not increase these fees for 2021 until the current pricing structures can be properly evaluated.

For arena rentals, generally all fees are proposed to increase by 2%, with the exception of Hockey School Fees, with a proposed increase of 5%. This is reflective of these being specialty rentals generally occurring during summer when operating costs are higher, and the additional wear and tear on the ice from this use sometimes necessitates extra time to repair the ice, reducing the ice availability for other rentals.

For field, turf and outdoor court rentals, rates are proposed to increase by 4% as user groups have expressed their willingness to pay for increased service through increase in user fees and a significant investment in expanded service was made in the 2020 budget.

Racquet court fees will increase by an average of 2%.

Details of all proposed recreation prices are included in Appendix A.

## **Regulation Golf Courses and Pitch & Putts**

### ***Overview***

The Park Board operates three regulation golf courses and three pitch & putt courses. Golf related user fees are budgeted to generate revenues of \$8.6 million in 2021, which is used to offset costs in other service areas.

In response to the COVID-19 pandemic, both regulation and pitch & putt courses were closed between March to May. These courses were reopened with capacity limits and COVID-19 safety protocols in place. Although operating in a strained environment, golf capacity limits were maximized during the summer months and performing on par.

### ***Pricing Considerations***

In determining golf rates, staff performed a market scan of other competing courses in the area and an increase of 2% is proposed on all golf fees.

Details of proposed prices are included in Appendix A.

## **Destination Attractions**

### ***Overview***

The Park Board operates three unique destination attractions: VanDusen Botanical Garden, Bloedel Conservatory, and Stanley Park Train. For 2021, these attractions are budgeted to generate total of \$1.8 million in revenue with \$1.2 million coming from the VanDusen Botanical Garden through a variety of activities, including garden admissions, special events, and rentals of room and garden spaces, \$0.4 million from the Bloedel Conservatory and \$0.2 million from the Stanley Park Train.

COVID-19 restrictions have significantly impacted these destination attractions. The Train and VanDusen gift shop have closed since March. VanDusen Garden and Bloedel Conservatory were closed a couple of months, but have reopened with capacity restrictions and safety protocols in place. Bright Nights at the Train and Festival of Lights at VanDusen have been approved for reopening during the holidays, but with capacity limits and safety protocols. Rental opportunities have been lost due to group size restrictions as ordered by the province. With restrictions still in place, total revenue budgeted for 2021 is \$1.8 million.

### ***Pricing Considerations***

Decisions on admission pricing are primarily based on the recoverability of costs to operate, and an assessment of the value of the visitor experience as the garden, conservatory, and train are unique attractions with limited comparable experiences.

For rentals at VanDusen, further consideration is given to events that restrict general garden access (e.g. events in the garden and lake/pond areas such as weddings or corporate events). Rental discounts for charities and non-profit groups are also provided.

### ***Notable 2021 Rate Changes***

#### **VanDusen Botanical Garden**

Propose increase of 2% on general admissions. Senior, youth and child rates will be adjusted in accordance to the Park Board's discount policy, with prices rounded to the nearest \$0.05.

An increase of 2% to 5% is proposed for rentals at VanDusen in order to align with comparable market rates.

Charity/non-profit discounts are transitioning to a target 30% discount by decreasing the discount annually by 0.5%. The 2021 discount rate is set at 33.5%.

#### **Bloedel Conservatory**

An increase of 2% is proposed on general admissions. Seniors, youth, and child admissions are priced in accordance with Park Board discount policy.

#### **Stanley Park Train**

An increase of 2% is proposed on general admissions, adjusted to nearest \$0.25 to reflect market practice. Seniors, youth, and child admissions are priced in accordance with Park Board discount policy.

Stanley Park Train has not been in operation since closure in March as result of COVID. It is re-opening for Bright Nights in December with reduced capacity and safety protocols.

Details of all proposed prices are included in Appendix A

### **Holiday Event Pricing**

As approved during the 2020 Fees & Charges review process, holiday event pricing is no longer part of this process. Prices are to be determined closer to the events, once the information required to set prices becomes available, subject to approval of the General Manager.

### **FINANCIAL IMPLICATIONS**

The revenue increases generated by the proposed fee changes have been incorporated into the 2021 proposed Operating Budget, contributing approximately \$745,000 - \$940,000 in revenues.

### **CONCLUSION**

It is Park Board policy that fees and charges for Park Board services are established on a cost recovery basis for core parks and recreational services, while remaining comparable to other municipalities and private providers. For services considered to be outside of the core service areas, fees and charges are set close to market to enable the Park Board to generate revenues to subsidize costs across other service areas.

The proposed changes for the 2021 Fees and Charges (detailed in Appendix A) are consistent with Park Board policy and consider market and customer impacts, keeping affordability at the forefront of proposed rates. The revenue increases generated by the fee increases proposed in this report have been incorporated into the 2021 Proposed Operating Budget and are expected to contribute between \$745,000 and \$940,000 toward increased costs of providing parks and recreation services for 2021.

General Manager's Office  
Vancouver Board of Parks and Recreation  
Vancouver, BC

Prepared by:  
Sarah Kapoor, Acting Director, Financial Planning & Analysis

/ski/me/clc

# **Vancouver Board of Parks and Recreation**

## **Proposed 2021 Fees & Charges**

### APPENDIX A



[www.vancouverparks.ca](http://www.vancouverparks.ca)

Special Park Board Meeting  
November 30, 2020



**POLICY**

The Park Board's policy on user fees and charges is summarized as follows:

User fees and charges will be levied to recover all or a portion of overall operating costs.

All fees and charges will be adjusted to accommodate changes in the marketplace and in operating and maintenance costs.

The General Manager will have the authority to waive or reduce fees and alter fees for services, promotion purposes and to quickly establish fees for experimental services.

Fees may be revised for people with accessibility issues and their attendants, families, groups, frequent users, low priority times, promotions and marketing strategies.

Each ice rink and indoor pool will include at least four hours of low-cost public sessions each week.

Leisure Access Program (LAP) participants receive free access to public swimming and skating, and reduced fees at participating Park Board operated fitness centres. Reductions are available for Flexipasses, swim lessons and skate lessons as well as for one recreation program per person per season at participating centres.

Unless otherwise specified, fees are defined for age-based and family categories as follows:

Pre-school:	4 years of age and under
Child:	5 to 12 years inclusive
Youth:	13 to 18 years inclusive
Adult:	19 to 64 years inclusive
Seniors:	65 years and up
Family:	1-2 adults of the same household and their children.

Where noted, to encourage family participation, family pricing is available; each person in the family pays the child rate, subject to a two person minimum.

An age-based fee structure will be maintained that provides the following general discounts from adult fees for recreation services:

Youth and Seniors:	30% discount
Children:	50% discount

## Parking

	FEE RATE PROPOSAL (INCLUDING PARKING TAXES)				Historical PoP % Trend				
	APPROVED	PROPOSED		% Change (incl. tax impact)					
Effective Date	Jan 1, 2020	Jan 1, 2021	\$ Change		Jan 1, 2016	Jan 1, 2017	Jan 1, 2018	Jan 1, 2019	Jan 1, 2020
*PARKING TAX RATE (see breakdown below)	30.20%	30.20%							
<b>Stanley Park (Lot 62)</b>									
Hourly Rate									
October 1st - March 31st	2.60	2.70	0.10	4%	-	11%	-	-	4%
April 1st - September 30th	3.60	3.70	0.10	3%	-	8%	-	-	3%
Daily Rate									
October 1st - March 31st	7.20	7.50	0.30	4%	-	17%	-	-	3%
April 1st - September 30th	13.40	14.00	0.60	5%	-	18%	-	-	3%
Season Pass - April 1st - September 30th	225.00	245.00	20.00	9%	-	6%	-	-	-
Off Season Pass - Oct 1 - Mar 31	120.00	130.00	10.00	8%	-	-	-	-	-
Annual Pass	345.00	355.00	10.00	3%	-	9%	-	-	-
<b>Devonian (Lot 35)</b>									
Hourly 6:00 am - 6:00 pm	5.30	5.30	0.00	0%	-	-	-	-	6%
Daily 6:00 am - 6:00 pm	15.50	15.65	0.15	1%	-	-	-	-	3%
Evening Rate 6:00 am - 6:00 pm	12.40	12.50	0.10	1%	-	-	-	-	3%
Event Rate 6:00 pm - 11:00 pm	25.00	25.50	0.50	2%	-	-	-	-	25%
Monthly	175.77	220.00	44.23	25%	-	-	-	-	41%
<b>Beach Avenue and Sunset Beach Loops (Lot 63)</b>									
Hourly Rate	3.60	3.70	0.10	3%	-	8%	-	-	3%
Daily Rate	13.40	14.00	0.60	5%	-	18%	-	-	3%
Event Rate 6:00 pm - 11:00 pm	25.00	26.00	1.00	4%	-	-	-	-	-
<b>Aquatic Centre (Lot 63)</b>									
Hourly Rate	3.60	3.70	0.10	3%	-	8%	-	-	3%
Daily Rate	13.40	14.00	0.60	5%	-	18%	-	-	3%
Event Rate 6:00 am - 6:00 pm	25.00	25.50	0.50	2%	-	-	-	-	-
<b>Coal Harbour Community Centre (Lot 64)</b>									
Hourly Rate 6:00 am - 6:00 pm	3.60	3.70	0.10	3%	18%	8%	-	-	3%
Daily Rate 6:00 am - 6:00 pm	16.50	16.50	0.00	0%	-	-	-	-	3%
Evening - 90 min Rate 6:00 pm - 1:00 am	3.60	3.70	0.10	3%	18%	8%	-	-	3%
Evening Rate 6:00 pm - 6:00 am	8.25	8.25	0.00	0%	-	14%	-	-	3%
Monthly Pass	204.96	225.00	20.04	10%	-	14%	-	-	2%
<b>Roundhouse Community Centre (Lot 65)</b>									
Hourly Rate 7:00 am - 6:00 pm	3.60	3.70	0.10	3%	18%	8%	-	-	3%
Daily Rate (Sat, Sun & holidays) 7:00 am - 6:00 pm	15.45	16.50	1.05	7%	-	15%	-	-	3%
Evening Rate 6:00 pm - 11:00 pm	5.15	7.00	1.85	36%	-	25%	-	-	3%
Monthly Pass	204.96	225.00	20.04	10%	-	17%	-	-	8%

## Parking

	FEE RATE PROPOSAL (INCLUDING PARKING TAXES)				Historical PoP % Trend				
	APPROVED	PROPOSED		% Change (incl. tax impact)					
Effective Date	Jan 1, 2020	Jan 1, 2021	\$ Change		Jan 1, 2016	Jan 1, 2017	Jan 1, 2018	Jan 1, 2019	Jan 1, 2020
*PARKING TAX RATE (see breakdown below)	30.20%	30.20%							
<b>Creekside Community Centre (Lot 68)</b>									
Hourly 6:30 am - 6:00 pm	3.60	3.70	0.10	3%	-	27%	-	-	3%
Daily 6:30 am - 6:00 pm	13.40	13.50	0.10	1%	-	18%	-	-	3%
Evening Rate 6:00 pm - 1:00 am	6.20	7.00	0.80	13%	-	20%	-	-	3%
<b>Queen Elizabeth Park (Lot 67) + NEW</b>									
Hourly Rate									
October 1st- April 30th	2.60	2.65	0.05	2%	-	11%	-	-	4%
May 1st - September 30th	3.60	3.65	0.05	1%	-	8%	-	-	3%
Daily Rate									
October 1st- April 30th	7.20	7.25	0.05	1%	-	17%	-	-	3%
May 1st - September 30th	13.40	13.50	0.10	1%	-	18%	-	-	3%
Annual Pass	140.00	160.00	20.00	14%	-	20%	-	-	-
<b>Kitsilano Park (Lot 66)</b>									
Hourly Rate									
October 1st - April 30th	2.60	2.65	0.05	2%	-	11%	-	-	4%
May 1st - September 30th	3.60	3.70	0.10	3%	-	8%	-	-	3%
Daily Rate									
October 1st - April 30th	7.20	7.25	0.05	1%	-	17%	-	-	3%
May 1st - September 30th	13.40	14.50	1.10	8%	-	18%	-	-	3%
<b>Burrard Marina</b>									
2 Hour Rate	3.60	3.70	0.10	3%	8%	8%	-	-	3%
<b>Vanier Park (Lot 71)</b>									
Daily Rate									
Vehicle and Trailer	20.60	23.00	2.40	12%	-	5%	-	-	3%
Vehicle Only	12.40	13.40	1.00	8%	120%	-	9%	-	3%
Hourly Rate									
Vehicle Only	3.60	3.65	0.05	1%	8%	8%	-	-	3%
Seasonal Pass - Vehicle & Trailer (Apr-Sept)	150.00	175.00	25.00	17%	-	-	-	-	-
<b>Vanier Park - Gravel (Lot 70)</b>									
Hourly	2.60	2.65	0.05	2%	-	-	-	-	4%
Daily	8.75	9.00	0.25	3%	-	-	6%	-	3%
<b>Jericho Beach (Lot 69)</b>									
Hourly Rate									
April 1 - September 30	3.60	3.70	0.10	3%	-	8%	-	-	3%
Daily Rate									
April 1 - September 30	13.40	13.75	0.35	3%	-	18%	-	-	3%
Season Pass (April 1 to September 30)	87.00	100.00	13.00	15%	-	5%	-	-	-21%

## Parking

Effective Date	FEE RATE PROPOSAL (INCLUDING PARKING TAXES)				Historical PoP % Trend				
	APPROVED	PROPOSED							
	Jan 1, 2020	Jan 1, 2021	\$ Change	% Change (incl. tax impact)	Jan 1, 2016	Jan 1, 2017	Jan 1, 2018	Jan 1, 2019	Jan 1, 2020
*PARKING TAX RATE (see breakdown below)	30.20%	30.20%							
<b>Empire Fields (Lot 87)</b>									
Hourly Rate (max 3 hrs)	1.55	1.75	0.20	13%	-	-	-	-	3%
<b>Hastings / Renfrew (Lot 109)</b>									
Hourly (max \$6 daily) 6:00 am - 6:00 pm	1.50	1.75	0.25	17%	-	-	-	-	-
Daily 6:00 am - 11:59 pm	12.00	12.50	0.50	4%	-	-	-	-	-
Evening Rate 6:00 pm - 12:00 am	6.00	6.12	0.12	2%	-	-	-	-	-
Daily (portion thereof for Events) 6:30 am - 6:00 pm	20.00	22.00	2.00	10%	-	-	-	-	-
<b>Bus Parking (Stanley Park and QE Park Only, one ticket/pass valid for both locations)</b>									
<b>Daily Rate</b>									
11 Seats & Under	16.50	16.83	0.33	2%	-	5%	2%	-	3%
12-24 Seats	27.85	30.00	2.15	8%	-	5%	3%	-	3%
25 Seats & Over	49.50	50.49	0.99	2%	-	5%	2%	-	3%
<b>Annual Pass</b>									
11 Seats & Under	675.00	688.50	13.50	2%	-	5%	2%	-	-21%
12-24 Seats	965.00	984.30	19.30	2%	-	5%	2%	-	-21%
25 Seats & Over	1,400.00	1,428.00	28.00	2%	-	5%	3%	-	-21%
"hop on hop off" buses	1,400.00	1,428.00	28.00	2%	-	5%	3%	-	-21%
<b>Special Event Parking Daily Rate</b>									
Rates may change during the year due to market fluctuations									
<b>Taxes Included in Parking Rates:</b>									
Parking Sales Tax	24.00%	24.00%							
GST on Parking Sales Tax	1.20%	1.20%							
GST	5.00%	5.00%							
	30.20%	30.20%							

## Burrard Marina

FEE RATE PROPOSAL (Excluding Taxes)						Historical PoP % Trend				
Effective Date		APPROVED Apr 1, 2020	PROPOSED Apr 1, 2021	\$ Change	% Change	Apr 1, 2016	Apr 1, 2017	Apr 1, 2018	Apr 1, 2019	Apr 1, 2020
Applicable Tax Rate (Reference Only)		5.0%	5.0%							
<b>Moorage Rates:</b>										
Slip Moorage (21' and under)	per ft/mth	12.05	12.29	0.24	2%	3%	2%	8%	1%	2%
Slip Moorage (22' and over)	per ft/mth	13.77	14.04	0.28	2%	2%	2%	8%	1%	2%
Transient Moorage - 30% premium above moorage rates										
Sublets on slip moorage - 30% premium on above rates										
<b>Land Storage - Motorized:</b>										
20' x 8' wide	per annum	1,336.26	1,362.99	26.73	2%	2%	2%	8%	1%	7%
30' x 10' wide	per annum	1,996.49	2,036.42	39.93	2%	2%	2%	8%	1%	7%
Sublets on land storage - 30% premium on above rates										
<b>Land Storage - Paddlers and Rowers:</b>										
60' x 20' wide (Rowing Pens)	per annum	3,735.98	3,810.69	74.72	2%	2%	2%	8%	1%	-
60' x 30' wide (Rowing Pens)	per annum	5,304.43	5,410.52	106.09	2%	2%	2%	8%	1%	-
Sublets on land storage - 30% premium on above rates										
Canoe and Kayak Racks	per annum	365.84	373.15	7.32	2%	2%	2%	2%	1%	-
Storage of 2 kayaks in one rack - 50% premium above single rate										
<b>Work Area:</b>										
1 to 30 days	per day	10.11	10.31	0.20	2%	3%	2%	2%	1%	2%
31 to 60 days	day and space permitting	13.00	13.26	0.26	2%	2%	2%	2%	1%	2%



## Special Events &amp; Filming - Event Permits

FEE RATE PROPOSAL (Excluding Taxes)						Historical PoP % Trend				
Effective Date		APPROVED Jan 1, 2020	PROPOSED Jan 1, 2021	\$ Change	% Change	Sep 1, 2016	Jan 1, 2017	Jan 1, 2018	Jan 1, 2019	Jan 1, 2020
Applicable Tax Rate (Reference Only)		105.0%	5.0%							
<b>Application Fee</b>		31.00	32.00	1.00	3%	-	2%	3%	-	3%
<b>Charity / Community</b>										
1-50, Level 1		99.00	101.00	2.00	2%	-	2%	2%	2%	2%
51-200, Level 2		251.00	256.00	5.00	2%	-	2%	3%	2%	2%
201-500, Level 3		371.00	378.00	7.00	2%	-	2%	2%	3%	2%
501-1000, Level 4		495.00	505.00	10.00	2%	-	2%	2%	3%	2%
>1000, Level 5		620.00	632.00	12.00	2%	-	2%	3%	3%	2%
<b>Charity Athletic / Corporate Runs</b>										
1-50, Level 1		99.00	101.00	2.00	2%	-	2%	4%	2%	2%
51-200, Level 2		251.00	256.00	5.00	2%	-	2%	3%	2%	2%
201-500, Level 3		371.00	378.00	7.00	2%	-	2%	2%	3%	2%
501-1000, Level 4		620.00	632.00	12.00	2%	-	2%	3%	3%	2%
1001-5000, Level 5		995.00	1,015.00	20.00	2%	-	2%	2%	3%	2%
>5000, Level 6		1,240.00	1,265.00	25.00	2%	-	2%	2%	3%	2%
<b>Private</b>										
1-50, Level 1		293.00	308.00	15.00	5%	-	2%	3%	2%	2%
51-200, Level 2		740.00	777.00	37.00	5%	-	2%	2%	2%	2%
201-500, Level 3		1,240.00	1,302.00	62.00	5%	-	2%	2%	3%	2%
501-1000, Level 4		1,980.00	2,079.00	99.00	5%	-	2%	2%	2%	2%
1001-5000, Level 5		2,475.00	2,599.00	124.00	5%	-	2%	2%	2%	2%
>5000, Level 6		Negotiable	Negotiable	n/a		-	-	-	-	-
<b>Community Festivals / Concerts</b>										
1-50, Level 1		246.00	251.00	5.00	2%	-	2%	3%	3%	2%
51-300, Level 2		371.00	378.00	7.00	2%	-	2%	2%	3%	2%
301-1000, Level 3		620.00	630.00	10.00	2%	-	2%	3%	3%	2%
1001-5000, Level 4		995.00	1,015.00	20.00	2%	-	2%	2%	3%	2%
5001-10,000, Level 5		1,240.00	1,265.00	25.00	2%	-	2%	2%	3%	2%
>10,000, Level 6		Negotiable	Negotiable	n/a		-	-	-	-	-
<b>Commercial Events</b>		Negotiable	Negotiable	n/a	-	-	-	-	-	-
<b>Weddings</b>										
1-5, Level 1 - NEW		100.00	102.00	2.00	2%	-	-	-	-	-
6-15, Level 2 - NEW		200.00	204.00	4.00	2%	-	-	-	-	-
16-30, Level 3 - NEW		350.00	357.00	7.00	2%	-	-	-	-	-
>31, Level 4		444.00	453.00	9.00	2%	-	2%	2%	2%	2%
<b>Alcohol Permits</b>		620.00	630.00	10.00	2%	-	2%	3%	3%	2%
<b>Site Visit</b>		110.00	112.00	2.00	2%	-	-	5%	3%	2%
<b>Site Monitoring (per hr)</b>		78.00	80.00	2.00	3%	-	2%	6%	3%	3%
<b>Setup/Takedown (per day)</b>		n/a	n/a	n/a	-	-	2%	2%	3%	-
Charged at 50% of the applicable daily special even or filming fee.										
<b>Unmanned Aerial Vehicle (UAV) Fee</b>		189.00	193.00	4.00	2%	-	-	2%	3%	2%
<b>Block Party Fee</b>		107.00	109.00	2.00	2%	-	-	2%	3%	2%
<b>Security Deposit</b>		2,040.00	Negotiable	n/a	-	-	-	-	-	2%

## Special Events &amp; Filming - General Permits

Effective Date		FEE RATE PROPOSAL (Excluding Taxes)				Historical PoP % Trend				
		APPROVED Jan 1, 2020	PROPOSED Jan 1, 2021	\$ Change	% Change	Sep 1, 2016	Jan 1, 2017	Jan 1, 2018	Jan 1, 2019	Jan 1, 2020
Applicable Tax Rate (Reference Only)		5.0%	5.0%							
<b>Application Fee</b>		31.00	32.00	1.00	3%	-	2%	3%	-	3%
<b>Vendors Market</b>		1,240.00	1,264.80	24.80	2%	-	2%	2%	3%	2%
<b>Filming/Photography</b>										
Documentary, Student		44.00	45.00	1.00	2%	-	2%	3%	2%	2%
Film Lunch Tents		313.00	332.00	19.00	6%	-	2%	3%	2%	2%
Set up / wrap		371.00	393.00	22.00	6%	-	2%	2%	3%	2%
Neighbourhood Parks	Level 1	184.00	195.00	11.00	6%	-	2%	2%	3%	2%
	Level 2	377.00	400.00	23.00	6%	-	2%	3%	3%	2%
	Level 3	755.00	800.00	45.00	6%	-	2%	3%	3%	2%
	Level 4	1,130.00	1,198.00	68.00	6%	-	-	-	3%	2%
Destination Parks	Level 1	246.00	261.00	15.00	6%	-	2%	3%	3%	2%
	Level 2	495.00	525.00	30.00	6%	-	2%	2%	3%	2%
	Level 3	995.00	1,055.00	60.00	6%	-	2%	2%	3%	2%
	Level 4	1,495.00	1,585.00	90.00	6%	-	-	-	3%	2%
Photography	Level 1	189.00	193.00	4.00	2%	-	2%	3%	3%	2%
	Level 2	371.00	378.00	7.00	2%	-	2%	2%	3%	2%
	Level 3 - NEW	-	495.00			-	-	-	-	-
<b>Picnics</b>										
Not Sheltered	Level 1	70.00	71.50	1.50	2%	-	2%	2%	3%	1%
	Fraser River & Memorial South									
Not Sheltered	Level 2	100.00	102.00	2.00	2%	-	2%	2%	2%	2%
	Lacarno, Jericho, Maple Grove, New Brighton, Riverfront									
Sheltered	Level 1	116.00	118.00	2.00	2%	-	2%	3%	3%	2%
	Ceperley/Second Beach, John Henry/Trout Lake, Mini Railway									
Sheltered	Level 2	185.00	189.00	4.00	2%	-	2%	2%	2%	2%
Propect Point										

## Special Events &amp; Filming - General Permits

Effective Date		FEE RATE PROPOSAL (Excluding Taxes)				Historical PoP % Trend				
		APPROVED Jan 1, 2020	PROPOSED Jan 1, 2021	\$ Change	% Change	Sep 1, 2016	Jan 1, 2017	Jan 1, 2018	Jan 1, 2019	Jan 1, 2020
Applicable Tax Rate (Reference Only)		5.0%	5.0%							
<b>Artist Permits</b>										
	<b>Season</b>									
Artist Zone A (per month)	High	78.50	80.00	1.50	2%	-	2%	3%	1%	2%
Artist Zone A (per month)	Low	39.75	40.50	0.75	2%	-	2%	3%	3%	2%
Artist Zone B (per month)	High	63.25	64.50	1.25	2%	-	2%	3%	2%	2%
Artist Zone B (per month)	Low	32.75	33.50	0.75	2%	-	2%	5%	3%	2%
Artist Zone C (per month)	High	51.00	52.00	1.00	2%	-	2%	4%	2%	2%
Artist Zone C (per month)	Low	28.50	29.00	0.50	2%	-	2%	3%	4%	2%
Artist Zone D (per month)	High	63.25	64.50	1.25	2%	-	2%	3%	2%	2%
Artist Zone D (per month)	Low	32.75	33.50	0.75	2%	-	2%	5%	3%	2%
Artist Zone E (per month)	High	63.25	64.50	1.25	2%	-	2%	3%	2%	2%
Artist Zone E (per month)	Low	32.75	33.50	0.75	2%	-	2%	5%	3%	2%
Artist Parking (per month)	High	23.50	24.00	0.50	2%	-	2%	6%	-	2%
Artist Parking (per month)	Low	21.50	22.00	0.50	2%	-	2%	7%	-	2%
<b>Recreation Activity Permit</b>										
Private/commercial (per hr)	Level 1	50.00	50.00	0.00	0%	-	2%	9%	-	150%
Private/commercial (per hr)	Level 2 - NEW	75.00	75.00	0.00	0%	-	-	-	-	-
Non-profit (per hr)		15.25	15.50	0.25	2%	-	-	-	-	-

## Recreation Admissions &amp; Passes

Effective Date	FEE RATE PROPOSAL (Excluding Taxes)				Historical PoP % Trend			
	APPROVED Jan 1, 2020	PROPOSED Jan 1, 2021	\$ Change	% Change	Jan 1, 2017	Jan 1, 2018	Jan 1, 2019	Jan 1, 2020
Applicable Tax Rate (Reference Only)	5.0%	5.0%						
<b>Adult*</b>								
12 month Flexipass	415.15	423.45	8.30	2%	2%	2%	2%	2%
3 month Flexipass	129.74	132.33	2.59	2%	2%	2%	2%	2%
1 month Flexipass	48.05	49.01	0.96	2%	2%	-	2%	2%
10 Visit Admission Pass	51.32	53.26	1.94	4%	2%	2%	2%	3%
Drop-in Admission	6.22	6.34	0.12	2%	2%	2%	-	2%
<b>Excluded from age-based discount policy:</b>								
Maple Grove Outdoor Pool Drop-in Admission - Adult	2.86	3.81	0.95	33%	-	20%	-	-
Maple Grove Outdoor Pool Drop-in Admission - Child/Youth/Senior	1.90	2.86	0.96	51%	-	33%	-	-
Indoor Cycling Drop-in (all ages)	6.22	6.34	0.12	2%	2%	2%	-	2%
Indoor Cycling 10 Visit Admission Pass (all ages)	51.32	53.26	1.94	4%	2%	2%	-	5%
<b>Kerrisdale Play Palace Drop-in Admission</b>								
6 years to 12 years	5.26	5.37	0.11	2%	2%	2%	2%	2%
2 years to 5 years	4.74	4.83	0.09	2%	2%	2%	2%	2%
6 months to 23 months	3.66	3.73	0.07	2%	2%	2%	2%	2%
Under 6 months	FREE	FREE			-	-	-	-
Group Rate (Monday - Friday, 12pm - 2pm only)	3.39	3.46	0.07	2%	2%	3%	2%	2%
<b>Kerrisdale Play Palace 10 Visit Pass</b>								
16% discount compared to 10 x Drop-in price								
<b>Skate Rentals and Skate Sharpening</b>								
Public Skate Rental	3.14	3.20	0.06	2%	2%	2%	2%	2%
Public Skate Rental 10 Tickets	25.12	26.88	1.76	7%	2%	2%	2%	2%
School Skate Rental	50% off	50% off						
Skate Sharpening (incl. PST as well)	6.05	6.17	0.12	2%	2%	2%	2%	2%
<b>Flexipass Discounts:</b>								
Youth and Senior	30% off	30% off			-	-	-	-
Child	50% off	50% off			-	-	-	-
Leisure Access Program (LAP)	50% off	50% off			-	-	-	-
Corporate Discount (minimum of 10 members)	25% off	25% off			-	-	-	-
Target Fitness for CoV employees	44% off	44% off			-	-	-	-
<b>*Age-based Admission Discounts</b>								
Youth and Senior	30% off	30% off			-	-	-	-
Child	50% off	50% off			-	-	-	-
Preschoolers, accompanied by an adult, except where rates are noted.	FREE	FREE			-	-	-	-
<b>Other Admission Discounts (not applicable to 10 Visit Admission Passes):</b>								
Family Drop-in Admission per person (minimum two child rates)	at child rate	at child rate			-	-	-	-
Family Swim/Skate Reservation Fee <b>(NEW)</b>	-	12.68	12.68		-	-	-	-

## Recreation Admissions &amp; Passes

Effective Date	FEE RATE PROPOSAL (Excluding Taxes)				Historical PoP % Trend			
	APPROVED Jan 1, 2020	PROPOSED Jan 1, 2021	\$ Change	% Change	Jan 1, 2017	Jan 1, 2018	Jan 1, 2019	Jan 1, 2020
Applicable Tax Rate (Reference Only)	5.0%	5.0%						
LAP Admission Rate - free public swim, public skate & skate rental	FREE	FREE			-	-	-	-
LAP Admission Discount - Fitness (does not apply to Personal Training)	50% off	50% off			-	-	-	-
Low cost swim/skate sessions Drop-in admission	50% off	50% off			-	-	-	-
Sauna/Whirlpool only Drop-in admission (pool closure)	50% off	50% off			-	-	-	-
Group Rate - single Drop-in admission for groups of 10 or more	25% off	25% off			-	-	-	-
<b>Fitness Personal Training</b>								
Private 1 session	51.73	52.76	1.03	2%	2%	2%	-	2%
Private 3 sessions	143.34	146.21	2.87	2%	2%	5%	-	2%
Private 5 sessions	230.55	235.16	4.61	2%	2%	1%	-	2%
Private 10 sessions	413.88	422.16	8.28	2%	2%	2%	-	2%
Semi 1 session	77.57	79.12	1.55	2%	2%	2%	-	2%
Semi 3 sessions	215.05	219.35	4.30	2%	2%	5%	-	2%
Semi 5 sessions	355.04	362.14	7.10	2%	2%	-	-	2%
Semi 10 sessions	659.36	672.55	13.19	2%	2%	-	-	2%
Group 1 session	108.80	110.98	2.18	2%	2%	-	-	-
Group 3 sessions	291.42	297.25	5.83	2%	2%	-	-	-
Group 5 sessions	427.43	435.98	8.55	2%	2%	-	-	-
Group 10 sessions	777.14	792.68	15.54	2%	2%	-	-	-



## Pool, Arena &amp; Outdoor Sport Recreation Programs

Effective Date	FEE RATE PROPOSAL (Excluding Taxes)				Historical PoP % Trend			
	APPROVED Jan 1, 2020	PROPOSED Jan 1, 2021	\$ Change	% Change	Jan 1, 2017	Jan 1, 2018	Jan 1, 2019	Jan 1, 2020
Applicable Tax Rate (Reference Only)	5.0%	5.0%						
* No GST charged on children's programs/lessons								
<b><u>INDOOR POOLS - SWIM PROGRAMS - LESSONS*</u></b>								
<b>Adult</b>								
30 min. Class	8.83	9.01	0.18	2%	0	0	0	0
40-45 min. Class	10.60	10.81	0.21	2%	0	0	0	0
<b>Red Cross (Children &amp; Youth)</b>								
30 min. Class	6.13	6.31	0.18	3%	0	0	0	0
40-45 min. Class	6.96	7.17	0.21	3%	0	0	0	0
<b>Preschool</b>								
30 min. Class	6.90	7.04	0.14	2%	0	0	0	0
<b>Red Cross - Leadership Courses</b> (per class hour)	6.57	6.70	0.13	2%	0	0	0	0
<b>Lifesaving - Leadership Courses</b> (per class hour)	6.57	6.70	0.13	2%	0	0	0	0
<b>Advanced Aquatics Re-Certification</b> (per class hour)	9.58	9.77	0.19	2%	-	-	-	-
Extra candidate fees will be applied								
<b>Private Lessons</b> (30 min class)								
All Ages	31.11	31.73	0.62	2%	-	-	0	0
<b>Semi-Private Lessons</b> (2-3 participants, 30 min class)								
All Ages	20.91	21.33	0.42	2%	-	-	0	0
<b>Adapted Aquatics Lessons</b>								
All Ages, per lesson (no Lesson Material Charge applies)	6.76	6.90	0.14	2%	-	-	-	0
<b>Child Minding (no GST)</b>								
VAC Childminding Drop-in admission	5.74	5.85	0.11	2%	0	0	0	0
VAC Childminding strip tickets	45.92	49.14	3.22	7%	0	0	0	0
<b><u>INDOOR POOLS - SWIM PROGRAMS - DAY CAMP*</u></b>								
<b>Swim &amp; Skate Day Camp</b>								
Per hour fee	5.55	5.66	0.11	2%	-	-	-	0
<b><u>ARENA PROGRAMS - SKATE PROGRAMS *</u></b>								
<b>Learn to Skate Lessons</b>								
Adult - 30 minute class	8.37	8.66	0.29	3%	0	0	0	0
Child - 30 minute class	7.16	7.16	0.00	0%	0	0	-	-
Preschool - 30 minute class	7.67	7.67	0.00	0%	0	0	-	-
Private Lessons (All Ages)	31.11	31.73	0.62	2%	-	-	0	0
<b>Power Skating (All Ages)</b>								
Per hour fee	11.29	11.52	0.23	2%	0	0	0	0
<b>Swim &amp; Skate Day Camp</b>								
Per hour fee	5.55	5.66	0.11	2%	-	-	-	0
<b><u>OUTDOOR SPORT PROGRAMMING</u></b>								
Per session fee	8.00	8.00	0.00	0%	-	-	-	-
Sport League - per game, per team	100.00	100.00	0.00	0%	-	-	-	-

## Pool, Arena, Outdoor Sport, Fitness &amp; Raquet Court Recreation Rentals

Effective Date	FEE RATE PROPOSAL (Excluding Taxes)				Historical PoP % Trend			
	APPROVED Apr 1, 2020	PROPOSED Apr 1, 2021	\$ Change	% Change	Jan 1, 2017	Jan 1, 2018	Apr 1, 2019	Apr 1, 2020
Applicable Tax Rate (Reference Only)	5.0%	5.0%						
<b><u>INDOOR POOLS - GENERAL RENTAL (Hourly Rates)</u></b>								
<b>50M Pools</b>								
Lane	47.72	47.72	0.00	0%	4%	5%	2%	2%
Section Rates	125.84	125.84	0.00	0%	4%	5%	2%	2%
50m Tank	376.32	376.32	0.00	0%	4%	5%	2%	2%
Diving Tanks	125.84	125.84	0.00	0%	4%	5%	2%	2%
Teach Tank (staff extra)	27.69	27.69	0.00	0%	4%	5%	2%	2%
Lecture/Party Room	28.46	28.46	0.00	0%	4%	5%	2%	2%
<b>Kensington</b>								
Full Tank	107.07	107.07	0.00	0%	4%	5%	2%	2%
Shared Use (1/2 Tank)	59.35	59.35	0.00	0%	4%	5%	2%	2%
<b>Templeton</b>								
Teach Tank (staff extra)	27.69	27.69	0.00	0%	4%	5%	2%	2%
<b>School Rentals - Special</b>								
Templeton and Lord Byng (staff extra)	74.06	74.06	0.00	0%	4%	5%	2%	2%
<b>All Other Pools</b>								
25m Tank (staff extra)	142.93	142.93	0.00	0%	4%	5%	2%	2%
Lane	24.12	24.12	0.00	0%	4%	5%	2%	2%
<b><u>INDOOR POOLS - BLOCK RENTALS</u></b>								
<b>50M Pools</b>								
1/2 day	1,789.39	1,789.39	0.00	0%	4%	5%	2%	2%
Full day	3,578.78	3,578.78	0.00	0%	4%	5%	2%	2%
<b>All Other Pools</b>								
1/2 day	766.88	766.88	0.00	0%	4%	5%	2%	2%
Full day	1,533.76	1,533.76	0.00	0%	4%	5%	2%	2%
<b><u>INDOOR POOLS - CLUB RENTALS (Hourly Rates)</u></b>								
<i>(Club rentals apply to Vancouver-based Clubs registered with Swim BC)</i>								
<b>Prime Time 50M/8 Lanes/Hour</b>								
Pool	155.24	155.24	0.00	0%	4%	5%	2%	2%
Lane	19.77	19.77	0.00	0%	4%	5%	2%	2%
<b>Non-Prime Time 50M/8 Lanes/Hour</b>								
Pool	37.72	37.72	0.00	0%	4%	5%	2%	2%
Lane	4.95	4.95	0.00	0%	4%	5%	2%	2%
<b>Prime Time 25M/8 Lanes/Hour VAC</b>								
Pool (21M/25M section)	79.37	79.37	0.00	0%	4%	5%	2%	2%
Lane	10.17	10.17	0.00	0%	4%	5%	2%	2%
<b>Non-Prime Time 25M/8 Lanes/Hour VAC</b>								
Pool	23.75	23.75	0.00	0%	4%	5%	2%	2%
<b>Prime Time 25M/6 Lanes/Hour</b>								
Pool	49.71	49.71	0.00	0%	4%	5%	2%	2%
Lane	8.35	8.35	0.00	0%	4%	5%	2%	2%

## Pool, Arena, Outdoor Sport, Fitness &amp; Raquet Court Recreation Rentals

Effective Date	FEE RATE PROPOSAL (Excluding Taxes)				Historical PoP % Trend			
	APPROVED Apr 1, 2020	PROPOSED Apr 1, 2021	\$ Change	% Change	Jan 1, 2017	Jan 1, 2018	Apr 1, 2019	Apr 1, 2020
Applicable Tax Rate (Reference Only)	5.0%	5.0%						
<b>Non-Prime Time 25M/6 Lanes/Hour</b>								
Pool	24.65	24.65	0.00	0%	4%	5%	2%	2%
Lane (shared use)	6.99	6.99	0.00	0%	4%	5%	2%	2%
<b>Diving Tank</b>								
Dive Tank Prime Time/Hour	39.19	39.19	0.00	0%	4%	5%	2%	2%
Dive Tank Non-Prime Time/Hour	19.48	19.48	0.00	0%	4%	5%	2%	2%
<b>Pool Discounts:</b>								
Block Rentals-discount over hourly rates: 4hrs 20%; 8hrs 25%; 12hrs 30%								
<b><u>OUTDOOR POOLS - GENERAL RENTAL (Hourly Rates)</u></b>								
<b>Kitsilano Pool</b>								
Pool	983.79	983.79	0.00	0%	2%	5%	2%	2%
Lane 137.5 m	131.43	131.43	0.00	0%	2%	5%	2%	2%
<b>Second Beach</b>								
Pool	617.04	617.04	0.00	0%	2%	5%	2%	2%
Lane 50m	46.11	46.11	0.00	0%	2%	5%	2%	2%
<b>New Brighton</b>								
Pool	369.10	369.10	0.00	0%	2%	5%	2%	2%
Lane 25 m	23.67	23.67	0.00	0%	2%	5%	2%	2%
<b>Maple Grove</b>								
Pool	369.10	369.10	0.00	0%	2%	5%	2%	2%
<b><u>OUTDOOR POOLS - SWIM CLUBS (Hourly Rates)</u></b>								
<i>(Club rentals apply to Vancouver-based clubs registered with Swim BC)</i>								
<b>Kitsilano Pool</b>								
Pool	144.11	144.11	0.00	0%	2%	5%	2%	2%
<b>Second Beach</b>								
Lane	18.47	18.47	0.00	0%	2%	5%	2%	2%
<b>New Brighton</b>								
Lane	9.49	9.49	0.00	0%	2%	5%	2%	2%
<b>Pool Discounts:</b>								
Block Rentals-discount over hourly rates: 4hrs 20%; 8hrs 25%; 12hrs 30%								

## Pool, Arena, Outdoor Sport, Fitness &amp; Raquet Court Recreation Rentals

Effective Date	FEE RATE PROPOSAL (Excluding Taxes)				Historical PoP % Trend			
	APPROVED Apr 1, 2020	PROPOSED Apr 1, 2021	\$ Change	% Change	Jan 1, 2017	Jan 1, 2018	Apr 1, 2019	Apr 1, 2020
Applicable Tax Rate (Reference Only)	5.0%	5.0%						
<b><u>ICE RENTALS (ALL ARENAS EXCEPT WEST END)</u></b>								
<b>Adult Rentals</b>								
Monday - Friday 5:00 am - 8:00 am	119.92	122.32	2.40	2%	2%	53%	2%	2%
Monday - Friday 8:00 am - 5:00 pm	119.92	122.32	2.40	2%	2%	5%	2%	2%
Monday - Friday 5:00 pm - 11:00 pm	306.58	312.71	6.13	2%	2%	2%	2%	2%
Monday - Friday 11:00 pm - 5:00 am	163.01	166.27	3.26	2%	2%	5%	2%	2%
Saturday - Sunday 7:00 am - 6:00 pm	306.58	312.71	6.13	2%	2%	2%	2%	2%
Saturday - Sunday 6:00 pm - 11:00 pm	253.31	258.38	5.07	2%	2%	5%	2%	2%
Saturday - Sunday 11:00 pm - 7:00 am	163.01	166.27	3.26	2%	2%	5%	2%	2%
<b>Minor Sports - Entitlement Ice</b>								
Monday - Friday 5:30 pm - Midnight	102.36	104.41	2.05	2%	2%	5%	2%	2%
Saturday - Sunday 7:30 am - Midnight	102.36	104.41	2.05	2%	2%	5%	2%	2%
All other times	51.18	52.21	1.03	2%	2%	5%	3%	2%
<b>Minor Sports - Above Entitlement Ice</b>								
Monday - Friday 3:00 pm - 5:30 pm	79.38	80.97	1.59	2%	2%	2%	2%	2%
Monday - Friday 5:30 pm - Midnight	159.89	163.09	3.20	2%	2%	2%	2%	2%
Saturday - Sunday 7:30 am - Midnight	159.89	163.09	3.20	2%	2%	2%	2%	2%
All other times	51.18	52.21	1.03	2%	2%	5%	3%	2%
<b>Non Profit Rate</b>								
Monday - Friday 3:00 pm - 5:30 pm	79.38	80.97	1.59	2%	2%	2%	2%	2%
Monday - Friday 5:30 pm - Midnight	159.89	163.09	3.20	2%	2%	2%	2%	2%
Saturday - Sunday 7:30 am - Midnight	159.89	163.09	3.20	2%	2%	2%	2%	2%
All other times	51.18	52.21	1.03	2%	2%	-35%	3%	2%
<b>School Rentals (Preschools, K - 12)</b>								
School Days (daytime only)	73.45	74.92	1.47	2%	2%	2%	2%	2%
<b>Hockey Schools</b>								
Monday - Friday 5:30 pm - 11:00 pm	246.13	258.44	12.31	5%	2%	2%	2%	2%
Saturday - Sunday 7:30 am - 11:00 pm	246.13	258.44	12.31	5%	2%	2%	2%	2%
All other times	159.89	167.88	7.99	5%	2%	2%	2%	2%

## Pool, Arena, Outdoor Sport, Fitness &amp; Raquet Court Recreation Rentals

Effective Date	FEE RATE PROPOSAL (Excluding Taxes)				Historical PoP % Trend			
	APPROVED Apr 1, 2020	PROPOSED Apr 1, 2021	\$ Change	% Change	Jan 1, 2017	Jan 1, 2018	Apr 1, 2019	Apr 1, 2020
Applicable Tax Rate (Reference Only)	5.0%	5.0%						
<b><u>WEST END ICE ARENA</u></b>								
<b>Adult Rentals</b>								
Monday - Friday 5:00 am - 8:00 am	95.04	96.94	1.90	2%	2%	58%	2%	2%
Monday - Friday 8:00 am - 5:00 pm	95.04	96.94	1.90	2%	2%	5%	2%	2%
Monday - Friday 5:00 pm - 11:00 pm	191.19	195.01	3.82	2%	2%	2%	2%	2%
Monday - Friday 11:00 pm - 5:00 am	124.32	126.81	2.49	2%	2%	5%	2%	2%
Saturday - Sunday 7:00 am - 11:00 pm	191.19	195.01	3.82	2%	1%	2%	2%	2%
Saturday - Sunday 11:00 pm - 7:00 am	124.32	126.81	2.49	2%	1%	5%	2%	2%
<b>Minor Sports - Entitlement Ice</b>								
Monday - Friday 5:30 pm - 11:00 pm	67.85	69.21	1.36	2%	2%	5%	2%	2%
Saturday 7:30 am - 11:00 pm	67.85	69.21	1.36	2%	2%	5%	2%	2%
Sunday 7:30 am - 11:00 pm	67.85	69.21	1.36	2%	2%	5%	2%	2%
All other times	33.93	34.61	0.68	2%	2%	5%	3%	2%
<b>Minor Sports - Above Entitlement Ice</b>								
Monday - Friday 5:30 pm - 11:00 pm	95.61	97.52	1.91	2%	2%	2%	2%	2%
Saturday 7:30 am - 11:00 pm	95.61	97.52	1.91	2%	2%	2%	2%	2%
Sunday 7:30 am - 11:00 pm	95.61	97.52	1.91	2%	2%	2%	2%	2%
All other times	33.93	34.61	0.68	2%	2%	5%	3%	2%
<b>Non Profit Rate</b>								
Monday - Friday 5:00 am - 8:00 am	49.18	50.16	0.98	2%	2%	2%	2%	2%
Monday - Friday 5:30 pm - 11:00 pm	95.61	97.52	1.91	2%	2%	2%	2%	2%
Saturday 7:30 am - 11:00 pm	95.61	97.52	1.91	2%	2%	2%	2%	2%
Sunday 7:30 am - 11:00 pm	95.61	97.52	1.91	2%	2%	2%	2%	2%
All other times	33.93	34.61	0.68	2%	2%	5%	3%	2%
<b>Hockey Schools</b>								
Monday - Friday 5:30 pm - 11:00 pm	147.68	155.06	7.38	5%	-	-	2%	2%
Saturday - Sunday 7:30 am - 11:00 pm	147.68	155.06	7.38	5%	-	-	2%	2%
All other times	111.91	117.51	5.60	5%	-	-	2%	2%
<b>Schools</b>	63.81	65.09	1.28	2%	2%	2%	2%	2%
<b>(Preschools, K - 12) Weekdays - daytime</b>								
<b><u>ARENAS - DRY FLOOR</u></b>								
Adult Sport Groups - Hour	95.10	97.00	1.90	2%	2%	2%	2%	2%
Minor Sports Groups - Hour	32.95	33.61	0.66	2%	2%	5%	2%	2%
Lacrosse - Junior "B" - Hour	44.57	45.46	0.89	2%	2%	5%	2%	2%
Lacrosse - Senior "B" - Hour	95.10	97.00	1.90	2%	2%	2%	2%	2%
<b>Non Profit Societies</b>								
Daily Rate plus staff set - up costs	604.36	616.45	12.09	2%	2%	2%	2%	2%
<b>Commercial Groups</b>								
Hourly Rate (plus staff set - up costs)	265.40	270.71	5.31	2%	2%	5%	2%	2%
Daily Rate (plus staff set - up costs)	1,277.96	1,303.52	25.56	2%	2%	5%	2%	2%



## Pool, Arena, Outdoor Sport, Fitness &amp; Raquet Court Recreation Rentals

Effective Date	FEE RATE PROPOSAL (Excluding Taxes)				Historical PoP % Trend			
	APPROVED Apr 1, 2020	PROPOSED Apr 1, 2021	\$ Change	% Change	Jan 1, 2017	Jan 1, 2018	Apr 1, 2019	Apr 1, 2020
Applicable Tax Rate (Reference Only)	5.0%	5.0%						
<b>Kerrisdale Play Palace Birthday Parties</b>								
Fee is for a 2 hour party and includes 20 admissions								
<b>Upper Concourse North</b>								
Monday - Thursday 2:00pm - 4:00pm	87.27	89.02	1.75	2%	2%	2%	2%	2%
Friday 2:00pm - 3:30pm	63.91	65.19	1.28	2%	2%	2%	2%	2%
<b>Weekend Rates</b>								
Upper Concourse North/Centre/South	102.84	104.90	2.06	2%	2%	2%	2%	2%
Skate Shop	97.42	99.37	1.95	2%	2%	2%	2%	2%
Private Room	119.06	121.45	2.38	2%	2%	2%	2%	2%
<b>Entire Facility</b>								
Monday - Thursday 5:00pm - 7:00pm	323.70	330.17	6.47	2%	2%	2%	2%	2%
Friday - Saturday 4:30pm - 6:30pm	358.23	365.40	7.16	2%	2%	2%	2%	2%
Friday - Saturday 7:00pm - 9:00pm	323.70	330.17	6.47	2%	2%	2%	2%	2%
Sunday 4:30pm - 6:30pm	358.23	365.40	7.16	2%	2%	2%	2%	2%
<b><u>OUTDOOR SPORTS FACILITIES (fees are per hour unless otherwise noted)</u></b>								
<b>Sport Field - Artificial Turf ("AA")</b>								
Youth Non-Profit	27.16	28.25	1.09	4%	2%	2%	2%	4%
Adult Non-Profit	53.03	55.15	2.12	4%	2%	2%	2%	4%
Other	58.05	60.37	2.32	4%	2%	5%	2%	4%
<b>Sport Field - Premium Grade Natural Turf ("A")</b>								
Youth Non-Profit	2.10	2.18	0.08	4%	2%	2%	2%	4%
Adult Non-Profit	16.30	16.95	0.65	4%	2%	2%	2%	4%
Other	19.20	19.97	0.77	4%	2%	5%	2%	4%
<b>Sport Field - Natural Turf ("B")</b>								
Youth Non-Profit	2.10	2.18	0.08	4%	2%	2%	2%	4%
Adult Non-Profit	11.41	11.87	0.46	4%	2%	2%	2%	4%
Other	15.48	16.09	0.62	4%	2%	5%	2%	4%
<b>Sport Field - Natural Turf, ("Non Regulation")</b>								
Youth Non-Profit	2.10	2.18	0.08	4%	2%	2%	2%	4%
Adult Non-Profit	5.94	6.18	0.24	4%	2%	2%	2%	4%
Other	9.34	9.71	0.37	4%	2%	5%	2%	4%
<b>Diamond</b>								
Youth Non-Profit	2.10	2.18	0.08	4%	2%	2%	2%	4%
Adult Non-Profit	11.41	11.87	0.46	4%	2%	2%	2%	4%
Other	15.48	16.09	0.62	4%	2%	5%	2%	4%

## Pool, Arena, Outdoor Sport, Fitness &amp; Raquet Court Recreation Rentals

Effective Date	FEE RATE PROPOSAL (Excluding Taxes)				Historical PoP % Trend			
	APPROVED Apr 1, 2020	PROPOSED Apr 1, 2021	\$ Change	% Change	Jan 1, 2017	Jan 1, 2018	Apr 1, 2019	Apr 1, 2020
Applicable Tax Rate (Reference Only)	5.0%	5.0%						
<b>Gravel All Weather Fields</b>								
Youth Non-Profit	2.10	2.18	0.08	4%	2%	2%	2%	4%
Youth Non-Profit with Lighting	5.94	6.18	0.24	4%	2%	2%	2%	4%
Adult Non-Profit	9.04	9.40	0.36	4%	2%	2%	2%	4%
Adult Non-Profit with Lighting	11.41	11.87	0.46	4%	2%	2%	2%	4%
Other	12.72	13.23	0.51	4%	2%	2%	2%	4%
Other with Lighting	15.03	15.63	0.60	4%	2%	2%	2%	4%
<b>Volleyball Court - Sand - Court / hr</b>								
Youth Non-Profit	2.06	2.14	0.08	4%	2%	2%	2%	2%
Adult Non-Profit	3.76	3.91	0.15	4%	2%	2%	2%	2%
Other	6.00	6.24	0.24	4%	2%	5%	2%	2%
<b>Tennis Court (Clubs &amp; Tournaments)</b>								
Youth Non-Profit	2.06	2.14	0.08	4%	2%	2%	2%	2%
Adult Non-Profit	3.76	3.91	0.15	4%	2%	2%	2%	2%
Other	6.00	6.24	0.24	4%	2%	5%	2%	2%
<b>Tennis Court - Pay Tennis in Stanley Park</b> (per half hour)								
May to September	7.17	7.46	0.29	4%	2%	2%	2%	2%
Out-of-Season Special Bookings (min. booking)	243.96	253.72	9.76	4%	2%	2%	2%	2%
<b>Tennis Racquet Rental</b>	3.14	3.27	0.13	4%	2%	2%	2%	2%
<b>Outdoor Sport Court (i.e. Basketball, Ball Hockey)</b>								
Youth Non-Profit	2.06	2.14	0.08	4%	2%	2%	2%	2%
Adult Non-Profit	17.00	17.68	0.68	4%	2%	2%	2%	2%
Other	17.51	18.21	0.70	4%	2%	5%	2%	2%
<b>Bleacher Rentals (per event, with additional fees for set up, if required)</b>								
1 Bleacher	1,850.00	1,850.00	0.00	0%	-	-	-	-
2 Bleachers	3,500.00	3,500.00	0.00	0%	-	-	-	-
League discounts for facility rentals: Fall/Winter discount is 25%, Spring/Summer discount is 15%								
<b><u>FITNESS RENTALS</u></b>								
<b>Full Studio Rentals: Fitness Centres &amp; Cycle Studios</b>								
Tier 1	250.00	250.00	0.00	0%	-	-	-	-
Tier 2	200.00	200.00	0.00	0%	-	-	-	-
Tier 3	175.00	175.00	0.00	0%	-	-	-	-

## Pool, Arena, Outdoor Sport, Fitness &amp; Raquet Court Recreation Rentals

Effective Date	FEE RATE PROPOSAL (Excluding Taxes)				Historical PoP % Trend			
	APPROVED Apr 1, 2020	PROPOSED Apr 1, 2021	\$ Change	% Change	Jan 1, 2017	Jan 1, 2018	Apr 1, 2019	Apr 1, 2020
Applicable Tax Rate (Reference Only)	5.0%	5.0%						
<b><u>RACQUET COURT RENTALS</u></b>								
<b><i>Group 1 (Racquet Courts Only)</i></b>								
<b><i>Hastings Community Centre</i></b>								
<b>Adult</b>								
Prime Time	11.44	11.67	0.23	2%	2%	2%	2%	2%
Non-Prime Time	7.63	7.78	0.15	2%	2%	2%	2%	2%
Youth & Senior Discounts:	30% off	30% off						
<b>Single (per person, no reservations)</b>								
Adult	5.72	5.83	0.11	2%	2%	2%	2%	2%
Youth	4.01	4.09	0.08	2%	2%	2%	1%	2%
<b>10 Visit Racquet Court Pass (Group 1)</b>								
Prime Time	102.96	105.02	2.06	2%	2%	2%	2%	2%
Non-Prime Time	68.67	70.04	1.37	2%	2%	2%	2%	2%
<b><i>Group 2 (Includes Fitness Centre)</i></b>								
<b><i>Champlain, Dunbar, Marpole-Oakridge, West End</i></b>								
<b>Adult</b>								
Prime Time	14.79	15.09	0.30	2%	2%	2%	2%	2%
Non-Prime Time	10.56	10.77	0.21	2%	2%	2%	2%	2%
Youth & Senior Discounts:	30% off	30% off						
<b>Single (per person, no reservations)</b>								
Adult	7.40	7.54	0.14	2%	2%	2%	-1%	2%
Youth	5.18	5.28	0.10	2%	2%	2%	0%	2%
<b>10 Visit Racquet Court Pass (Group 2)</b>								
Prime Time	133.11	135.77	2.66	2%	2%	2%	2%	2%
Non-Prime Time	95.04	96.94	1.90	2%	2%	2%	2%	2%

## Golf - Fraserview

Effective Date	FEE RATE PROPOSAL (Excluding Taxes)				Historical PoP % Trend				
	APPROVED Jan 1, 2020	PROPOSED Jan 1, 2021	\$ Change	% Change	Jan 1, 2016	Jan 1, 2017	Jan 1, 2018	Jan 1, 2019	Jan 1, 2020
Applicable Tax Rate (Reference Only)	5.0%	5.0%							
<b>Winter (mid-Nov to mid-March)</b>									
<b>Adult (All days)</b>									
Regular 18 holes	36.50	37.23	0.73	2%	-	3%	-	1%	-
Twilight	29.50	30.09	0.59	2%	-	4%	-	2%	-
Sunset	21.25	21.68	0.43	2%	-	5%	-	1%	-
Back 9 (Front 9 not available)	15.25	15.56	0.31	2%	-	-	-	2%	-
<b>Early Spring / Late Fall</b>									
<b>Adult (All days)</b>									
Regular 18 holes	47.43	48.38	0.95	2%	-	-	-	1%	2%
Twilight	38.25	39.02	0.77	2%	-	-	-	1%	2%
Sunset	26.78	27.31	0.54	2%	-	-	-	1%	2%
Back 9 / Front 9	20.66	21.07	0.41	2%	-	-	-	1%	2%
<b>Late Spring / Early Fall</b>									
<b>Adult (Monday to Thursday)</b>									
Regular 18 holes	53.04	54.10	1.06	2%	-	-	-	2%	2%
Twilight	42.84	43.70	0.86	2%	-	-	-	2%	2%
Sunset	30.09	30.69	0.60	2%	-	-	-	2%	2%
Back 9 / Front 9	22.95	23.41	0.46	2%	-	-	-	2%	2%
<b>Adult (Friday to Sunday, Incl. Holidays)</b>									
Regular 18 holes	58.14	59.30	1.16	2%	-	-	-	2%	2%
Twilight	46.92	47.86	0.94	2%	-	-	-	2%	2%
Sunset	33.15	33.81	0.66	2%	-	-	-	2%	2%
Back 9 / Front 9	26.01	26.53	0.52	2%	-	-	-	2%	2%
<b>Summer</b>									
<b>Adult (Monday to Thursday)</b>									
Regular 18 holes	62.22	63.46	1.24	2%	-	-	-	2%	2%
Twilight	46.92	47.86	0.94	2%	-	-	-	2%	2%
Sunset	32.13	32.77	0.64	2%	-	-	-	2%	2%
Back 9 / Front 9	27.03	27.57	0.54	2%	-	-	-	2%	2%
<b>Adult (Friday to Sunday, incl. Holidays)</b>									
Regular 18 holes	68.34	69.71	1.37	2%	-	-	-	2%	2%
Twilight	52.02	53.06	1.04	2%	-	-	-	2%	2%
Sunset	35.19	35.89	0.70	2%	-	-	-	1%	2%
Back 9 / Front 9	30.09	30.69	0.60	2%	-	-	-	2%	2%
<b>Discounts:</b>									
Seniors Rate (excluding Saturday, Sundays, and Holidays)	30% off	30% off			-	-	-	-	-
Youth, and Child Rate	50% off	50% off			-	-	-	-	-

## Golf - McCleery

Effective Date	FEE RATE PROPOSAL (Excluding Taxes)				Historical PoP % Trend				
	APPROVED Jan 1, 2019	PROPOSED Jan 1, 2021	\$ Change	% Change	Jan 1, 2016	Jan 1, 2017	Jan 1, 2018	Jan 1, 2019	Jan 1, 2020
Applicable Tax Rate (Reference Only)	5.0%	5.0%							
<b>Winter (mid-Nov to mid-March)</b>									
<b>Adult (All days)</b>									
Regular 18 holes	33.50	34.17	0.67	2.0%	-	3%	-	2%	-
Twilight	27.50	28.05	0.55	2.0%	-	4%	-	2%	-
Sunset	19.25	19.64	0.39	2.0%	-	6%	-	1%	-
Back 9 (Front 9 not available)	14.25	14.54	0.29	2.0%	-	-	-	2%	-
<b>Early Spring / Late Fall</b>									
<b>Adult (All days)</b>									
Regular 18 holes	42.33	43.18	0.85	2.0%	-	-	-	1%	2%
Twilight	34.17	34.85	0.68	2.0%	-	-	-	2%	2%
Sunset	23.72	24.19	0.47	2.0%	-	-	-	1%	2%
Back 9 / Front 9	18.62	18.99	0.37	2.0%	-	-	-	1%	2%
<b>Late Spring / Early Fall</b>									
<b>Adult (Monday to Thursday)</b>									
Regular 18 holes	47.94	48.90	0.96	2%	-	-	-	2%	2%
Twilight	38.76	39.54	0.78	2%	-	-	-	3%	2%
Sunset	27.03	27.57	0.54	2%	-	-	-	2%	2%
Back 9 / Front 9	20.91	21.33	0.42	2%	-	-	-	2%	2%
<b>Adult (Friday to Sunday, Incl. Holidays)</b>									
Regular 18 holes	53.04	54.10	1.06	2%	-	-	-	2%	2%
Twilight	42.84	43.70	0.86	2%	-	-	-	2%	2%
Sunset	30.09	30.69	0.60	2%	-	-	-	2%	2%
Back 9 / Front 9	22.95	23.41	0.46	2%	-	-	-	2%	2%
<b>Summer</b>									
<b>Adult (Monday to Thursday)</b>									
Regular 18 holes	58.14	59.30	1.16	2%	-	-	-	2%	2%
Twilight	43.86	44.74	0.88	2%	-	-	-	2%	2%
Sunset	30.09	30.69	0.60	2%	-	-	-	2%	2%
Back 9 / Front 9	26.01	26.53	0.52	2%	-	-	-	2%	2%
<b>Adult (Friday to Sunday, incl. Holidays)</b>									
Regular 18 holes	64.26	65.55	1.29	2%	-	-	-	2%	2%
Twilight	48.96	49.94	0.98	2%	-	-	-	2%	2%
Sunset	33.15	33.81	0.66	2%	-	-	-	2%	2%
Back 9 / Front 9	28.05	28.61	0.56	2%	-	-	-	2%	2%
<b>Discounts:</b>									
Seniors Rate (excluding Saturday, Sundays, and Holidays)	30% off	30% off			-	-	-	-	-
Youth, and Child Rate	50% off	50% off			-	-	-	-	-

## Golf - Langara

Effective Date	FEE RATE PROPOSAL (Excluding Taxes)				Historical PoP % Trend				
	APPROVED Jan 1, 2019	PROPOSED Jan 1, 2021	\$ Change	% Change	Jan 1, 2016	Jan 1, 2017	Jan 1, 2018	Jan 1, 2019	Jan 1, 2020
Applicable Tax Rate (Reference Only)	5.0%	5.0%							
<b>Winter (mid-Nov to mid-March)</b>									
<b>Adult (All days)</b>									
Regular 18 holes	28.25	28.82	0.57	2%	-	4%	-	1%	-
Twilight	23.25	23.72	0.47	2%	-	5%	-	1%	-
Sunset	16.00	16.32	0.32	2%	-	7%	-	-	-
Back 9 (Front 9 not available)	12.00	12.24	0.24	2%	-	-	-	-	-
<b>Early Spring / Late Fall</b>									
<b>Adult (All days)</b>									
Regular 18 holes	38.00	38.75	0.76	2%	-	-	-	1%	2%
Twilight	30.86	31.47	0.62	2%	-	-	-	1%	2%
Sunset	21.42	21.85	0.43	2%	-	-	-	-	2%
Back 9 / Front 9	17.34	17.69	0.35	2%	-	-	-	-	2%
<b>Late Spring / Early Fall</b>									
<b>Adult (Monday to Thursday)</b>									
Regular 18 holes	43.86	44.74	0.88	2%	-	-	-	2%	2%
Twilight	35.70	36.41	0.71	2%	-	-	-	3%	2%
Sunset	24.99	25.49	0.50	2%	-	-	-	2%	2%
Back 9 / Front 9	19.89	20.29	0.40	2%	-	-	-	3%	2%
<b>Adult (Friday to Sunday, Incl. Holidays)</b>									
Regular 18 holes	48.96	49.94	0.98	2%	-	-	-	2%	2%
Twilight	39.78	40.58	0.80	2%	-	-	-	3%	2%
Sunset	28.05	28.61	0.56	2%	-	-	-	2%	2%
Back 9 / Front 9	21.93	22.37	0.44	2%	-	-	-	2%	2%
<b>Summer</b>									
<b>Adult (Monday to Thursday)</b>									
Regular 18 holes	54.06	55.14	1.08	2%	-	-	-	2%	2%
Twilight	40.80	41.62	0.82	2%	-	-	-	3%	2%
Sunset	27.03	27.57	0.54	2%	-	-	-	2%	2%
Back 9 / Front 9	23.97	24.45	0.48	2%	-	-	-	2%	2%
<b>Adult (Friday to Sunday, incl. Holidays)</b>									
Regular 18 holes	60.18	61.38	1.20	2%	-	-	-	2%	2%
Twilight	45.90	46.82	0.92	2%	-	-	-	2%	2%
Sunset	31.11	31.73	0.62	2%	-	-	-	2%	2%
Back 9 / Front 9	26.01	26.53	0.52	2%	4%	-	-	2%	2%
<b>Discounts:</b>									
Seniors Rate (excluding Saturday, Sundays, and Holidays)	30% off	30% off			-	-	-	-	-
Youth, and Child Rate	50% off	50% off			-	-	-	-	-

## Golf - Pitch &amp; Putt

Effective Date	FEE RATE PROPOSAL (Excluding Taxes)				Historical PoP % Trend				
	APPROVED Jan 1, 2019	PROPOSED Jan 1, 2021	\$ Change	% Change	Jan 1, 2016	Jan 1, 2017	Jan 1, 2018	Jan 1, 2019	Jan 1, 2020
Applicable Tax Rate (Reference Only)	5.0%	5.0%							
<b>STANLEY PARK &amp; QUEEN ELIZABETH PITCH &amp; PUTT</b>									
<b>Regular 18 Holes</b>									
Adult	13.84	14.12	0.28	2%	-	5%	-	-	2%
Senior/Youth (30% discount)	9.69	9.88	0.19	2%	-	7%	-	-	-3%
<b>RUPERT PITCH &amp; PUTT</b>									
<b>Regular 18 Holes</b>									
Adult	13.84	14.12	0.28	2%	2%	7%	-	2%	4%
Senior/Youth (30% discount)	9.69	9.88	0.19	2%	4%	7%	-	2%	-
<b>20 Round Punch Card</b>									
Adult	207.62	211.77	4.15	2%	-	5%	-	2%	2%
Senior/Youth (30% discount)	145.33	148.24	2.91	2%	-	4%	-	2%	2%
<b>Monthly Pass</b>									
Adult	76.79	78.33	1.54	2%	-	5%	-	2%	2%
Senior/Youth (30% discount)	54.34	55.42	1.09	2%	-	6%	-	1%	2%
<b>Rentals</b>									
Club/Caddy Rentals & Ball Purchases	2.04	2.08	0.04	2%	12%	-	-	-	2%
<b>Locker Rentals - Seasonal</b>									
Adult	43.71	44.59	0.87	2%	-	2%	-	-	2%
Senior/Youth (30% discount)	30.60	31.21	0.61	2%	-	2%	-	-	-1%

NOTE: During the winter, pitch and putt play is offered at no charge.

**Bloedel Conservatory**

Effective Date	FEE RATE PROPOSAL (Excluding Taxes)				Historical PoP % Trend				
	APPROVED Jan 1, 2020	PROPOSED Jan 1, 2021	\$ Change	% Change	Jan 1, 2016	Jan 1, 2017	Jan 1, 2018	Jan 1, 2019	Jan 1, 2020
Applicable Tax Rate (Reference Only)	5.0%	5.0%							
<b>General Admission</b>									
Adult	6.90	7.05	0.15	2%	13%	1%	-	4%	2%
Senior (30% discount)	4.70	4.80	0.10	2%	13%	1%	-	5%	3%
Youth (30% discount)	4.70	4.80	0.10	2%	13%	1%	-	5%	3%
Child (50% discount)	3.45	3.55	0.10	3%	8%	2%	-	5%	5%
Preschool	Free	Free	n/a	n/a	-	-	-	-	-
Association Member	Free	Free	n/a	n/a	-	-	-	-	-
Discounts:									
Group Rates (+10 people)	10% off	10% off			-	-	-	-	-



## VanDusen Botanical Garden

Effective Date	FEE RATE PROPOSAL (Excluding Taxes)				Historical PoP % Trend				
	APPROVED Jan 1, 2020	PROPOSED Jan 1, 2021	\$ Change	% Change	Jan 1, 2016	Jan 1, 2017	Jan 1, 2018	Jan 1, 2019	Jan 1, 2020
Applicable Tax Rate (Reference Only)	5.0%	5.0%							
<b><u>General Admissions</u></b>									
<b>Fall/Winter (Oct 1 - Mar 31)</b>									
Adult	8.20	8.40	0.20	2%	3.1%	1.8%	-	-	2.5%
Youth (30% discount)	5.75	5.90	0.15	3%	-	0.4%	-	-	4.5%
Senior (30% discount)	5.75	5.90	0.15	3%	-	0.4%	-	-	4.5%
Child (50% discount)	4.10	4.20	0.10	2%	-	5.0%	-	-	-3.5%
Preschool	Free	Free	n/a		-	-	-	-	-
<b>Spring/Summer (Apr 1 - Sep 30)</b>									
Adult	11.50	11.70	0.20	2%	2%	3%	2%	-	2%
Youth (30% discount)	8.05	8.20	0.15	2%	3%	2%	2%	-	-5%
Senior (30% discount)	8.05	8.20	0.15	2%	3%	2%	2%	-	-5%
Child (50% discount)	5.75	5.85	0.10	2%	-	0%	-	-	5%
Preschool	Free	Free	n/a		-	-	-	-	-
<b><u>General Admission Discounts:</u></b>									
Group Rates (+10 people)	10% off	10% off			-	-	-	-	-
<b><u>Special Purpose Admission</u></b>									
<b><u>Wedding Photographs</u></b>									
Up to 4 People	92.00	94.00	2.00	2%	2%	2%	5%	2%	2%
5-8 People	177.00	181.00	4.00	2%	2%	2%	5%	2%	2%
9-15 People	251.00	256.00	5.00	2%	2%	2%	5%	2%	2%

## VanDusen Rentals

Effective Date	FEE RATE PROPOSAL (Excluding Taxes)				Historical PoP % Trend			
	APPROVED Jan 1, 2020	PROPOSED Jan 1, 2021	\$ Change	% Change	Dec 1, 2016	Jan 1, 2017	Jan 1, 2018	Jan 1, 2019
Applicable Tax Rate (Reference Only)	5.0%	5.0%						
<b>RENTAL PRICING</b>								
<b>Floral Hall</b>								
<b>Public and Commercial</b>								
Day or Evening	840.00	855.00	15.00	2%	1.9%	1.8%	1.9%	2.0%
Both	1,365.00	1,395.00	30.00	2%	1.9%	1.8%	1.9%	2.0%
Charitable/Non-Profit Groups - 33.5% discount								
Horticultural Groups - 70% discount								
<b>Cedar Room</b>								
<b>Public and Commercial</b>								
Day or Evening	275.00	280.00	5.00	2%	2%	1%	2%	2%
Both	460.00	470.00	10.00	2%	2%	3%	2%	2%
Charitable/Non-Profit Groups - 33.5% discount								
Horticultural Groups - 70% discount								
<b>Film Production (plus damage deposit)</b>	4,275.00	4,275.00	-	0%	33%	5%	2%	2%

## VanDusen Rentals - Visitor Ctr

Effective Date	FEE RATE PROPOSAL (Excluding Taxes)				Historical PoP % Trend				
	APPROVED Jan 1, 2020	PROPOSED Jan 1, 2021	\$ Change	% Change	Oct 1, 2016	Jan 1, 2017	Jan 1, 2018	Jan 1, 2019	Jan 1, 2020
Applicable Tax Rate (Reference Only)	5.0%	5.0%							
<b>Peggy Gunn Woodland Hall A or Peggy Gunn Woodland Hall B</b>									
<b>Public and Commercial</b>									
Day or Evening	475.00	485.00	10.00	2%	-	2%	2%	2%	2%
Day + Evening	775.00	790.00	15.00	2%	-	2%	2%	2%	2%
Charitable/Non-Profit Groups - 33.5% discount									
<b>Peggy Gunn Woodland Hall A &amp; B</b>									
<b>Public and Commercial</b>									
Day or Evening	950.00	970.00	20.00	2%	-	2%	2%	2%	2%
Day + Evening	1,550.00	1,580.00	30.00	2%	-	2%	2%	2%	2%
Charitable/Non-Profit Groups - 33.5% discount									
<b>BMO Great Hall</b>									
<b>Public and Commercial</b>									
Day or Evening	950.00	970.00	20.00	2%	-	2%	2%	2%	2%
Day + Evening	1,550.00	1,580.00	30.00	2%	-	2%	2%	2%	2%
Charitable/Non-Profit Groups - 33.5% discount									
<b>BMO Great Hall + Peggy Gunn Woodland Hall A &amp; B</b>									
<b>Public and Commercial</b>									
Day or Evening	1,895.00	1,935.00	40.00	2%	-	2%	2%	2%	2%
Day + Evening	3,100.00	3,160.00	60.00	2%	-	2%	2%	2%	2%
Charitable/Non-Profit Groups - 33.5% discount									
<b>BMO Great Hall &amp; Peggy Gunn Woodland A</b>									
<b>Public and Commercial</b>									
Day or Evening	1,425.00	1,455.00	30.00	2%	-	2%	2%	2%	2%
Day + Evening	2,325.00	2,370.00	45.00	2%	-	2%	2%	2%	2%
Charitable/Non-Profit Groups - 33.5% discount									

## VanDusen Rentals - Lawn &amp; Other

Effective Date	FEE RATE PROPOSAL (Excluding Taxes)				Historical PoP % Trend				
	APPROVED Jan 1, 2020	PROPOSED Jan 1, 2021	\$ Change	% Change	Oct 1, 2016	Jan 1, 2017	Jan 1, 2018	Jan 1, 2019	Jan 1, 2020
Applicable Tax Rate (Reference Only)	5.0%	5.0%							
<b>Atrium (Joseph Segal Family Atrium) and Arrival Hall (HSBC Arrival Hall)</b>									
Public and Commercial - evening	765.00	780.00	15.00	2%	-	-	-	-	2%
Charitable/Non-Profit Groups - 33.5% discount									
<b>FULL PLAZA (in conjunction GH/WA&amp;B, Atrium, Arrival Hall)</b>									
Public or Commercial Rate - Evening only	995.00	1,015.00	20.00	2%	-	2%	3%	2%	-
Charitable/Non-Profit Groups - 33.5% discount									
<b>A&amp;B PLAZA WITH TENT (in conjunction with GH/WA&amp;B)</b>									
<b>GREAT LAWN WEDDING CEREMONY</b>	2,010.00	2,050.00	40.00	2%	-	2%	-	4%	2%
<b>HERON LAKE WEDDING CEREMONY</b>	2,010.00	2,050.00	40.00	2%	-	2%	-	4%	2%
<b>MEADOW POND WEDDING CEREMONY</b>	705.00	720.00	15.00	2%	-	2%	-	2%	2%
<b>GREAT LAWN WEDDING CEREMONY &amp; RECEPTION</b>	3,915.00	3,995.00	80.00	2%	-	2%	-	4%	2%
<b>GREAT LAWN SPECIAL EVENTS</b>	2,600.00	2,675.00	75.00	3%	-	2%	3%	2%	2%
Charitable/Non-Profit Groups - 33.5% discount									
<b>GARDEN CONSUMER SHOWS</b>									
<b>Great Lawn</b>	2,690.00	2,750.00	60.00	2%	-	2%	2%	2%	2%
Move In/Move Out	1,345.00	1,375.00	30.00	2%	-	2%	2%	2%	2%
<b>Great Lawn &amp; Fairway</b>	5,470.00	5,580.00	110.00	2%	-	2%	2%	4%	2%
Move In/Move Out	2,735.00	2,790.00	55.00	2%	-	2%	2%	4%	2%
<b>Visitor Centre Classroom</b>									
<b>Public or Commercial Rate</b>									
Day or Evening	475.00	485.00	10.00	2%	-	2%	2%	2%	2%
Day & Evening	775.00	790.00	15.00	2%	-	2%	2%	2%	2%
Charitable/Non-Profit Groups - 33.5% discount									
<b>Magnolia Room (8am-5pm only)</b>									
Public or Commercial Rate	321.00	330.00	9.00	3%	-	2%	3%	2%	2%
Charitable/Non-Profit Groups - 33.5% discount									
<b>Visitor Centre Discovery Hall (with fixtures - negotiable)</b> (in conjunction with a 3VC hall booking)	167.00	175.00	8.00	5%	-	2%	3%	2%	2%

## Stanley Park Train

Effective Date	FEE RATE PROPOSAL (Excluding Taxes)				Historical PoP % Trend				
	APPROVED Jan 1, 2020	PROPOSED Jan 1, 2021	\$ Change	% Change	Jan 1, 2016	Jan 1, 2017	Jan 1, 2018	Jan 1, 2019	Jan 1, 2020
Applicable Tax Rate (Reference Only)	5.0%	5.0%							
<b><u>STANDARD PROGRAM PRICING</u></b>									
<b>Miniature Railway</b>									
Adult	7.00	7.25	0.25	4%	-	2%	-	-	3%
Youth *	5.00	5.00	0.00	0%	-	2%	-	-	3%
Senior *	5.00	5.00	0.00	0%	-	2%	-	-	3%
Child *	3.50	3.75	0.25	7%	-	2%	-	-	3%
Family	at child rate	at child rate	n/a		-	-	-	-	-
<b>Discounts:</b>									
Group Rate (10 or more)	20% off	20% off			-	-	-	-	-

\* Aged-based discount applied, rounded to nearest quarter.