



VANPLAY ANNUAL REPORT

Year In Review &
Implementation Update

Regular Board Meeting
Monday, December 13, 2021
*deferred from Nov 29/21



PURPOSE OF THE PRESENTATION



- To provide an update on the progress of VanPlay's implementation of the Playbook, using the new VanPlay Framework approved by the Board in October of 2020.
- To provide an update on the Park Board's Accomplishments for 2021, as the official "Year-In-Review"



AGENDA



1. Introduction & VanPlay Refresher
2. VanPlay's Impact
3. 2021 Implementation Update (The **PlayBook**)
 - Deliver Services Equitably
 - Welcome Everyone
 - Weave The City Together
4. *Looking Forward*: Challenges Ahead & Next Steps





The Park Board's Parks and Recreation Services Master Plan is the organization's **decision making guide**. It expresses the **priorities, tools and policies** to support the pursuit of **equity, connectivity and access** to parks and recreation for all.

**Vancouver is within the
unceded traditional
territory of the
Musqueam, Squamish
and Tsleil-Waututh
Nations**



VANPLAY REPORTS



1

INVENTORY & ANALYSIS

A compilation of the **current state** of the City's parks and recreation system.

July 2018



2

10 GOALS TO SHAPE THE NEXT 30 YEARS

Aspirational statements for the future

July 2018



3

STRATEGIC BOLD MOVES

Outlines three **tools** to create a more connected and equitable future: **Equity, Connectivity and Asset Needs**

October 2019



4

THE PLAYBOOK

The plan for **implementation** and operationalization.

October 2019

VANPLAY REPORTS



2

10 GOALS TO SHAPE THE NEXT 30 YEARS

Aspirational statements for the future



3

STRATEGIC BOLD MOVES

Outlines three **tools**: Equity, Connectivity and Asset Needs



4

THE PLAYBOOK

The plan for **implementation** and operationalization.



VANPLAY REPORTS



5

VANPLAY FRAMEWORK

Brings together all components of VanPlay in one place and provides a framework for streamlining decisions

October 2020

VANPLAY FRAMEWORK





VanPlay Framework:

- 1 Mission
- 1 Vision
- 1 Purpose Statement
- 10 Goals
- 3 Directions
- 3 Bold Moves
- 24 Approaches for Action

VANPLAY FRAMEWORK

**Deliver
Services
Equitably**

A fair and
effective parks
and recreation
system.

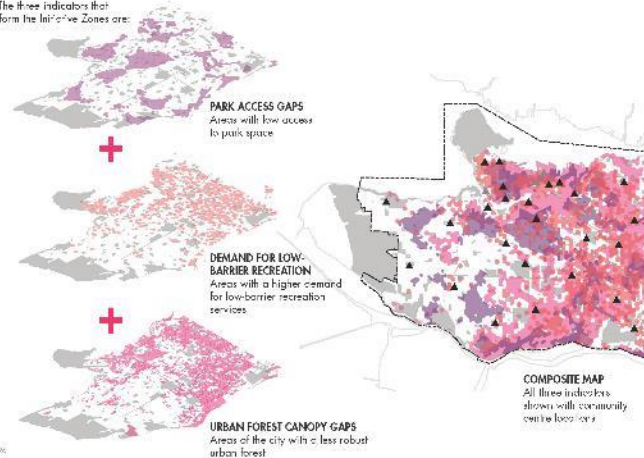


Bold Move: Equity

APPROACH

INITIATIVE ZONES MAPPING

The three indicators that
form the Initiative Zones are:



- Equity Initiative Zones map
- address inequities
- Identify and challenge colonial structures
- Nurture partnerships

VANPLAY FRAMEWORK



Bold Move: Asset Needs

ASSET TARGET SNAPSHOT

DISTANCE TO ASSETS

This diagram describes the relative location of assets relative to residents' homes.



- Meet Asset Targets increasing the capacity and quantity
- Provide safe, clean and welcoming parks and recreation spaces.
- Reduce barriers to access
- Listen, learn and co-create



Welcome
Everyone

Parks and
recreation
experiences
that improve
quality of life.

VANPLAY FRAMEWORK

Parks, nature,
recreation
and culture
integrated into
everyday life.



**Weave
the City
Together**

Bold Move: Connectivity

CONNECTIVITY

GUIDING PRINCIPLES

This vision is guided by four main principles:

1. Thriving, inclusive communities



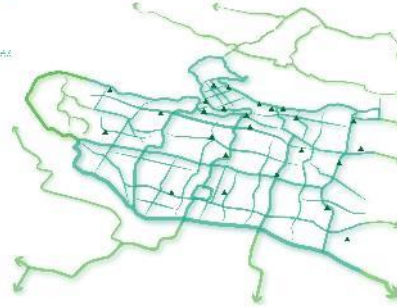
2. Flow of water



3. Sense of place



4. Thriving ecosystems



- routes to parks and recreation places
- Thread the unique history
- Provide flexible amenities
- improve the quality of rainwater
- Connect and enrich ecosystems



VANPLAY'S
IMPACT

VANPLAY'S IMPACT



VancouverPlan's "Three Big Ideas"



Equitable Housing + Complete
Neighbourhoods



An Economy That
Works for All



Climate Protection + Restored
Ecosystems

VANPLAY'S IMPACT

VancouverPlan's "Three Big Ideas"



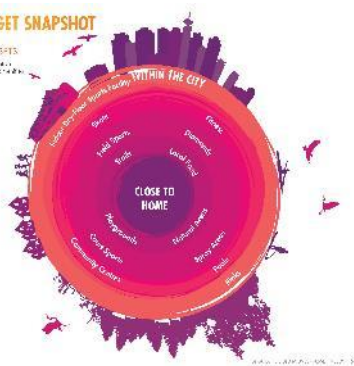
Equitable Housing + Complete Neighbourhoods



An Economy That Works for All

ASSET TARGET SNAPSHOT

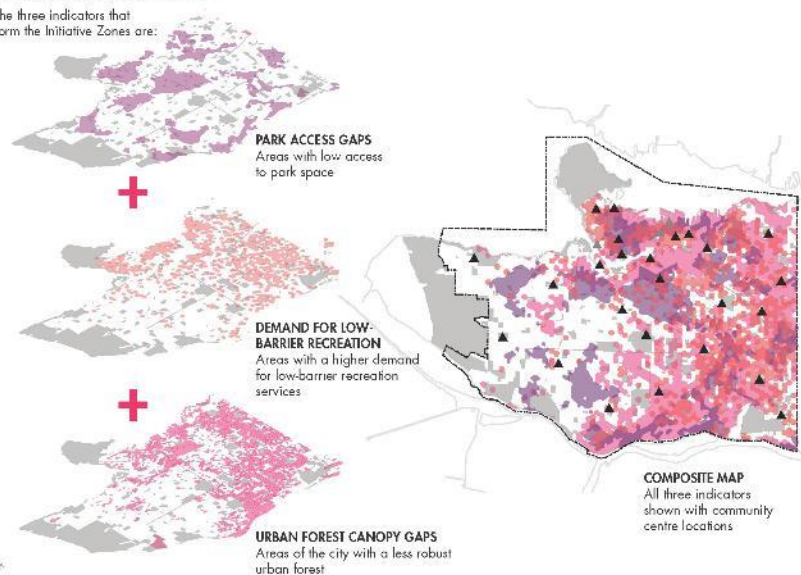
DISTANCE TO ASSETS
Distance to assets
Distance to assets
Distance to assets



APPROACH

INITIATIVE ZONES MAPPING

The three indicators that form the Initiative Zones are:



VANPLAY'S IMPACT

VancouverPlan & VanPlay's Connectivity Bold Move

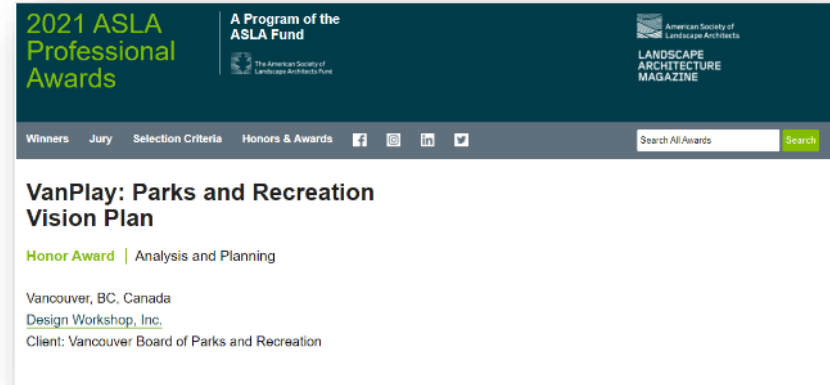


Climate Protection + Restored
Ecosystems



VANPLAY'S IMPACT

VanPlay Wins 2021 ASLA National Honour Award



"Vancouver boasts 631,000 residents speaking 191 languages, yet the city's areas for recreation—some 3,200 acres of parks including the 1,001-acre Stanley Park—manage to respond to unique needs of individuals and specific groups through the VanPlay Vision Plan" – 2021 Awards Jury

VANPLAY'S IMPACT



New Department Formed – Strategic Operations & Board Relations



Sarah Iacoe, Director



John Brodie, Acting Director



VANPLAY'S IMPACT



Capital Planning



VANPLAY'S IMPACT

Getting Through the COVID-19 Pandemic Together



Vancouver Park Board: REOPENING & RECOVERY

Vancouver residents have led by example over the past weeks in their conscientious response to the COVID-19 pandemic. As a result of this helpful behaviour, the BC government has now indicated it is safe to begin opening facilities. The Park Board, informed by existing policy and best practices, has developed a roadmap to guide decision making for reopening and recovery to ensure facilities and programs are brought back online thoughtfully and safely.

Guiding Principles

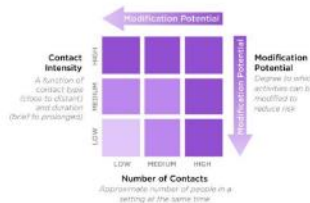


The Park Board's principles of decolonization asks us to be transparent, equitable, and to centre community health & wellness and non-colonial perspectives. These principles and current Park Board and City strategies inform the development of the guiding principles and phased reopening and recovery plan.

Reopening Process



Risk-based Decision-making



2021 Implementation Update



THE 'PLAYBOOK' AT A GLANCE

24 Approaches for Action

Groundwork



G.1

Policy Framework

G.2

Evidence Based
Decision Making

G.3

Customer
Service

G.4

Complete
Communities

G.5

Community
Engagement

G.6

Reconciliation

G.7

Partnerships

G.8

Arts & Culture

G.9

Stewardship

Parks



P.1

Safe, Clean &
Accessible

P.2

Connections &
Network

P.3

Protect &
Acquire

P.4

Responsive

P.5

Diversity

Recreation



R.1

Capacity, Quality +
Diversity

R.2

Sport for Life

R.3

Local Food

Facilities



F.1

Expand Access

F.2

Welcoming Spaces

Nature



N.1

Shoreline &
Waterway Integrity

N.2

Freshwater
Resources

N.3

Ecological
Network

N.4

Connection to
Nature

N.5

Urban Forest

3 Directions

DELIVER
SERVICES
EQUITABLY

EQUITY

A fair and effective parks
and recreation system

WELCOME
EVERYONE

ASSET TARGETS

Parks and recreation
experiences that improve
quality of life

WEAVE THE
CITY
TOGETHER

CONNECTIVITY

Parks, nature, recreation
and culture integrated into
everyday life

IMPLEMENTATION TIMELINE



DELIVER
SERVICES
EQUITABLY

Foundational

Ongoing

Short Term
(2023)

Medium Term
(2027)

Long Term
(2030)



WELCOME
EVERYONE



WEAVE THE
CITY
TOGETHER



178
Initiatives over the
next 10 years

IMPLEMENTATION TRACKING

VanPlay - Approaches for Action

INSTRUCTIONS:
1. Click the search button at the top and enter your name
[See More](#)

Main Table

Metrics - Categories

Department: lead

Collaborative Wiki

Rate of Completion

Table

Chart

Directions

TIMELINE

+ Add View

New Rank

Search

Person

Filter

1 / 1

Sort

Filter

Filter

Filter

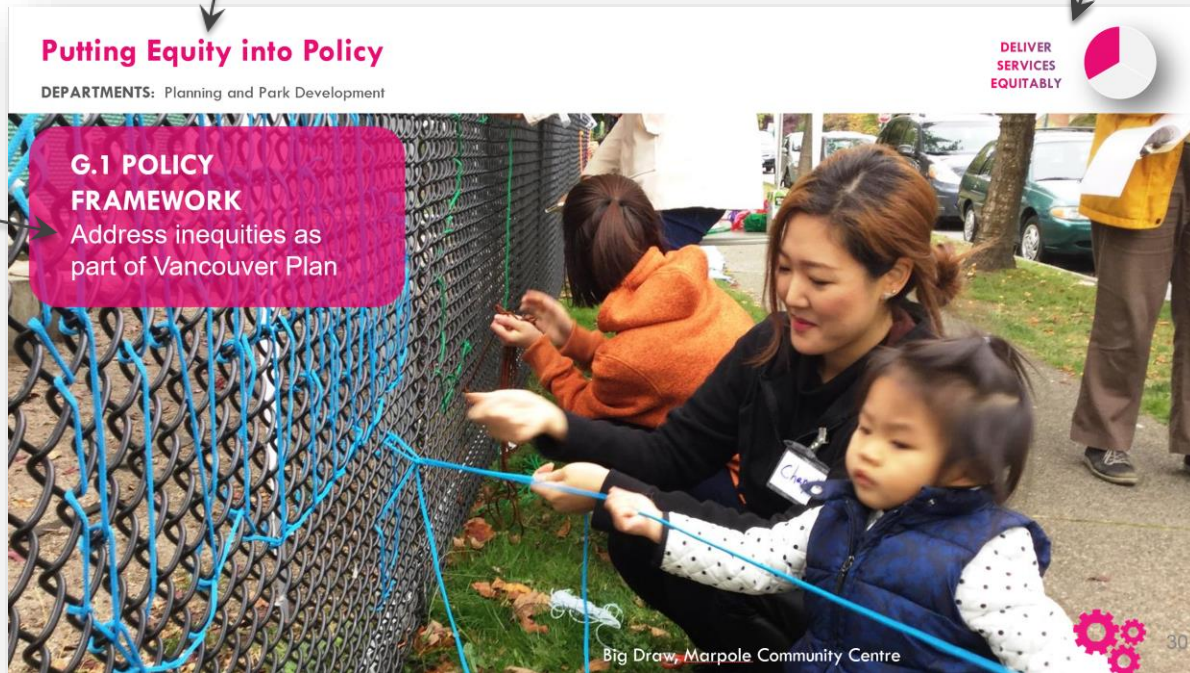
Wave the City Together	Chapter	Approach for Action	VPlay Framework	Timeline	Subitems	Full Description	FB Dept Lead	Supporting Dept	COV Depts L	VPLAY PRES STA
Develop a park protection policy	Foundational Task	Policy	Wave the City Together	1 - Foundational Task		Develop a park protection policy which aims to...	PPE	PD		Initiated
Advocate for DOL CAC Geographic Flexibility	Groundwork	0.4 Complete Communities	Wave the City Together	2 - Underway/Ongoing		Advocate for enabling additional flexibility in the...	PPE	Strategic Operations	REFM	Underway
Advocate for increased access, activation and quality of p...	Groundwork	0.4 Complete Communities	Wave the City Together	2 - Underway/Ongoing		Advocate for increased access, activation and q...	PPE	PD		Underway
Seek additional funding opportunities	Groundwork	0.4 Complete Communities	Wave the City Together	2 - Underway/Ongoing		Seek additional funding opportunities (foundati...	Events/Planning	Backshop Services		Initiated
Solar Access Study	Groundwork	0.4 Complete Communities	Wave the City Together	3 - Short Term		Seek to understand environmental and microcl...	PPE	Strategic Operations	PLDS	Initiated
Review Sustainable Large Sites Planning Policy	Groundwork	0.4 Complete Communities	Wave the City Together	3 - Short Term		Advocate for park and recreation provision reop...	PPE	Strategic Operations	PLDS	Not Started/Paused
Park Provision Policy	Groundwork	0.4 Complete Communities	Wave the City Together	3 - Short Term		Guide planning for adequate park land and recre...	PPE	Strategic Operations	PLDS	Underway
Climate Emergency Action Plan (CEAP) and Vancouver Plan	Groundwork	0.4 Complete Communities	Wave the City Together	3 - Short Term		Advocate for goals and targets that are aligned ...	PPE	Park Operations		Initiated
Cultural Kiosk at New Brighton	Groundwork	0.8 Arts & Culture	Wave the City Together	3 - Short Term		Design and install a cultural kiosk at New Bright...	PA	PA		Not Started/Paused
Commissionation Policy (formerly known as Monuments &...	Groundwork	0.8 Arts & Culture	Wave the City Together	3 - Short Term		Work with Arts, Culture and Community Service...	DAC	PD		Initiated
Sponsorship Policy	Groundwork	0.8 Arts & Culture	Wave the City Together	3 - Short Term		Articulate guiding principles and values to dicta...	Events/Planning	PA		Not Started/Paused
Community Conservation and Enhancement Study	Groundwork	0.4 Complete Communities	Wave the City Together	4 - Medium Term		Thoughtfully manage the impacts park renewal, ...	PPE	Recreation		Not Started/Paused
Funding mechanisms to support community arts and ArtL...	Groundwork	0.8 Arts & Culture	Wave the City Together	4 - Medium Term		Create funding mechanisms to support commu...	DAC	Strategic Operations		Underway
Cultural Frameworks	Groundwork	0.8 Arts & Culture	Wave the City Together	4 - Medium Term		Provide clear decision making guidance for out...	DAC	Strategic Operations		Not Started/Paused
Public Arts Strategy	Groundwork	0.8 Arts & Culture	Wave the City Together	4 - Medium Term		Strategically manage the commissioning donati...	DAC	PA	ADCS	Initiated
Collections Policy and Management Plan	Groundwork	0.8 Arts & Culture	Wave the City Together	4 - Medium Term		Steward and grow Park Board cultural assets (i...	DAC	PD		Initiated
Park Naming Policy and Procedures	Groundwork	0.8 Arts & Culture	Wave the City Together	4 - Medium Term		Increase cultural scalability and strengthen the...	DAC	PA		Underway
Park Assessment and Guidelines	Groundwork	0.8 Arts & Culture	Wave the City Together	4 - Medium Term		Align assessment of permits for use of parks w...	Events/Planning	Recreation		Not Started/Paused
Marine conservation plans	Water	N.1 Shoreline & Waterway Integ...	Wave the City Together	2 - Underway/Ongoing		Identify marine conservation zones to protect a...	PPE	Strategic Operations		Initiated

HOW THIS SECTION WORKS

Approach for
Action

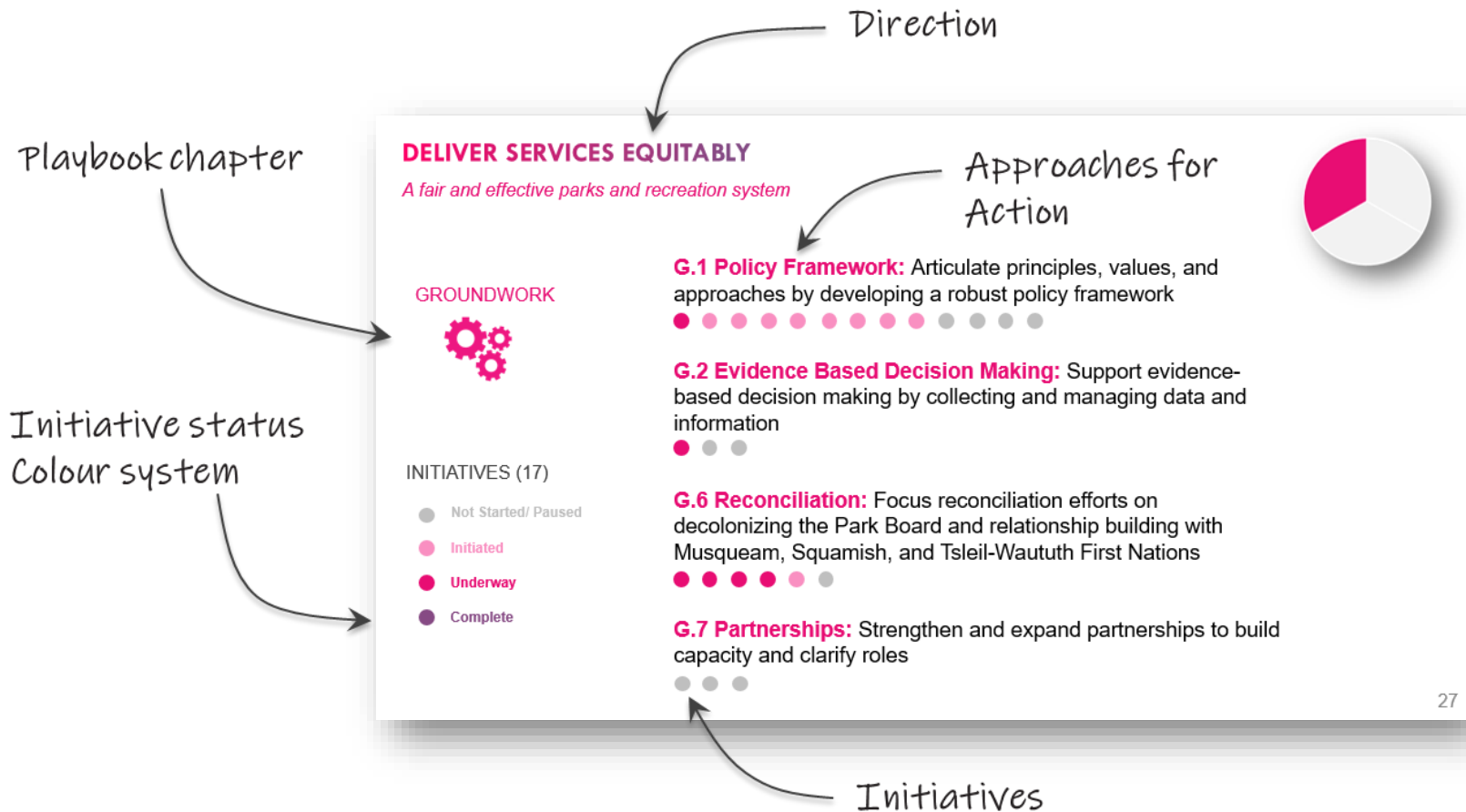
Achievement/ Highlight

Direction



Playbook Chapter

HOW THIS SECTION WORKS



Deliver Services Equitably



Putting Equity into Policy

DEPARTMENTS: Planning and Park Development

DELIVER
SERVICES
EQUITABLY



G.1 POLICY FRAMEWORK

Address inequities as
part of Vancouver Plan



Big Draw, Marpole Community Centre



A New Department - Decolonization, Arts & Culture

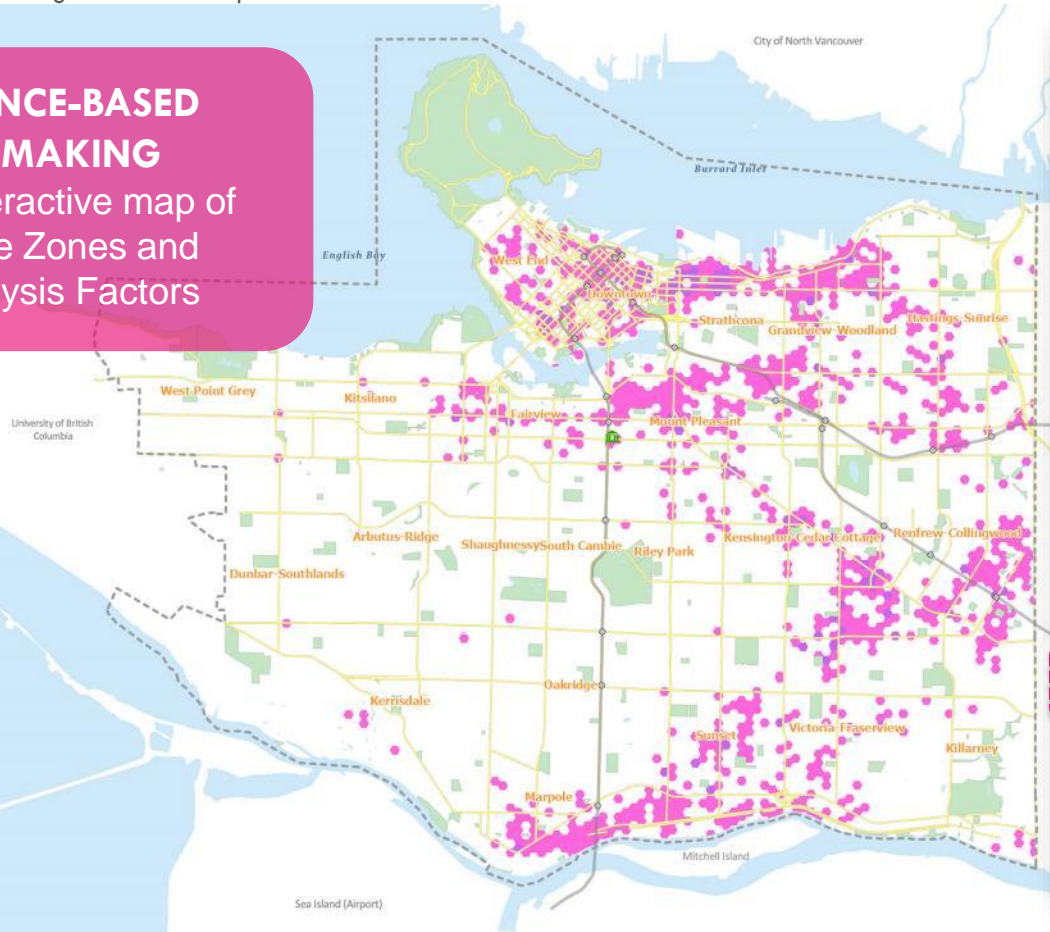
DEPARTMENTS: Planning & Park Development

DELIVER
SERVICES
EQUITABLY



G.2 EVIDENCE-BASED DECISION MAKING

Online, interactive map of
the Initiative Zones and
Equity Analysis Factors



Layer List

- ☒ Parks and Golf Courses ...
- ▶ ☐ Eagle Nest ...
- ▶ ☐ Eagle Nest Buffer ...
- ▶ ☐ Golf Course Surface Management ...
- ▶ ☐ Dog Off Leash Areas ...
- ▶ ☒ Ponds and Water Features ...
- ▶ ☐ Golf Courses and Pitch & Putt ...
- ▶ ☒ Park Polygons ...
- ▶ ☐ Demand For Low Barrier Recreation ...
- ▶ ☒ VanPlay Equity Initiative Zone ...
- ▶ ☐ Urban Forest Canopy Coverage ...
- ▶ ☐ Park Access Level ...
- ▶ ☐ Park Maintenance Areas ...



A New Department - Decolonization, Arts & Culture

DEPARTMENTS: Decolonization, Arts & Culture

DELIVER
SERVICES
EQUITABLY



Rena Soutar - Cha'an Dlut, Manager



Colonial Audit

DEPARTMENTS: Decolonization, Arts & Culture, Planning & Park Development

DELIVER
SERVICES
EQUITABLY



G.2

RECONCILIATION

Conduct a
comprehensive
colonial audit of the
Park Board.



Hives for Humanity, Cathedral Square Park
Photo credit: Monica Lovdahl



Decolonized process of collaborative stewardship

DEPARTMENTS: Decolonization, Arts & Culture

DELIVER
SERVICES
EQUITABLY



G.2 RECONCILIATION

Work towards a
decolonized process of
collaborative
stewardship



Local Food Systems Action Plan

DEPARTMENTS: Decolonization, Arts & Culture, Park Planning & Development

DELIVER
SERVICES
EQUITABLY

WELCOME
EVERYONE



Indigenous Food Landscape, Strathcona Community Garden

R.3
Local food



DELIVER SERVICES EQUITABLY

A fair and effective parks and recreation system



GROUNDWORK



INITIATIVES (17)

- Not Started/ Paused
- Initiated
- Underway
- Complete

G.1 Policy Framework: Articulate principles, values, and approaches by developing a robust policy framework



G.2 Evidence Based Decision Making: Support evidence-based decision making by collecting and managing data and information



G.6 Reconciliation: Focus reconciliation efforts on decolonizing the Park Board and relationship building with Musqueam, Squamish, and Tsleil-Waututh First Nations



G.7 Partnerships: Strengthen and expand partnerships to build capacity and clarify roles



DELIVER SERVICES EQUITABLY

A fair and effective parks and recreation system



17

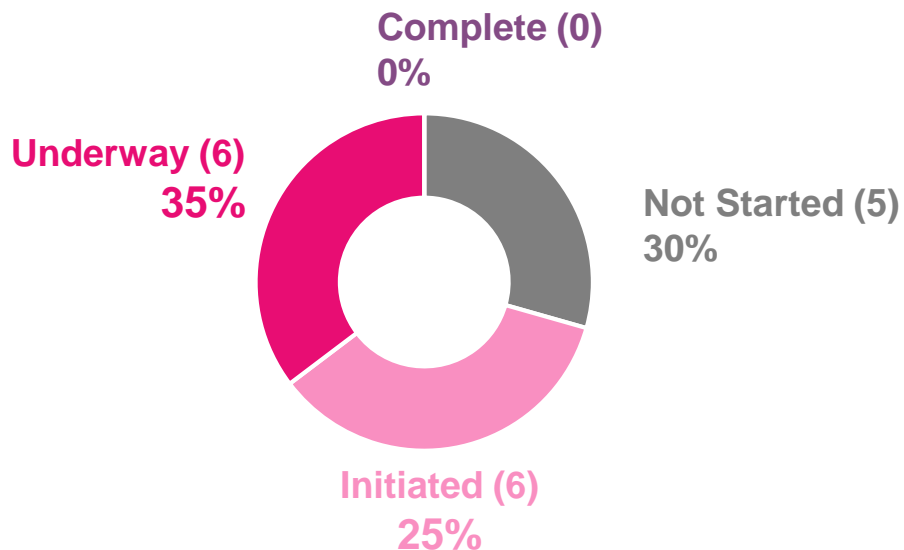
INITIATIVES TOTAL



INITIATIVES

- Not Started/ Paused
- Initiated
- Underway
- Complete

SUMMARY OF INITIATIVE STATUS





Welcome Everyone

Hard Assets Inventory

DEPARTMENTS: Planning and Park Development



WELCOME
EVERYONE



DATA & MAPPING - FOUNDATIONAL TASK

Complete the hard
assets inventory and
condition assessment of
park amenities and
features

GIS & Asset Management



The Growing Sport of Skateboarding

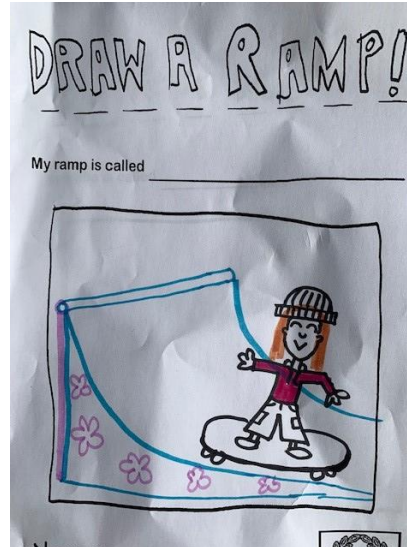
DEPARTMENTS: Planning and Park Development



WELCOME
EVERYONE



R.1 CAPACITY,
QUALITY &
DIVERSITY
Skateboarding
Strategy



Improving Off Leash Areas

DEPARTMENTS: Planning and Park Development



**WELCOME
EVERYONE**



**R.1 CAPACITY,
QUALITY & DIVERSITY**
People, Parks & Dog
Strategy Implementation



John Hendry Park
Master Plan Workshop



Oppenheimer Park Reopening

DEPARTMENTS: Park Operations, Park Planning & Development, & Communications



WELCOME
EVERYONE



P.1 Safe, Clean and
Accessible For All
G.5 Community Engagement

Managed an Increase of Use

DEPARTMENTS: Park Operations, Rangers



WELCOME
EVERYONE



Alcohol in Parks Pilot Program



COVID-19 Pandemic



Stanley Park



P.1 Safe, Clean
& Accessible for All
P.4 Responsive

Stanley Park Fire Risk



2021 Heat Dome

Alcohol in Parks Pilot Program

DEPARTMENTS: Park Operations, Rangers and Planning and Park Development



WELCOME
EVERYONE



P.5 DIVERSITY

Park activation
feasibility study



Alcohol in Parks Pilot (2021) ⁴³

Commercial Operations COVID-19 Response & Recovery

DEPARTMENTS: Commercial Operations, Park Operations



WELCOME
EVERYONE



VanDusen Botanical Gardens



VanDusen Botanical Gardens



P.1 Safe, Clean
& Accessible

Bloedel Conservatory



Patios in Parks Expansions



Stanley Park Summer Train

Golf Operations

DEPARTMENTS: Commercial Operations, Park Operations, Recreation



WELCOME
EVERYONE



Langara Golf Course



R.1 Capacity,
Quality &
Diversity



Fraserview Golf Course

VanDusen and Bloedel Strategic Plan

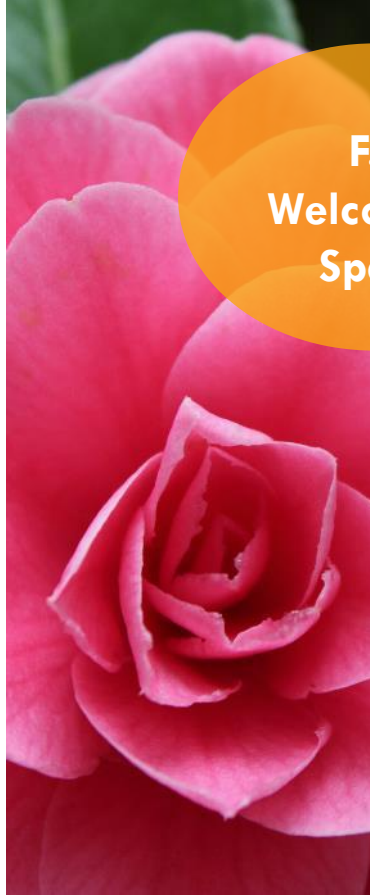
DEPARTMENTS: Commercial Operations, Planning, Policy & Environment



WELCOME
EVERYONE



F.2 Welcoming Space



Communications by the Numbers

DEPARTMENT: Communications

Foundational Task



WELCOME
EVERYONE



18,000 followers
(+up 221 from 2020)

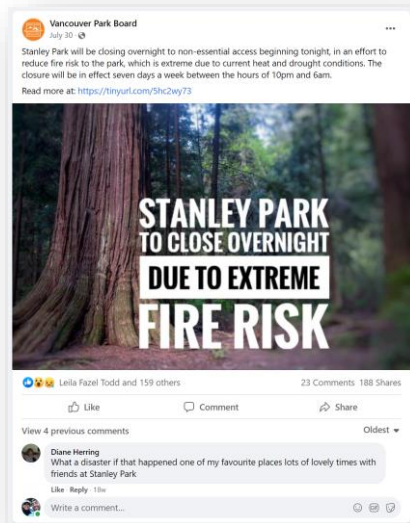


13,500 followers
(+up 2,125 from 2020)



32,300 followers

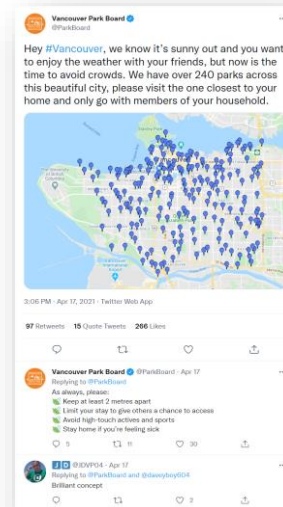
TOP POST OF 2021:



TOP POST OF 2021:



TOP POST OF 2021:



Communications by the Numbers

DEPARTMENTS: Communications



WELCOME
EVERYONE



473

media inquiries
resulting in

2,235

media mentions



OMNI
TELEVISION



**VANCOUVER
IS AWESOME**

Foundational
Task

Taking Engagement to New Heights – SYC Hub

DEPARTMENTS: Park Planning & Development, Recreation & Communications



WELCOME
EVERYONE



Vancouver Board of Parks and Recreation

Follow and participate in Park Board engagement opportunities to help shape projects, policies, and initiatives for parks and recreation to benefit all people, communities, and the environment.

Learn about the [Park Board](#) and [VanPlay](#), the guiding strategy for all Park Board projects.

Featured projects



**Burrard View
Community Garden**



**John Hendry (Trout
Lake) Park Renewal Plan**



**Kitsilano Beach Park
Seaside Greenway
Improvements**

Taking Engagement to New Heights

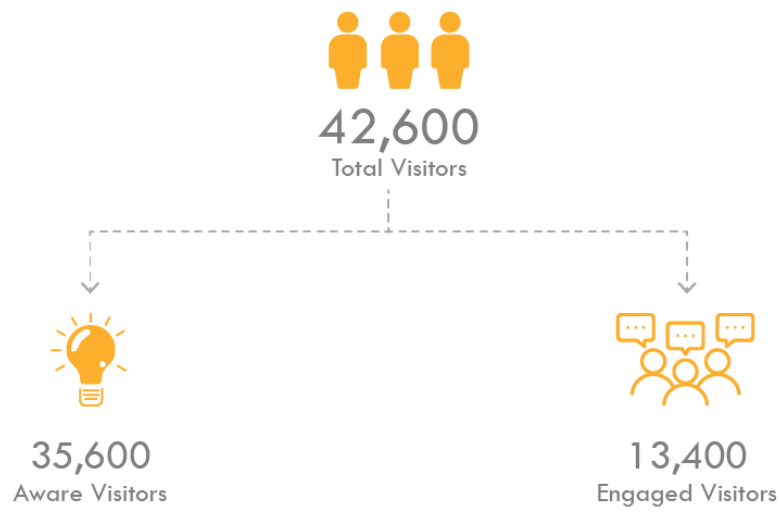
DEPARTMENTS: Planning & Park Development, Communications



21

Projects currently on
Shape Your City

G.5
Community
Engagement



Sunset Beach Pop-Up Plaza

DEPARTMENTS: Park Planning & Development & Commercial Operations



WELCOME
EVERYONE



P.5
Diversity



Brewers Park Opening

DEPARTMENTS: Park Planning & Development



WELCOME
EVERYONE



P.1 Safe, Clean
& Accessible
R.1 Capacity,
Quality & Diversity

Adaptive Program Expansions

DEPARTMENTS: Recreation



WELCOME
EVERYONE



Adaptive Swim Program

R.2 Sport
for Life



Sailor Vaughan & Jarrett Vaughan, sledge hockey

ABC Program Growth and Award

DEPARTMENTS: Recreation



WELCOME
EVERYONE



R.2 Sport for Life



"The camaraderie and fun that we have also keeps me coming back. I have never experienced this in any other fitness program that I have attempted in the past 25 years" - ABC Program Participant

Outdoor and Indoor Pools at Near Capacity Utilization

DEPARTMENTS: Recreation



WELCOME
EVERYONE



R.1 Capacity,
Quality
& Diversity

Expanded Outdoor Field Access for Permit Groups

DEPARTMENTS: Recreation



WELCOME
EVERYONE



F.1 Expand
Access

Fitness Centres Become More Accessible

DEPARTMENTS: Recreation



WELCOME
EVERYONE



F.2 Welcoming
Spaces

Community Centre Strategy

DEPARTMENTS: Planning, Policy & Environment, Recreation



WELCOME
EVERYONE



West Point Grey Intergenerational Dance

F.1 Expand
Access



COMMUNITY CENTRE STRATEGY

SHARE YOUR
EXPERIENCE
WITH US!



PLEASE COMPLETE SURVEY ONLINE AT
shapeyourcity.ca/ccstrategy

將提供翻譯 | 將提供翻譯 | ਅਨੁਵਾਦ ਉਪਲਬਧ ਹੋਵੇਗਾ
Ibibigay ang pagsasalin | bản dịch sẽ có sẵn

Find out more at www.vancouver.ca/ccstrategy



WELCOME EVERYONE





Parks and recreation experiences that improve quality of life



GROUNDWORK



INITIATIVES

-  Not Started/ Paused
-  Initiated
-  Underway
-  Complete

G.3 Customer Service

Provide excellent customer service by enhancing communication with the community, our partners and stakeholders



G.5 Community Engagement

Conduct meaningful, wide reaching and effective community engagement through innovative opportunities and methods



G.9 Stewardship

Foster an ethos of stewardship and community development which engages people, community groups and organizations in caring for and about parks and recreation



WELCOME EVERYONE

Parks and recreation experiences that improve quality of life



PARKS



P.1 Safe, Clean and Accessible

Improve the safety, cleanliness and physical accessibility of all parks to increase access for all



P.4 Responsive

Respond to challenges and future trends through proactive park design, operations and maintenance practices



P.5 Diversity

Provide a wide variety of park types, spaces and experiences that reflect the communities they serve



INITIATIVES

● Not Started/ Paused

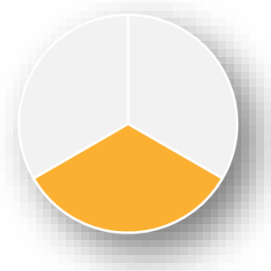
● Initiated

● Underway

● Complete

WELCOME EVERYONE


Parks and recreation experiences that improve quality of life



RECREATION



INITIATIVES

-  Not Started/ Paused
-  Initiated
-  Underway
-  Complete

R.1 Capacity, Quality & Diversity

Increase the capacity, quality and diversity of recreation amenities through strategic management and investment



R.2 Sport for Life

Support a lifelong pursuit of sport and recreation for all ages and abilities



R.3 Local Food

Support access to sustainable, local and healthy food



WELCOME EVERYONE

Parks and recreation experiences that improve quality of life



FACILITIES



F.1 Expand Access

Expand access to recreation facilities to keep up with population growth and changing needs





F.2 Welcoming Spaces

Enhance existing facilities to create welcoming spaces and amenities which appeal to a wide range of recreational interests and are accessible to all



INITIATIVES

-  Not Started/ Paused
-  Initiated
-  Underway
-  Complete

WELCOME EVERYONE

Parks and recreation experiences that improve quality of life

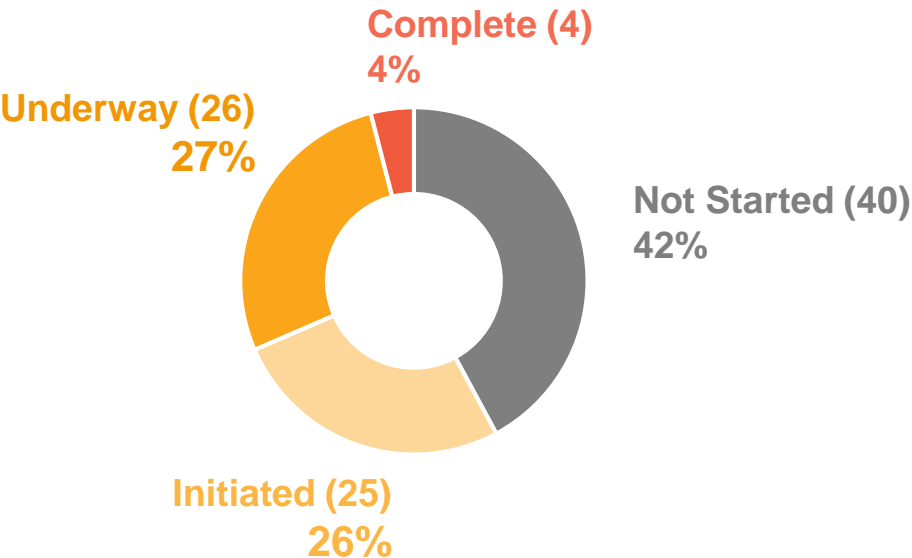


97

INITIATIVES TOTAL



Status of Initiatives



ASSET TARGET UPDATE

Parks and recreation experiences that improve quality of life



WHAT ARE ASSET TARGETS?

The Park Board has many “assets” from trails to tennis courts and ice rinks.

The targets take stock of these assets, consider their future needs and set goals for what needs to be done to provide excellent service.

All Asset Targets are being tested through various current and upcoming strategies

ASSET NEEDS

ASSET TARGET SNAPSHOT

Asset	Supply	Renewal Timeline	Distribution
Action Sports	▲	■	●
Aquatics			
Aquatics	▲	■	●
Spray Parks	▲	■	●
Community Centres	▲	■	●
Court Sports			
Ball Hockey	▲	■	●
Basketball	▲	■	●
Volleyball	▲	■	●
Lacrosse Box	■	■	■
Padel Court	■	■	■
Pickleball	▲	■	●
Roller Hockey	▲	■	●
Tennis	▲	■	●
Field Sports			
Ball Diamonds	▲	■	●
Playing Fields	▲	■	●
Fitness	▲	■	●
Golf	■	■	■
Horticulture	■	■	■
Indoor Dry-Floor Sports	▲	■	●
Local Food	▲	■	●
Natural Areas	▲	■	●
Parks	▲	■	●
Play Areas	▲	■	●
Rinks	▲	■	●
Track and Field	▲	■	●
Trails & Paths	▲	■	●
Washrooms	▲	■	●

Weave the City Together



Collaborating on the Greenways Refresh

DEPARTMENTS: Planning & Park Development



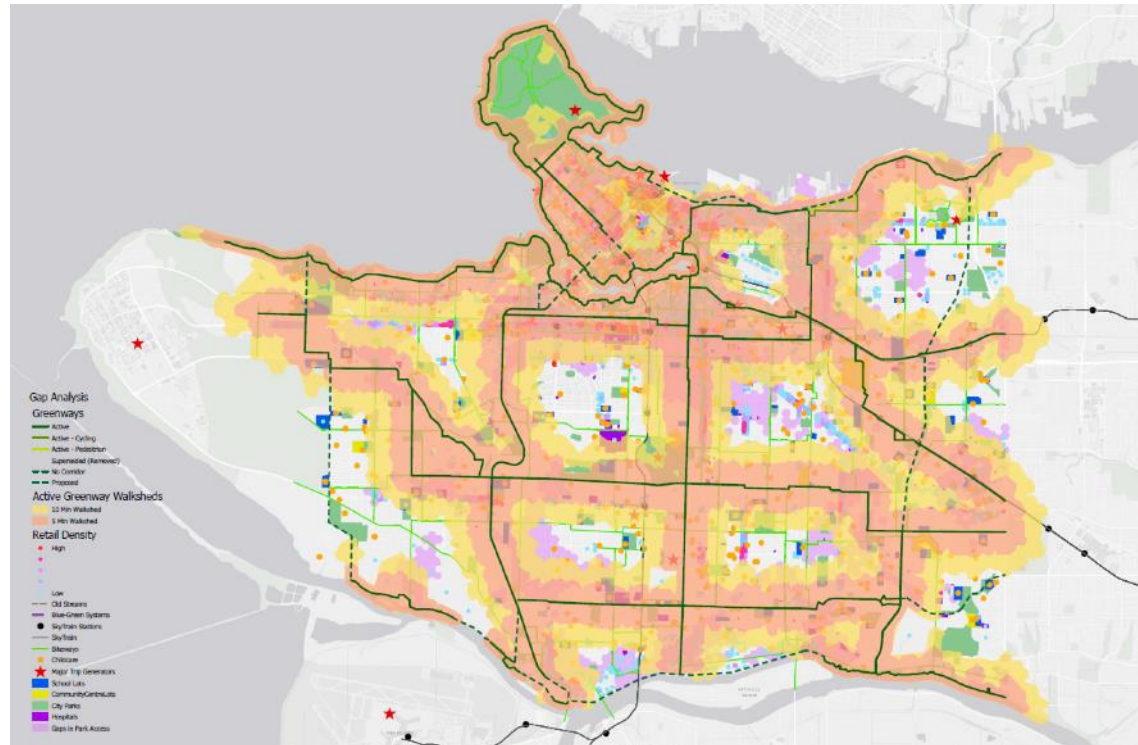
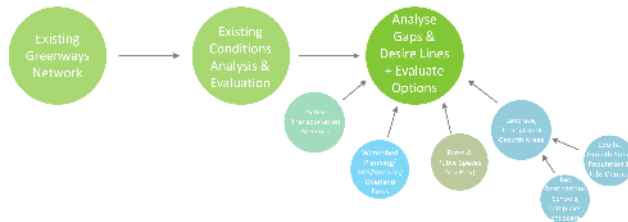
WEAVE THE CITY
TOGETHER



P.2 CONNECTIONS & NETWORK

Collaborate on review of
Greenways Plan

Identify Future Greenways Network (30 years+)



Towards a Vision for a Connected System

DEPARTMENTS: Planning & Park Development



WEAVE THE CITY
TOGETHER



LITTLE MOUNTAIN TO BIG RIVER CONCEPT



Alberta St Blue Green System and Columbia Park Renewal



We want to hear your ideas for a proposed blue green system along Alberta St and West 43rd Ave, as well as for the renewal of Columbia Park.

The Cambie Corridor is growing and so are the demands on its drainage and sewer systems, parks, streets, and public spaces.

To provide critical servicing for the neighbourhood, the Alberta St Blue Green System and Columbia Park Renewal Project will explore innovative ways to enable growth while responding to the impact of climate change on our sewer and drainage systems.

A blue green system is an engineered solution that uses soil. [Continue reading](#)



SURVEY

UPDATES

QUESTIONS

MAP

P.2 CONNECTIONS & NETWORK

Alberta Street Blue Green Systems & Columbia Park Master Plan

Renewing the Urban Forest Strategy

DEPARTMENTS: Park Operations, Planning & Park Development



WEAVE THE CITY
TOGETHER



N.3 ECOLOGICAL NETWORK

Update Urban
Forest Strategy

Expanding the Park System with Burrard Slopes

DEPARTMENTS: Planning & Park Development, Strategic Operations

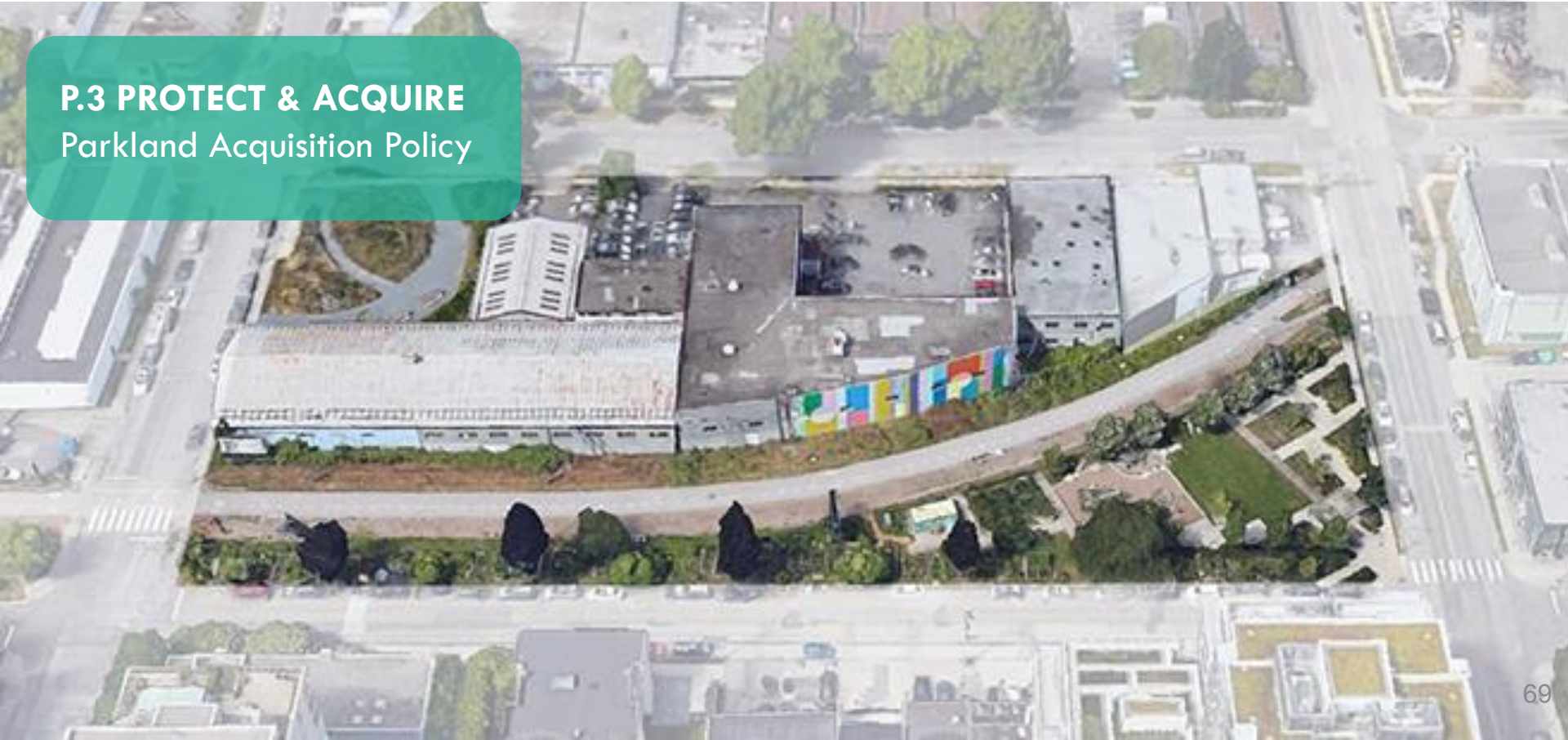


WEAVE THE CITY
TOGETHER



P.3 PROTECT & ACQUIRE

Parkland Acquisition Policy



Expansion of Naturally Managed Areas in Parks

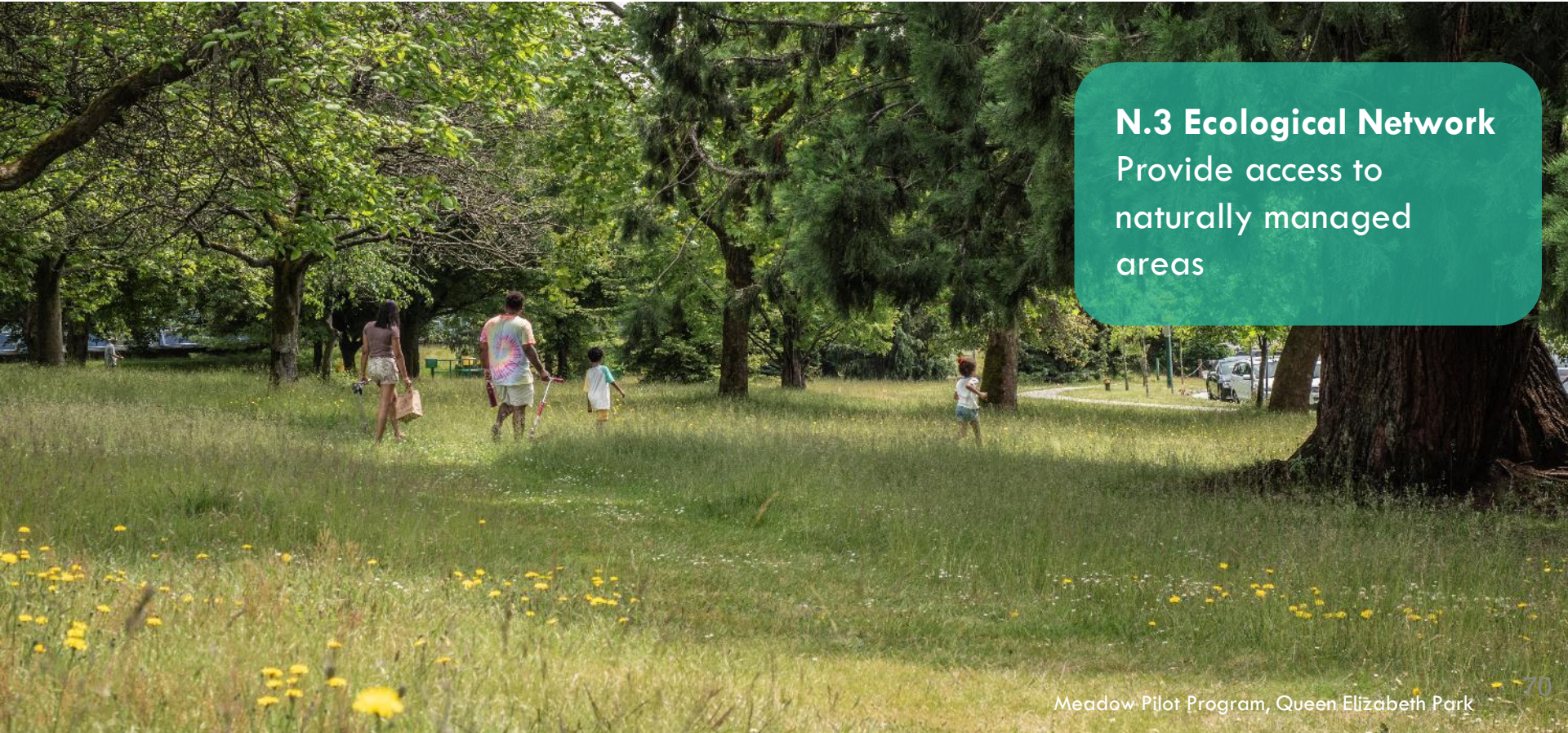
DEPARTMENTS: Park Operations, Park Planning & Development, & Communications



WEAVE THE CITY
TOGETHER



N.3 Ecological Network
Provide access to
naturally managed
areas



Oakridge Centre Artists in Residence

DEPARTMENTS: Decolonization, Arts & Culture, Planning and Park Development, Strategic Operations, Recreation



WEAVE THE CITY
TOGETHER



G.8 ARTS & CULTURE

Funding mechanisms to
support community arts
and Artists in Residence



Pulling Together Through Art

DEPARTMENTS: Decolonization, Arts & Culture, Recreation



WEAVE THE CITY
TOGETHER



G.8 Arts & Culture

Create opportunities
to support art in
everyday life

R.2 Sport for Life



Todd DeVries leading online weaving with Elders at Britannia ⁷²

Enabling Vital Community Connection

DEPARTMENTS: Decolonization, Arts & Culture



WEAVE THE CITY
TOGETHER



Walk by Movie Nights

G.8 Arts & Culture

Support diverse cultural visibility through arts, culture and storytelling



Print Making In the Park

WEAVE THE CITY TOGETHER

Parks, nature, recreation and culture integrated into everyday life



GROUNDWORK



G.4 Complete Communities

Advocate for the protection and enhancement of parks, recreation, and nature throughout the city as an elemental part of complete communities



G.8 Arts & Culture

Support diverse cultural visibility through arts, culture and storytelling

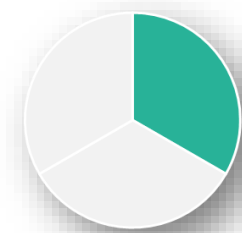


INITIATIVES

- Not Started/ Paused
- Initiated
- Underway
- Complete

WEAVE THE CITY TOGETHER

Parks, nature, recreation and culture integrated into everyday life



PARKS



P.2 Connections & Network

Enhance nodes and multi-modal connections to create a citywide network of parks and recreation



P.3 Protect & Acquire

Protect and acquire park land to provide access to space for sport, recreation, culture and nature throughout the city



INITIATIVES

- Not Started/ Paused
- Initiated
- Underway
- Complete

WEAVE THE CITY TOGETHER

Parks, nature, recreation and culture integrated into everyday life



NATURE



N.1 Shoreline & Waterway Integrity

Protect and enhance the integrity of foreshores, waterways and beaches



N.2 Freshwater Resources

Protect Vancouver's freshwater resources through ecological restoration, green infrastructure, and water conservation



N.3 Ecological Network

Nurture, protect, and connect the city's ecological network and natural areas

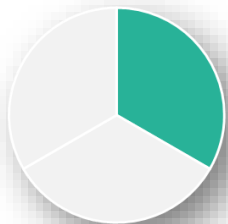


INITIATIVES

- Not Started/ Paused
- Initiated
- Underway
- Complete

WEAVE THE CITY TOGETHER

Parks, nature, recreation and culture integrated into everyday life



NATURE



N.4 Connection to Nature

Cultivate connection to nature through education, programming and stewardship







N.5 Urban Forest

Grow and improve the health of Vancouver's urban forest



INITIATIVES

-  Not Started/ Paused
-  Initiated
-  Underway
-  Complete

WEAVE THE CITY TOGETHER

Parks, nature, recreation and culture integrated into everyday life



54

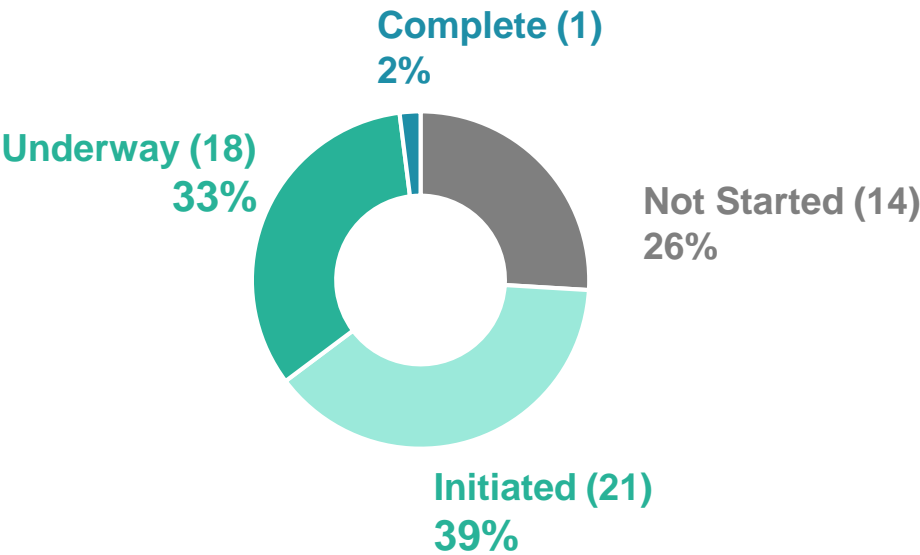
INITIATIVES TOTAL



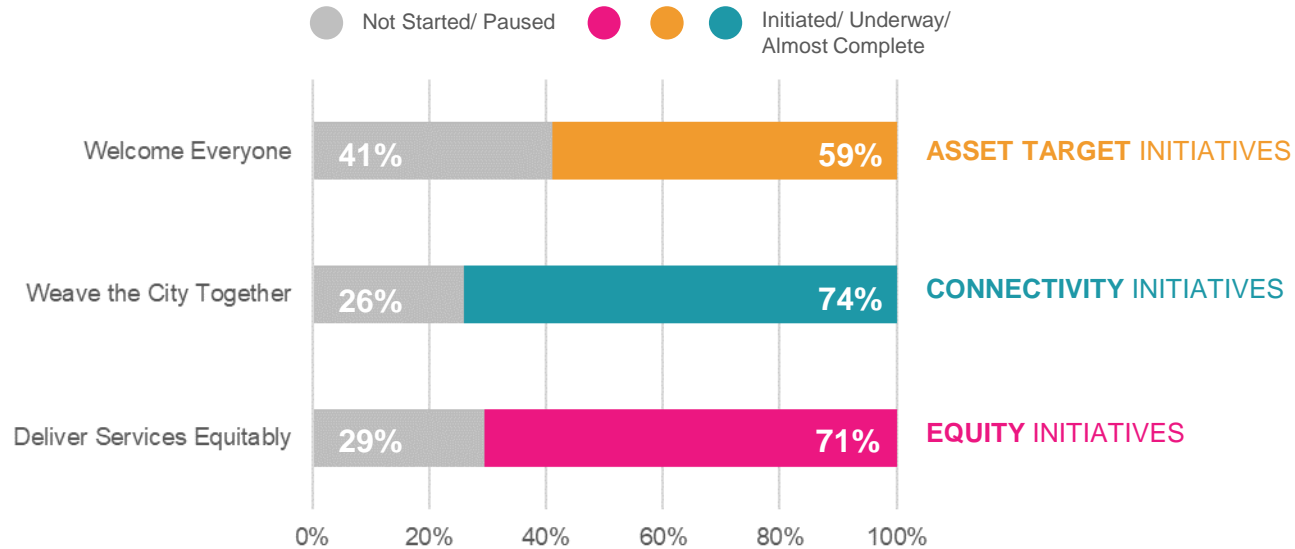
INITIATIVES

- Not Started/ Paused
- Initiated
- Underway
- Complete

Status of Initiatives



SUMMARY





LOOKING FORWARD & NEXT STEPS

CHALLENGES AHEAD

1

Pandemic continues to impact service delivery to the community



2

Volume and complexity of work continues to increase along with backlog of work from COVID



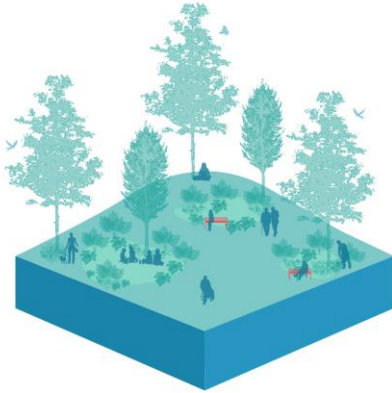
3

Limited funding and resources have not kept pace with growing demands



CHALLENGES AHEAD

Understanding the relationship between
Park Provision, Carrying Capacity & Level of Service



VanPlay Target
1.1 ha per 1000 people



0.50 ha per 1000 people
(similar to downtown)



0.30 ha per 1000 people

OPPORTUNITIES AHEAD

1

Implement learnings from the pandemic



2

Provide critical access to nature, sport and recreation



3

Use current and upcoming strategies as tools for effective implementation



NEXT STEPS

- Enabling VanPlay Implementation and Alignment with the service plan and capital plan across the Park Board
- Update on Asset Targets with the completion of various strategies in 2022 and report back to the Board next summer





Van Play

Imagine
parks+recreation

