



JOHN HENDRY (TROUT LAKE) Park Renewal Plan

Park Board Committee Meeting
Monday May 16, 2022

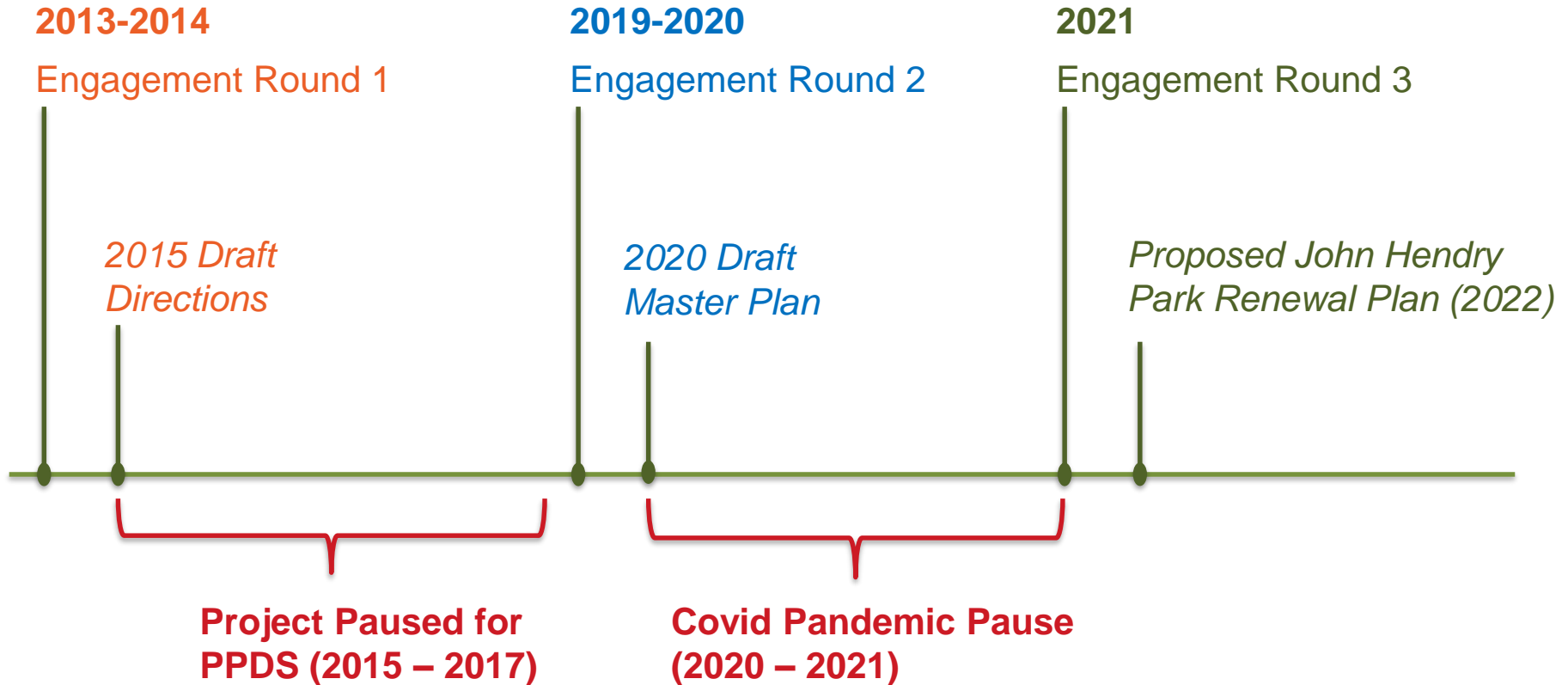


- To provide an overview of the John Hendry Park Renewal Plan and the planning process used to develop it
- Seek a decision by the Board whether or not to approve the Proposed John Hendry Park Renewal Plan

- Project background
- Park context
- Planning and engagement: 2013 - 2022
- Overview of the Proposed John Hendry Park Renewal Plan
- Discussion

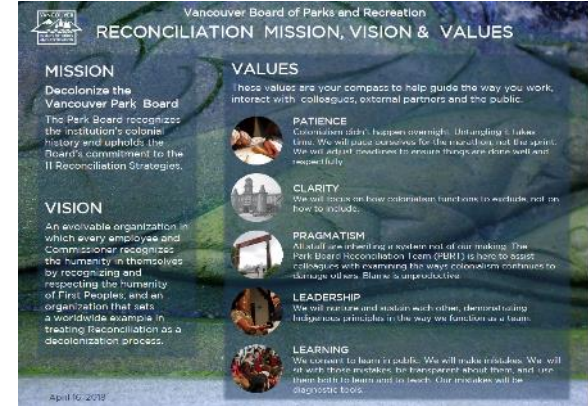
-  **1** Advance Reconciliation & Decolonization
-  **2** Support Healthy & Sustainable Water Systems
-  **3** Enhance Natural Spaces & Biodiversity
-  **4** Support Safety, Accessibility, & Inclusivity and Create a Park for All
-  **5** Provide Diverse Recreational Options
-  **6** Improve Park Connectivity
-  **7** Reinvest in Priorities

Background - Timeline



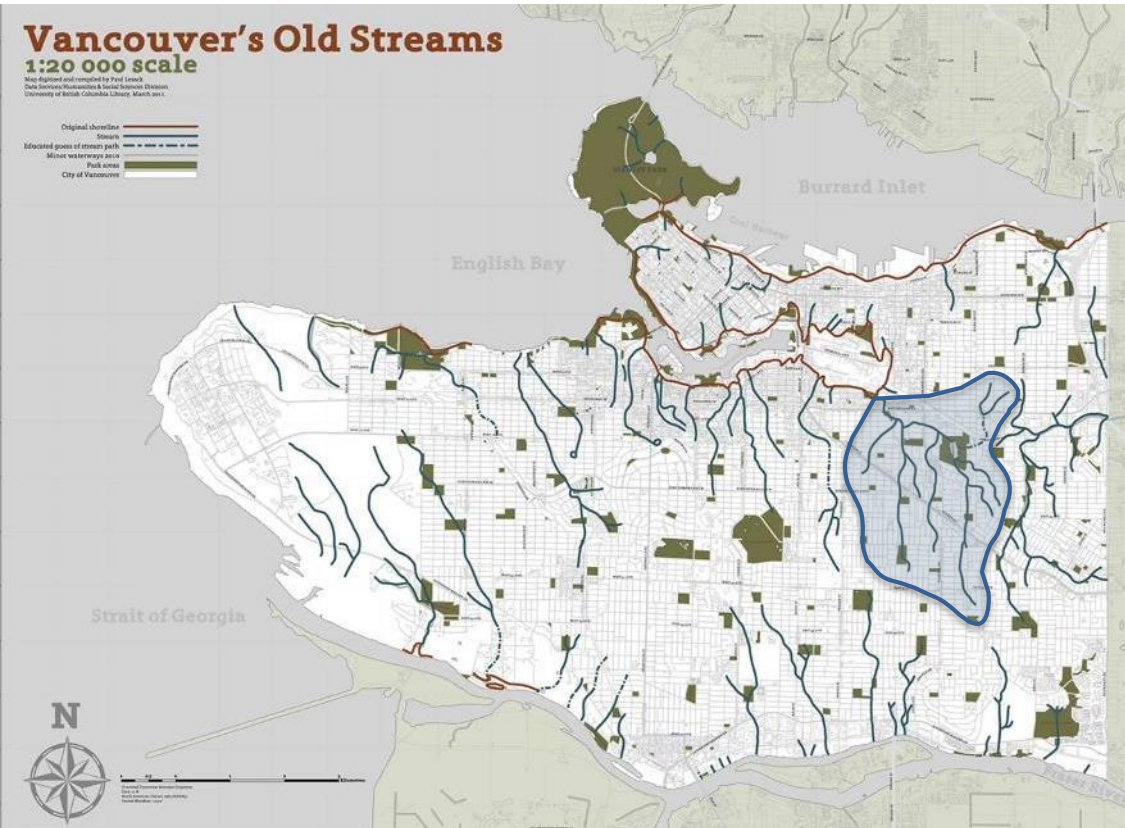
Key initiatives and events since project started in 2013

- COVID Pandemic (2020 – 2022)
- Heat Dome (2021)
- Reconciliation and Decolonization (2016 – ongoing)
- VanPlay (2019/2020)
- Climate Emergency Action Plan (2021)
- Local Food System Action Plan (2021)
- Rain City Strategy (2019)



Park Context





- Trout Lake part of a 550-600ha 'China Creek' catchment that drained to False Creek
- Important site for First Nation cultural practices/food gathering
- Shallow lake (< 3m deep)
- Primarily 'bog' conditions with 4-6m layer of underlying peat
- Home to old growth forests, bears, wolves, beavers, salmon, trout, eagles, hawks, herons, songbirds, amphibians....

Early Colonial Development Timeline



Hastings Mill 1880c



Trout Lake 1890c



East Vancouver 1940c

- 1880c - diversion of water from Trout Lake to Hastings Mill
- 1890c - Trout Lake a popular recreation
- 1900c - Farming/development near lake
- 1920c - South Beach area created including raft and dressing rooms. Park Board begins acquiring land nearby
- 1926 - Aldyen Hamber donates land to Park Board with condition it be named after her father John Hendry Park
- 1926 - John Hendry Park created



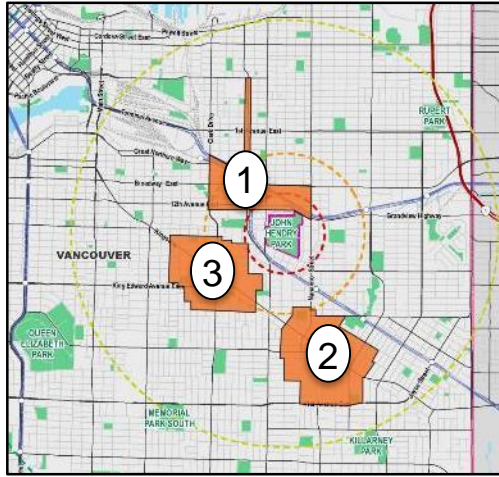
- 1950c - China Creek culverted
- 1953 - Trout Lake Little League
- 1963 - Grandview Community Centre constructed
- 1968 - Trout Lake closed due to pollution/high bacteria levels
- 1969 - Drinking water added to Trout Lake for the first time
- 1992 - Vancouver Coastal Health begins seasonal testing of Trout Lake water quality

John Hendry Park - aerial looking west 1971c

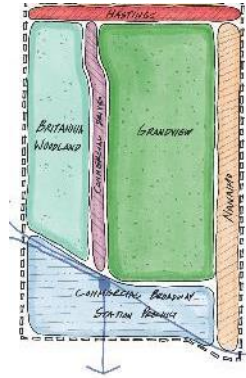
John Hendry Park: 1971 vs 2022



Increasing densification nearby = Increasing park use

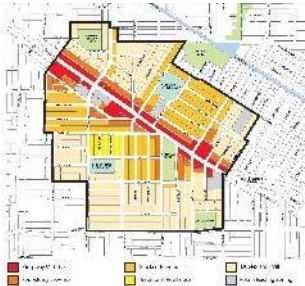


1. Grandview-Woodland

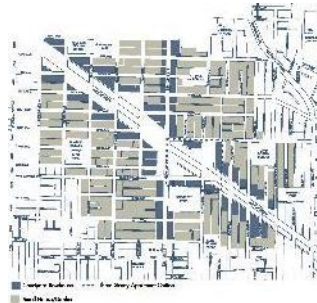


Safeway Site -
Commercial Drive
and East Broadway

2. Norquay Village



3. Kingsway and Knight



Planning Process





John Hendry Park – Public Ideas Event 2013

- 3 Phases of engagement
- **2500+ people participated** and provided feedback
- Master Plan was scheduled to be finished by 2015

Stakeholders

- Trout Lake Community Centre Board
- Trout Lake Community Centre Youth Group
- Trout Lake Community Centre Seniors' Group
- Vancouver Field Sports Federation (VFSS)
- Local Sports Groups
- Local Environmental Groups
- Community and Family Services Representatives
- Active Transportation Representatives
- Special Events Representatives
- Off-Leash Dog Representatives

Opportunities

- Improve water quality in Trout Lake
- Restore natural flow of water into lake
- Restore the bog
- Maintain/enhance natural habitat and green space
- Boardwalks in wet areas
- Infrastructure upgrades
- Washroom upgrades
- Permanent facility for the Farmers Market
- Diversity of programming
- Expand swimming area

Challenges

- Poor water quality in the lake
- Reduce the amount of potable water pumped into the lake
- Control invasive species
- Poorly drained areas
- Pathways narrow and often flooded
- Accessibility
- Safety and dark areas at night
- Conflicts between cyclists and pedestrians
- Conflicts with dogs throughout park
- Restrict dogs off leash to designated area



Stormwater and Water Quality

- Direct internal park run-off to Trout Lake
- Integrate neighbourhood stormwater daylighting and management
- Develop a water quality treatment program for Trout Lake

Natural Areas

- Improve existing natural habitat
- Create new natural areas
- Look to restore portion Trout Lake bog
- Develop a tree inventory

Features and Amenities

- Replace South Beach concession and washroom building
- Enclose/add amenities for dog OLA
- Relocate Farmers Market
- Improve services for events
- Develop additional picnic shelters
- Redevelop South Beach playground
- Washroom in north of the park
- Add park amenities

Circulation

- Relocate existing and develop active transportation connections
- Redevelop multi-use lake loop trail
- Upgrade secondary trails within the Park
- Install boardwalks and lake lookouts
- Provide additional bicycle facilities
- Improve wayfinding, signage, amenities

Playing Fields

- Retain and complete minor improvements for the all-weather field
- Maintain existing fields and identify potential to relocate some user groups



- Revisit park improvement recommendations (2015)
- Topics for additional input
 - Circulation
 - South Beach Area
 - Off-leash area
 - Farmers Market and community gardens
 - Sports Fields and hard courts
- **1700+ people participated** and provided feedback

Open House
Oct 5, 2019



250
participants

Online Survey
Oct 4 - Oct 30, 2019



1150+
responses

Workshop
Nov 19, 2019



50
participants

DEEP DIVE SESSIONS

Off-Leash Area
Nov 26, 2019



30
participants

Farmers Market &
Community Gardens
Nov 28, 2019



15
participants

Fields
Nov 28, 2019



11
participants

Trout Lake Community Centre

- Trout Lake Community Centre Association
- Trout Lake Community Centre patrons
- Trout Lake Community Centre staff

Farmers Market and Community Garden

- Vancouver Farmers Market
- Cedar Cottage Community Garden

Active Transportation

- Hub Cycling

Environment

- Environmental Youth Alliance
- Wildcoast
- Echo Ecological
- Bog Group

Culture/Event Groups

- National Indigenous Peoples Day
- Mother's Day Traditional Pow Wow
- Vines Art Festival
- Britannia CC Seniors, Elders and Advocates
- Bike the Blossoms
- Gutsy Walk
- Vancouver Pagan Pride
- Lantern Procession

Sports Groups

- Trout Lake Little League
- Scribes Football
- Vancouver Athletic Football Club
- Vancouver Field Sports Federation
- Youth Soccer
- Vancouver Ultimate League
- TLCC Basketball

1. Circulation

- Reduce conflicts between different park users
- Improve connections and accessibility

2. South Beach Area

- Upgrade concession/washroom building
- Upgrade playground
- Add volleyball court(s), seating, gathering areas.

3. Deep Dive: Dog Off-leash Area

- Maintain current size and define boundaries
- Reduce conflicts

4. Deep Dive: Farmers Market/Community Gardens

- Explore different locations for Farmers Market that maintain/ expand current space, provide better infrastructure, is close to washrooms, minimizes impact on the neighbourhood.
- Consider adding a community garden into the park. However, if added ensure it is inclusive and not restrictive in terms of who can enter.

5. Deep Dive: Sports fields, courts and playgrounds

- Improve the playability of the main sports fields and re-purpose marginal fields.
- Provide more hard court options.



- Park pop-up, community partner meetings and online survey.
- **550+ people participated** and provided feedback

- 2020 – Proposed ‘Master Plan’ prepared based on feedback from 2019 engagement
- Final round of engagement on proposed ‘Master Plan’ delayed due to COVID
- 2021 – ‘Renewal Plan’ engagement included:
 - 31 park improvement recommendations, most had been identified in 2015, supported in 2019.
 - 9 topics that remained unresolved since 2019
 - Introduction of the Cultural Focus Area as an instrumental part of the Renewal Plan
 - Discuss other recent initiatives and events that had surfaced since 2019 and influenced the Renewal Plan

Trout Lake Community Centre

- Trout Lake Community Centre Association
- Trout Lake Community Centre patrons
- Trout Lake Community Centre staff

Farmers Market and Community Garden

- Vancouver Farmers Market
- Cedar Cottage Community Garden

Active Transportation

- Hub Cycling

Environment

- Environmental Youth Alliance
- Wildcoast
- Echo Ecological
- Bog Group

Culture/Event Groups

- National Indigenous Peoples Day
- Mother's Day Traditional Pow Wow
- Vines Art Festival
- Britannia CC Seniors, Elders and Advocates
- Bike the Blossoms
- Gutsy Walk
- Vancouver Pagan Pride
- Lantern Procession

Sports Groups

- Trout Lake Little League
- Scribes Football
- Vancouver Athletic Football Club
- Vancouver Field Sports Federation
- Youth Soccer
- Vancouver Ultimate League
- TLCC Basketball

2021 Engagement - Overall Concept Plan



Cultural Focus Area - Indigenous Reconciliation

1 CULTURAL FOCUS AREA new

- establish a plan to support the City, Board's Reconciliation Mission, Vision, and Values
- conceptualize and design the area with local First Nations and Urban Indigenous residents to build Indigenous focus on interests and foster positive relationships that offer benefit to all residents

2 INDIGENOUS CELEBRATION FACILITY

- consider a covered event structure through the Cultural Focus Area design process

Water - Blue Layer

3 ADAPTIVE TROUT LAKE WATER QUALITY TREATMENT & MONITORING updated

- conduct ongoing water monitoring to track water quality fluctuations
- install water quality measurements including sensors, automated pumping of the swimming area to focus water treatment (e.g., water curtain or barrier), and filtration when needed
- work towards a goal of addressing the quality of filtering water into the lake while maintaining a recreational area

4 RAINWATER CHANNEL FOR NEIGHBOURHOOD RUNOFF

- construct and naturalize a water channel for treating neighbourhood runoff in the park
- restore the flow of rainwater to treat it close to help improve water quality and restore lake ecosystems

5 CAPTURE AND TREAT PARK RUNOFF

- direct overland runoff into the dark, biosand Trout Lake for natural filtration before run to City storm sewers
- add rain gardens and over-site parking at parking and focus to slow and infiltrate rainwater in a more scenic collage

Natural Spaces - Green Layer

6 NORTHEAST WOODLAND

- naturalize a woodland area to add biodiversity and a quiet and visual buffer to South Entrance way

7 NATURAL LAKE EDGES

- protect the east and west shorelines of Trout Lake as natural areas for wildlife and limit public access to these areas
- restore vegetation to include removal of invasive species and ongoing maintenance

8 TREE INVENTORY AND RENEWAL

- assess the condition of all existing trees
- add new trees to establish a mix of size and regional, to frame views, and to increase biodiversity

9 POLLINATOR PLANTING

- introduce plants that attract butterflies, bees, and birds throughout the park
- use local and native plant species
- collaborate on stewardship of these areas

Open Spaces - Relax Layer

10 DEDICATED FLEXIBLE OPEN SPACE new

11 PICNIC SHELTERS

- add picnic shelters near the south beach area (both location and informal)

12 LAKE LOOKOUTS

- reorganize the existing northeast pier
- remove the older northeast pier
- add two new piers on the east and west shorelines for Sun Impact, Sun View
- integrate seating and low level lighting

13 SEATING, DRINKING WATER, AMENITIES updated

- add seating and drinking water throughout the park
- increase options for seating in sun and shade, lounge areas, and playful seating

Activity Spaces - Play Layer

14 DOGS OFF-LEASH AREA updated

- keep size similar to existing (2.8 ha)
- improve signage and amenities
- multi-functional use by secure fencing over the Fences, Fences & Dog Shelter
- multi-level dog access points in areas with lower amenity for comfort
- add dog access points in the areas closest to outdoor fields spaces

15 SOFTBALL FIELDS updated

- Northwest Field: re-orient and relocate to Softball Canada (SC) standards and maintain areas used for multi-use
- Southwest Field: remove due to poor drainage and tree impacts required to convert to SC standards planning for this area as part of the Cultural Focus Area

16 NEIGHBOURHOOD FIELDS

- multi-use with updates to staffing, gates, and amenities fully contained through the City-wide Sport Field Strategy (currently underway)

17 LITTLE LEAGUE FIELDS

- split the northern and middle fields into two separate fields to be supported recreation of the BC Parkway Trail (see #26)
- all the same time, complete upgrades including improved drainage, backstop, spectator seating, and perimeter fencing

18 NORTHEAST PLAYING FIELD

- maintain with upgrades including drainage improvement and lighting (based on an assessment of subsurface conditions)
- add spectator seating

19 SOUTH BEACH ACTIVITY AREA

- update the beach building, including:
 - improved washroom / change room
 - removal of the concrete
 - new multi-purpose activity space
 - phase space for mobile vending
 - a new seating deck with tables and chairs overlooking the beach
- enhance the beach area with additional sand, shade trees, and contribute to the beach volleyball court permit (to be an accessible beach and table access)
- create a new shoreline playground for all ages with potential interactive water play
- integrate vegetation and seating throughout the area

20 SOUTH BEACH EVENT AREA updated

- add a large open space to the west of the south beach area
- reorganize the south parking lot with permeable paving that could support use of this space during larger events
- design the area to host a wide range of activities including formal celebrations (e.g., National Indigenous Peoples Day, World Environment Day, Vancouver Day, etc.)

21 FARMERS MARKET RELOCATION updated

- plan to relocate the market to the South Beach Event Area (see #20) to:
 - increase connectivity to amenities like washrooms, playgrounds, and picnic areas
 - support water and power access
 - provide secure parking and mitigation of potential noise impacts in the vicinity
 - retain the north parking lot as a back-up location should the primary market on issue be relocated that could be overcome

22 ACTIVITY CENTRE updated

- reconfigure and update the courts area to include consideration for:
 - 3 full tennis courts
 - 2 basketball courts
 - 2 multi-sport courts
 - addition of seating
 - integrate seating with wifi and power

23 VICTORIA DRIVE COMMUNITY PLAZA new

- allocate this open area to include amenities such as:
 - covered spaces for TLUO programming and formal use
 - an art or exercise space
 - games and lounge area, wifi, and power
 - improved grass, stone, elements
 - a potential leather ball area

24 COMMUNITY CENTRE PLAYGROUND

- maintain the existing playground with addition of seating and bicycle parking

Circulation - Move Layer

25 BICYCLE CIRCULATION updated

- **25A** relocate the BC Parkway Trail to the east park edge to improve separation from residential traffic and connect to bike routes on E 13th Ave and E 15th Ave
- **25B** upgrade a multi-use path through the park to connect from the BC Parkway to the downtown area and the E 15th Ave bike route
- add bike parking / repair at key locations

27 PRIMARY PARK TRAILS

- improve signage and drainage for accessibility throughout the park
- upgrade a lake loop with options to go through or around the dog off-leash area
- add connections to way-stair destinations

28 SECONDARY PARK TRAILS

- thoughtful link - specific location not shown on map
- update the network to link destinations
- improve signage and add boardwalk in necessary wet areas

29 PARKING

- retain the four existing parking lots
- make minor adjustments to the community centre lot to increase pedestrian circulation
- adjust the south lot for vehicle event use (see #20)

30 WAYFINDING

- add location nodes with seating, signage, and art or play points in the network
- use clear, attractive, and consistent route and regulatory signs throughout

31 PARK LIGHTING

- update park - specific locations not shown on map
- consider seating lighting to key nodes (e.g., National Indigenous Peoples Day, World Environment Day, Vancouver Day, etc.)

- 31 park improvement recommendations, .
- 10 topics that either remained unresolved since 2019 or were new since 2019
- Cultural Focus Area as an instrumental part of the Renewal Plan



Cultural Focus Area

Specific public feedback was not requested on this draft recommendation.



Adaptive Trout Lake Water Quality Monitoring & Treatment

75%

Felt the draft recommendations would address water quality issues in Trout Lake.

75%

Felt the draft recommendations would enhance Trout Lake's recreational use.



Dedicated Flexible Open Spaces

96%

Felt it is important to include a variety of open spaces in the park.

93%

Felt the draft recommendations would meet or somewhat meet their needs.



Bicycle Circulation

88%

Felt the draft recommendations would reduce conflicts and enhance safety for park visitors.

90%

Felt the draft recommendations would meet or somewhat meet their needs.



Sports Fields

91%

Felt the draft recommendations balance the needs of sports field users with other park visitors.

89%

Felt the draft recommendations would meet or somewhat meet their needs.



Dog Off-Leash Area

83%

Felt the draft recommendations would balance the needs of the dog off-leash area with other park uses.

85%

Felt the draft recommendations would meet or somewhat meet their needs.



South Beach Event Area

94%

Felt the draft recommendations would meet or somewhat meet their needs.



Farmers Market Relocation

92%

Felt the draft recommendations would meet or somewhat meet their needs.



Courts Activity Centre

94%

Felt the draft recommendations would enhance the ability for people to enjoy court sports in the park.



Victoria Drive Community Plaza

84%

Felt the draft recommendations would meet or somewhat meet their needs.

Overview of Renewal Plan Recommendations





Cultural Focus Area – Indigenous Reconciliation

Water – Blue Layer

Natural Spaces – Green Layer

Open Spaces – Relax Layer

Activity Spaces – Play Layer

Circulation – Move Layer

Concept Plan



RECOMMENDATIONS LIST (see menu page for descriptions)

- | | |
|-----------------------------------|-----------------------------------|
| 1 Cultural Focus Area | 10 Dedicated Flexible Open Spaces |
| 2 Indigenous Celebration Facility | 11 Picnic Shelters |
| 3 Adaptive Trout Lake Water | 12 Lake Lookouts |

Culture Layer - Indigenous Reconciliation

- 1 CULTURAL FOCUS AREA**
 - Create a central focus area for Indigenous Reconciliation, including a walkway, water feature, and seating area.
- 4 INDIGENOUS CELEBRATION FACILITY**
 - Create a central focus area for Indigenous Reconciliation, including a walkway, water feature, and seating area.

Water - Blue Layer

- 3 ADAPTIVE TROUT LAKE WATER QUALITY TREATMENT & MONITORING**
 - Install a water quality treatment and monitoring system for the trout lake.
- 1 RAINWATER CHANNEL FOR NEIGHBOURHOOD RUN-OFF**
 - Install a rainwater channel to collect and treat runoff from the surrounding area.

Natural Spaces - Green Layer

- 5 CAPTURING & TREATING PARK RUN-OFF**
 - Install a rainwater channel to collect and treat runoff from the surrounding area.
- 6 NORTHEAST WOODLAND**
 - Preserve and enhance the existing woodland area in the northeast corner.
- 7 NATURAL LAKE EDGES**
 - Enhance the natural edges of the lake with native plants and trees.

Relax Layer - Open Spaces

- 10 DEDICATED FLEXIBLE OPEN SPACES**
 - Create flexible open spaces for various activities and events.

Activity Spaces - Play Layer

- 11 PICNIC SHELTERS**
 - Install picnic shelters for outdoor dining and social gatherings.
- 12 LAKE LOOKOUTS**
 - Install lookouts for viewing the lake and surrounding landscape.
- 13 SEATING, DRINKING WATER, & AMENITIES (throughout park)**
 - Provide seating, drinking water, and other amenities throughout the park.
- 14 DOG OFF-LEASH AREA**
 - Create a designated area for dogs to play off-leash.
- 15 CONSOLIDATED & UPGRADED SPORTS FIELDS**
 - Consolidate and upgrade existing sports fields for better playability.
- 16 ALL-WEATHER FIELD**
 - Install an all-weather sports field for year-round use.
- 17 LITTLE LEAGUE FIELDS**
 - Install fields for Little League and other youth sports.
- 18 NORTHEAST PLAYING FIELD**
 - Install a playing field in the northeast corner.
- 19 SOUTH BEACH ACTIVITY AREA**
 - Create an activity area on the south beach.
- 20 SOUTH BEACH EVENT AREA**
 - Create an event area on the south beach for community events.

Circulation - Move Layer

- 21 FARMERS MARKET RELOCATION**
 - Relocate the farmers market to a more central location.
- 22 COURTS ACTIVITY CENTRE**
 - Create an activity centre with courts for various sports.
- 23 VICTORIA DRIVE COMMUNITY PLAZA**
 - Create a community plaza along Victoria Drive.
- 24 COMMUNITY CENTRE PLAYGROUND**
 - Create a playground for the community centre.
- 25 NORTH PUBLIC WASHROOM BUILDING**
 - Install a public washroom building in the north area.
- 26 BICYCLE CIRCULATION**
 - Enhance bicycle circulation with paths and signage.
- 27 PRIMARY PARK TRAILS**
 - Create primary trails for walking and jogging.
- 28 SECONDARY PARK TRAILS (throughout park)**
 - Create secondary trails throughout the park.
- 29 PARKING**
 - Provide parking spaces for visitors and staff.
- 30 WAYFINDING**
 - Install wayfinding signs to help visitors navigate the park.
- 31 PARK LIGHTING (key locations)**
 - Install lighting at key locations for safety and ambiance.



Recommendation

Today:

- Limited space in the City for Indigenous-led design and programming

Proposed:

- Cultural Focus Area
- Work with MST and Urban Indigenous people to reimagine this part of the park
- Potential Indigenous celebration/event facility



- Supports an Indigenous-led planning and design process
- Make visible the cultural values and programming needs of the First Nations and Urban Indigenous Peoples
- Support positive community relationships

Gathering space in southwest area of the park



Trout Lake fountain



Trout Lake

Annual input of drinking water

25,000,000 L/year (2020) = 10 Olympic swimming pools

(40,000,000 L/year - pre 2015)

Yet despite the annual contributions of drinking water, poor water quality results in closures due to E.coli.

- *2021: Closed for 77+ days (July 9 – Sept 21)*
 - *2020: Closed for 28 days (Aug 11th - Sept 7th)*
 - *2019: Closed for 10 days (July 22-31)*
 - *2018: Closed for 28 days (July 20-Aug 16)*
-
- New solutions are required
 - Focus first on ecological restoration, then determine recreational opportunities

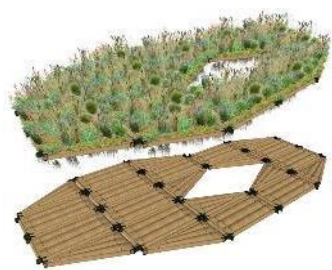


Key Recommendations

- Phased program:
 - Develop water quality monitoring program
 - Trial water quality enhancement practices including aeration, floating wetlands, potential partitioning
 - Work towards eliminating use of drinking water
 - Enhancing natural freshwater habitat
- Treat and direct rainwater into the lake
 - Work with Engineering to separate Combined Sewer Outfalls in the neighbourhood to redirect rainwater runoff into a linear wetland in the park and return some hydrologic connections



Artist renderings of floating ecosystem in Trout Lake



Floating ecosystem - structure



Floating ecosystem - example

Proposal

- 3rd party donating and installing floating ecosystem/ wetland to determine if it can enhance lake ecology
- Potentially combine with aeration to see if the wetland can improve water quality
- Include monitoring and annual reporting
- Park Board is contributing plants (\$3,000)



Key Recommendations

- Establish a native woodland in the northeast of the park
- Enhance riparian vegetation on west and east side of Trout Lake
- Renew and expand urban forest with native and climate adaptive species
- Enhance wildlife habitat by introducing pollinator friendly plantings throughout the park
- Convert naturally wetted areas to raingardens to treat rainwater and provide additional biodiversity and habitat



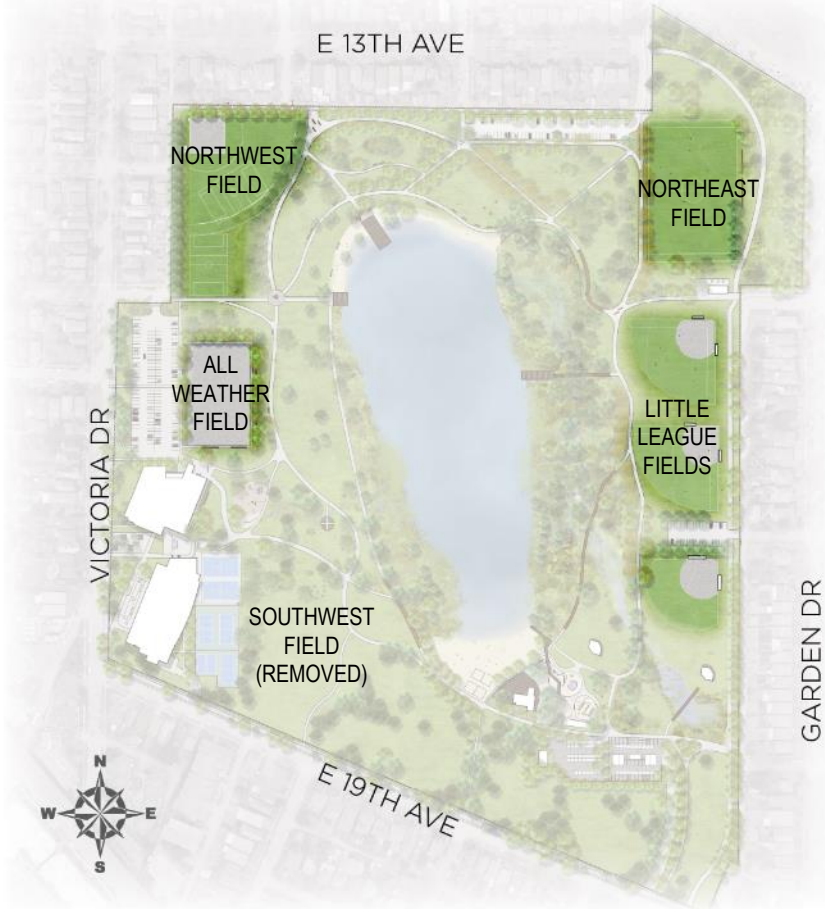
Key Recommendations

- Maintain flexible, unprogrammed spaces
- Improve the grassy areas through better drainage to be more even and usable



Key Recommendations

- BC Parkway shifted to east park edge
 - Little League Fields shifted
 - Mature trees maintained
- Low-speed compacted crushed gravel, multi-use trail that connects BC Parkway and E 14th Ave bike route and provides access to key park amenities



Key Recommendations

- Investigate subsurface soils and extent of underlying bog which are presenting playability/maintenance and challenges
- Develop a drainage and field reconstruction program for:
 - Northwest field
 - Northeast field
 - Little League fields
 - All-weather field
- Southwest field removed



Key Recommendations

- Size and location maintained
- Objectives:
 - increase safety for all park users
 - maintain a great space for dogs and people
- Apply *People, Parks & Dogs Policy*





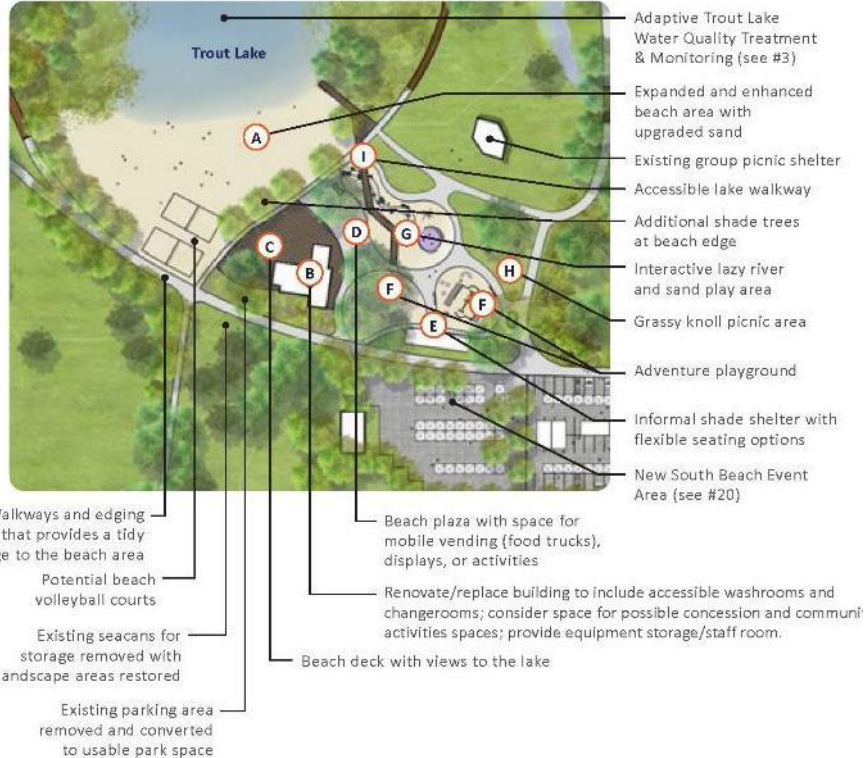
Dog Off-Leash Area

Play Layer



LEGEND

- BC Parkway Trail (cycle route)
- Primary Park Trail
- Off-Leash Area Fence
- Open Entry (no gate)
- Secure Entry (gated)
- Drinking Water / Dog Wash Station
- Potential Priority Lighting Area



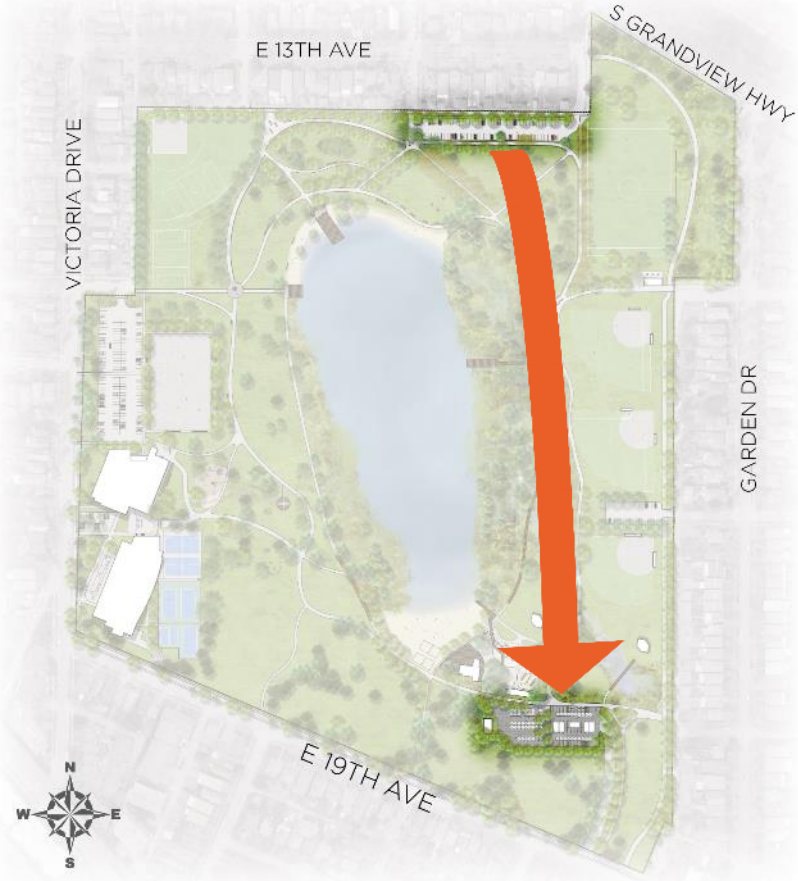
Key Recommendations

- Create a family friendly destination spot
- Enhance beach area with imported sand, shade trees, defined edges, beach volleyball
- Add accessible beach/lake access
- Update beach building with:
 - improved washrooms/change rooms, concession/mobile food vending
 - a multi-purpose activity space
 - a seating deck with tables and chairs
 - equipment storage/staff room
- Add an adventure playground
- Integrate vegetation and seating throughout



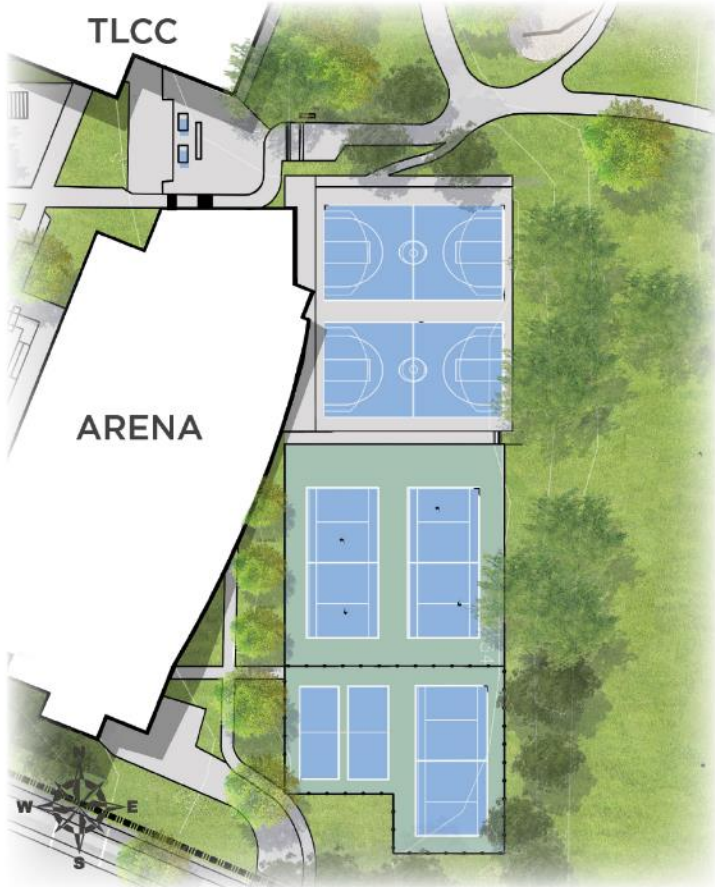
Key Recommendations

- Upgrade south parking lot with permeable paving and design it to be flexible as an event space
- Add an event space to the west of the parking lot to support the park's many events and activities
- Include infrastructure (e.g. power/water)
- Working with upgrades to South Beach Activity Area



Key Recommendations

- Relocate Trout Lake Farmers Market to the South Beach Event Area to capitalize on amenities and infrastructure in this area
- Work with Farmers Market representatives to ensure South Beach Event Area provides the logistical and infrastructural support necessary for the Market
- Work with Engineering to implement a parking plan for the area to the south of the park to minimize impact on residents

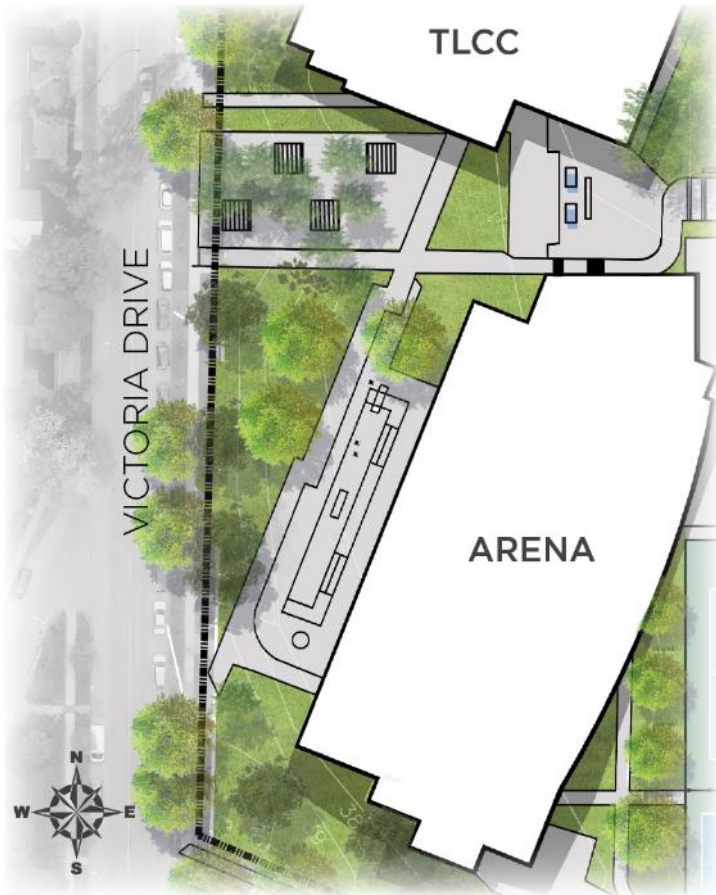


Key Recommendations

Reconfigure and update the courts area based on findings of Sport Court Strategy.

Updates could include:

- 3 full tennis courts
- 2 basketball courts
- 2 multi-sport courts
- ping-pong tables
- integrated seating with wifi and power



Key Recommendations

- Create a welcoming, multi-use community space with elements like:
 - Covered spaces for TLCC programming and informal use
 - Urban plaza with integrated parkour and skate elements
 - Enhanced seating with power, wifi and shelter
 - Art showcase space
 - Games and lounge areas
 - Grassy play space



- Restoration of Trout Lake requires the redirection of rainwater runoff from the neighbourhood to the southeast of the park.
- Involves ongoing collaboration with, and funding from, Engineering to define the runoff to be redirected into the park, and the spatial and vegetation requirements for the rainwater channel to be constructed in the park.
- The separation of sewers lines in the neighbourhood is expected to take 3 to 5 years before runoff can be redirected into the park.

Not included at this time for 3 reasons:

- 1. Cultural Focus Area** - The southeast part of the park represents a unique opportunity to decolonize John Hendry Park and envision an area that reflects indigenous values and needs. An indigenous-led process to identify future changes to this part of the park.
- 2. Local Food System Action Plan (2021)** - Update existing Park Board documents (Urban Agriculture Policy and Urban Agriculture Garden Guide) to provide direction on alternative approaches to integrating food in parks (e.g. food forests) that can be more widely integrated and are often more democratic than plot-focused community gardens
- 3. Unprogrammed Space** - The pandemic has revealed the importance of flexible open areas in parks have become since the pandemic arrived, in supporting the physical and mental wellbeing of Vancouverites. John Hendry is already programmed, maintaining flexible open spaces is considered a priority.

- The John Hendry Park Renewal Plan will take multiple Capital Plans (10+ years) and 20+ million dollars to implement the 31 Recommendations and 94 Actions
- Current funding - \$1,400,000 allows staff to undertake some quick starts
- Some elements in the renewal plan may be eligible to be funded through Development Cost Levies (DCLs) as they respond to growth in the area
- The majority of funding will need to come from funding sources eligible for renewal projects, such as community amenity contributions and debt

Timeframe	Estimated Costs (2022 dollars)
Short Term Recommendations (1-5 years)	\$5,000,000 – \$7,000,000
Medium Term Recommendations (5-10 years)	\$13,000,000 - \$15,000,000
Long Term Recommendations (10+ years)	\$1,000,000

- Develop an implementation plan that uses a set of criteria (e.g. health & safety, asset condition, feasibility) to rank actions and inform the phasing plan
- Identify phasing opportunities and synergies that reflect the Park Board's overall park renewal priorities and City of Vancouver financial capacity as determined through the upcoming and future four-year capital planning process.
- Numerous components of the Renewal Plan required detailed design investigations that will include

- A. THAT the Vancouver Park Board approve the John Hendry Park Renewal Plan, attached as Appendix A and summarized in this report; and,
- B. THAT the Vancouver Park Board direct staff to develop an Implementation Plan that identifies phasing opportunities and reflects the Park Board's overall park renewal priorities and financial capacity as determined through the upcoming four-year Capital Planning process.

- A. THAT the Vancouver Park Board approve the John Hendry Park Renewal Plan, attached as Appendix A and summarized in this report.
- B. THAT the Vancouver Park Board direct staff to develop an Implementation Plan that identifies phasing opportunities and reflects the Park Board’s overall park renewal priorities and financial capacity as determined through the upcoming four-year Capital Planning process.
- C. THAT the Park Board ask staff to explore inclusion of community garden plots in the renewal plan.
- D. THAT the Park Board direct staff to develop and implement a plan to prioritize water quality improvements to ensure safe swimming at Trout Lake with a goal to eliminate public swimming closures as a result of unsafe E.coli levels.



Questions