



## EXPLANATION

### **Parks Control By-law Amendment Regarding Liquor Consumption in Parks**

On April 24, 2023, the Vancouver Park Board approved in principle amendments to the Parks Control By-law regarding liquor consumption in Parks and glass beverage bottles. Enactment of the attached by-law will implement the Board's resolution of April 24, 2023.



**BY-LAW NO. \_\_\_\_\_**

**A By-law to Amend the Parks Control By-law  
Regarding Liquor Consumption in Parks**

THE PARK BOARD OF THE CITY OF VANCOUVER, in public meeting, enacts as follows:

1. This By-law amends the indicated provisions of the Parks Control By-law.
2. In section 14(i), the Board strikes out “break any glass bottle or container on or in any park or beach;” and substitutes “bring any glass beverage bottles or containers into any park or onto any beach;”.
3. In section 23A, the Board strikes out “Schedule 2” and substitutes “Schedules 2A, 2B and 2C”.
4. The Board strikes out section 23B and substitutes the following:

“23B. Liquor may be consumed in a park:

  - (a) in the areas designated as places where liquor may be consumed under section 23A of this by-law;
  - (b) year-round, in the areas listed in Schedule 2A, starting June 1, 2023;
  - (c) between July 1 and August 31 of each calendar year, in the areas listed in Schedule 2B;
  - (d) between June 1, 2023 and September 4, 2023, in the areas listed in Schedule 2C; and
  - (e) between the hours of 11:00am and 9:00pm,

except that if the General Manager permits a special event in an area, or part of an area, that has been designated as an area where liquor may be consumed, then the General Manager may temporarily suspend the designation of that area, or a part of that area, for the duration of the special event.”.
5. In section 23D(b), the Board strikes out “a minimum of 12 inches by 24 inches” and substitutes “a minimum of 12 inches by 18 inches”.
6. The Board strikes out Schedule 2 and substitutes Schedules 2A, 2B and 2C, all as attached to this By-law as Appendix A.
7. This By-law is to come into force and take effect on the date of its enactment.



ENACTED by the Vancouver Board of Parks and Recreation this \_\_\_\_ day of \_\_\_\_\_, 2023.

---

Scott Jensen, Chair  
Board of Parks and Recreation

---

Steve Jackson, Acting General Manager  
Board of Parks and Recreation

**SCHEDULE 2A**

**PARKS AND AREAS OF PARKS  
 WHERE LIQUOR MAY BE CONSUMED**

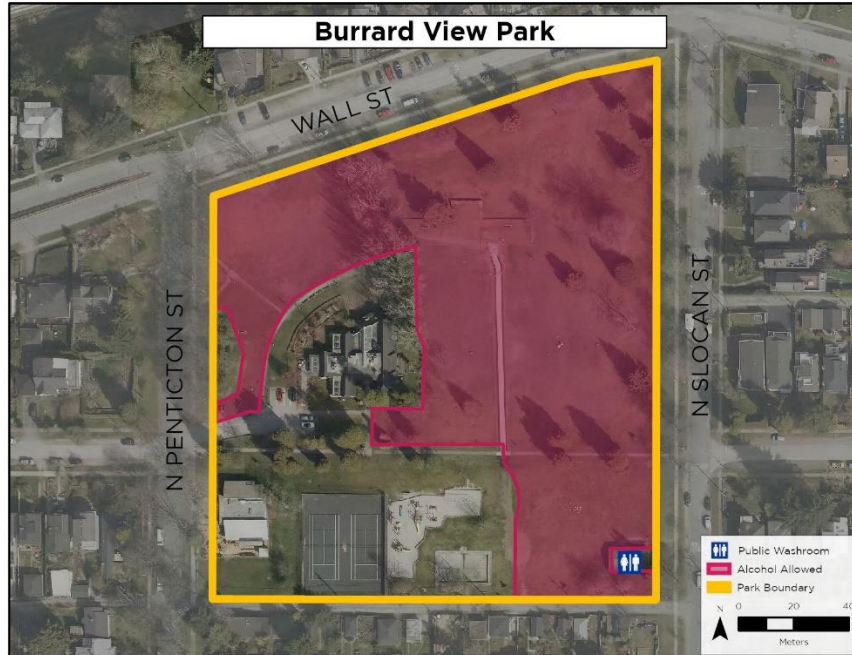


1. Adanac Park – Designated Area



2. Balcalava Park – Designated Area

SCHEDULE 2A  
PARKS AND AREAS OF PARKS  
WHERE LIQUOR MAY BE CONSUMED



3. Burrard View Park – Designated Area



SCHEDULE 2A

PARKS AND AREAS OF PARKS  
WHERE LIQUOR MAY BE CONSUMED



4. Elm Park – Designated Area



5. Fraser River Park – Designated Area

**SCHEDULE 2A**

**PARKS AND AREAS OF PARKS  
 WHERE LIQUOR MAY BE CONSUMED**



6. Garden Park – Designated Area



7. Granville Park – Designated Area



**SCHEDULE 2A**  
**PARKS AND AREAS OF PARKS  
 WHERE LIQUOR MAY BE CONSUMED**



8. Harbour Green Park – Designated Area



9. Jericho Beach Park – Designated Area

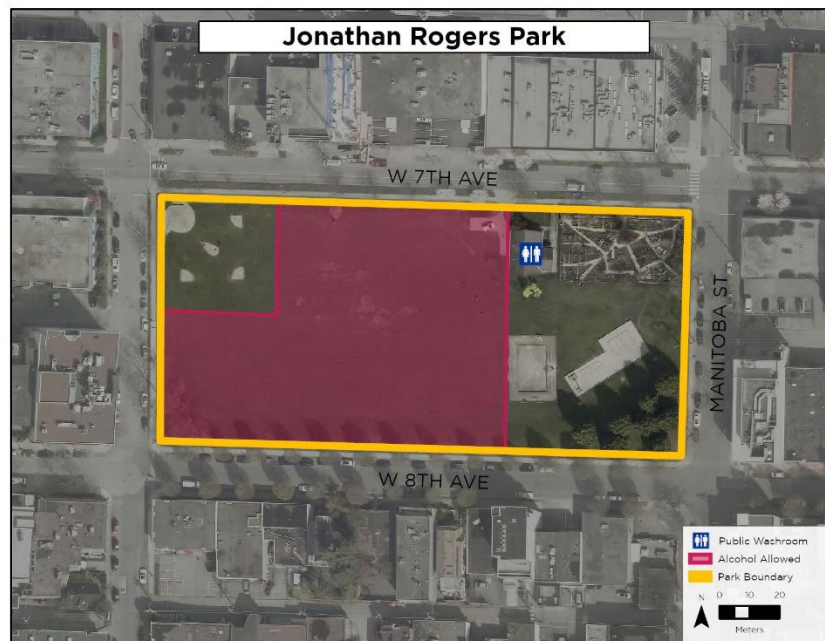


**SCHEDULE 2A**

**PARKS AND AREAS OF PARKS  
 WHERE LIQUOR MAY BE CONSUMED**



10. John Hendry (Trout Lake) Park – Designated Area



11. Jonathan Rogers Park – Designated Area

**SCHEDULE 2A**

**PARKS AND AREAS OF PARKS  
 WHERE LIQUOR MAY BE CONSUMED**



12. Jones Park – Designated Area



13. Kitsilano Beach Park – Designated Area



**SCHEDULE 2A**

**PARKS AND AREAS OF PARKS  
 WHERE LIQUOR MAY BE CONSUMED**



14. Langara Park – Designated Area



15. Locarno Beach Park – Designated Area

**SCHEDULE 2A**

**PARKS AND AREAS OF PARKS  
 WHERE LIQUOR MAY BE CONSUMED**



16. Maple Grove Park – Designated Area



17. McBride Park – Designated Area



**SCHEDULE 2A**

**PARKS AND AREAS OF PARKS  
WHERE LIQUOR MAY BE CONSUMED**



18. Memorial West Park – Designated Area



19. New Brighton Park – Designated Area

**SCHEDULE 2A**

**PARKS AND AREAS OF PARKS  
 WHERE LIQUOR MAY BE CONSUMED**



20. Pandora Park – Designated Area



21. Queen Elizabeth Park – Designated Area



**SCHEDULE 2A**

**PARKS AND AREAS OF PARKS  
 WHERE LIQUOR MAY BE CONSUMED**



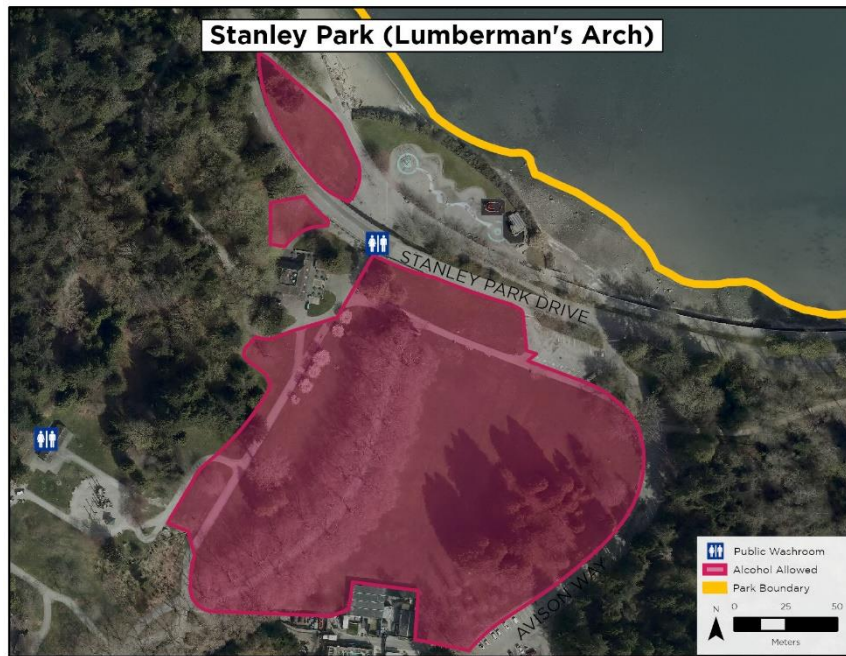
22. Riverfront Park – Designated Area



23. Spanish Banks Beach Park – Designated Area

SCHEDULE 2A

PARKS AND AREAS OF PARKS  
WHERE LIQUOR MAY BE CONSUMED



24. Stanley Park (Lumberman's Arch) – Designated Area

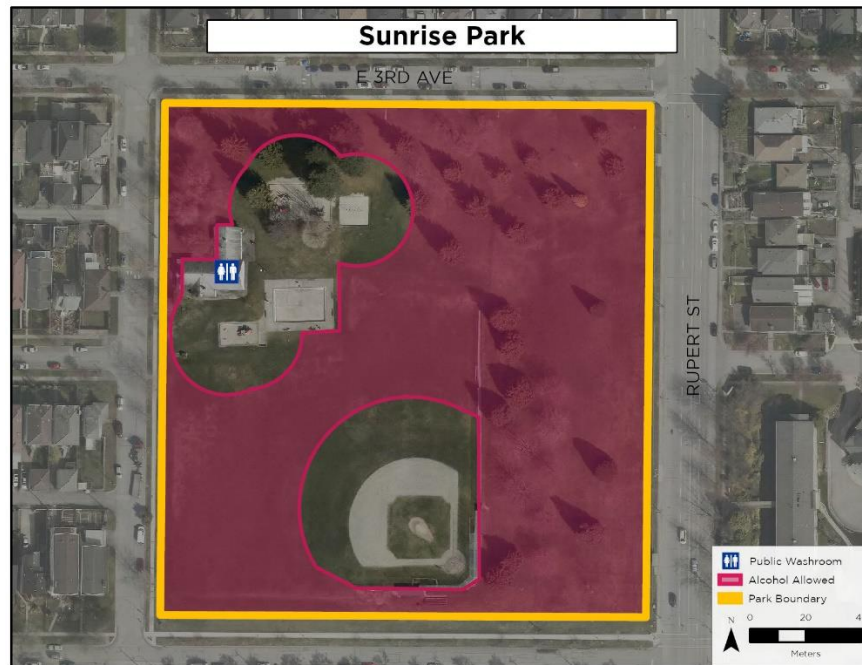


25. Stanley Park (Southwest) – Designated Area



**SCHEDULE 2A**

**PARKS AND AREAS OF PARKS  
 WHERE LIQUOR MAY BE CONSUMED**



26. Sunrise Park – Designated Area



27. Tatlow Park – Designated Area

**SCHEDULE 2A**

**PARKS AND AREAS OF PARKS  
 WHERE LIQUOR MAY BE CONSUMED**



28. Vanier Park – Designated Area



29. Victoria Park – Designated Area



**SCHEDULE 2A**

**PARKS AND AREAS OF PARKS  
 WHERE LIQUOR MAY BE CONSUMED**



30. Volunteer Park – Designated Area



31. Woodland Park – Designated Area

**SCHEDULE 2B**  
**PARKS AND AREAS OF PARKS**  
**WHERE LIQUOR MAY BE CONSUMED**



1. Beaconsfield Park – Designated Area



2. Braemar Park – Designated Area



**SCHEDULE 2B**  
**PARKS AND AREAS OF PARKS  
 WHERE LIQUOR MAY BE CONSUMED**



3. Brewers Park – Designated Area



4. Clinton Park – Designated Area

**SCHEDULE 2B**

**PARKS AND AREAS OF PARKS  
 WHERE LIQUOR MAY BE CONSUMED**



5. Collingwood Park – Designated Area



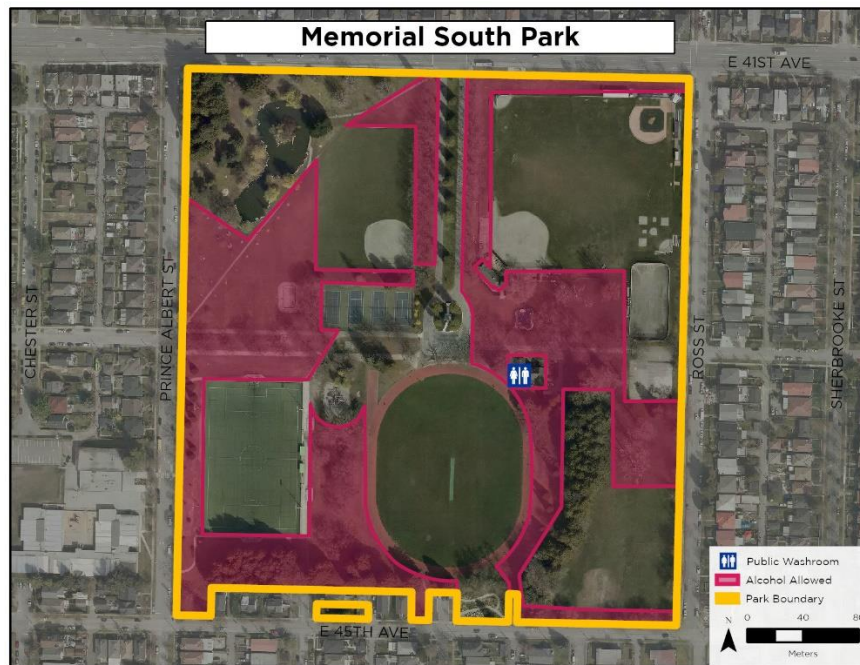
6. Columbia Park – Designated Area



**SCHEDULE 2B**  
**PARKS AND AREAS OF PARKS**  
**WHERE LIQUOR MAY BE CONSUMED**



7. Falaise Park – Designated Area

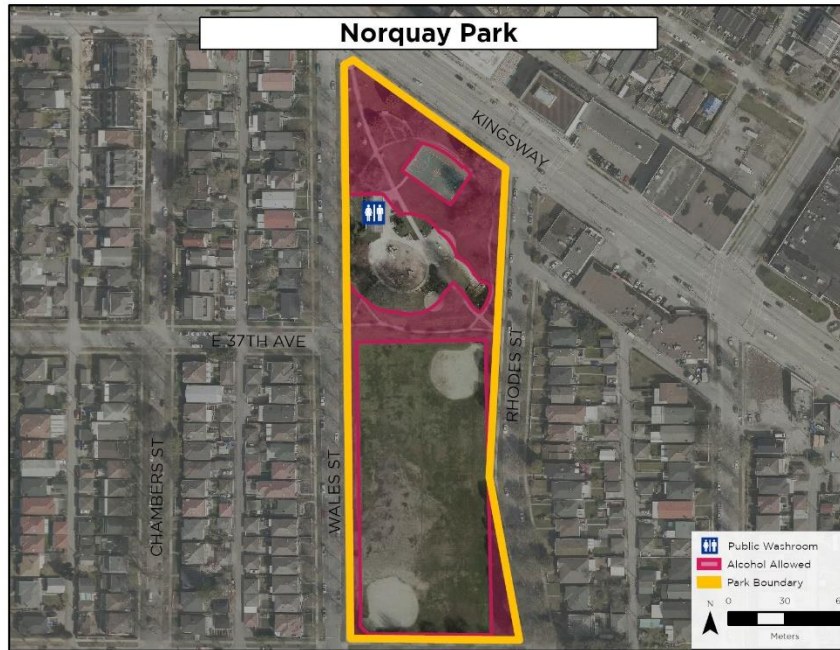


8. Memorial South Park – Designated Area



**SCHEDULE 2B**

**PARKS AND AREAS OF PARKS  
 WHERE LIQUOR MAY BE CONSUMED**



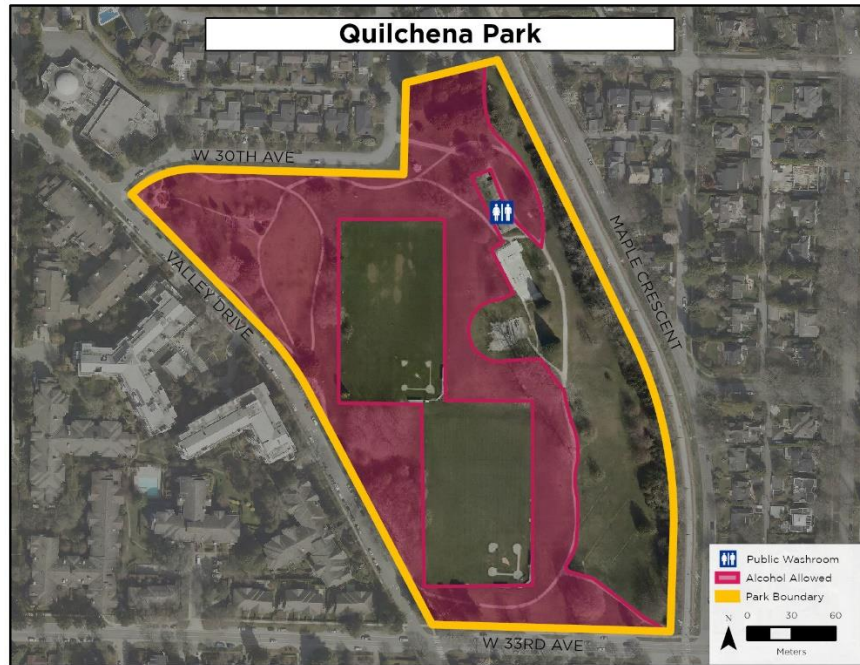
9. Norquay Park – Designated Area



10. Oak Park – Designated Area

**SCHEDULE 2B**

**PARKS AND AREAS OF PARKS  
 WHERE LIQUOR MAY BE CONSUMED**



11. Quilchena Park – Designated Area



12. Robson Park – Designated Area

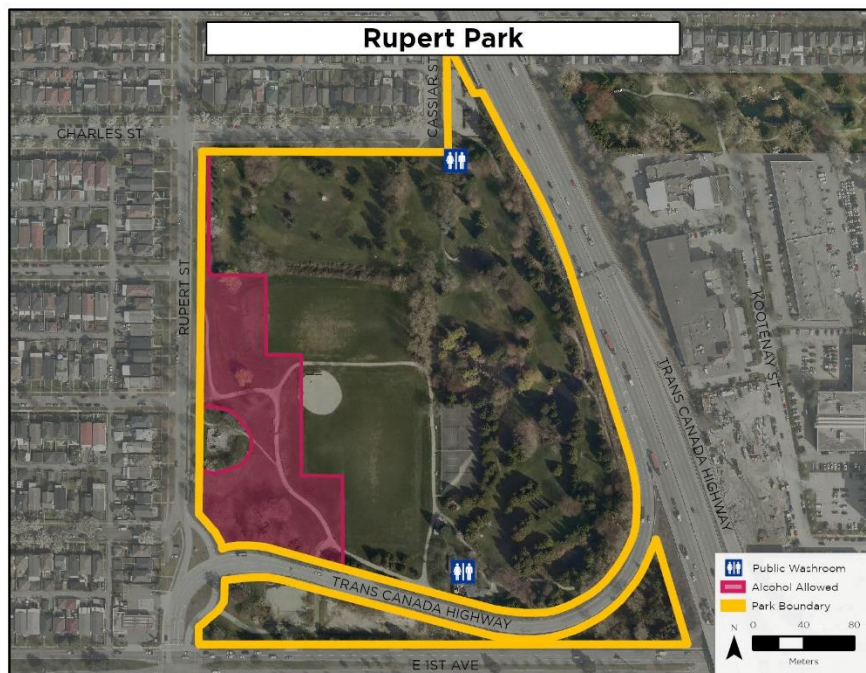


**SCHEDULE 2B**

**PARKS AND AREAS OF PARKS  
 WHERE LIQUOR MAY BE CONSUMED**



13. Ross Park – Designated Area



14. Rupert Park – Designated Area



**SCHEDULE 2B**

**PARKS AND AREAS OF PARKS  
 WHERE LIQUOR MAY BE CONSUMED**



15. Slocan Park – Designated Area



16. Winona Park – Designated Area

**SCHEDULE 2C**

**PARKS AND AREAS OF PARKS  
 WHERE LIQUOR MAY BE CONSUMED**



1. Jericho Beach Park – Designated Area



2. John Hendry (Trout Lake) Park – Designated Area



SCHEDULE 2C

PARKS AND AREAS OF PARKS  
WHERE LIQUOR MAY BE CONSUMED



3. Kitsilano Beach Park – Designated Area



4. Locarno Beach Park – Designated Area



**SCHEDULE 2C**  
**PARKS AND AREAS OF PARKS**  
**WHERE LIQUOR MAY BE CONSUMED**



5. New Brighton Park – Designated Area



6. Spanish Banks Park – Designated Area

## SCHEDULE 2C

### PARKS AND AREAS OF PARKS WHERE LIQUOR MAY BE CONSUMED



7. Stanley Park (Second Beach) – Designated Area