



ENHANCED ACCESSIBILITY ON SEAWALL CYCLING PATH

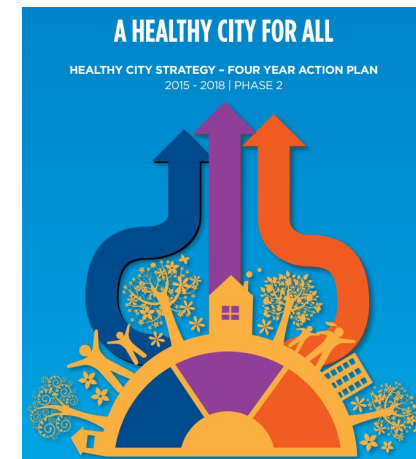
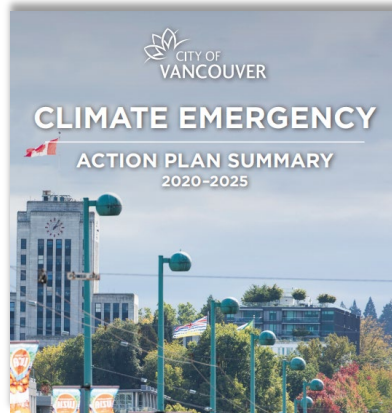
Report Back

Park Board Committee Meeting
Monday, March 10, 2025



- To respond to the [May 6, 2024 Motion](#): Removal of Cyclist Barriers and Implementation of Signage for Seawall Safety; and
- To seek a decision for staff to proceed with the detailed design phase of the proposed solutions for the Stanley Park Seawall pathways at Lumberman's Arch, Prospect Point and Third Beach, and to seek construction funding in the 2027-2030 capital plan.

Relevant Policies



- Much of the 8.8km-long seaside greenway around Stanley Park has separate paths for pedestrians and cyclists
- Tightly spaced maze gates exist in shared zones at Lumberman's Arch, Prospect Point and Third Beach requiring cyclists to dismount and walk their bikes
- These gates pose accessibility and safety challenges and create inequities
- Staff engaged a transportation engineering consultant to recommend alternative options



Existing Accessibility and Safety Challenges

- Maze gates hinder accessibility, add hazards & create inequities
- Impacted users: wheelchair bikes, hand-cyclists, bikes with trailers, cargo bikes, tandem bikes, tricycles, etc.
- Observational data indicate poor compliance → safety implications



Lumberman's Arch - Marked Bike Path with Single Pedestrian Crossing

Existing



Proposed



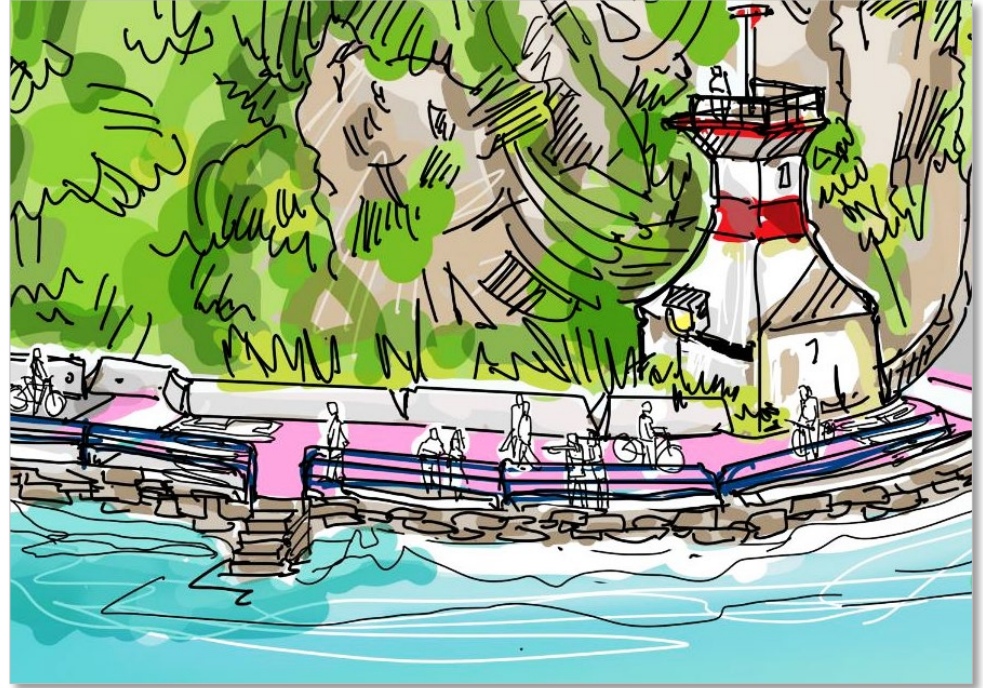
* Rendering for illustration only.

Prospect Point – Low-cost Signage and Fencing Changes

Existing



Proposed



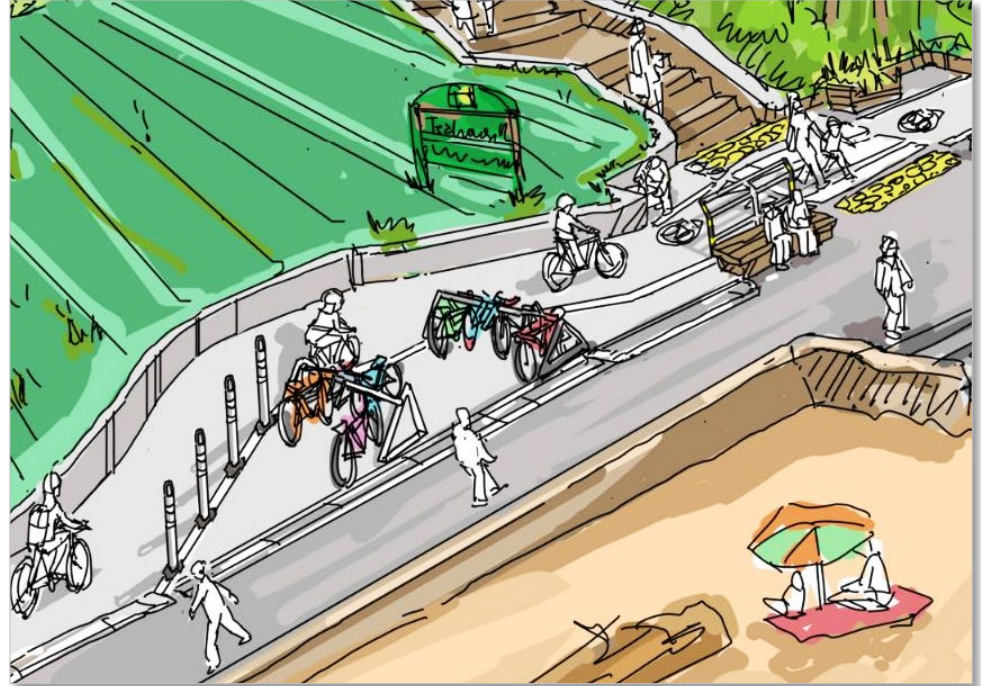
* Rendering for illustration only.

Third Beach - Focused Crossing Area Plus Relocated Bike Parking

Existing



Proposed



* Rendering for illustration only.

- **Archaeology and Cultural Sensitivity:**
 - Archaeological considerations can be addressed at all three locations
- **E-Scooters and E-Bikes:**
 - Geo-fencing & speed control can be implemented for shared micro-mobility services in high pedestrian zones
- **Interest-holder Engagement:**
 - Will seek feedback from cycling advocacy groups: HUB Cycling, Spinal Cord Injury BC, Power To Be, BC Wheelchair Sports Association, etc.

Construction Costs	\$ 588,000
Design Fees	\$ 90,000
Archaeology	\$ 120,000
Project Management	\$ 30,000
Total Projected Costs	\$ 828,000

■ Detailed Design Phase:

- Available eligible funding in the 2023-2026 capital plan
- Q2 – Q4 2025

■ Construction Phase:

- Seek funding in the 2027-2030 capital plan to support construction in 2027

- A. THAT the Board approve the proposed conceptual designs to enhance accessibility on the Stanley Park Seawall pathways at Lumberman's Arch, Prospect Point, and Third Beach as described in this report; and
- B. THAT the Board direct staff to proceed with the detailed design phase for the proposed solutions for the Stanley Park Seawall pathways at Lumberman's Arch, Prospect Point and Third Beach, and to seek construction funding in the 2027-2030 capital plan.

Thank you.

Questions or
Comments?



Seawall cycling path at Science World (ISL Engineering and Land Services)

