



# CHINA CREEK PARK NORTH PROJECTS

STAFF/BOARD BRIEFING  
June 8, 2016



- Introduction/Purpose
- How the Sewer System Works
- Pump Stations in Parks
- China Creek Park Overview
- Pump Station in China Creek Park North
- Stakeholders
- Project Timeline & Engagement

- To inform the Board of 2 proposed projects and timelines:
  - Pump station replacement
  - Park improvements
- To listen to concerns and receive comments

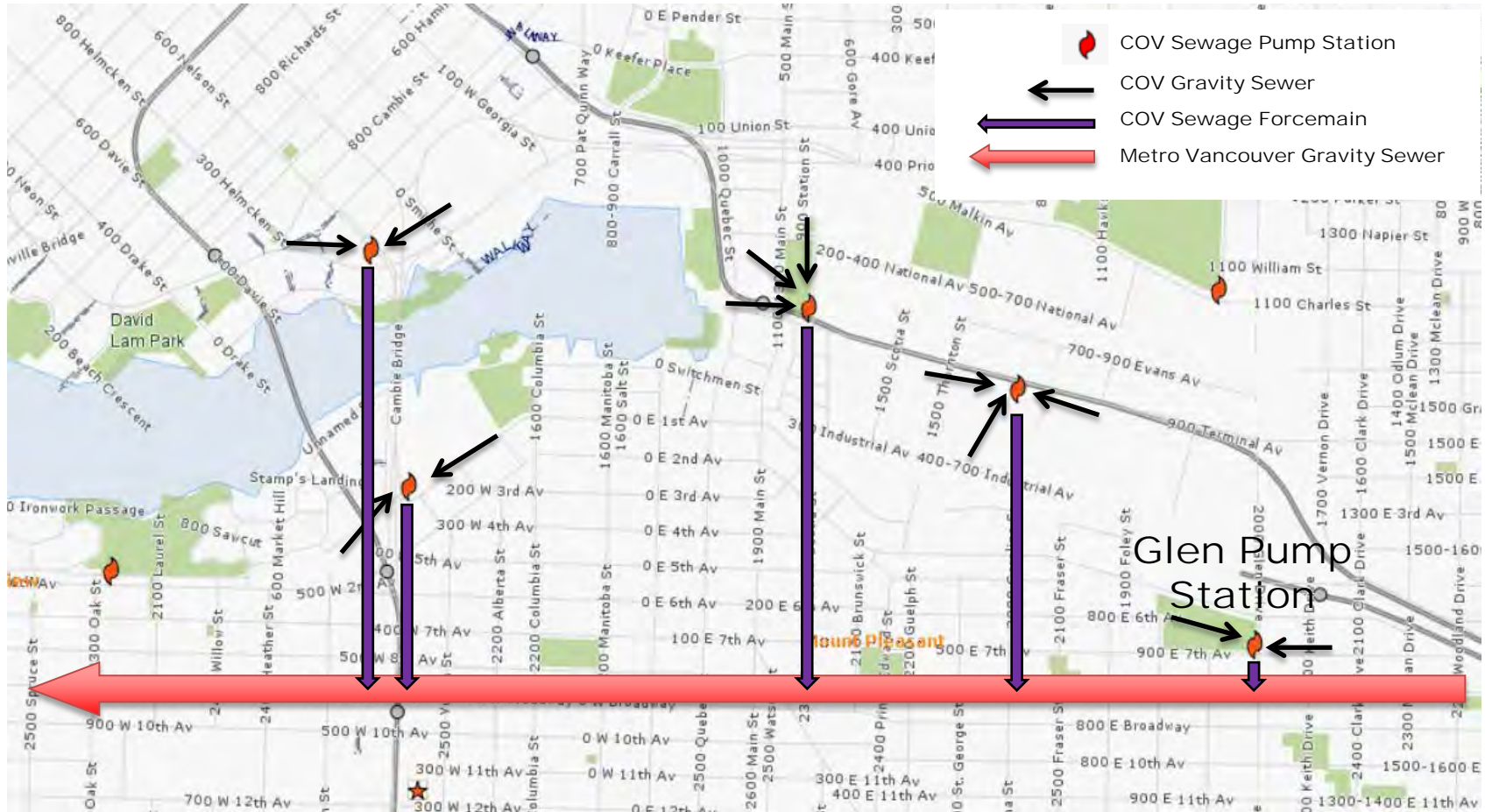


- Pump Station has reached the end of its service life and must be replaced
- Playground requires upgrades to meet CSA standards
- Softball fields are not regulation size and there are conflicts

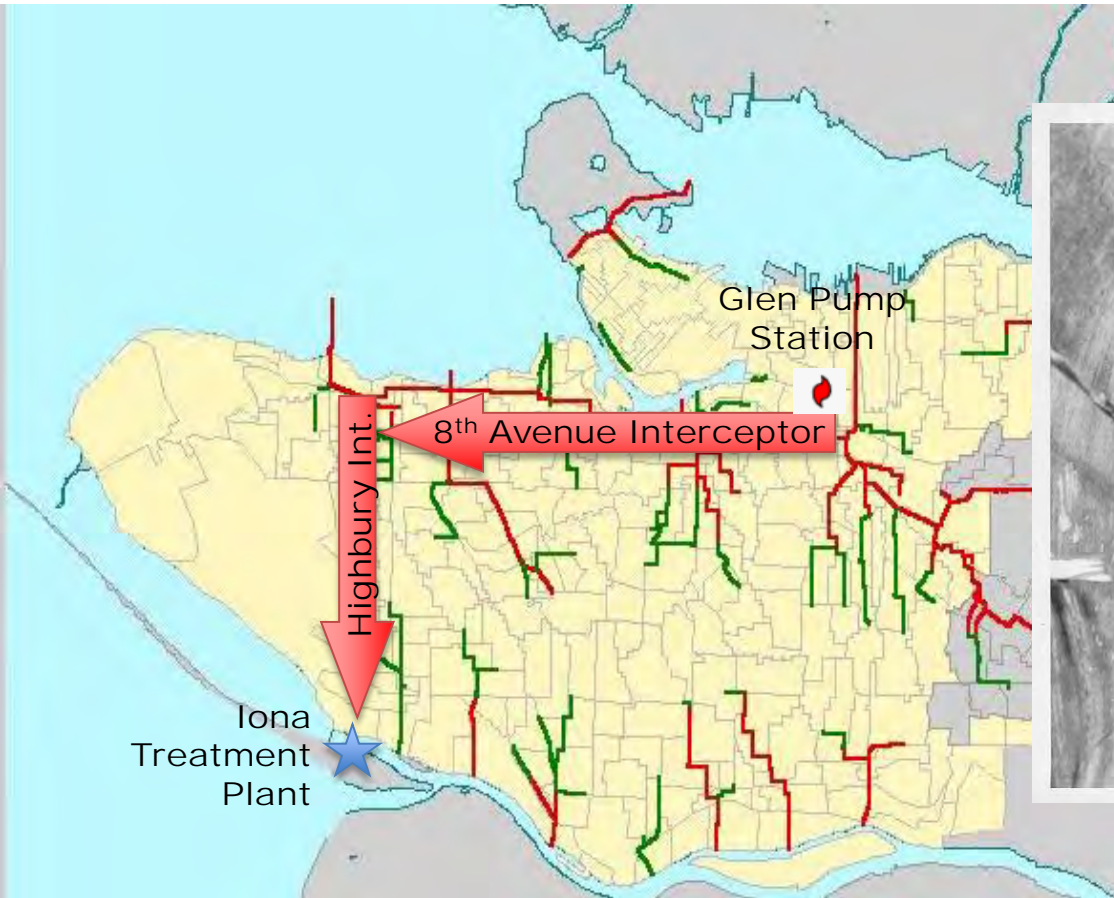
# How the Sewer System Works



# How the Sewer System Works



# How the Sewer System Works



# Why we need Pump Stations

- Direct sewage towards the treatment plants
- Eliminate discharges into the environment
- Protect water quality
- Protect human health
- Support recreational use of water bodies





# Pump Station Examples

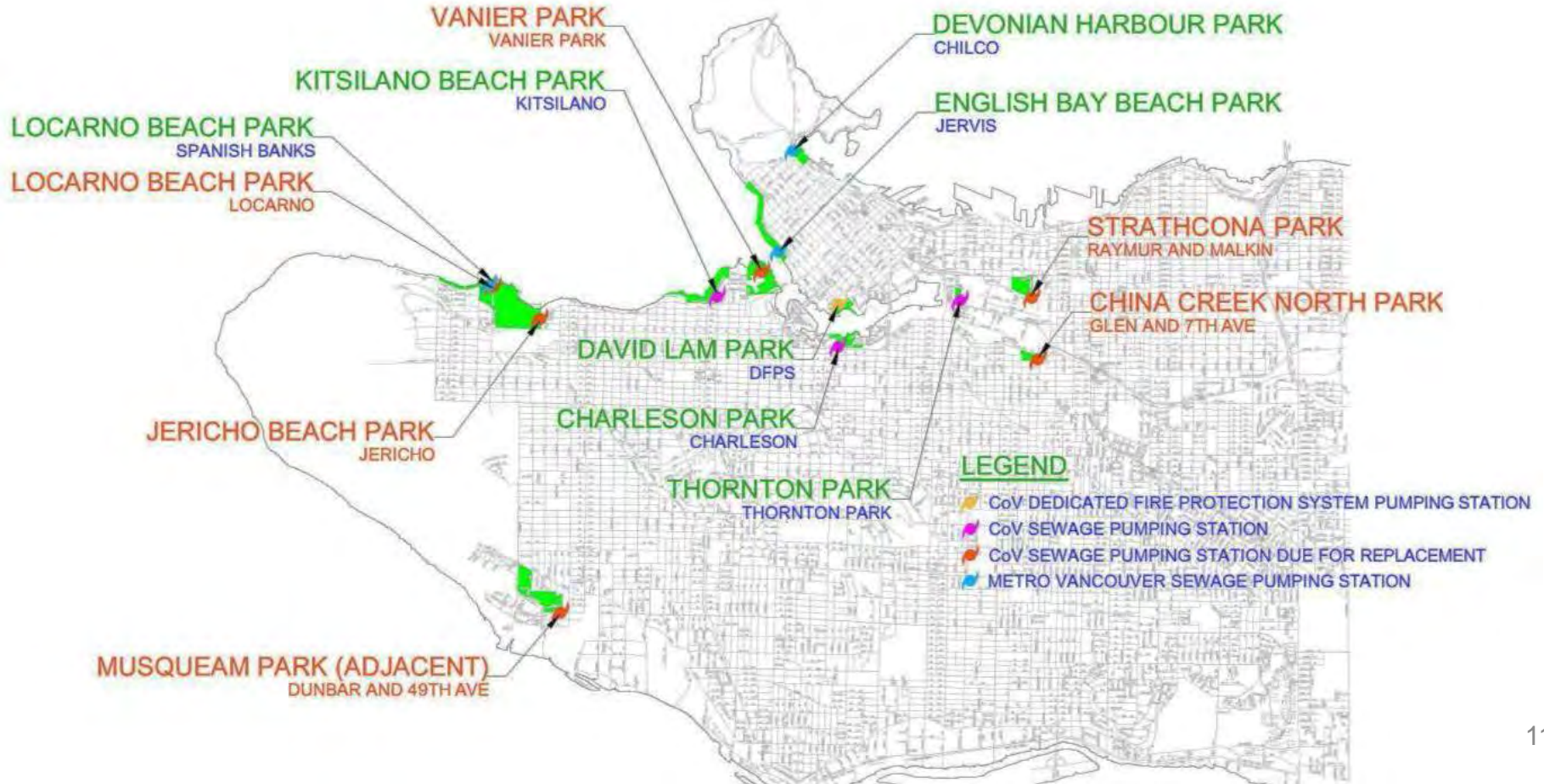




# Pump Stations in Parks



# 13 Pump Stations in Parks – 6 due for Replacement



# Example Sewage Pump Stations in Vancouver Parks

Thornton  
Park



Kitsilano  
Beach Park



Jericho  
Beach Park



Charleson  
Park





# China Creek Park North

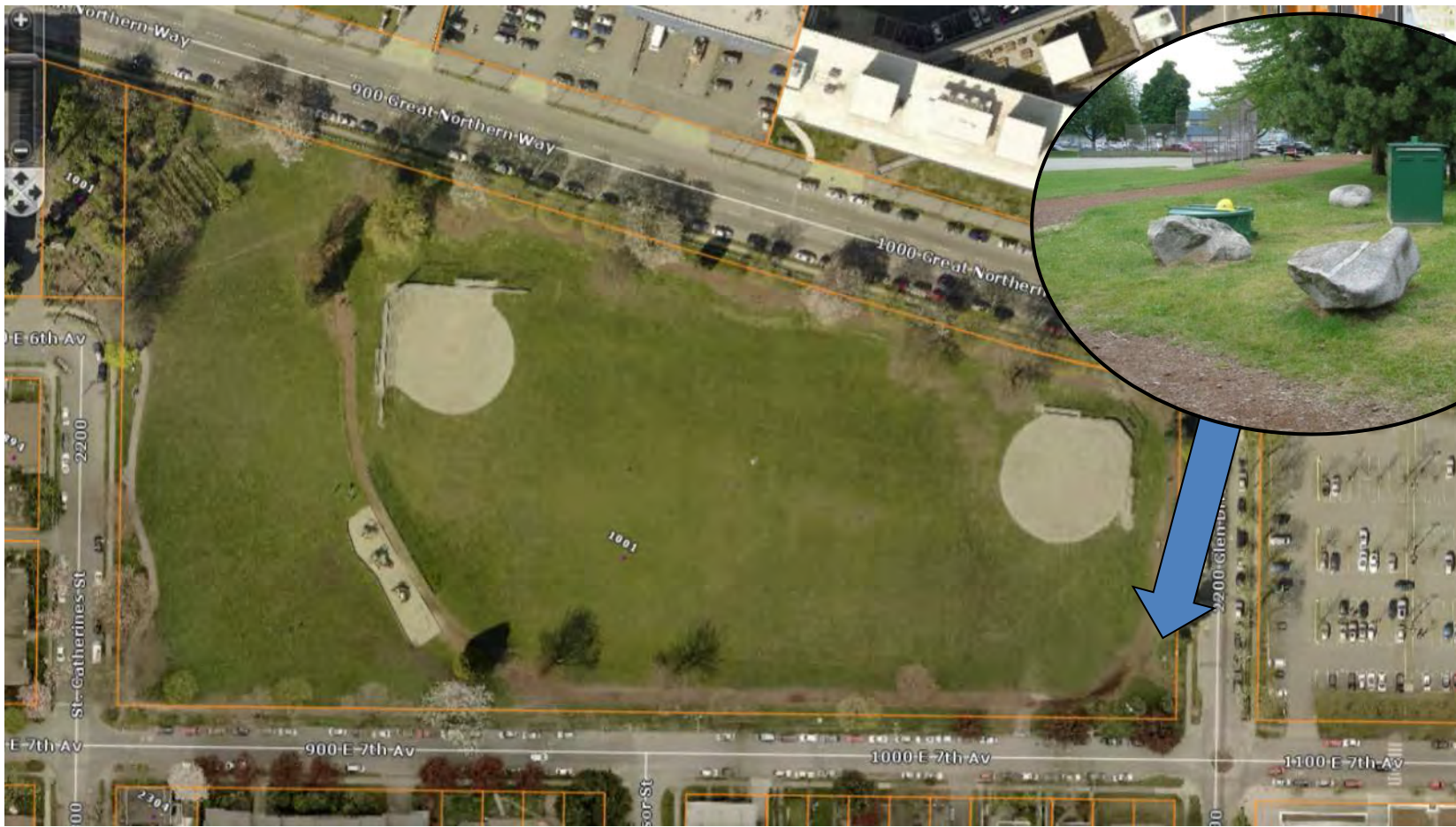


# Existing Conditions



- PLAYGROUND INTERFERES WITH SOFTBALL OUTFIELD
- SHORT OUTFIELD (200') LIMITS FIELD USE
- GENERAL LOCATION OF NEW PUMP STATION

# Glen Pump Station



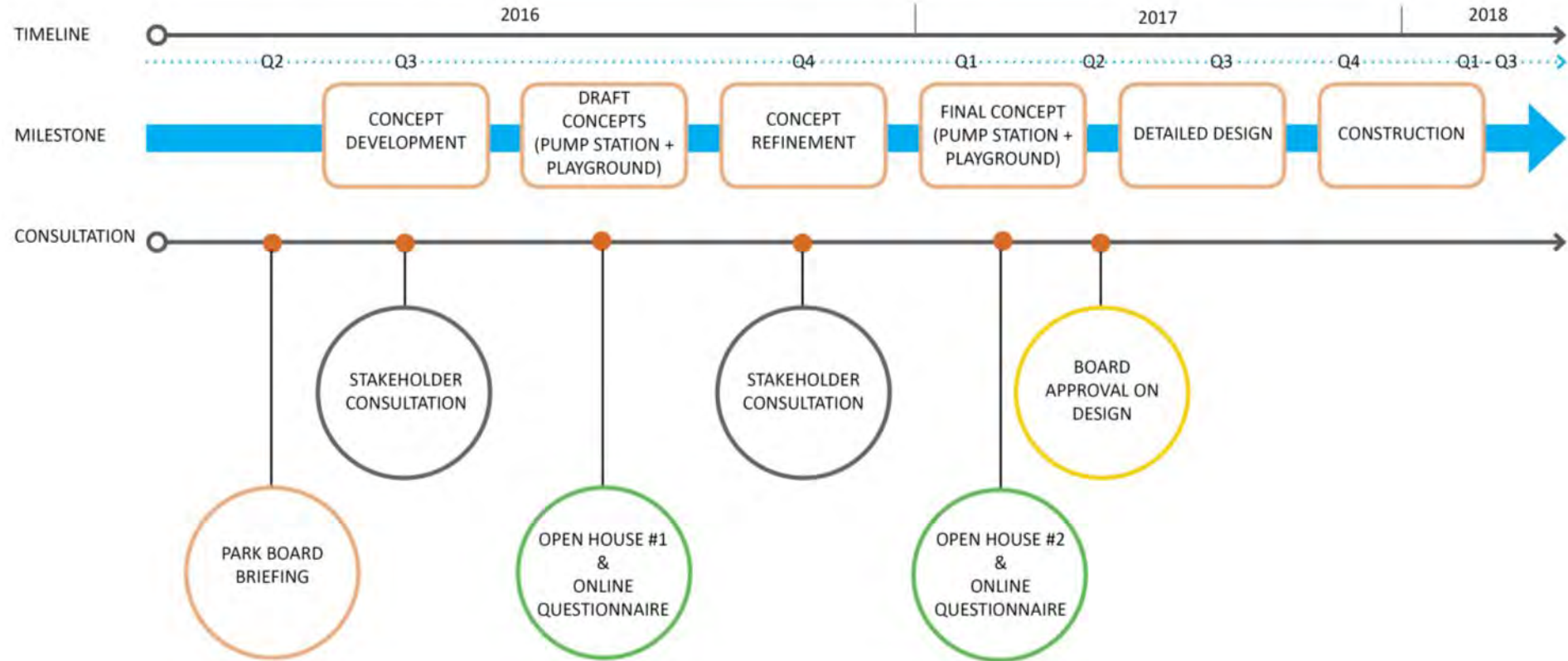


# Old underground stations



- Installed in 1972 (44 yrs old)
- Reached the end of its service life
- Must be updated to meet WorkSafeBC requirements
- At risk of spilling if not replaced
- Spill/overflows would discharge into False Creek
- Limited capacity to accommodate growth
- Location linked to proximity of adjacent utilities

# Project Timeline & Engagement Process



- Field user groups – softball, soccer, ultimate;
- Mount Pleasant Childcare Society;
- Vancouver Community College;
- Means of Production Community Garden;
- others

- Integrate added value to park with pump station project
- Opportunity to engage public/stakeholders about park and engineering projects concurrently
- Address existing conflicts between west ball diamond and playground
  - May require relocation of east diamond (in consultation with field users)
- Provide a stairway on slope at existing worn path

- Engineering will issue an RFP to potential consultants (engineering and architecture)
- Park Board will lead public engagement and issue an RFP for park features
- Engagement begins in the fall of 2016

# Comments?

