

# Public Bike Share Stations in Parks

Staff/Board Briefing  
July 13, 2016  
(via teleconference)



## Purpose:

To provide the Park Board Commissioners an update on the Public Bike Share (PBS) program, including potential locations for PBS stations in parks, which will be brought to the Board for approval at a future meeting.

- Commencing station installations within the initial system area which includes downtown extending to Arbutus St, 16<sup>th</sup> Ave, and Main St.
- Incremental roll-out:
  - 20 stations currently being installed on City streets/sidewalks and public/private lands
  - 50 additional stations coming soon
  - Ultimately 150 stations live by the end of summer
  - Once installed, station adjustments may be made to address operational needs or safety concerns

mobi

BIKES WE SHARE



Helmets stored  
in bike baskets



- Vancouver Bike Share Inc. (VBS) has submitted to the City a number of proposals for station locations in parks
- Engineering staff are continuing to work with Parks staff and First Nations to review station location proposals
- If supported by Parks and First Nations, proposals will be further reviewed by internal stakeholders at the City

Station locations in parks proposed by VBS are reviewed with the following considerations:

- Proximity to locations of interest
- Ability to provide access to high demand destinations
- Ability to encourage or support sustainable transportation
- Located on existing hardscape

# Public Bike Share – Station Siting

1. **Sunset Beach** – East Parking Lot
2. **Sunset Beach** – West Parking Lot
3. **English Bay Bathhouse** – 1700 Beach Ave Plaza
4. **Stanley Park** – Second Beach
5. **Stanley Park** – Third Beach
6. **Stanley Park** – Totem Poles
7. **Stanley Park** – Vancouver Aquarium, East
8. **Stanley Park** – Vancouver Aquarium, South
9. **Stanley Park** – Rose Garden
10. **Devonian Harbour Park** – TBD
11. **Yaletown Park** – TBD
12. **Vanier Park** – TBD
13. **Kitsilano Beach Park** – TBD



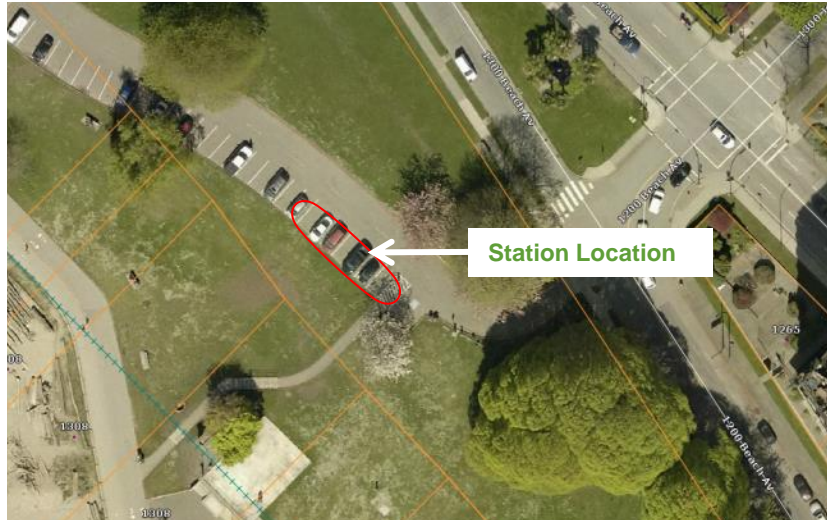


# 1. Sunset Beach – East Parking Lot



- Station would be located in the pay parking lot at sunset beach park, beside the paved hockey rink.
- Proposed station location would replace 5 car parking spaces stalls with 32 bike docks
- Station length: 11.2M, and 3.2m wide (double-sided station)

## 2. Sunset Beach – West Parking Lot



- Station would be located in the pay parking lot near the Jervis pump station.
- Proposed station location would replace 7 car parking spaces with 24 bike docks.
- Station length: 16.8 Meters

# 3. English Bay Bathhouse– 1700 Beach Ave Plaza



- Station would be located on the roof of the English Bay Bathhouse, adjacent to Cactus Club Cafe
- Station length: 21 Meters, and would include 30 bike docks
- Station could be easily removed for special events

# 4. Stanley Park – Second Beach, Stanley Park Drive



- Specific location TBD

## 5. Stanley Park – Third Beach, Parking Lot



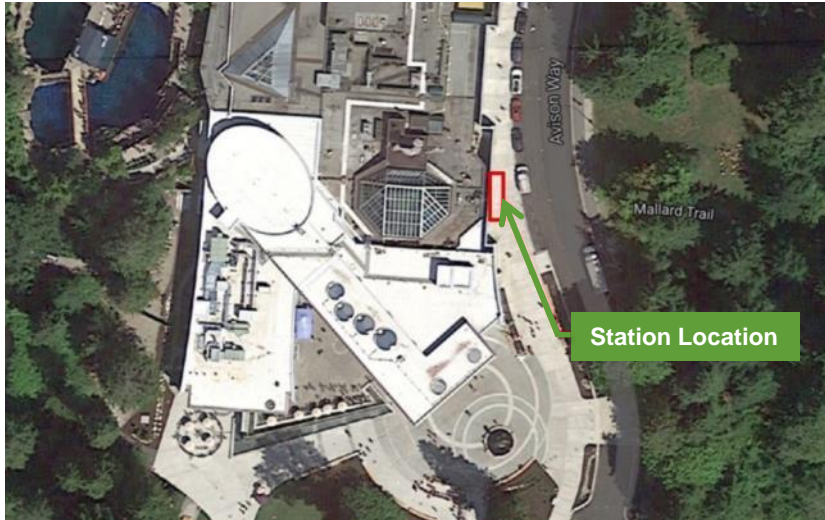
- Station would be located in the Third Beach Parking lot
- Proposed station location would replace 9 car parking spaces with 32 bike docks
- Station length: 22.4 Meters

## 6. Stanley Park - Totem Poles, 1600 Stanley Park Dr



- Station would be located adjacent to the Totem Pole Parking lot on Stanley Park Drive near the Legends of the Moon shop.
- Proposed station location would replace 4 car parking spaces with 32 bike docks
- Station length: 22.4 Meters

# 7. Stanley Park – Vancouver Aquarium, East



- Station would be located on the east side of the Vancouver Aquarium, adjacent to Avison Way
- Station length: 11.2 Meters, and would include 16 bike docks

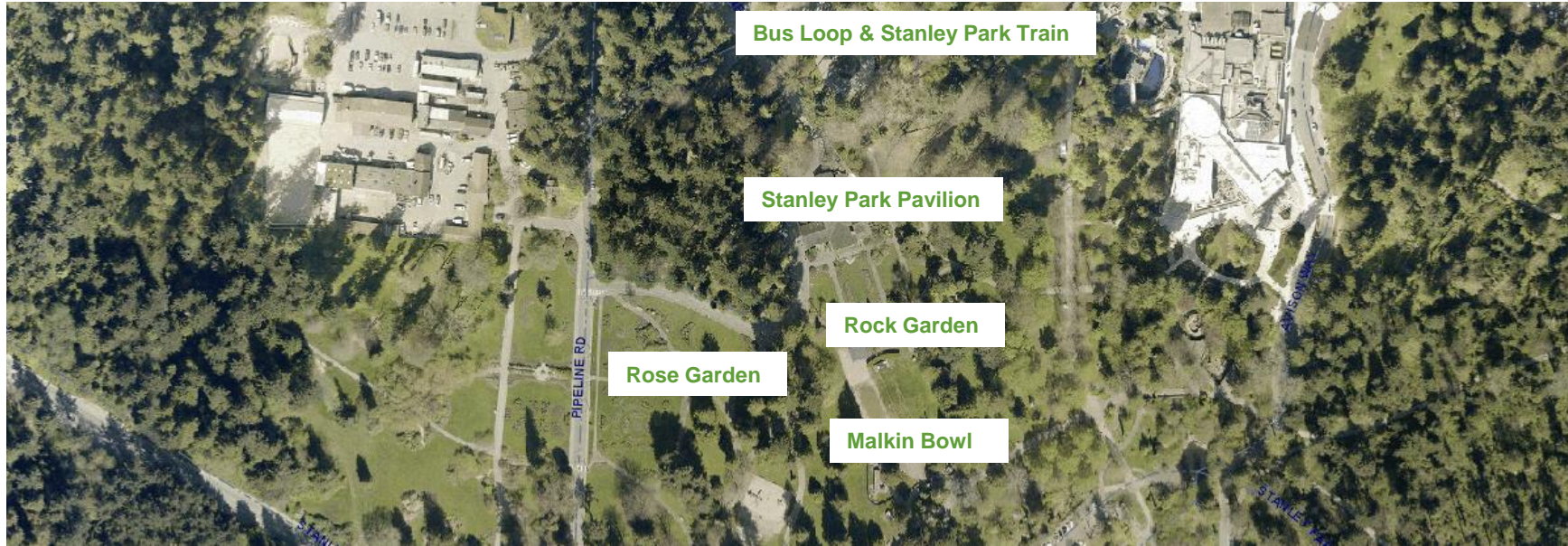
# 8. Stanley Park – Vancouver Aquarium, South West



- Station would be located on the South West side of the Vancouver Aquarium, adjacent to Avison Way
- Station length: 9.8 Meters, and would include 14 bike docks



# 9. Stanley Park – Bus Loop, Train, Rose Garden, Pavilion



- Station would be located near bus loop, Stanley Park Train, Stanley Park Pavilion, Rose Garden, Rock Garden, and Malkin Bowl
- Specific location TBD

# 10. Devonian Harbour Park – TBD



- Exact location not yet proposed

# 11. Yaletown Park – TBD



- Exact location not yet proposed

# 12. Vanier Park – TBD



- Exact location not yet proposed

# 13. Kitsilano Beach Park – TBD



- Exact location not yet proposed

- Continue to work with Vancouver Bike Share, Park Board staff, and First Nations and bring forward location recommendations for Park Board consideration at a future meeting.
- Continue to work with Park Board staff as the bike share system is implemented and VBS/the City learns about demand; any new sites will be reviewed by staff and brought back to the Park Board and First Nations.

