

July 17, 2017

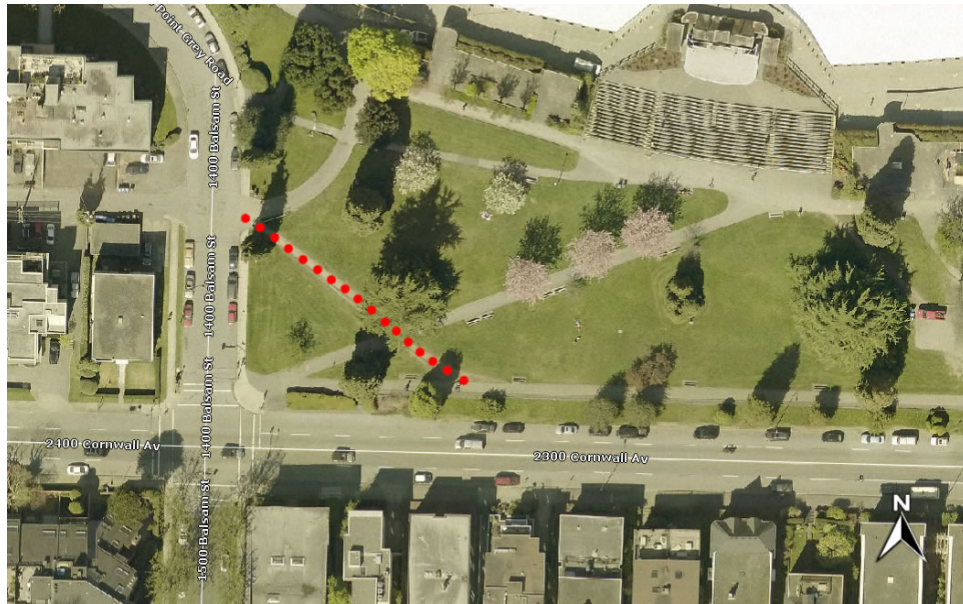
MEMO TO : Park Board Commissioners

FROM : Tiina Mack, Manager of Park Development

SUBJECT : Kitsilano Beach Park (informal bike path at west edge of park)

Dear Commissioners,

This is an update to memos previously sent on this topic in 2016. Park Board staff have continued working to resolve challenges associated with the informal bike path (Fig 1) on the west edge of Kitsilano Beach Park. The path emerged over years of use to serve as a short-cut to connect the east/west shared path within Kitsilano Beach Park to Balsam Street and now the Point Grey bike path. The area of the park bounding the path was fenced in 2015 to prevent conflicts between bikes and pedestrians until a solution was developed.



In seeking a solution, Park Board staff worked collaboratively with City of Vancouver Engineering, the Kits Point Resident’s Association (KPR), and HUB, to generate design solutions and determine shared priorities. The result of these discussions is a desire for a path alignment that respects the safety and accessibility needs of pedestrians and cyclists while minimizing the impact to green-space within the park. Path options mindful of these principles were presented to the public at an on-site public open house on November 16, 2016. These options along with the open house results can be seen on the project web-page: <http://vancouver.ca/parks-recreation-culture/kitsilano-beach-park-bike-path.aspx>

The open house provided valuable insights and community members were disappointed that the western edge of Kitsilano Beach Park was encumbered with snow fence for an extended period of time. There was a keen interest in seeing the issue resolved in the short-term in order that the park can be returned to the community.



In light of the open house input, Park Board staff had further discussions with the KPRA and HUB to discuss the open house results and to share modified concepts for a proposed solution. These concepts reflected input received from the public engagement. Subsequently, Park Board staff recommended that KPRA and HUB work together on a joint solution.

After much deliberation between the two groups, a co-authored letter was received on July 9, 2017. The three main points of agreement are:

- A desire to remove the snow-fence immediately;
- No joint recommendation for a path configuration on the west side of Kits Beach Park, but agreement on the importance of safety and need to limit paving within the park; and
- Recognition of pedestrian and bike traffic challenges in the entire park and a desire to “engage in a collaborative and inclusive process to ameliorate the previous conflicts over proposals to put a bicycle path in both Kits Beach and Hadden Parks”.

Upon receipt of this letter, Park Board removed the snow-fence to honour the request.

Staff will continue to talk and explore solutions with the communities affected by the traffic challenges within Kitsilano Beach Park. Plans are in motion to meet in September with City of Vancouver Engineering, KPRA and HUB to determine next steps to look at both Kitsilano Beach and Hadden Parks holistically to improve mobility of all park users into the future. In the meanwhile, additional surface paint and signs will be installed to highlight the shared nature of the paths and crossing points.

Park Board staff are confident a solution will emerge with time, but there are numerous stakeholders with varying opinions and aspirations for the Seaside Greenway. Developing a long-term strategy for these affected parks will take extensive community consultation and may necessitate hiring a third-party consultant to lead the process.

Sincerely,

A handwritten signature in blue ink, appearing to read "Tiina Mack".

Tiina Mack
Manager of Park Development

/TM

Copy to: PB Senior Management Team
PB Communications
Dale Bracewell, Manager of Transportation Planning